



# 24th IHF Women's Junior (U20) World Championship



Group D, 3. round

Match Team Statistics

Match No. 39

## Japan 43 - 20 Chinese Taipei

(17 - 11) (26 - 9)

22.6.2024. 09:00

Attendance: 61

Sport Centre Boris Trajkovski

Referees: Mohammed J. Alsaqer (KSA) / Ali M. Alsuqufi (KSA)

### Japan

#	Surname and name	S	Goals / shots								Attack				Def.		Penalties				TP				
			Tot.	%	9m	6m	Wing	7m	FB	Brk.	LD	As.	PC	E7	E2	TF	St.	C7	Blk	YC		2m	R	B	
3	HOKAGUCHI Wakana	S	2/5	40			1/2		0/1	1/2			3	1			1	1							18:26
5	KOYAMA Ayumu	S	8/11	73	1/3	1/1	2/2	2/2	1/1	1/2			2	1											19:15
6	MIZUTANI Miu		1/1	100		1/1											1	1					1		8:47
7	HASHIMOTO Mao		9/10	90		1/1	4/4	1/2	1/1	2/2								1							29:39
8	ROKUGAWA Ayumi	S	1/5	20	0/1				1/3		0/1		1		1			2							17:26
10	KONYA Risa		2/3	67	1/1					1/2			6	1			1	2							29:35
11	AZUMA Konoka		1/4	25			0/1	1/2	0/1				2			1	2	1					1		27:05
12	HORIUCHI Yukiha													1											28:13
14	OKUMURA Yusa		7/9	78	2/2	1/1			4/6				3		3		1	2							29:34
15	YAMAGUCHI Toko	S	3/4	75					1/1	2/3							2								9:35
16	SUGIMOTO Mizuki	S											2												18:24
18	SASAKI Ayaka	S	4/4	100			3/3		1/1								2								18:12
19	TERADA Waka																								6:08
22	KAWASAKI Miu		2/2	100					1/1	1/1			1				2		1	1		2			34:15
23	NAKAO Ai	S											1	2	1	1	2		1						18:23
25	KATO Mao		3/3	100		2/2			1/1						1	1		1							22:31
	Team / bench																								
	UKUPNO		43/61	70	4/7	6/6	10/12	4/6	11/17	8/12	0/1		21	6	6	3	16	9	2	1	0	4	0	0	

#	Surname and name	Saves / shots								
		Tot.	%	9m	6m	Wing	7m	FB	Brk.	LD
12	HORIUCHI Yukiha	6/15	40	4/7	1/1				1/7	
16	SUGIMOTO Mizuki	6/17	35	3/7	1/1	1/3	0/2	0/1	1/3	
	TOTAL	12/32	38	7/14	2/2	1/3	0/2	0/1	2/10	0/0

Coach: Satoshi Kawai

Number of attacks: 72, Efficiency: 60%, Average Duration: 19.99 seconds

### Attack by type of defense

	Shots	9m	6m	Wing	TF	E7	E2
On def. 6-0	27/36	4/7	5/5	10/12	16	6	3
Fastbreak	11/17				0	0	0

### Defense by type

	Total	9m	6m	Wing	Stl.	C7	2m
Def. 6-0	17/37	7/20	0/2	2/3	9	2	0
Fastbreak	1/1				0	0	4

### Attack with superiority / minority / goalkeeper out

	Attack				Reaction		
	Att.	Eff.	Shots	TF	FB	LD	Tot.
7 on 6 (GK out)	8	50%	4/6	2	0/0	0/0	0/0
7 on 5 (GK out)	1	100%	1/1	0	0/0	0/0	0/0
6 on 6 (GK out)	2	100%	2/2	0	0/0	0/0	0/0
6 on 5 (GK out)	2	100%	2/2	0	0/0	0/0	0/0
6 on 6	51	59%	30/40	11			
6 on 5	6	50%	3/4	2			
5 on 6	1	0%	0/0	1			
5 on 5	1	100%	1/1	0			

Player superiority / GK out counted at the end of attack (in case it changes during attack)

### Defense with superiority / minority / goalkeeper out

	Attack				Reaction		
	Att.	Eff.	Shots	TF	FB	LD	Tot.
7 on 6 (GK out)	9	22%	2/5	4	1/1	0/0	1/1
6 on 6	50	28%	14/26	24			
5 on 6	4	25%	1/2	2			
6 on 5	4	50%	2/2	2			
5 on 5	3	0%	0/2	1			
4 on 5	1	100%	1/1	0			

Numbers show attacking numbers of opponent. Lower efficiency of opponent means better defense of this team

# Jersey number Tot. Total shooting 6m 6m (line) shooting 9m 9m shooting Wng Wing shooting FB Fastbreak sh. 7m 7m penalty sh.  
 Brk. Breakthrough sh. LD Long distance sh. As. Assists PC Pass clear chance E7 Earned 7m pen. TF Technical faults St. Steals  
 2m 2m punishments C7. Committed 7m E2 Earned 2m pun. YC. Yellow cards R/B Red/Blue cards Blk. Blocks S Starting Line-up



# 24th IHF Women's Junior (U20) World Championship



Group D, 3. round

## Match Team Statistics

Match No. 39

## Japan 43 - 20 Chinese Taipei

(17 - 11) (26 - 9)

22.6.2024. 09:00

Attendance: 61

Sport Centre Boris Trajkovski

Referees: Mohammed J. Alsaqer (KSA) / Ali M. Alsuqufi (KSA)

## Shot distribution by player

### 3 W. Hokaguchi

	0/1	
2/2		

1 post 0/1 lob

### 5 A. Koyama

3/3		
1/1		1/1
3/3		

1 post 2 miss.

### 6 M. Mizutani

		1/1

### 7 M. Hashimoto

		2/2
		1/2
1/1		5/5

### 8 A. Rokugawa

		0/1
		0/1

1 post 1 block 1/1 lob

### 10 R. Konya

0/1		1/1
	1/1	

### 11 K. Azuma

1/1		
0/1	0/1	

1 post

### 14 Y. Okumura

		2/2
0/1		
	2/3	3/3

### 15 T. Yamaguchi

2/2		1/1

1 post

### 18 A. Sasaki

2/2		1/1
		1/1

### 19 W. Terada


### 22 M. Kawasaki

		1/1
1/1		

### 23 A. Nakao


### 25 M. Kato

		2/2
		1/1

## TOTAL

5/5		8/9
2/4	0/1	4/5
9/10	3/5	11/12

5 post 2 miss. 1 block 1/2 lob

## Saves distribution goalkeepers

### 12 Y. Horiuchi

		1/2
2/2		1/4
0/2	2/3	0/2

### 16 M. Sugimoto

2/4		1/2
1/1	1/1	0/1
1/5		0/3

## TOTAL

2/4		2/4
3/3	1/1	1/5
1/7	2/3	0/5

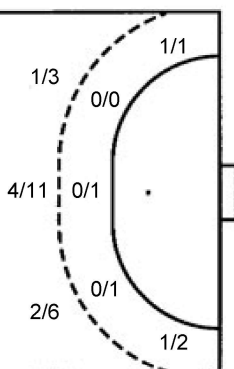
## Shots by position

### ATTACK



7m penalties 4/6  
Fastbreak 11/17  
Breakthrough 8/12  
Long dist. 0/1

### DEFENSE



7m penalties 2/2  
Fastbreak 1/1  
Breakthrough 8/12  
Long dist. 0/0

## Shooting statistics

Position	Goals	Sav.	Miss.	Post	Blk.	Total	%
Back (9m)	4	0	2	1	0	7	57
Line (6m)	6	0	0	0	0	6	100
Wing	10	2	0	0	0	12	83
7m penalties	4	2	0	0	0	6	67
Fastbreak	11	5	0	1	0	17	65
Breakthrough	8	1	0	3	0	12	67
<b>Total</b>	<b>43</b>	<b>10</b>	<b>2</b>	<b>5</b>	<b>0</b>	<b>60</b>	<b>72</b>

# Jersey number Tot. Total shooting 6m 6m (line) shooting 9m 9m shooting Wng Wing shooting FB Fastbreak sh. 7m 7m penalty sh.  
Brk. Breakthrough sh. LD Long distance sh. As. Assists PC Pass clear chance E7 Earned 7m pen. TF Technical faults St. Steals  
2m 2m punishments C7. Committed 7m E2 Earned 2m pun. YC. Yellow cards R/B Red/Blue cards Blk. Blocks S Starting Line-up

Handball statistics and livescore by Toma-soft ltd (www.toma-soft.hr)



# 24th IHF Women's Junior (U20) World Championship



Group D, 3. round

Match Team Statistics

Match No. 39

## Japan 43 - 20 Chinese Taipei

(17 - 11) (26 - 9)

22.6.2024. 09:00

Attendance: 61

Sport Centre Boris Trajkovski

Referees: Mohammed J. Alsaqer (KSA) / Ali M. Alsuqufi (KSA)

### Chinese Taipei

Players		Goals / shots									Attack				Def.			Penalties				TP			
#	Surname and name	S	Tot.	%	9m	6m	Wing	7m	FB	Brk.	LD	As.	PC	E7	E2	TF	St.	C7	Bik	YC	2m	R	B		
1	WU Hsin Yun	S															1								32:37
7	SHIH Chi Chiao En	S	4/6	67	3/5					1/1		1	1	2	2	2									29:39
8	TIEN Yun Ju	S	5/9	56	1/2	0/1				4/6							7					1			41:13
10	CHEN Yen Chun	S	0/2	0	0/1					0/1							2	1							29:10
14	YU Chien Yu	S										1						1							7:29
18	LI Hsin Yi																								16:01
19	YU Chia Ying		1/3	33	1/2	0/1											3								10:04
23	CHANG Fu Ying											1					1								5:27
24	LIEN Yi Ling	S	2/7	29	0/3		1/2		1/1	0/1			1				3								39:19
28	LI Yun Ci																	1							
29	LIN Ching		1/2	50	0/1		1/1											1							25:00
36	CHUAN Heng Yi																2								10:34
66	LEE Ying Chi	S	3/4	75	1/2		1/1		1/1			1					5	1		1					30:13
77	HSU Fang Ying	S													1	3		1							12:03
79	CHANG Ya Ting	S	3/6	50	1/4		1/1		1/1								4		2				2		38:40
88	YANG I Chen		1/1	100					1/1														1		10:12
	Team / bench																								
	UKUPNO		20/40	50	7/20	0/2	2/3	2/2	1/1	8/12	0/0	4	2	2	3	33	2	6	1	0	4	0	0		

Goalkeepers		Saves / shots								
#	Surname and name	Tot.	%	9m	6m	Wing	7m	FB	Brk.	LD
1	WU Hsin Yun	7/36	19	0/2	0/4	2/10	2/4	3/10	0/6	
18	LI Hsin Yi	3/17	18	0/2	0/2	0/2	0/2	2/6	1/3	
	TOTAL	10/53	19	0/4	0/6	2/12	2/6	5/16	1/9	0/0

Coach: **Ling Hui Chia**

Number of attacks: 71, Efficiency: 28%, Average Duration: 30.35 seconds

### Attack by type of defense

	Shots	9m	6m	Wing	TF	E7	E2
On def. 6-0	17/37	7/20	0/2	2/3	33	2	3
Fastbreak	1/1				0	0	0

### Defense by type

	Total	9m	6m	Wing	Stl.	C7	2m
Def. 6-0	27/36	4/7	5/5	10/12	2	6	0
Fastbreak	11/17				0	0	4

### Attack with superiority / minority / goalkeeper out

	Attack				Reaction		
	Att.	Eff.	Shots	TF	FB	LD	Tot.
7 on 6 (GK out)	9	22%	2/5	4	1/1	0/0	1/1
6 on 6	50	28%	14/26	24			
5 on 6	4	25%	1/2	2			
6 on 5	4	50%	2/2	2			
5 on 5	3	0%	0/2	1			
4 on 5	1	100%	1/1	0			

Player superiority / GK out counted at the end of attack (in case it changes during attack)

### Defense with superiority / minority / goalkeeper out

	Attack				Reaction		
	Att.	Eff.	Shots	TF	FB	LD	Tot.
7 on 6 (GK out)	8	50%	4/6	2	0/0	0/0	0/0
7 on 5 (GK out)	1	100%	1/1	0	0/0	0/0	0/0
6 on 6 (GK out)	2	100%	2/2	0	0/0	0/0	0/0
6 on 5 (GK out)	2	100%	2/2	0	0/0	0/0	0/0
6 on 6	51	59%	30/40	11			
6 on 5	6	50%	3/4	2			
5 on 6	1	0%	0/0	1			
5 on 5	1	100%	1/1	0			

Numbers show attacking numbers of opponent. Lower efficiency of opponent means better defense of this team

# Jersey number Tot. Total shooting 6m 6m (line) shooting 9m 9m shooting Wng Wing shooting FB Fastbreak sh. 7m 7m penalty sh.  
 Brk. Breakthrough sh. LD Long distance sh. As. Assists PC Pass clear chance E7 Earned 7m pen. TF Technical faults St. Steals  
 2m 2m punishments C7. Committed 7m E2 Earned 2m pun. YC. Yellow cards R/B Red/Blue cards Blk. Blocks S Starting Line-up

Handball statistics and livescore by Toma-soft ltd (www.toma-soft.hr)



# 24th IHF Women's Junior (U20) World Championship



Group D, 3. round

## Match Team Statistics

Match No. 39

## Japan 43 - 20 Chinese Taipei

(17 - 11) (26 - 9)

22.6.2024. 09:00

Attendance: 61

Sport Centre Boris Trajkovski

Referees: Mohammed J. Alsaqer (KSA) / Ali M. Alsqufi (KSA)

## Shot distribution by player

<b>7 C. Shih</b>	<b>8 Y. Tien</b>	<b>10 Y. Chen</b>	<b>14 C. Yu</b>	<b>19 C. Yu</b>	<b>23 F. Chang</b>	<b>24 Y. Lien</b>
1/1 1/1 1/1 0/1 1/1 1 miss.	1/2 0/1 2/2 2/3 1 miss.	0/2		1/2 1 post		1/2 0/1 1/1 0/1 1 post 1 miss.
<b>28 Y. Li</b>	<b>29 C. Lin</b>	<b>36 H. Chuan</b>	<b>66 Y. Lee</b>	<b>77 F. Hsu</b>	<b>79 Y. Chang</b>	<b>88 I. Yang</b>
	0/1 1/1		2/2 1/1 1 miss.		1/2 2/2 1 miss. 1 block	1/1

## TOTAL

2/4	2/4
0/3	0/1 4/5
6/7	1/3 5/5

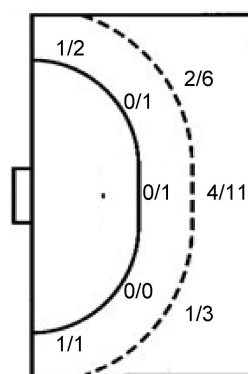
2 post 5 miss. 1 block

## Saves distribution goalkeepers

<b>1 H. Wu</b>	<b>18 H. Li</b>	<b>TOTAL</b>
0/4 0/1 1/1 1/3 1/9 1/4 1/8	0/1 0/5 2/3 0/2 0/1 1/1 0/4	0/5 1/9 2/4 1/1 1/5 1/10 2/5 1/12

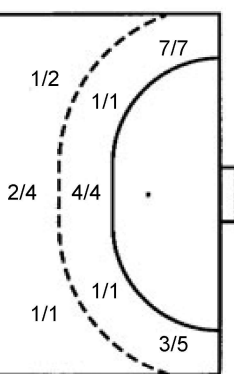
## Shots by position

### ATTACK



7m penalties	2/2
Fastbreak	1/1
Breakthrough	8/12
Long dist.	0/0

### DEFENSE



7m penalties	4/6
Fastbreak	11/17
Breakthrough	8/12
Long dist.	0/1

## Shooting statistics

Position	Goals	Sav.	Miss.	Post	Blk.	Total	%
Back (9m)	7	7	4	1	1	20	35
Line (6m)	0	2	0	0	0	2	0
Wing	2	1	0	0	0	3	67
7m penalties	2	0	0	0	0	2	100
Fastbreak	1	0	0	0	0	1	100
Breakthrough	8	2	1	1	0	12	67
<b>Total</b>	<b>20</b>	<b>12</b>	<b>5</b>	<b>2</b>	<b>1</b>	<b>40</b>	<b>50</b>

# Jersey number Tot. Total shooting 6m 6m (line) shooting 9m 9m shooting Wng Wing shooting FB Fastbreak sh. 7m 7m penalty sh.  
 Brk. Breakthrough sh. LD Long distance sh. As. Assists PC Pass clear chance E7 Earned 7m pen. TF Technical faults St. Steals  
 2m 2m punishments C7. Committed 7m E2 Earned 2m pun. YC. Yellow cards R/B Red/Blue cards Blk. Blocks S Starting Line-up

