





# 24th IHF Women's Junior (U20) World Championship



Group H, 2. round

## Match Team Statistics

Match No. 31

## USA 8 - 24 Angola

(2 - 12) (6 - 12)

21.6.2024. 11:15

Attendance: 66

Sport Centre Boris Trajkovski

Referees: Zan Puksic (SLO) / Miha Satler (SLO)

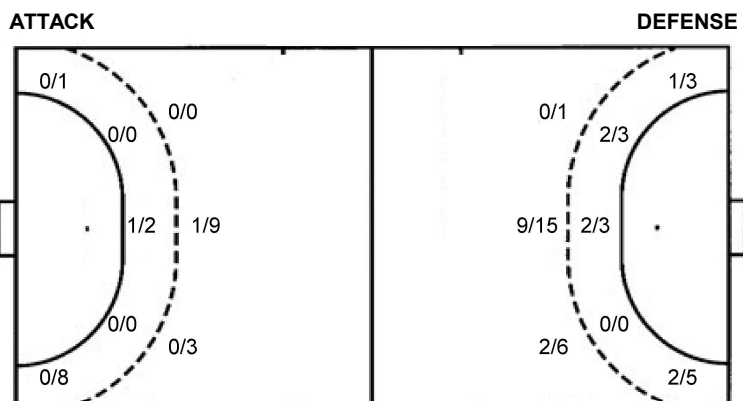
## Shot distribution by player

<b>2 M. Martinez</b>	<b>5 D. Licea</b>	<b>6 I. Hannevik</b>	<b>7 L. Dobreff</b>	<b>8 E. Jeong</b>	<b>10 I. Da Cruz</b>	<b>12 A. Sumalla</b>
1/1 0/1	1 block	0/1 1 miss.	1/1 1/1		0/1 1/1 0/2	0/1
<b>13 V. Kreis</b>	<b>15 E. Ready</b>	<b>17 M. Ready</b>	<b>21 H. Faulkner</b>	<b>23 E. Nesper</b>	<b>TOTAL</b>	
0/1 0/3 3 miss.	0/1 3 miss.	2/2		1/1 1/1 1 miss.	1/2 0/3 4/4 1/3 1/4 0/2 1/1 1 post 9 miss. 3 block	

## Saves distribution goalkeepers

<b>1 J. Malysz</b>	<b>16 L. Gronwald</b>	<b>19 S. Menchaca</b>	<b>TOTAL</b>
0/2 1/2	1/1 0/1 4/5 1/1 1/1 2/10 0/1 0/7		0/2 1/1 0/1 4/5 1/1 1/1 3/12 0/1 0/9

## Shots by position



7m penalties	2/4	7m penalties	1/1
Fastbreak	0/0	Fastbreak	2/3
Breakthrough	3/4	Breakthrough	3/7
Long dist.	1/1	Long dist.	0/1

## Shooting statistics

Position	Goals	Sav.	Miss.	Post	Blk.	Total	%
Back (9m)	1	3	5	0	3	12	8
Line (6m)	1	1	0	0	0	2	50
Wing	0	6	3	0	0	9	0
7m penalties	2	1	0	1	0	4	50
Fastbreak	0	0	0	0	0	0	0
Breakthrough	3	0	1	0	0	4	75
<b>Total</b>	<b>7</b>	<b>11</b>	<b>9</b>	<b>1</b>	<b>3</b>	<b>31</b>	<b>23</b>

# Jersey number Tot. Total shooting 6m 6m (line) shooting 9m 9m shooting Wng Wing shooting FB Fastbreak sh. 7m 7m penalty sh.  
 Brk. Breakthrough sh. LD Long distance sh. As. Assists PC Pass clear chance E7 Earned 7m pen. TF Technical faults St. Steals  
 2m 2m punishments C7. Committed 7m E2 Earned 2m pun. YC. Yellow cards R/B Red/Blue cards Blk. Blocks S Starting Line-up



# 24th IHF Women's Junior (U20) World Championship



Group H, 2. round

Match Team Statistics

Match No. 31

## USA 8 - 24 Angola

(2 - 12) (6 - 12)

21.6.2024. 11:15

Attendance: 66

Sport Centre Boris Trajkovski

Referees: Zan Puksic (SLO) / Miha Satler (SLO)

### Angola

#	Surname and name	S	Goals / shots								Attack				Def.			Penalties			TP			
			Tot.	%	9m	6m	Wing	7m	FB	Brk.	LD	As.	PC	E7	E2	TF	St.	C7	Blk	YC		2m	R	B
1	MULAMBA Carla Nkonko Jaime	S														1								54:29
3	GERALDO Ivandra Josefa Manico		1/3	33	0/1		0/1									1								21:55
4	TATI Marcela Gonçalves	S	1/2	50		1/1	0/1										1							31:56
6	LUANGO Elisandra Vunge		0/2	0																		2		42:22
7	BELO Bernardeth Carla	S	11/16	69	9/12	1/2		1/1		0/1					2	1						1		43:48
8	MATOS Rosa Maria Muhongo																					1		3:22
9	PEDRO Elisandra Guilhermina Paulino	S	3/4	75	1/1	1/2			1/1								2		2			1		36:58
10	CAPESSA Marisoni Julieta Bernardo		0/1	0	0/1																			1:59
13	NUNDA Balbina Cassova Afonsa	S	3/5	60				1/2	2/3		2	1		1	1		1					1		27:45
15	FERNANDO Sandy Da Conceicao C. Gomes		1/1	100		1/1									1	1		1						38:36
16	DALA Juliana Queta														1									
19	XAVIER Maude Kumbembe Bartolomeu		1/3	33		1/2				0/1							3							23:22
20	SIMÕES Isabel Batalha De Almeida																							1:29
31	PEDRO Lurdes Manuel	S	2/5	40	1/3		1/2				1	2		1	4									46:24
35	CARVALHO Anissia Maria Antonio De		1/2	50		1/2																1		12:49
77	TUMBA Jorcela Mutoca Varanda	S	0/4	0	0/4						1	2			2	4	2					1		29:56
	Team / bench																							
	UKUPNO		24/48	50	11/22	4/6	3/8	1/1	2/3	3/7	0/1	9	8	1	3	14	10	4	3	0	8	0	0	

#	Surname and name	Saves / shots								
		Tot.	%	9m	6m	Wing	7m	FB	Brk.	LD
1	MULAMBA Carla Nkonko Jaime	11/17	65	3/3	1/2	6/6	1/3		0/3	
16	DALA Juliana Queta									
	TOTAL	11/17	65	3/3	1/2	6/6	1/3	1/0	0/3	0/0

Coach: Jose Terça Chuma

Number of attacks: 59, Efficiency: 41%, Average Duration: 29.42 seconds

### Attack by type of defense

	Shots	9m	6m	Wing	TF	E7	E2
On def. 6-0	21/43	11/22	4/6	3/8	14	1	3
Fastbreak	2/3				0	0	0

### Defense by type

	Total	9m	6m	Wing	Stl.	C7	2m
Def. 6-0	5/27	1/12	1/2	0/9	10	4	0
Fastbreak	0/0				0	0	8

### Attack with superiority / minority / goalkeeper out

	Attack				Reaction		
	Att.	Eff.	Shots	TF	FB	LD	Tot.
7 on 6 (GK out)	7	57%	4/6	1	0/0	0/0	0/0
6 on 6 (GK out)	9	33%	3/9	0	0/0	1/1	1/1
5 on 6 (GK out)	1	0%	0/0	1	0/0	0/0	0/0
6 on 6	35	40%	14/24	11			
5 on 6	3	0%	0/2	1			
7 on 5 (GK out)	1	100%	1/1	0	0/0	0/0	0/0
6 on 5	3	67%	2/3	0			

Player superiority / GK out counted at the end of attack (in case it changes during attack)

### Defense with superiority / minority / goalkeeper out

	Attack				Reaction		
	Att.	Eff.	Shots	TF	FB	LD	Tot.
7 on 6 (GK out)	5	0%	0/3	2	0/0	0/1	0/1
7 on 5 (GK out)	1	0%	0/0	1	0/0	0/0	0/0
6 on 6 (GK out)	4	0%	0/0	4	0/0	0/0	0/0
6 on 6	32	13%	4/15	17			
6 on 5	14	21%	3/9	5			
6 on 4	3	33%	1/2	1			

Numbers show attacking numbers of opponent. Lower efficiency of opponent means better defense of this team

# Jersey number Tot. Total shooting 6m 6m (line) shooting 9m 9m shooting Wng Wing shooting FB Fastbreak sh. 7m 7m penalty sh.  
 Brk. Breakthrough sh. LD Long distance sh. As. Assists PC Pass clear chance E7 Earned 7m pen. TF Technical faults St. Steals  
 2m 2m punishments C7. Committed 7m E2 Earned 2m pun. YC. Yellow cards R/B Red/Blue cards Blk. Blocks S Starting Line-up



# 24th IHF Women's Junior (U20) World Championship



Group H, 2. round

## Match Team Statistics

Match No. 31

## USA 8 - 24 Angola

(2 - 12) (6 - 12)

21.6.2024. 11:15

Attendance: 66

Sport Centre Boris Trajkovski

Referees: Zan Puksic (SLO) / Miha Satler (SLO)

## Shot distribution by player

3 I. Geraldo

0/2		1/1

4 M. Tati

		1/1

1 post

6 E. Luango


2 miss.

7 B. Belo

1/1		1/1
1/1		
4/4		4/4

3 post 1 miss. 1 block

8 R. Matos


9 E. Pedro

	0/1	
	1/1	1/1

1/1 lob

10 M. Capessa

0/1		

13 B. Nunda

0/2		
2/2		1/1

15 S. Fernando

1/1		

19 M. Xavier

		1/1

2 miss.

20 I. Simoes


31 L. Pedro

		0/1
2/3		

1 miss.

35 A. Carvalho

	0/1	
1/1		

77 J. Tumba

0/1		

3 miss.

## TOTAL

2/2	0/1	1/1
1/5	0/1	0/1
9/12	1/1	9/9

4 post 9 miss. 1 block 1/1 lob

## Saves distribution goalkeepers

1 C. Mulamba

1/2		
3/3	2/2	2/2
0/4	3/3	0/1

16 J. Dala

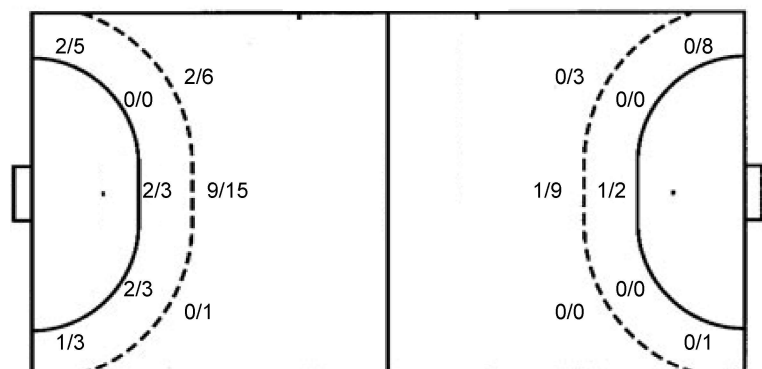

TOTAL

1/2		
3/3	2/2	2/2
0/4	3/3	0/1

## Shots by position

ATTACK

DEFENSE



7m penalties 1/1  
Fastbreak 2/3  
Breakthrough 3/7  
Long dist. 0/1

7m penalties 2/4  
Fastbreak 0/0  
Breakthrough 3/4  
Long dist. 1/1

## Shooting statistics

Position	Goals	Sav.	Miss.	Post	Blk.	Total	%
Back (9m)	11	5	4	1	1	22	50
Line (6m)	4	1	0	1	0	6	67
Wing	3	2	2	1	0	8	38
7m penalties	1	0	0	0	0	1	100
Fastbreak	2	1	0	0	0	3	67
Breakthrough	3	1	2	1	0	7	43
<b>Total</b>	<b>24</b>	<b>10</b>	<b>8</b>	<b>4</b>	<b>1</b>	<b>47</b>	<b>51</b>

# Jersey number Tot. Total shooting 6m 6m (line) shooting 9m 9m shooting Wng Wing shooting FB Fastbreak sh. 7m 7m penalty sh.  
Brk. Breakthrough sh. LD Long distance sh. As. Assists PC Pass clear chance E7 Earned 7m pen. TF Technical faults St. Steals  
2m 2m punishments C7. Committed 7m E2 Earned 2m pun. YC. Yellow cards R/B Red/Blue cards Blk. Blocks S Starting Line-up

Handball statistics and livescore by Toma-soft ltd (www.toma-soft.hr)

