



24th IHF Women's Junior (U20) World Championship



Group E, 2. round

Match Team Statistics
Match No. 26

Czech Republic 26 - 27 China
(13 - 16) (13 - 11)

21.6.2024. 15:45
Attendance: 71
Sport Centre Boris Trajkovski

Referees: Jacob Pagh (DEN) / Karl Thygesen (DEN)

Czech Republic

#	Surname and name	S	Goals / shots								Attack				Def.			Penalties				TP					
			Tot.	%	9m	6m	Wing	7m	FB	Brk.	LD	As.	PC	E7	E2	TF	St.	C7	Blk	YC	2m		R	B			
4	KUBALKOVÁ Anna		2/2	100	1/1										1	1		1	1								8:53
5	GABRHELOVÁ Veronika		0/3	0	0/3										1				3						1		18:06
8	SIMKOVÁ Daniela	S	2/2	100	1/1	1/1									1				8	1	1						45:14
9	SCHREIBMEIEROVÁ Simona	S	4/7	57	2/4				2/2						1		2	3	2	2		2					40:30
10	SKÁCELOVÁ Marcela	S	2/4	50				2/4											1								17:33
11	BRABCOVÁ Adéla																										
13	PEJŠOVÁ Karolína		1/1	100																							13:25
15	JESTŘIBKOVÁ Anna	S	1/2	50		1/2																					44:32
16	STOJAROVÁ Kristýna																										
18	PANOŠKOVÁ Tereza																										19:32
19	VÁVROVÁ Veronika	S	4/5	80	1/2				1/1						4	2	1				2	1	1				46:15
20	KAPUSNIAKOVÁ Šárka	S	4/6	67				4/5		0/1																	40:53
22	KRAUTEROVÁ Tereza																										2:18
24	BEHENSKÁ Sofie		0/1	0		0/1															1				1		43:04
25	ŘADOVÁ Eliška		6/7	86	5/6					1/1					2				2						1		21:27
27	WIZUROVÁ Patricie	S													1				1								58:18
	Team / bench																								1		
	UKUPNO		26/40	65	10/17	2/3	6/10	3/3	0/1	5/6	0/0				8	6	3	4	18	3	4	3	2	3	0	0	

#	Surname and name	Saves / shots								
		Tot.	%	9m	6m	Wing	7m	FB	Brk.	LD
16	STOJAROVÁ Kristýna	0/1	0				0/1			
27	WIZUROVÁ Patricie	9/35	26	7/12	1/4	0/5	0/2	0/3	1/9	
	TOTAL	9/36	25	7/12	1/4	0/5	0/3	0/3	1/9	0/0

Coach: Dušan Poloz

Number of attacks: 56, Efficiency: 46%, Average Duration: 29.23 seconds

Attack by type of defense

	Shots	9m	6m	Wing	TF	E7	E2
On def. 6-0	20/31	9/15	1/2	5/8	13	1	3
On def. 5-1	2/3	1/1	1/1	0/1	5	2	1
Fastbreak	0/1				0	0	0

Defense by type

	Total	9m	6m	Wing	Stl.	C7	2m
Def. 6-0	17/30	3/12	2/2	5/7	2	3	0
Def. 5-1	1/4	0/2	0/1	0/0	1	1	0
Def. 4-2	0/1	0/1	0/0	0/0	0	0	0
Fastbreak	3/3				0	0	3

Attack with superiority / minority / goalkeeper out

	Attack				Reaction		
	Att.	Eff.	Shots	TF	FB	LD	Tot.
7 on 6 (GK out)	2	50%	1/2	0	0/0	0/0	0/0
7 on 4 (GK out)	1	100%	1/1	0	0/0	0/0	0/0
6 on 6 (GK out)	1	100%	1/1	0	0/0	0/0	0/0
6 on 6	45	44%	20/29	16			
6 on 5	6	50%	3/4	2			
4 on 6	1	0%	0/1	0			

Player superiority / GK out counted at the end of attack (in case it changes during attack)

Defense with superiority / minority / goalkeeper out

	Attack				Reaction		
	Att.	Eff.	Shots	TF	FB	LD	Tot.
7 on 6 (GK out)	1	100%	1/1	0	0/0	0/0	0/0
6 on 6	48	46%	22/37	11			
5 on 6	3	33%	1/1	2			
4 on 6	2	50%	1/1	1			
6 on 5	2	50%	1/1	1			
6 on 4	3	33%	1/2	1			

Numbers show attacking numbers of opponent. Lower efficiency of opponent means better defense of this team

Jersey number Tot. Total shooting 6m 6m (line) shooting 9m 9m shooting Wng Wing shooting FB Fastbreak sh. 7m 7m penalty sh.
Brk. Breakthrough sh. LD Long distance sh. As. Assists PC Pass clear chance E7 Earned 7m pen. TF Technical faults St. Steals
2m 2m punishments C7 Committed 7m E2 Earned 2m pun. YC Yellow cards R/B Red/Blue cards Blk. Blocks S Starting Line-up



24th IHF Women's Junior (U20) World Championship



Group E, 2. round

Match Team Statistics

Match No. 26

Czech Republic 26 - 27 China

(13 - 16) (13 - 11)

21.6.2024. 15:45

Attendance: 71

Sport Centre Boris Trajkovski

Referees: Jacob Pagh (DEN) / Karl Thygesen (DEN)

Shot distribution by player

4 A. Kubáľková

		1/1
		1/1

5 V. Gabrhelová

		0/2

1 post

8 D. Šímková

		1/1
		1/1

9 S. Schreibeimerová

1/1		
0/1		0/1
2/2		1/1

1 post

10 M. Skácelová

1/1		
		0/1
1/1		

1 miss.

11 A. Brabcová

13 K. Pejšová

1/1		

15 A. Jestřibková

		0/1
1/1		

18 T. Panošková

19 V. Vávrová

		1/1
2/2	1/1	0/1

20 Š. Kapusniaková

2/3		0/1
		1/1

1/1 lob

22 T. Kráuterová

24 S. Behenská

1 post

25 E. Řádová

		1/1
3/3		
1/1		1/1

1 miss.

TOTAL

2/2		3/3
5/7		2/8
8/8	1/1	4/5

3 post 2 miss. 1/1 lob

Saves distribution goalkeepers

16 K. Stojarová

0/1		

27 P. Wizurová

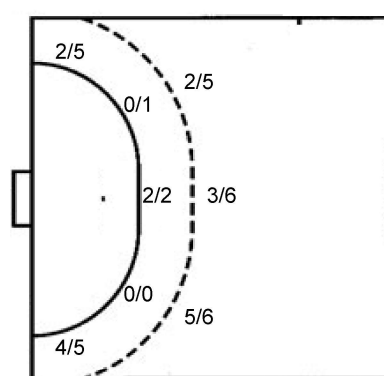
1/2	0/2	
2/8		5/11
0/5	0/1	1/4

TOTAL

1/2	0/2	
2/9		5/11
0/5	0/1	1/4

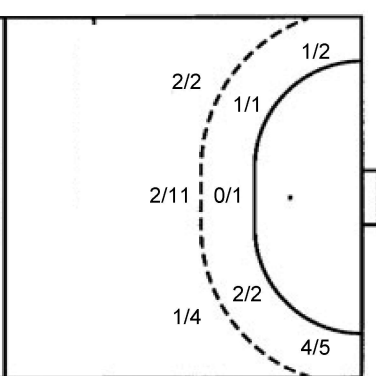
Shots by position

ATTACK



7m penalties 3/3
Fastbreak 0/1
Breakthrough 5/6
Long dist. 0/0

DEFENSE



7m penalties 3/4
Fastbreak 3/3
Breakthrough 8/10
Long dist. 0/0

Shooting statistics

Position	Goals	Sav.	Miss.	Post	Blk.	Total	%
Back (9m)	10	5	1	1	0	17	59
Line (6m)	2	1	0	0	0	3	67
Wing	6	2	1	1	0	10	60
7m penalties	3	0	0	0	0	3	100
Fastbreak	0	1	0	0	0	1	0
Breakthrough	5	0	0	1	0	6	83
Total	26	9	2	3	0	40	65

Jersey number Tot. Total shooting 6m 6m (line) shooting 9m 9m shooting Wng Wing shooting FB Fastbreak sh. 7m 7m penalty sh.
Brk. Breakthrough sh. LD Long distance sh. As. Assists PC Pass clear chance E7 Earned 7m pen. TF Technical faults St. Steals
2m 2m punishments C7. Committed 7m E2 Earned 2m pun. YC. Yellow cards R/B Red/Blue cards Blk. Blocks S Starting Line-up

Handball statistics and livescore by Toma-soft ltd (www.toma-soft.hr)



24th IHF Women's Junior (U20) World Championship



Group E, 2. round

Match Team Statistics

Czech Republic 26 - 27 China

21.6.2024. 15:45

Match No. 26

(13 - 16) (13 - 11)

Attendance: 71

Sport Centre Boris Trajkovski

Referees: Jacob Pagh (DEN) / Karl Thygesen (DEN)

China

Players		Goals / shots									Attack					Def.			Penalties				TP		
#	Surname and name	S	Tot.	%	9m	6m	Wing	7m	FB	Brk.	LD	As.	PC	E7	E2	TF	St.	C7	Blk	YC	2m	R	B		
1	SUN Yihan																								4:12
3	PAN Fengying	S	4/7	57	1/3	0/1				3/3		1			1	2									47:35
5	ZHUO Ziyi																								
6	LIU Ziran																								
7	ZHANG Siyu	S	2/2	100			1/1			1/1						1							1		48:41
8	LIANG Jing		0/1	0	0/1							1				2									12:25
10	SHI Zihan	S	7/8	88		1/1	4/5		1/1	1/1		1		1		3	1								60:00
12	YANG Chunfeng																								19:19
13	ZHUANG Hongyan	S	4/8	50	2/5	1/1		1/2				2				2		2							41:25
15	YANG Yue													1										1	20:14
18	WANG Jingjing		1/5	20	0/3					1/2		2	1			1		1						1	18:35
20	HOU Changqing	S	4/4	100		1/1			2/2	1/1				1	1	1								1	39:46
22	LI Luyao	S														1									36:29
23	WANG Xiaoyun																								2:04
28	LIU Xuedan	S	5/9	56	2/5			2/2		1/2		4	1	1	1	3	3								57:56
53	LIU Yuting		0/1	0			0/1																		11:19
	Team / bench																								
	UKUPNO		27/45	60	5/17	3/4	5/7	3/4	3/3	8/10	0/0	11	2	4	3	16	4	3	0	0	0	3	1	0	

Goalkeepers		Saves / shots								
#	Surname and name	Tot.	%	9m	6m	Wing	7m	FB	Brk.	LD
1	SUN Yihan	0/2	0		0/1		0/1			
12	YANG Chunfeng	4/10	40	2/5		1/2	0/1	1/1	0/1	
22	LI Luyao	5/23	22	3/10	1/2	1/6	0/1		0/4	
	TOTAL	9/35	26	5/15	1/3	2/8	0/3	1/1	0/5	0/0

Coach: Suzana Lazovic

Number of attacks: 59, Efficiency: 46%, Average Duration: 33.74 seconds

Attack by type of defense

	Shots	9m	6m	Wing	TF	E7	E2
On def. 6-0	17/30	3/12	2/2	5/7	12	3	2
On def. 5-1	1/4	0/2	0/1	0/0	3	1	1
On def. 4-2	0/1	0/1	0/0	0/0	1	0	0
Fastbreak	3/3				0	0	0

Defense by type

	Total	9m	6m	Wing	Stl.	C7	2m
Def. 6-0	20/31	9/15	1/2	5/8	2	1	0
Def. 5-1	2/3	1/1	1/1	0/1	2	2	0
Fastbreak	0/1				0	0	3

Attack with superiority / minority / goalkeeper out

	Attack				Reaction		
	Att.	Eff.	Shots	TF	FB	LD	Tot.
7 on 6 (GK out)	1	100%	1/1	0	0/0	0/0	0/0
6 on 6	48	46%	22/37	11			
5 on 6	3	33%	1/1	2			
4 on 6	2	50%	1/1	1			
6 on 5	2	50%	1/1	1			
6 on 4	3	33%	1/2	1			

Player superiority / GK out counted at the end of attack (in case it changes during attack)

Defense with superiority / minority / goalkeeper out

	Attack				Reaction		
	Att.	Eff.	Shots	TF	FB	LD	Tot.
7 on 6 (GK out)	2	50%	1/2	0	0/0	0/0	0/0
7 on 4 (GK out)	1	100%	1/1	0	0/0	0/0	0/0
6 on 6 (GK out)	1	100%	1/1	0	0/0	0/0	0/0
6 on 6	45	44%	20/29	16			
6 on 5	6	50%	3/4	2			
4 on 6	1	0%	0/1	0			

Numbers show attacking numbers of opponent. Lower efficiency of opponent means better defense of this team

Jersey number Tot. Total shooting 6m 6m (line) shooting 9m 9m shooting Wng Wing shooting FB Fastbreak sh. 7m 7m penalty sh.
 Brk. Breakthrough sh. LD Long distance sh. As. Assists PC Pass clear chance E7 Earned 7m pen. TF Technical faults St. Steals
 2m 2m punishments C7. Committed 7m E2 Earned 2m pun. YC. Yellow cards R/B Red/Blue cards Blk. Blocks S Starting Line-up



24th IHF Women's Junior (U20) World Championship



Group E, 2. round

Match Team Statistics

Match No. 26

Czech Republic 26 - 27 China

(13 - 16) (13 - 11)

21.6.2024. 15:45

Attendance: 71

Sport Centre Boris Trajkovski

Referees: Jacob Pagh (DEN) / Karl Thygesen (DEN)

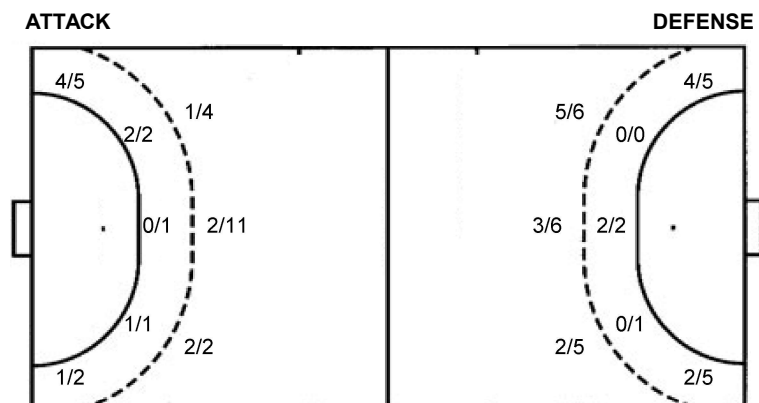
Shot distribution by player

3 F. Pan 1 block 2/4 1/1 1/1	5 Z. Zhuo	6 Z. Liu	7 S. Zhang 1/1 1/1	8 J. Liang 0/1	10 Z. Shi 1 post 1/1 1/1 3/3 1/1 1/1	13 H. Zhuang 1 miss. 1 block 1/1 1/1 1/2 1/2 1/1
15 Y. Yang	18 J. Wang 0/1 0/2 1/1	20 C. Hou 1/1 1/1 2/2 lob	23 X. Wang	28 X. Liu 2 post 1 miss. 1 block 1/1 2/2 1/1 1/1	53 Y. Liu 1 post	TOTAL 1/2 2/2 6/11 7/9 6/11 5/5 1/1 3/4 4 post 2 miss. 3 block 2/2 lob

Saves distribution goalkeepers

1 Y. Sun 0/1 0/1	12 C. Yang 0/1 2/3 0/1 0/2	22 L. Li 0/1 0/2 0/4 4/5 0/6 0/1 1/3	TOTAL 0/2 0/3 2/7 6/8 0/8 0/1 1/5
-------------------------------	---	--	---

Shots by position



7m penalties 3/4
Fastbreak 3/3
Breakthrough 8/10
Long dist. 0/0

7m penalties 3/3
Fastbreak 0/1
Breakthrough 5/6
Long dist. 0/0

Shooting statistics

Position	Goals	Sav.	Miss.	Post	Blk.	Total	%
Back (9m)	5	7	1	1	3	17	29
Line (6m)	3	1	0	0	0	4	75
Wing	5	0	0	2	0	7	71
7m penalties	3	0	1	0	0	4	75
Fastbreak	3	0	0	0	0	3	100
Breakthrough	8	1	0	1	0	10	80
Total	27	9	2	4	3	45	60

Jersey number Tot. Total shooting 6m 6m (line) shooting 9m 9m shooting Wng Wing shooting FB Fastbreak sh. 7m 7m penalty sh.
Brk. Breakthrough sh. LD Long distance sh. As. Assists PC Pass clear chance E7 Earned 7m pen. TF Technical faults St. Steals
2m 2m punishments C7. Committed 7m E2 Earned 2m pun. YC. Yellow cards R/B Red/Blue cards Blk. Blocks S Starting Line-up

