



24th IHF Women's Junior (U20) World Championship



Group E, 2. round

Match Team Statistics

Algeria 13 - 38 Sweden

21.6.2024. 13:30

Match No. 25

(9 - 18) (4 - 20)

Attendance: 73

Sport Centre Boris Trajkovski

Referees: Andrej Budzak (SVK) / Michal Zahradnik (SVK)

Algeria

| # | Surname and name | S | Goals / shots | | | | | | | | Attack | | | | | Def. | | | Penalties | | | | TP | | | | | |
|----|----------------------|---|---------------|----|------|-----|------|-----|-----|------|--------|-----|----|----|----|------|-----|----|-----------|----|----|---|----|---|---|---|--|-------|
| | | | Tot. | % | 9m | 6m | Wing | 7m | FB | Brk. | LD | As. | PC | E7 | E2 | TF | St. | C7 | Blk | YC | 2m | R | | B | | | | |
| 5 | IMANE Farah | | 0/1 | 0 | | | 0/1 | | | | | | | | | | | | | | | | | | | | | 28:59 |
| 6 | AZZI Sarah | | 1/4 | 25 | 1/4 | | | | | | | | | | 1 | | | | | | | | | | | | | 22:35 |
| 10 | MAKDOUD Hanane | | 1/4 | 25 | 0/2 | 1/1 | | | | 0/1 | | | | | | | | | | | | | | | | | | 17:16 |
| 11 | FETTANI Maya | S | 3/5 | 60 | 1/3 | 1/1 | | | | | | | | | | | | | | | | | | | | | | 31:51 |
| 12 | BERKANI Alycia | | 0/2 | 0 | 0/1 | | | | | 0/1 | | | | | | | | | | | | | | | | | | 10:52 |
| 15 | NACEUR Sanae | S | 2/3 | 67 | 2/2 | | | 0/1 | | | | | | | 2 | | 1 | | | | | | | | | | | 37:28 |
| 16 | HADDAD Zineb Yousra | S | | | | | | | | | | | | | | | | | | | | | | | | | | 33:00 |
| 17 | CHEBLI Melissa | S | | | | | | | | | | | | | | | | | | | | | | | | | | 53:27 |
| 20 | MERIEEM Zidani | | | | | | | | | | | | | | | | | | | | | | | | | | | 3:49 |
| 21 | ATMANI Soulef | S | 0/4 | 0 | 0/1 | 0/1 | | | | 0/2 | | | | | 1 | 1 | 1 | | | | | | | | | | | 43:28 |
| 22 | YELLES Lyna | S | 3/4 | 75 | | 3/4 | | | | | | | | | 1 | | | | | | | | | | | | | 49:17 |
| 27 | BERKANI Lylia | | 1/2 | 50 | 0/1 | 1/1 | | | | | | | | | | | | | | | | | | | | | | 26:27 |
| 31 | BAKKAR Halima Sadia | | | | | | | | | | | | | | | | | | | | | | | | | | | 17:33 |
| 33 | SALAH Oumenia Meriem | | | | | | | | | | | | | | | | | | | | | | | | | | | 5:36 |
| 77 | AISSA Ines | S | 2/4 | 50 | | | | 2/2 | | 0/2 | | | | | 1 | | | | | | | | | | | | | 28:05 |
| 99 | RADJA Warda | | | | | | | | | | | | | | | | | | | | | | | | | | | 7:01 |
| | Team / bench | | | | | | | | | | | | | | | | | | | | | | | | | | | |
| | UKUPNO | | 13/33 | 39 | 4/14 | 6/8 | 0/2 | 2/2 | 0/2 | 1/5 | 0/0 | | | | 5 | 2 | 2 | 0 | 33 | 1 | 4 | 1 | 0 | 3 | 0 | 0 | | |

| # | Surname and name | Saves / shots | | | | | | | | |
|----|----------------------|---------------|----|------|-----|------|-----|------|------|-----|
| | | Tot. | % | 9m | 6m | Wing | 7m | FB | Brk. | LD |
| 16 | HADDAD Zineb Yousra | 5/26 | 19 | 0/9 | 1/2 | 0/3 | 1/2 | 1/6 | 2/4 | |
| 31 | BAKKAR Halima Sadia | 5/16 | 31 | 3/5 | 0/1 | 1/2 | 0/1 | 0/4 | 1/3 | |
| 33 | SALAH Oumenia Meriem | 1/4 | 25 | | 0/1 | | 0/1 | | 0/1 | 1/1 |
| | TOTAL | 11/46 | 24 | 3/14 | 1/4 | 1/5 | 1/4 | 1/10 | 3/8 | 1/1 |

Coach: **Abdelkader Rayane**

Number of attacks: 61, Efficiency: 21%, Average Duration: 36.79 seconds

Attack by type of defense

| | Shots | 9m | 6m | Wing | TF | E7 | E2 |
|-------------|-------|-----|-----|------|----|----|----|
| On def. 6-0 | 8/16 | 3/7 | 4/5 | 0/1 | 14 | 1 | 0 |
| On def. 5-1 | 2/12 | 1/7 | 1/2 | 0/1 | 19 | 1 | 0 |
| Fastbreak | 0/2 | | | | 0 | 0 | 0 |

Defense by type

| | Total | 9m | 6m | Wing | Stl. | C7 | 2m |
|-----------|-------|-------|-----|------|------|----|----|
| Def. 6-0 | 22/33 | 11/16 | 2/3 | 4/6 | 1 | 4 | 0 |
| Fastbreak | 10/11 | | | | 0 | 0 | 3 |

Attack with superiority / minority / goalkeeper out

| | Attack | | | | Reaction | | |
|-----------------|--------|------|-------|----|----------|-----|------|
| | Att. | Eff. | Shots | TF | FB | LD | Tot. |
| 7 on 6 (GK out) | 11 | 9% | 1/1 | 10 | 0/1 | 2/2 | 2/3 |
| 6 on 6 (GK out) | 3 | 33% | 1/2 | 1 | 1/1 | 0/1 | 1/2 |
| 6 on 6 | 44 | 25% | 11/23 | 21 | | | |
| 5 on 6 | 3 | 0% | 0/2 | 1 | | | |

Player superiority / GK out counted at the end of attack (in case it changes during attack)

Defense with superiority / minority / goalkeeper out

| | Attack | | | | Reaction | | |
|-----------------|--------|------|-------|----|----------|-----|------|
| | Att. | Eff. | Shots | TF | FB | LD | Tot. |
| 7 on 6 (GK out) | 7 | 29% | 2/5 | 2 | 0/0 | 0/0 | 0/0 |
| 6 on 6 | 47 | 64% | 30/39 | 8 | | | |
| 6 on 5 | 8 | 75% | 6/8 | 0 | | | |

Numbers show attacking numbers of opponent. Lower efficiency of opponent means better defense of this team

Jersey number Tot. Total shooting 6m 6m (line) shooting 9m 9m shooting Wng Wing shooting FB Fastbreak sh. 7m 7m penalty sh.
 Brk. Breakthrough sh. LD Long distance sh. As. Assists PC Pass clear chance E7 Earned 7m pen. TF Technical faults St. Steals
 2m 2m punishments C7. Committed 7m E2 Earned 2m pun. YC. Yellow cards R/B Red/Blue cards Blk. Blocks S Starting Line-up



24th IHF Women's Junior (U20) World Championship



Group E, 2. round

Match Team Statistics

Match No. 25

Algeria 13 - 38 Sweden

(9 - 18) (4 - 20)

21.6.2024. 13:30

Attendance: 73

Sport Centre Boris Trajkovski

Referees: Andrej Budzak (SVK) / Michal Zahradnik (SVK)

Shot distribution by player

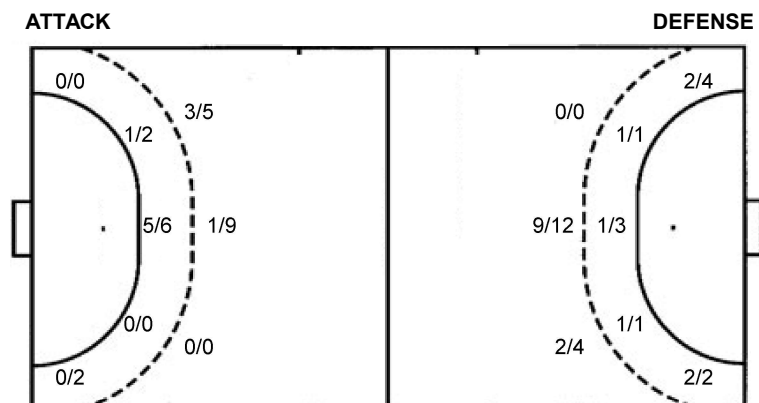
| 5 F. Imane | 6 S. Azzi | 10 H. Makdoud | 11 M. Fettani | 12 A. Berkani | 15 S. Naceur | 17 M. Chebli |
|------------|-----------|---------------|---------------|---------------|--------------|--------------|
| 0/1 | 0/1 | 1/1 | 0/1 | 0/1 | 1/1 | |
| 0/1 | 0/1 | 0/1 | 1/1 | 0/1 | 1/1 | |
| | 1/1 | 0/1 | 1/1 | | | |
| | 1 miss. | 1 miss. | 1 miss. | | 1 post | |

| 20 Z. Meriem | 21 S. Atmani | 22 L. Yelles | 27 L. Berkani | 77 I. Aissa | 99 W. Radja | TOTAL |
|--------------|--------------|----------------|---------------|-------------|-------------|------------------------|
| | 0/1 | | | 1/1 | | 2/3 |
| | 0/2 | 1/1 | 1/2 | 1/2 | | 3/3 |
| | 1 post | 1 post 1/1 lob | | 1 post | | 2/5 |
| | | | | | | 2/3 |
| | | | | | | 1/2 |
| | | | | | | 1/7 |
| | | | | | | 2/5 |
| | | | | | | 2/3 |
| | | | | | | 1/1 |
| | | | | | | 4 post 3 miss. 1/1 lob |

Saves distribution goalkeepers

| 16 Z. Haddad | 31 H. Bakkar | 33 O. Salah | TOTAL |
|--------------|--------------|-------------|-------|
| 1/4 | 0/1 | 0/1 | 1/6 |
| 0/1 | 1/3 | 1/1 | 0/1 |
| 0/2 | 1/2 | 0/1 | 1/3 |
| 1/6 | 1/1 | 1/1 | 2/2 |
| 1/6 | 0/2 | 0/1 | 1/4 |
| | 2/6 | | 3/13 |
| | 0/2 | | 1/2 |
| | | | 1/8 |

Shots by position



7m penalties 2/2
Fastbreak 0/2
Breakthrough 1/5
Long dist. 0/0

7m penalties 3/4
Fastbreak 10/11
Breakthrough 5/8
Long dist. 2/3

Shooting statistics

| Position | Goals | Sav. | Miss. | Post | Blk. | Total | % |
|--------------|-----------|-----------|----------|----------|----------|-----------|-----------|
| Back (9m) | 4 | 7 | 3 | 0 | 0 | 14 | 29 |
| Line (6m) | 6 | 1 | 0 | 1 | 0 | 8 | 75 |
| Wing | 0 | 1 | 0 | 1 | 0 | 2 | 0 |
| 7m penalties | 2 | 0 | 0 | 0 | 0 | 2 | 100 |
| Fastbreak | 0 | 2 | 0 | 0 | 0 | 2 | 0 |
| Breakthrough | 1 | 2 | 0 | 2 | 0 | 5 | 20 |
| Total | 13 | 13 | 3 | 4 | 0 | 33 | 39 |

Jersey number Tot. Total shooting 6m 6m (line) shooting 9m 9m shooting Wng Wing shooting FB Fastbreak sh. 7m 7m penalty sh.
Brk. Breakthrough sh. LD Long distance sh. As. Assists PC Pass clear chance E7 Earned 7m pen. TF Technical faults St. Steals
2m 2m punishments C7. Committed 7m E2 Earned 2m pun. YC. Yellow cards R/B Red/Blue cards Blk. Blocks S Starting Line-up

Handball statistics and livescore by Toma-soft ltd (www.toma-soft.hr)



24th IHF Women's Junior (U20) World Championship



Group E, 2. round

Match Team Statistics
Match No. 25

Algeria 13 - 38 Sweden
(9 - 18) (4 - 20)

21.6.2024. 13:30
Attendance: 73
Sport Centre Boris Trajkovski

Referees: Andrej Budzak (SVK) / Michal Zahradnik (SVK)

Sweden

| Players | | Goals / shots | | | | | | | | | Attack | | | | | Def. | | | Penalties | | | TP | | | |
|---------|-----------------------|---------------|-------|-----|-------|-----|------|-----|-------|------|--------|-----|----|----|----|------|-----|----|-----------|----|----|----|---|--|-------|
| # | Surname and name | S | Tot. | % | 9m | 6m | Wing | 7m | FB | Brk. | LD | As. | PC | E7 | E2 | TF | St. | C7 | Blk | YC | 2m | R | B | | |
| 5 | HOLGERSSON Michelle | | | | | | | | | | | | | | | | | | | | | | | | |
| 6 | MIHAILOVIC Emma | | 2/2 | 100 | 2/2 | | | | | | | | 1 | 1 | | | 1 | 1 | | | | | | | 7:11 |
| 7 | JOHANSSON Sophie | S | 4/6 | 67 | | 1/1 | 2/4 | | 1/1 | | | | 2 | | | | 1 | | | | | | | | 59:55 |
| 8 | REHNBERG Madeleine | S | 4/5 | 80 | 2/3 | | | | 2/2 | | | | 2 | | | 2 | 1 | 1 | | | | | | | 49:36 |
| 11 | LÖNNEGREN Elise | S | 6/8 | 75 | 2/3 | | | | 2/3 | 2/2 | | | 1 | 1 | 2 | 2 | 3 | | | | | | | | 51:47 |
| 12 | JOHANSSON Ella | | 1/1 | 100 | | | | | | | 1/1 | 1 | | | | | | | | | | | | | 30:00 |
| 13 | GRANAT Felicia | S | 0/1 | 0 | | | | | | 0/1 | | | | | | | | | | | | | | | 21:26 |
| 14 | WIKSFORS Stina | S | 1/2 | 50 | | 1/2 | | | | | | | | 2 | 1 | 1 | 2 | 1 | | | | | | | 25:42 |
| 16 | WALL Ida | S | | | | | | | | | | 1 | | | | | | | | | | | | | 30:00 |
| 18 | VAN KERKVOORDE Isabel | | | | | | | | | | | | | | | | | | | | | | | | |
| 19 | KYLBERG Thea | S | 6/6 | 100 | 3/3 | | 1/1 | | 1/1 | 1/1 | | | | | | 2 | | | | | | | | | 15:24 |
| 21 | LITTORIN Stina | | | | | | | | | | | | | | | | | | | | | | | | |
| 25 | WALLIN Moa | | 3/6 | 50 | 1/3 | 1/1 | | 1/2 | | | | 1 | | | | 2 | 1 | | | | | | | | 44:36 |
| 28 | CANTBY Hilma | | 5/6 | 83 | | | 1/1 | 2/2 | 1/1 | 0/1 | 1/1 | | | 1 | | | 2 | | | | | | | | 36:28 |
| 31 | LEO Ebba | | | | | | | | | | | | | | | | | | | | | | | | |
| 32 | ÖSTERWALL Elin | | 6/10 | 60 | 1/2 | 0/1 | | | 3/3 | 2/3 | 0/1 | 2 | 1 | | | | 3 | | | | 1 | | | | 47:33 |
| | Team / bench | | | | | | | | | | | | | | | | | | | | | | | | |
| | UKUPNO | | 38/53 | 72 | 11/16 | 3/5 | 4/6 | 3/4 | 10/11 | 5/8 | 2/3 | 10 | 3 | 4 | 3 | 10 | 14 | 2 | 0 | 1 | 0 | 0 | 0 | | |

| Goalkeepers | | Saves / shots | | | | | | | | |
|-------------|------------------|---------------|----|------|-----|------|-----|-----|------|-----|
| # | Surname and name | Tot. | % | 9m | 6m | Wing | 7m | FB | Brk. | LD |
| 12 | JOHANSSON Ella | 7/11 | 64 | 5/6 | 0/2 | 1/1 | 0/1 | 1/1 | | |
| 16 | WALL Ida | 6/15 | 40 | 2/5 | 1/5 | | 0/1 | 1/1 | 2/3 | |
| 21 | LITTORIN Stina | | | | | | | | | |
| | TOTAL | 13/26 | 50 | 7/11 | 1/7 | 1/1 | 0/2 | 3/2 | 2/3 | 0/0 |

Coach: Jesper Östlund

Number of attacks: 62, Efficiency: 61%, Average Duration: 21.85 seconds

Attack by type of defense

| | Shots | 9m | 6m | Wing | TF | E7 | E2 |
|-------------|-------|-------|-----|------|----|----|----|
| On def. 6-0 | 22/33 | 11/16 | 2/3 | 4/6 | 10 | 4 | 3 |
| Fastbreak | 10/11 | | | | 0 | 0 | 0 |

Defense by type

| | Total | 9m | 6m | Wing | Stl. | C7 | 2m |
|-----------|-------|-----|-----|------|------|----|----|
| Def. 6-0 | 8/16 | 3/7 | 4/5 | 0/1 | 4 | 1 | 0 |
| Def. 5-1 | 2/12 | 1/7 | 1/2 | 0/1 | 10 | 1 | 0 |
| Fastbreak | 0/2 | | | | 0 | 0 | 0 |

Attack with superiority / minority / goalkeeper out

| | Attack | | | | Reaction | | |
|-----------------|--------|------|-------|----|----------|-----|------|
| | Att. | Eff. | Shots | TF | FB | LD | Tot. |
| 7 on 6 (GK out) | 7 | 29% | 2/5 | 2 | 0/0 | 0/0 | 0/0 |
| 6 on 6 | 47 | 64% | 30/39 | 8 | | | |
| 6 on 5 | 8 | 75% | 6/8 | 0 | | | |

Player superiority / GK out counted at the end of attack (in case it changes during attack)

Defense with superiority / minority / goalkeeper out

| | Attack | | | | Reaction | | |
|-----------------|--------|------|-------|----|----------|-----|------|
| | Att. | Eff. | Shots | TF | FB | LD | Tot. |
| 7 on 6 (GK out) | 11 | 9% | 1/1 | 10 | 0/1 | 2/2 | 2/3 |
| 6 on 6 (GK out) | 3 | 33% | 1/2 | 1 | 1/1 | 0/1 | 1/2 |
| 6 on 6 | 44 | 25% | 11/23 | 21 | | | |
| 5 on 6 | 3 | 0% | 0/2 | 1 | | | |

Numbers show attacking numbers of opponent. Lower efficiency of opponent means better defense of this team

Jersey number Tot. Total shooting 6m 6m (line) shooting 9m 9m shooting Wng Wing shooting FB Fastbreak sh. 7m 7m penalty sh.
Brk. Breakthrough sh. LD Long distance sh. As. Assists PC Pass clear chance E7 Earned 7m pen. TF Technical faults St. Steals
2m 2m punishments C7. Committed 7m E2 Earned 2m pun. YC. Yellow cards R/B Red/Blue cards Blk. Blocks S Starting Line-up

Handball statistics and livescore by Toma-soft ltd (www.toma-soft.hr)



24th IHF Women's Junior (U20) World Championship



Group E, 2. round

Match Team Statistics

Match No. 25

Algeria 13 - 38 Sweden

(9 - 18) (4 - 20)

21.6.2024. 13:30

Attendance: 73

Sport Centre Boris Trajkovski

Referees: Andrej Budzak (SVK) / Michal Zahradnik (SVK)

Shot distribution by player

5 M. Holgersson

| | | |
|--|--|--|
| | | |
| | | |
| | | |

6 E. Mihailovic

| | | |
|-----|--|-----|
| | | |
| | | |
| 1/1 | | 1/1 |

7 S. Johansson

| | | |
|-----|--|-----|
| 1/1 | | |
| | | 1/1 |
| 0/1 | | 2/2 |

1 post

8 M. Rehnberg

| | | |
|-----|-----|-----|
| | 1/1 | 2/2 |
| | | |
| 1/1 | | |

1 miss.

11 E. Lönnegren

| | | |
|-----|-----|-----|
| | | 1/1 |
| | | |
| 1/1 | | |
| 4/5 | 0/1 | |

13 F. Granat

| | | |
|-----|--|--|
| | | |
| | | |
| | | |
| 0/1 | | |

14 S. Wiksfors

| | | |
|-----|--|--|
| 0/1 | | |
| | | |
| | | |
| 1/1 | | |

18 I. Van Kerkvoorde

| | | |
|--|--|--|
| | | |
| | | |
| | | |

19 T. Kylberg

| | | |
|-----|--|-----|
| 2/2 | | 1/1 |
| | | |
| 1/1 | | 2/2 |

25 M. Wallin

| | | |
|-----|-----|-----|
| 1/1 | | |
| 0/1 | 0/1 | |
| 1/1 | 1/1 | 0/1 |

28 H. Cantby

| | | |
|-----|-----|-----|
| 1/1 | | 1/2 |
| | 1/1 | 1/1 |
| | | 1/1 |

31 E. Leo

| | | |
|--|--|--|
| | | |
| | | |
| | | |

32 E. Österwall

| | | |
|-----|-----|-----|
| | | 1/1 |
| 1/1 | 1/2 | 1/2 |
| 1/1 | | 1/1 |

1 post 1 block

TOTAL

| | | |
|-------|-----|-----|
| 5/6 | 1/1 | 6/7 |
| 2/3 | 2/4 | 3/4 |
| 10/13 | 1/2 | 7/8 |

2 post 1 miss. 1 block

Saves distribution goalkeepers

12 E. Johansson

| | | |
|-----|-----|-----|
| 1/1 | | 1/1 |
| 0/1 | 1/2 | 2/2 |
| 2/4 | | |

16 I. Wall

| | | |
|-----|-----|-----|
| 0/2 | | |
| 0/2 | | 4/5 |
| 1/1 | 1/3 | 0/1 |

21 S. Littorin

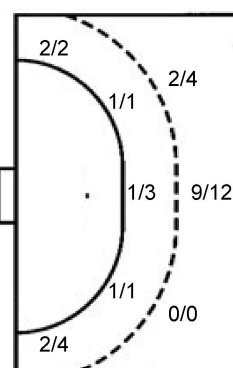
| | | |
|--|--|--|
| | | |
| | | |
| | | |

TOTAL

| | | |
|-----|-----|-----|
| 1/3 | | 1/1 |
| 0/3 | 1/2 | 6/7 |
| 3/5 | 1/3 | 0/1 |

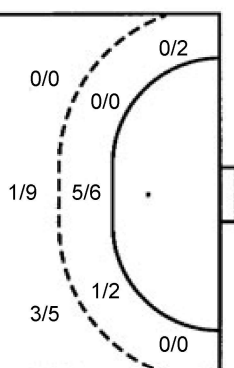
Shots by position

ATTACK



| | |
|--------------|-------|
| 7m penalties | 3/4 |
| Fastbreak | 10/11 |
| Breakthrough | 5/8 |
| Long dist. | 2/3 |

DEFENSE



| | |
|--------------|-----|
| 7m penalties | 2/2 |
| Fastbreak | 0/2 |
| Breakthrough | 1/5 |
| Long dist. | 0/0 |

Shooting statistics

| Position | Goals | Sav. | Miss. | Post | Blk. | Total | % |
|--------------|-----------|-----------|----------|----------|----------|-----------|-----------|
| Back (9m) | 11 | 3 | 1 | 0 | 1 | 16 | 69 |
| Line (6m) | 3 | 1 | 0 | 1 | 0 | 5 | 60 |
| Wing | 4 | 1 | 0 | 1 | 0 | 6 | 67 |
| 7m penalties | 3 | 1 | 0 | 0 | 0 | 4 | 75 |
| Fastbreak | 10 | 1 | 0 | 0 | 0 | 11 | 91 |
| Breakthrough | 5 | 3 | 0 | 0 | 0 | 8 | 63 |
| Total | 36 | 10 | 1 | 2 | 1 | 50 | 72 |

Jersey number Tot. Total shooting 6m 6m (line) shooting 9m 9m shooting Wng Wing shooting FB Fastbreak sh. 7m 7m penalty sh.
 Brk. Breakthrough sh. LD Long distance sh. As. Assists PC Pass clear chance E7 Earned 7m pen. TF Technical faults St. Steals
 2m 2m punishments C7. Committed 7m E2 Earned 2m pun. YC. Yellow cards R/B Red/Blue cards Blk. Blocks S Starting Line-up

Handball statistics and livescore by Toma-soft ltd (www.toma-soft.hr)

