



24th IHF Women's Junior (U20) World Championship



Group D, 2. round

Match Team Statistics

Chinese Taipei 19 - 41 Denmark

20.6.2024. 15:45

Match No. 23

(10 - 17) (9 - 24)

Attendance: 64

Sport Centre Boris Trajkovski

Referees: Yasser Awwad (JOR) / Akram Alzayyat (JOR)

Chinese Taipei

Players		Goals / shots									Attack					Def.			Penalties			TP			
#	Surname and name	S	Tot.	%	9m	6m	Wing	7m	FB	Brk.	LD	As.	PC	E7	E2	TF	St.	C7	Blk	YC	2m		R	B	
1	WU Hsin Yun																								
7	SHIH Chi Chiao En	S	2/10	20	0/5	1/1				1/4				1	1	2									45:49
8	TIEN Yun Ju	S	4/6	67	1/2	1/1				2/3			2	1	1		3		1			1			55:29
10	CHEN Yen Chun	S	0/2	0	0/1		0/1						1				2					1			40:09
14	YU Chien Yu														1										8:10
18	LI Hsin Yi	S	2/3	67						1/2	1/1														60:00
19	YU Chia Ying																								15:29
23	CHANG Fu Ying																								8:19
24	LIEN Yi Ling	S	1/5	20	1/4					0/1				2			4	1	1			1			26:56
28	LI Yun Ci											1													
29	LIN Ching		1/2	50		0/1	1/1																		6:49
36	CHUAN Heng Yi																								12:00
66	LEE Ying Chi		2/7	29	0/2			1/2		1/3			2	2	1	3		1							26:04
77	HSU Fang Ying	S	2/3	67		2/3						1		1		2						1			42:07
79	CHANG Ya Ting	S	5/14	36	1/5	2/4		2/3		0/2			1			2		1							54:21
88	YANG I Chen																		1						18:18
	Team / bench																								
	UKUPNO		19/52	37	3/19	6/10	1/2	3/5	0/0	5/15	1/1	5	6	5	3	18	1	5	0	0	0	4	0	0	

Goalkeepers		Saves / shots								
#	Surname and name	Tot.	%	9m	6m	Wing	7m	FB	Brk.	LD
1	WU Hsin Yun									
18	LI Hsin Yi	8/49	16	1/2	0/4	4/12	0/5	1/9	1/16	1/1
	TOTAL	8/49	16	1/2	0/4	4/12	0/5	1/9	1/16	1/1

Coach: Ling Hui Chia

Number of attacks: 62, Efficiency: 31%, Average Duration: 32.23 seconds

Attack by type of defense

	Shots	9m	6m	Wing	TF	E7	E2
On def. 6-0	15/46	3/19	6/10	1/2	18	5	3
Fastbreak	0/0				0	0	0

Defense by type

	Total	9m	6m	Wing	Stl.	C7	2m
Def. 6-0	26/39	1/2	3/5	7/15	1	5	0
Fastbreak	8/9				0	0	4

Attack with superiority / minority / goalkeeper out

	Attack				Reaction		
	Att.	Eff.	Shots	TF	FB	LD	Tot.
7 on 6 (GK out)	1	0%	0/1	0	0/0	0/0	0/0
6 on 6	45	33%	15/34	11			
6 on 5	9	44%	4/5	4			
5 on 6	6	0%	0/4	2			
4 on 6	1	0%	0/0	1			

Player superiority / GK out counted at the end of attack (in case it changes during attack)

Defense with superiority / minority / goalkeeper out

	Attack				Reaction		
	Att.	Eff.	Shots	TF	FB	LD	Tot.
7 on 6 (GK out)	18	78%	14/17	1	0/0	0/0	0/0
6 on 6 (GK out)	5	60%	3/4	1	0/0	1/1	1/1
6 on 6	31	58%	18/24	7			
5 on 6	2	50%	1/2	0			
7 on 5 (GK out)	1	0%	0/1	0	0/0	0/0	0/0
6 on 5	5	60%	3/5	0			
6 on 4	2	100%	2/2	0			

Numbers show attacking numbers of opponent. Lower efficiency of opponent means better defense of this team

Jersey number Tot. Total shooting 6m 6m (line) shooting 9m 9m shooting Wng Wing shooting FB Fastbreak sh. 7m 7m penalty sh.
 Brk. Breakthrough sh. LD Long distance sh. As. Assists PC Pass clear chance E7 Earned 7m pen. TF Technical faults St. Steals
 2m 2m punishments C7. Committed 7m E2 Earned 2m pun. YC. Yellow cards R/B Red/Blue cards Blk. Blocks S Starting Line-up



24th IHF Women's Junior (U20) World Championship



Group D, 2. round

Match Team Statistics

Match No. 23

Chinese Taipei 19 - 41 Denmark

(10 - 17) (9 - 24)

20.6.2024. 15:45

Attendance: 64

Sport Centre Boris Trajkovski

Referees: Yasser Awwad (JOR) / Akram Alzayyat (JOR)

Shot distribution by player

7 C. Shih 0/1 0/2 0/2 0/1 2/2 1 miss. 1 block	8 Y. Tien 1/1 2/3 1/1 1 post	10 Y. Chen 0/1 1 post	14 C. Yu	19 C. Yu	23 F. Chang	24 Y. Lien 1/1 0/1 1 post 1 miss. 1 block
28 Y. Li	29 C. Lin 0/1 1/1	36 H. Chuan	66 Y. Lee 1/1 0/1 1/3 2 block	77 F. Hsu 1/1 1/2	79 Y. Chang 1/4 0/1 3/4 1/1 0/1 3 block	88 I. Yang

TOTAL

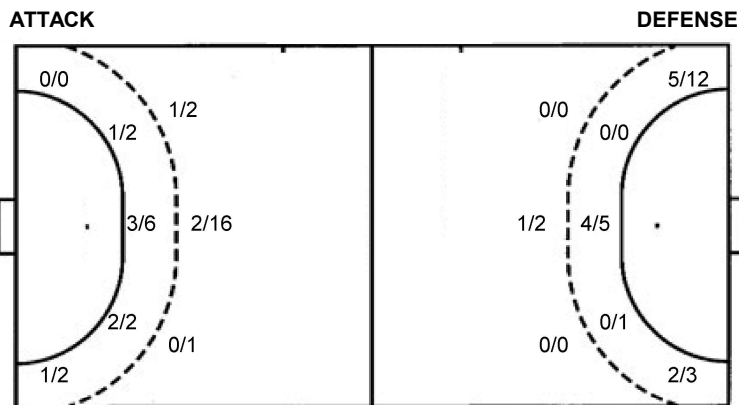
1/2		
2/7	1/1	1/4
5/10	2/3	5/10

3 post 2 miss. 7 block

Saves distribution goalkeepers

1 H. Wu	18 H. Li	TOTAL
	1/2 1/5	1/2 1/5
	2/6 2/5	2/6 2/5
	0/6 1/3 1/18	0/6 1/3 1/18

Shots by position



7m penalties 3/5
Fastbreak 0/0
Breakthrough 5/15
Long dist. 1/1

7m penalties 5/5
Fastbreak 8/9
Breakthrough 15/17
Long dist. 0/1

Shooting statistics

Position	Goals	Sav.	Miss.	Post	Blk.	Total	%
Back (9m)	3	6	2	1	7	19	16
Line (6m)	6	4	0	0	0	10	60
Wing	1	0	0	1	0	2	50
7m penalties	3	2	0	0	0	5	60
Fastbreak	0	0	0	0	0	0	0
Breakthrough	5	8	1	1	0	15	33
Total	18	20	3	3	7	51	35

Jersey number Tot. Total shooting 6m 6m (line) shooting 9m 9m shooting Wng Wing shooting FB Fastbreak sh. 7m 7m penalty sh.
Brk. Breakthrough sh. LD Long distance sh. As. Assists PC Pass clear chance E7 Earned 7m pen. TF Technical faults St. Steals
2m 2m punishments C7. Committed 7m E2 Earned 2m pun. YC. Yellow cards R/B Red/Blue cards Blk. Blocks S Starting Line-up



24th IHF Women's Junior (U20) World Championship



Group D, 2. round

Match Team Statistics

Chinese Taipei 19 - 41 Denmark

20.6.2024. 15:45

Match No. 23

(10 - 17) (9 - 24)

Attendance: 64

Sport Centre Boris Trajkovski

Referees: Yasser Awwad (JOR) / Akram Alzayyat (JOR)

Denmark

Players		Goals / shots									Attack					Def.			Penalties				TP		
#	Surname and name	S	Tot.	%	9m	6m	Wing	7m	FB	Brk.	LD	As.	PC	E7	E2	TF	St.	C7	Blk	YC	2m	R		B	
1	ALMIND Stine Skovbo	S																							31:15
3	BANG Clara Ronde Haugaard		5/6	83	1/1					4/5		4		1	2										21:15
6	LAURSEN Boline Haugaard		3/4	75		1/2			2/2					1	1		1								26:51
7	VESTERGAARD Matilde Marie		11/16	69			4/9	5/5	2/2													1			43:55
8	NIELSEN Ida Marie Wrang	S	1/1	100						1/1			1			2									43:49
9	THESTRUP Laura Maria Borg																								
10	LARSEN Filippa Nedovic	S	2/3	67		2/3								1									1		40:31
12	KAYSEN Ida Marie Barholm																						1		18:51
14	WAAGE-JENSEN Frederikke	S	2/3	67			2/3												1						29:03
17	JENSEN Emma Skipper	S	0/1	0							0/1								1	3					25:37
18	NICKELSEN Martha		3/3	100					1/1	2/2		5	3			2						2			34:54
21	JOHANSEN Anne With	S	4/5	80	0/1	1/1				3/3		5		2	1	3			1				1		25:11
23	LARSEN Josefine Kaa	S	1/3	33			1/3																		17:04
24	LUND Esther Birk																						1		
25	VINTHER Nanna Skovmose		4/5	80			1/1		3/4			1			1		3								24:56
28	LUND Astrid Leslie		5/6	83						5/6		2	5			2		1					2		35:09
	Team / bench																								
	UKUPNO		41/56	73	1/2	4/6	8/16	5/5	8/9	15/17	0/1	17	10	5	5	9	4	5	7	0	4	0	0		

Goalkeepers		Saves / shots								
#	Surname and name	Tot.	%	9m	6m	Wing	7m	FB	Brk.	LD
1	ALMIND Stine Skovbo	16/24	67	6/7	3/7		1/3		6/7	
12	KAYSEN Ida Marie Barholm	4/14	29	0/2	1/3	0/1	1/2		2/6	
	TOTAL	20/38	53	6/9	4/10	0/1	2/5	1/0	8/13	0/0

Coach: Flemming Dam Larsen

Number of attacks: 64, Efficiency: 64%, Average Duration: 25.02 seconds

Attack by type of defense

	Shots	9m	6m	Wing	TF	E7	E2
On def. 6-0	26/39	1/2	3/5	7/15	9	5	5
Fastbreak	8/9				0	0	0

Defense by type

	Total	9m	6m	Wing	Stl.	C7	2m
Def. 6-0	15/46	3/19	6/10	1/2	4	5	0
Fastbreak	0/0				0	0	4

Attack with superiority / minority / goalkeeper out

	Attack				Reaction		
	Att.	Eff.	Shots	TF	FB	LD	Tot.
7 on 6 (GK out)	18	78%	14/17	1	0/0	0/0	0/0
6 on 6 (GK out)	5	60%	3/4	1	0/0	1/1	1/1
6 on 6	31	58%	18/24	7			
5 on 6	2	50%	1/2	0			
7 on 5 (GK out)	1	0%	0/1	0	0/0	0/0	0/0
6 on 5	5	60%	3/5	0			
6 on 4	2	100%	2/2	0			

Player superiority / GK out counted at the end of attack (in case it changes during attack)

Defense with superiority / minority / goalkeeper out

	Attack				Reaction		
	Att.	Eff.	Shots	TF	FB	LD	Tot.
7 on 6 (GK out)	1	0%	0/1	0	0/0	0/0	0/0
6 on 6	45	33%	15/34	11			
6 on 5	9	44%	4/5	4			
5 on 6	6	0%	0/4	2			
4 on 6	1	0%	0/0	1			

Numbers show attacking numbers of opponent. Lower efficiency of opponent means better defense of this team

Jersey number Tot. Total shooting 6m 6m (line) shooting 9m 9m shooting Wng Wing shooting FB Fastbreak sh. 7m 7m penalty sh.
 Brk. Breakthrough sh. LD Long distance sh. As. Assists PC Pass clear chance E7 Earned 7m pen. TF Technical faults St. Steals
 2m 2m punishments C7. Committed 7m E2 Earned 2m pun. YC. Yellow cards R/B Red/Blue cards Blk. Blocks S Starting Line-up



24th IHF Women's Junior (U20) World Championship



Group D, 2. round

Match Team Statistics

Match No. 23

Chinese Taipei 19 - 41 Denmark

(10 - 17) (9 - 24)

20.6.2024. 15:45

Attendance: 64

Sport Centre Boris Trajkovski

Referees: Yasser Awwad (JOR) / Akram Alzayyat (JOR)

Shot distribution by player

3 C. Bang 1 post 2/2 1/1 1/1 1/1	6 B. Laursen 1 post 1/1 2/2	7 M. Vestergaard 3 post 2/2 lob 1/2 1/2 1/1 2/2 4/4	8 I. Nielsen 1/1	9 L. Thestrup	10 F. Larsen 1 post 1/1 1/1	14 F. Waage-Jensen 1/1 lob 0/1 1/1
17 E. Jensen 0/1	18 M. Nickelsen 1/1 1/1 1/1	21 A. Johansen 0/1 2/2 2/2	23 J. Larsen 1 miss. 0/1 1/1	24 E. Lund	25 N. Vinther 1/1 2/2 0/1	28 A. Lund 1/1 2/3 2/2

TOTAL

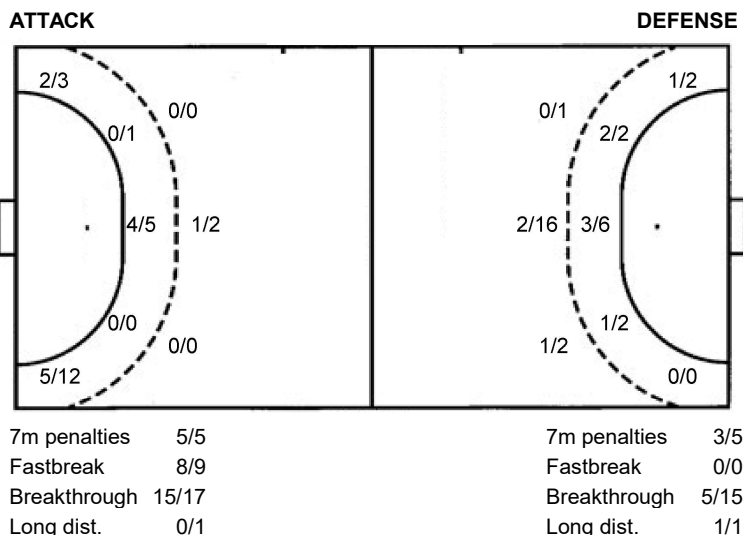
1/2	4/5
4/6	3/5
6/6	2/3 17/18

6 post 1 miss. 3/3 lob

Saves distribution goalkeepers

1 S. Almind 1/1 4/5 3/6 0/1 2/3 1/2 5/6	12 I. Kaysen 0/1 1/2 2/4 0/1 1/1 0/1 0/5	TOTAL 1/2 5/7 5/10 0/1 3/4 1/3 5/11
--	---	--

Shots by position



Shooting statistics

Position	Goals	Sav.	Miss.	Post	Blk.	Total	%
Back (9m)	1	1	0	0	0	2	50
Line (6m)	4	0	0	2	0	6	67
Wing	7	4	1	3	0	15	47
7m penalties	5	0	0	0	0	5	100
Fastbreak	8	1	0	0	0	9	89
Breakthrough	15	1	0	1	0	17	88
Total	40	7	1	6	0	54	74

Jersey number Tot. Total shooting 6m 6m (line) shooting 9m 9m shooting Wng Wing shooting FB Fastbreak sh. 7m 7m penalty sh.
 Brk. Breakthrough sh. LD Long distance sh. As. Assists PC Pass clear chance E7 Earned 7m pen. TF Technical faults St. Steals
 2m 2m punishments C7. Committed 7m E2 Earned 2m pun. YC. Yellow cards R/B Red/Blue cards Blk. Blocks S Starting Line-up



24th IHF Women's Junior (U20) World Championship



Group D, 2. round

Match Team Statistics

Match No. 23

Chinese Taipei 19 - 41 Denmark

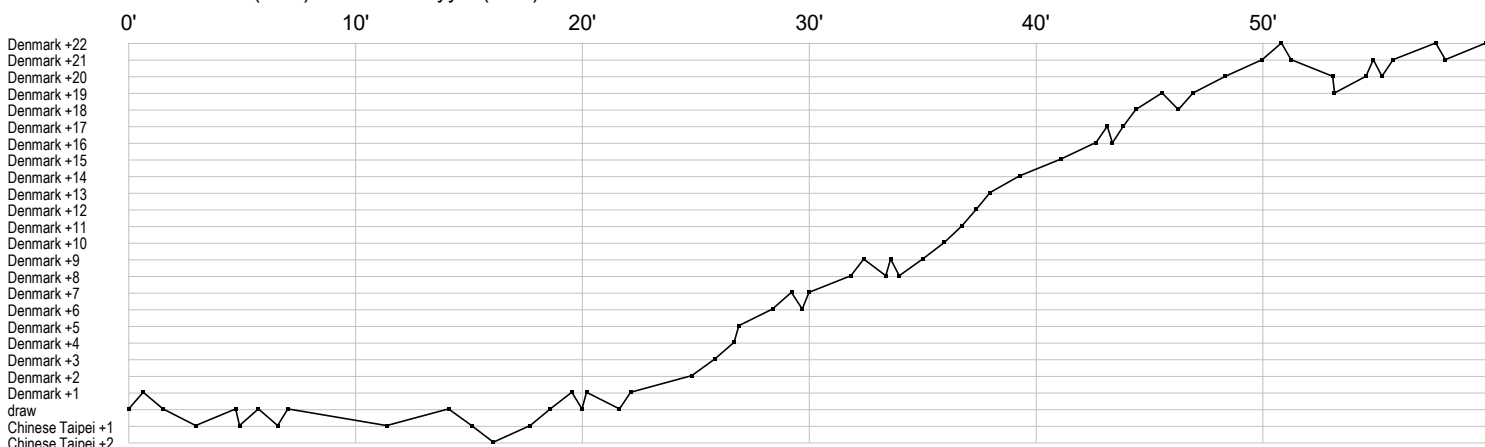
(10 - 17) (9 - 24)

20.6.2024. 15:45

Attendance: 64

Sport Centre Boris Trajkovski

Referees: Yasser Awwad (JOR) / Akram Alzayyat (JOR)



Chinese Taipei

1	Wu H	
7	Shih C	g t ei f f f
8	Tien Y	t f e a g p f 2c g g t t g a
10	Chen Y	a 2 t t f f
14	Yu C	
18	Li H	r r r gr s s r f r r r r r r r r r r r s r r r r r r r r r r g r r s r s
19	Yu C	
23	Chang F	
24	Lien Y	fp f t b f t t g c2 t f p
28	Li Y	
29	Lin C	
36	Chuan H	
66	Lee Y	g pf t p f eg t c f fief t
77	Hsu F	e g2 g t ta f
79	Chang Y	g g f fg f f f f t f f f p g c g t
88	Yang I	c

Denmark

1	Almind S	s r r r s s sssr s s sr r s s s r s s r ss
3	Bang C	g gi g g a f g ei a a a
6	Laursen B	ie b g g f g g
7	Vestergaard	g f g g f g f 2 g g g g g f g g f
8	Nielsen I	t t p g
9	Thestrup L	
10	Larsen F	g fx e g
12	Kaysen I	s r r s r s r s r x r r r f r
14	Waage-Jensen	f c g g
17	Jensen E	x x p x c
18	Nickelsen M	p g t p p t x a a g a x g a a
21	Johansen A	a c2 t a i g t e ta a ggfa e
23	Larsen J	f f g
24	Lund E	c
25	Vinther N	g g i babgbf
28	Lund A	p g t g p g f a a t g g 2c p 2 p

In game	g Goal scored	f Missed shot	a Assist	t Technical faults	b Steal
2 2min suspension	e Earned 7m	c Committed 7m	y Yellow card	r Red Card	k Blue card
i Earned 2min.	x Block	4 4min suspension	p Pass for clear chance	s Saved shot	r Received goal