



24th IHF Women's Junior (U20) World Championship



Group G, 1. round

Match Team Statistics
Match No. 13

Portugal 32 - 18 Guinea
(15 - 8) (17 - 10)

19.6.2024. 11:15
Attendance: 52
Sport Centre Jane Sandanski

Referees: Jacob Pagh (DEN) / Karl Thygesen (DEN)

Portugal

Players		Goals / shots									Attack					Def.			Penalties				TP		
#	Surname and name	S	Tot.	%	9m	6m	Wing	7m	FB	Brk.	LD	As.	PC	E7	E2	TF	St.	C7	Blk	YC	2m	R	B		
1	GUIMARAES Rita																								4:39
2	PICO Maria		1/2	50					1/2				1												33:17
3	JESUS Luana	S	1/1	100			1/1															1			27:43
4	MENDES Barbara																								0:01
5	FERREIRA Sofia		2/4	50	0/1	1/2			1/1						2									1	18:59
7	RIBEIRO Lola		7/8	88			3/4		4/4																29:59
8	SEQUEIRA Constança	S	5/8	63	2/4	1/1		1/1	0/1	1/1		2	2					3							39:32
10	TABUADA Vitoria		1/3	33		1/3								1				2					1		24:27
12	ROSA Matilde	S										1	1												36:05
13	FIGUEIRA Júlia	S	2/3	67			1/1		1/2			2						1							28:32
16	SILVA Mariana											3													16:30
17	SEMEDO Joana	S	3/4	75		1/2				2/2		1			2	5						1			29:43
19	CORREIA Matilde	S											1									1			18:30
25	REBELO Luciana		2/4	50	0/2	1/1				1/1		4	5												30:00
27	SILVA Clémentine		1/2	50						1/2		4	1			2									37:13
81	FIGUEIREDO Carmen	S	7/10	70	3/3				2/4	2/3		1				5	1					2	1		44:50
	Team / bench																								
	UKUPNO		32/49	65	5/10	5/9	5/6	1/1	9/14	7/9	0/0	19	10	1	2	14	1	6	4	0	4	0	0		

Goalkeepers		Saves / shots								
#	Surname and name	Tot.	%	9m	6m	Wing	7m	FB	Brk.	LD
1	GUIMARAES Rita	0/2	0				0/2			
12	ROSA Matilde	7/15	47	5/5	1/2	1/1	0/2	0/1	0/4	
16	SILVA Mariana	4/12	33	2/2	2/5		0/1		0/4	
	TOTAL	11/29	38	7/7	3/7	1/1	0/5	0/1	0/8	0/0

Coach: José António Silva

Number of attacks: 61, Efficiency: 52%, Average Duration: 21.84 seconds

Attack by type of defense

	Shots	9m	6m	Wing	TF	E7	E2
On def. 6-0	17/29	4/9	5/9	1/2	14	1	2
Fastbreak	9/14				0	0	0

Defense by type

	Total	9m	6m	Wing	Stl.	C7	2m
Def. 6-0	11/33	0/15	4/7	0/2	1	6	0
Fastbreak	1/1				0	0	4

Attack with superiority / minority / goalkeeper out

	Attack				Reaction		
	Att.	Eff.	Shots	TF	FB	LD	Tot.
7 on 6 (GK out)	1	100%	1/1	0	0/0	0/0	0/0
6 on 6 (GK out)	3	67%	2/2	1	0/0	0/0	0/0
6 on 5 (GK out)	1	0%	0/1	0	0/0	0/0	0/0
6 on 6	52	54%	28/40	12			
6 on 5	3	33%	1/2	1			
5 on 6	1	0%	0/1	0			

Player superiority / GK out counted at the end of attack (in case it changes during attack)

Defense with superiority / minority / goalkeeper out

	Attack				Reaction		
	Att.	Eff.	Shots	TF	FB	LD	Tot.
6 on 6	53	32%	17/34	19			
5 on 6	2	0%	0/1	1			
6 on 5	6	17%	1/1	5			

Numbers show attacking numbers of opponent. Lower efficiency of opponent means better defense of this team

Jersey number Tot. Total shooting 6m 6m (line) shooting 9m 9m shooting Wng Wing shooting FB Fastbreak sh. 7m 7m penalty sh.
Brk. Breakthrough sh. LD Long distance sh. As. Assists PC Pass clear chance E7 Earned 7m pen. TF Technical faults St. Steals
2m 2m punishments C7. Committed 7m E2 Earned 2m pun. YC. Yellow cards R/B Red/Blue cards Blk. Blocks S Starting Line-up

Handball statistics and livescore by Toma-soft ltd (www.toma-soft.hr)



24th IHF Women's Junior (U20) World Championship



Group G, 1. round

Match Team Statistics

Match No. 13

Portugal 32 - 18 Guinea

(15 - 8) (17 - 10)

19.6.2024. 11:15

Attendance: 52

Sport Centre Jane Sandanski

Referees: Jacob Pagh (DEN) / Karl Thygesen (DEN)

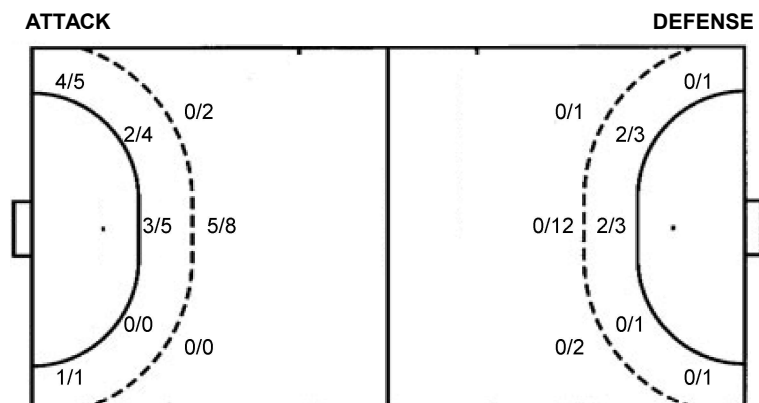
Shot distribution by player

2 M. Pico 1/1 0/1	3 L. Jesus 1/1	4 B. Mendes	5 S. Ferreira 1/1 0/1 1/1 1 post	7 L. Ribeiro 2/2 1/1 1/1 1 miss. 1/1 lob	8 C. Sequeira 1/1 0/1 2/2 1/1 1 block	10 V. Tabuada 1/1 0/1 0/1
13 J. Figueira 1/1 1 miss.	17 J. Semedo 1/1 2/2 1 post	19 M. Correia	25 L. Rebelo 0/1 1/1 0/1 1/1 lob	27 C. Silva 1/1 1 miss.	81 C. Figueiredo 0/1 3/3 1/2 1 miss.	TOTAL 4/4 0/1 10/11 4/5 0/2 1/3 3/3 1/2 7/9 2 post 4 miss. 1 block 2/2 lob

Saves distribution goalkeepers

1 R. Guimaraes 0/1 0/1	12 M. Rosa 0/1 2/2 1/1 2/2 1/6 1/1 0/2	16 M. Silva 0/1 1/1 1/3 1/6	TOTAL 0/1 1/2 2/3 1/1 3/5 2/7 1/1 1/9
-------------------------------------	--	--	--

Shots by position



7m penalties	1/1	7m penalties	5/6
Fastbreak	9/14	Fastbreak	1/1
Breakthrough	7/9	Breakthrough	8/10
Long dist.	0/0	Long dist.	0/0

Shooting statistics

Position	Goals	Sav.	Miss.	Post	Blk.	Total	%
Back (9m)	5	3	0	1	1	10	50
Line (6m)	5	3	0	1	0	9	56
Wing	5	0	1	0	0	6	83
7m penalties	1	0	0	0	0	1	100
Fastbreak	9	3	2	0	0	14	64
Breakthrough	7	1	1	0	0	9	78
Total	32	10	4	2	1	49	65

Jersey number Tot. Total shooting 6m 6m (line) shooting 9m 9m shooting Wng Wing shooting FB Fastbreak sh. 7m 7m penalty sh.
 Brk. Breakthrough sh. LD Long distance sh. As. Assists PC Pass clear chance E7 Earned 7m pen. TF Technical faults St. Steals
 2m 2m punishments C7. Committed 7m E2 Earned 2m pun. YC. Yellow cards R/B Red/Blue cards Blk. Blocks S Starting Line-up

Handball statistics and livescore by Toma-soft ltd (www.toma-soft.hr)



24th IHF Women's Junior (U20) World Championship



Group G, 1. round

Match Team Statistics

Portugal 32 - 18 Guinea

19.6.2024. 11:15

Match No. 13

(15 - 8) (17 - 10)

Attendance: 52

Sport Centre Jane Sandanski

Referees: Jacob Pagh (DEN) / Karl Thygesen (DEN)

Guinea

#	Surname and name	S	Goals / shots								Attack				Def.			Penalties				TP							
			Tot.	%	9m	6m	Wing	7m	FB	Brk.	LD	As.	PC	E7	E2	TF	St.	C7	Blk	YC	2m		R	B					
1	SOUMAH Fatoumata																												14:01
2	BANGOURA Mariama	S	4/10	40	0/5																								51:21
3	SOUMAH Diaraye	S	0/1	0		0/1																							31:04
5	DIALLO Aissatou	S	2/3	67				0/1																					25:21
6	DIASSY Fatoumata Binta		2/2	100		1/1																							24:52
8	SANKHON Kadiatou	S	2/9	22	0/4	0/2																							50:36
10	KONATE Mama	S	0/2	0	0/2																								20:42
12	SOUMAH M'mah		0/1	0	0/1																								24:07
13	CISSE Diakonba		1/1	100		1/1																							13:26
15	SOUMAH Mayelie	S	5/7	71				0/1	5/6																				46:50
16	CONTE M'mahawa																												11:38
18	KABA Aminata																												6:09
22	BANGOURA Mabinty	S																											34:21
23	KEITA Fatoumata																												12:07
26	CAMARA Mariétou																												14:01
30	BANGOURA Aicha		2/5	40	0/3	2/2																							39:24
Team / bench																													
UKUPNO			18/41	44	0/15	4/7	0/2	5/6	1/1	8/10	0/0	4	9	6	4	25	2	1	1	0	2	0	0						

#	Surname and name	Saves / shots								
		Tot.	%	9m	6m	Wing	7m	FB	Brk.	LD
1	SOUMAH Fatoumata	3/10	30	1/2	1/2	0/1		1/3	0/2	
16	CONTE M'mahawa	3/9	33	2/2	1/2	0/2	0/1	0/2		
22	BANGOURA Mabinty	4/23	17	0/4	1/4	0/2		2/7	1/6	
TOTAL		10/42	24	3/8	3/8	0/5	0/1	3/12	1/8	0/0

Coach: Lansana Dinalo Camara

Number of attacks: 61, Efficiency: 30%, Average Duration: 36.90 seconds

Attack by type of defense

	Shots	9m	6m	Wing	TF	E7	E2
On def. 6-0	11/33	0/15	4/7	0/2	25	6	4
Fastbreak	1/1				0	0	0

Defense by type

	Total	9m	6m	Wing	Stl.	C7	2m
Def. 6-0	17/29	4/9	5/9	1/2	2	1	0
Fastbreak	9/14				0	0	2

Attack with superiority / minority / goalkeeper out

	Attack				Reaction		
	Att.	Eff.	Shots	TF	FB	LD	Tot.
6 on 6	53	32%	17/34	19			
5 on 6	2	0%	0/1	1			
6 on 5	6	17%	1/1	5			

Player superiority / GK out counted at the end of attack (in case it changes during attack)

Defense with superiority / minority / goalkeeper out

	Attack				Reaction		
	Att.	Eff.	Shots	TF	FB	LD	Tot.
7 on 6 (GK out)	1	100%	1/1	0	0/0	0/0	0/0
6 on 6 (GK out)	3	67%	2/2	1	0/0	0/0	0/0
6 on 5 (GK out)	1	0%	0/1	0	0/0	0/0	0/0
6 on 6	52	54%	28/40	12			
6 on 5	3	33%	1/2	1			
5 on 6	1	0%	0/1	0			

Numbers show attacking numbers of opponent. Lower efficiency of opponent means better defense of this team

Jersey number Tot. Total shooting 6m 6m (line) shooting 9m 9m shooting Wng Wing shooting FB Fastbreak sh. 7m 7m penalty sh.
 Brk. Breakthrough sh. LD Long distance sh. As. Assists PC Pass clear chance E7 Earned 7m pen. TF Technical faults St. Steals
 2m 2m punishments C7. Committed 7m E2 Earned 2m pun. YC. Yellow cards R/B Red/Blue cards Blk. Blocks S Starting Line-up



24th IHF Women's Junior (U20) World Championship



Group G, 1. round

Match Team Statistics

Match No. 13

Portugal 32 - 18 Guinea

(15 - 8) (17 - 10)

19.6.2024. 11:15

Attendance: 52

Sport Centre Jane Sandanski

Referees: Jacob Pagh (DEN) / Karl Thygesen (DEN)

Shot distribution by player

2 M. Bangoura

1/1		
		1/1
1/2		1/2

1 post 1 miss. 2 block

3 D. Soumah

		0/1

5 A. Diallo

		1/1
		1/1
	0/1	

6 F. Diassy

1/1		1/1

8 K. Sankhon

0/2	0/1	0/2
1/1		1/1

1 post 1 miss.

10 M. Konate

		0/1

1 block

12 M. Soumah

1 miss.

13 D. Cisse

		1/1

15 M. Soumah

1/1		
2/2		2/2

2 miss.

18 A. Kaba

23 F. Keita

26 M. Camara

30 A. Bangoura

0/1		2/2

2 block

TOTAL

1/1		1/2
1/3	0/1	2/5
5/7	0/1	8/9

2 post 5 miss. 5 block

Saves distribution goalkeepers

1 F. Soumah

0/2		0/1
1/3	1/1	
	1/1	0/1

16 M. Conte

0/1		0/1
	1/1	1/1
0/1		1/3

22 M. Bangoura

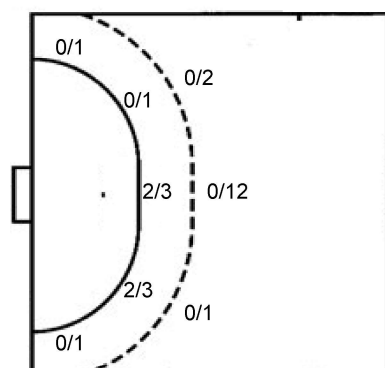
0/1	1/1	1/9
0/2		1/2
0/2	0/1	1/5

TOTAL

0/4	1/1	1/11
1/5	2/2	2/3
0/3	1/2	2/9

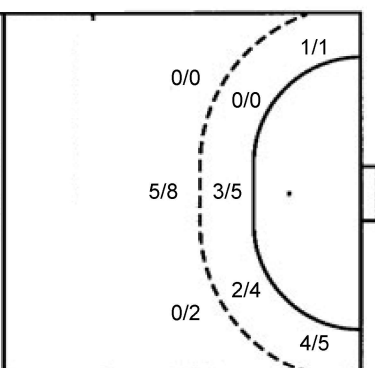
Shots by position

ATTACK



7m penalties 5/6
Fastbreak 1/1
Breakthrough 8/10
Long dist. 0/0

DEFENSE



7m penalties 1/1
Fastbreak 9/14
Breakthrough 7/9
Long dist. 0/0

Shooting statistics

Position	Goals	Sav.	Miss.	Post	Blk.	Total	%
Back (9m)	0	7	2	1	5	15	0
Line (6m)	4	3	0	0	0	7	57
Wing	0	1	1	0	0	2	0
7m penalties	5	0	1	0	0	6	83
Fastbreak	1	0	0	0	0	1	100
Breakthrough	8	0	1	1	0	10	80
Total	18	11	5	2	5	41	44

Jersey number Tot. Total shooting 6m 6m (line) shooting 9m 9m shooting Wng Wing shooting FB Fastbreak sh. 7m 7m penalty sh.
Brk. Breakthrough sh. LD Long distance sh. As. Assists PC Pass clear chance E7 Earned 7m pen. TF Technical faults St. Steals
2m 2m punishments C7. Committed 7m E2 Earned 2m pun. YC. Yellow cards R/B Red/Blue cards Blk. Blocks S Starting Line-up

Handball statistics and livescore by Toma-soft ltd (www.toma-soft.hr)

