



24th IHF Women's Junior (U20) World Championship



Final Round, 5-6. place

Match Team Statistics
Match No. 114

Sweden 25 - 26 Portugal
(16 - 13) (9 - 13)

30.6.2024. 12:15
Attendance: 128
Sport Centre Boris Trajkovski

Referees: Raymel Reyes (CUB) / Alexys Zuniga (CUB)

Sweden

Players		Goals / shots									Attack				Def.			Penalties				TP				
#	Surname and name	S	Tot.	%	9m	6m	Wing	7m	FB	Brk.	LD	As.	PC	E7	E2	TF	St.	C7	Blk	YC	2m	R	B			
5	HOLGERSSON Michelle	S	5/6	83		1/1	2/3		2/2							1									46:15	
6	MIHAILOVIC Emma	S	4/9	44	4/7					0/2		3	1			7	2	1							50:26	
7	JOHANSSON Sophie																								13:38	
8	REHNBERG Madeleine	S	1/5	20			0/2	0/1	1/2													1			29:30	
11	LÖNNEGREN Elise		1/1	100	1/1							1			2										13:15	
12	JOHANSSON Ella																								6:23	
13	GRANAT Felicia	S	3/5	60	1/1	0/1				2/3		2	1		1	5	4		1						41:37	
14	WIKSFORS Stina	S	3/6	50	1/1	2/5						1	1	2	1		2	2	1	1					45:41	
16	WALL Ida																								5:37	
18	VAN KERKVOORDE Isabel		1/3	33	0/2					1/1					2	1									30:07	
19	KYLBERG Thea	S	1/9	11	1/9							4	1					1							30:34	
21	LITTORIN Stina	S										1			1										46:38	
25	WALLIN Moa																								0:34	
28	CANTBY Hilma		3/4	75			1/2	1/1	1/1								1								30:22	
31	LEO Ebba																1								14:19	
32	ÖSTERWALL Elin		3/7	43	1/2				0/1	2/4					1										14:33	
	Team / bench																									
	UKUPNO		25/55	45	9/23	3/7	3/7	1/2	4/6	5/10	0/0	11	7	2	2	19	11	4	2	1	1	0	0			

Goalkeepers		Saves / shots								
#	Surname and name	Tot.	%	9m	6m	Wing	7m	FB	Brk.	LD
12	JOHANSSON Ella	1/6	17	1/4	0/1		0/1			
16	WALL Ida	2/3	67	1/1			0/1		1/1	
21	LITTORIN Stina	7/27	26	5/9	0/6	0/3	0/1	1/2	1/6	
	TOTAL	10/36	28	6/13	1/8	0/3	0/3	1/2	2/7	0/0

Coach: **Jesper Östlund**

Number of attacks: 70, Efficiency: 36%, Average Duration: 23.00 seconds

Attack by type of defense

	Shots	9m	6m	Wing	TF	E7	E2
On def. 6-0	17/39	8/20	1/4	3/7	17	2	2
On def. 5-1	1/6	0/2	1/2	0/0	2	0	0
Fastbreak	4/6				0	0	0

Defense by type

	Total	9m	6m	Wing	Stl.	C7	2m
Def. 6-0	21/39	6/16	7/9	3/5	10	4	0
Def. press.	0/2	0/0	0/0	0/0	1	0	0
Fastbreak	1/3				0	0	1

Attack with superiority / minority / goalkeeper out

	Attack				Reaction		
	Att.	Eff.	Shots	TF	FB	LD	Tot.
7 on 6 (GK out)	5	20%	1/3	2	0/0	0/0	0/0
6 on 6 (GK out)	1	0%	0/1	0	0/0	0/0	0/0
6 on 6	59	37%	22/42	17			
6 on 5	5	40%	2/5	0			

Player superiority / GK out counted at the end of attack (in case it changes during attack)

Defense with superiority / minority / goalkeeper out

	Attack				Reaction		
	Att.	Eff.	Shots	TF	FB	LD	Tot.
7 on 6 (GK out)	4	50%	2/3	1	0/0	0/0	0/0
6 on 6 (GK out)	1	0%	0/0	1	0/0	0/0	0/0
6 on 6	61	36%	22/39	22			
5 on 6	2	0%	0/2	0			
6 on 5	2	100%	2/2	0			

Numbers show attacking numbers of opponent. Lower efficiency of opponent means better defense of this team

Jersey number Tot. Total shooting 6m 6m (line) shooting 9m 9m shooting Wng Wing shooting FB Fastbreak sh. 7m 7m penalty sh.
Brk. Breakthrough sh. LD Long distance sh. As. Assists PC Pass clear chance E7 Earned 7m pen. TF Technical faults St. Steals
2m 2m punishments C7. Committed 7m E2 Earned 2m pun. YC. Yellow cards R/B Red/Blue cards Blk. Blocks S Starting Line-up

Handball statistics and livescore by Toma-soft ltd (www.toma-soft.hr)



24th IHF Women's Junior (U20) World Championship



Final Round, 5-6. place

Match Team Statistics

Match No. 114

Sweden 25 - 26 Portugal

(16 - 13) (9 - 13)

30.6.2024. 12:15

Attendance: 128

Sport Centre Boris Trajkovski

Referees: Raymel Reyes (CUB) / Alexys Zuniga (CUB)

Shot distribution by player

5 M. Holgersson

1/1		3/3
		1/1

0/1 lob

6 E. Mihailovic

3/3		1/2
0/1		
		0/2

1 block

7 S. Johansson

8 M. Rehnberg

	0/1	
	0/1	
1/1		

1 post 1 miss.

11 E. Lönnegren

1/1		

13 F. Granat

1/1		
		0/1
		2/2

1 miss.

14 S. Wiksfors

		2/2
1/1		

1 post 2 miss.

18 I. Van Kerkvoorde

1/1		0/1

1 block

19 T. Kylberg

1/1		0/1
0/1		
		0/2

3 post 1 miss.

25 M. Wallin

28 H. Cantby

		1/1
1/1		1/1

1 post

31 E. Leo

32 E. Österwall

		1/1
0/1		
		1/1

3 post 1/1 lob

TOTAL

6/6	0/1	5/7
1/4	0/1	4/6
4/4		4/8

9 post 5 miss. 2 block 1/2 lob

Saves distribution goalkeepers

12 E. Johansson

		1/1
0/2		0/1
		0/2

16 I. Wall

		1/1
1/2		

21 S. Littorin

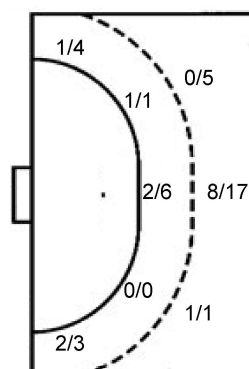
0/4	1/1	1/7
2/2	1/1	1/4
1/6		0/1

TOTAL

0/4	1/1	3/9
3/6	1/1	1/5
1/6		0/3

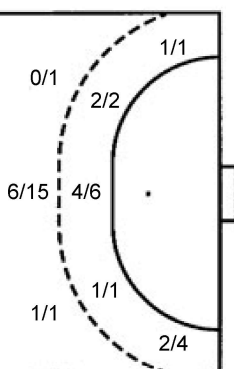
Shots by position

ATTACK



7m penalties 1/2
Fastbreak 4/6
Breakthrough 5/10
Long dist. 0/0

DEFENSE



7m penalties 3/3
Fastbreak 1/3
Breakthrough 5/11
Long dist. 0/0

Shooting statistics

Position	Goals	Sav.	Miss.	Post	Blk.	Total	%
Back (9m)	9	8	1	3	2	23	39
Line (6m)	3	0	3	1	0	7	43
Wing	3	2	0	2	0	7	43
7m penalties	1	0	1	0	0	2	50
Fastbreak	4	1	0	1	0	6	67
Breakthrough	5	3	0	2	0	10	50
Total	25	14	5	9	2	55	45

Jersey number Tot. Total shooting 6m 6m (line) shooting 9m 9m shooting Wng Wing shooting FB Fastbreak sh. 7m 7m penalty sh.
Brk. Breakthrough sh. LD Long distance sh. As. Assists PC Pass clear chance E7 Earned 7m pen. TF Technical faults St. Steals
2m 2m punishments C7. Committed 7m E2 Earned 2m pun. YC. Yellow cards R/B Red/Blue cards Blk. Blocks S Starting Line-up

Handball statistics and livescore by Toma-soft ltd (www.toma-soft.hr)



24th IHF Women's Junior (U20) World Championship



Final Round, 5-6. place

Match Team Statistics

Sweden 25 - 26 Portugal

30.6.2024. 12:15

Match No. 114

(16 - 13) (9 - 13)

Attendance: 128

Sport Centre Boris Trajkovski

Referees: Raymel Reyes (CUB) / Alexys Zuniga (CUB)

Portugal

Players		Goals / shots									Attack					Def.			Penalties			TP			
#	Surname and name	S	Tot.	%	9m	6m	Wing	7m	FB	Brk.	LD	As.	PC	E7	E2	TF	St.	C7	Blk	YC	2m	R	B		
1	GUIMARAES Rita																								5:14
2	PICO Maria														1										21:46
3	JESUS Luana	S	1/1	100			1/1								1				1						36:23
4	MENDES Barbara		1/1	100				1/1																	0:21
5	FERREIRA Sofia	S	2/3	67		2/3									2		2						1		26:07
7	RIBEIRO Lola	S	2/2	100			1/1		1/1					1				1							30:05
8	SEQUEIRA Constança	S	8/14	57	4/8			2/2		2/4		3	2				5	1							48:41
10	TABUADA Vitoria																								5:34
12	ROSA Matilde	S										1													54:01
13	FIGUEIRA Júlia		2/4	50		1/1	1/3										1								28:06
16	SILVA Mariana																								0:11
17	SEMEDO Joana		3/4	75						3/4		2	1				4	1							39:01
19	CORREIA Matilde		4/5	80		4/5												1					1		11:58
25	REBELO Luciana	S	3/4	75	3/4												9								32:16
27	SILVA Clémentine		0/4	0	0/2					0/2		4	1				1	2							32:40
81	FIGUEIREDO Carmen	S	0/6	0	0/3				0/2	0/1							2	2					2		44:19
	Team / bench																								
	UKUPNO		26/48	54	7/17	7/9	3/5	3/3	1/3	5/11	0/0	10	5	3	1	24	7	2	2	0	2	0	0		

Goalkeepers		Saves / shots								
#	Surname and name	Tot.	%	9m	6m	Wing	7m	FB	Brk.	LD
1	GUIMARAES Rita	0/4	0	0/3					0/1	
12	ROSA Matilde	14/34	41	8/14	0/3	2/5		1/5	3/7	
16	SILVA Mariana	0/1	0				0/1			
	TOTAL	14/39	36	8/17	0/3	2/5	0/1	2/5	3/8	0/0

Coach: José António Silva

Number of attacks: 70, Efficiency: 37%, Average Duration: 27.79 seconds

Attack by type of defense

	Shots	9m	6m	Wing	TF	E7	E2
On def. 6-0	21/39	6/16	7/9	3/5	21	3	1
On def. press.	0/2	0/0	0/0	0/0	3	0	0
Fastbreak	1/3				0	0	0

Defense by type

	Total	9m	6m	Wing	Stl.	C7	2m
Def. 6-0	17/39	8/20	1/4	3/7	6	2	0
Def. 5-1	1/6	0/2	1/2	0/0	1	0	0
Fastbreak	4/6				0	0	2

Attack with superiority / minority / goalkeeper out

	Attack				Reaction		
	Att.	Eff.	Shots	TF	FB	LD	Tot.
7 on 6 (GK out)	4	50%	2/3	1	0/0	0/0	0/0
6 on 6 (GK out)	1	0%	0/0	1	0/0	0/0	0/0
6 on 6	61	36%	22/39	22			
5 on 6	2	0%	0/2	0			
6 on 5	2	100%	2/2	0			

Player superiority / GK out counted at the end of attack (in case it changes during attack)

Defense with superiority / minority / goalkeeper out

	Attack				Reaction		
	Att.	Eff.	Shots	TF	FB	LD	Tot.
7 on 6 (GK out)	5	20%	1/3	2	0/0	0/0	0/0
6 on 6 (GK out)	1	0%	0/1	0	0/0	0/0	0/0
6 on 6	59	37%	22/42	17			
6 on 5	5	40%	2/5	0			

Numbers show attacking numbers of opponent. Lower efficiency of opponent means better defense of this team

Jersey number Tot. Total shooting 6m 6m (line) shooting 9m 9m shooting Wng Wing shooting FB Fastbreak sh. 7m 7m penalty sh.
 Brk. Breakthrough sh. LD Long distance sh. As. Assists PC Pass clear chance E7 Earned 7m pen. TF Technical faults St. Steals
 2m 2m punishments C7. Committed 7m E2 Earned 2m pun. YC. Yellow cards R/B Red/Blue cards Blk. Blocks S Starting Line-up



24th IHF Women's Junior (U20) World Championship



Final Round, 5-6. place

Match Team Statistics

Match No. 114

Sweden 25 - 26 Portugal

(16 - 13) (9 - 13)

30.6.2024. 12:15

Attendance: 128

Sport Centre Boris Trajkovski

Referees: Raymel Reyes (CUB) / Alexys Zuniga (CUB)

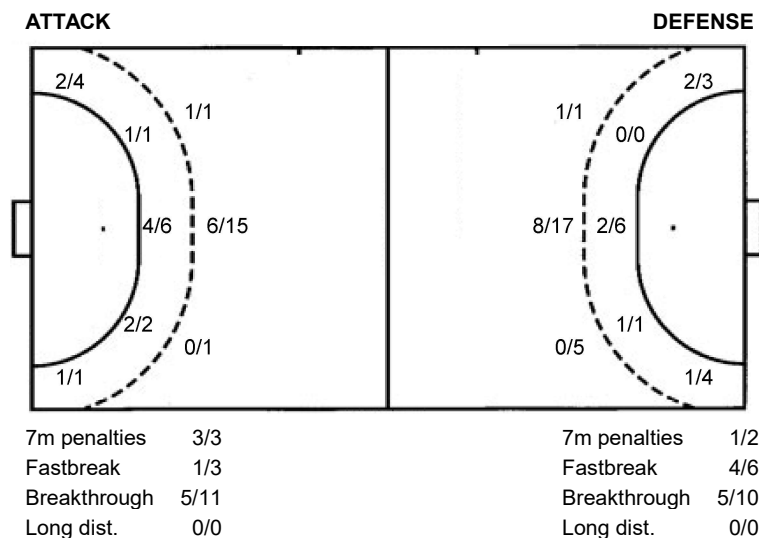
Shot distribution by player

2 M. Pico [] [] [] [] [] [] [] [] []	3 L. Jesus [] [] [] [] [] [] [] [] [] 1/1 lob	4 B. Mendes [] [] [] [] [] [] [] [] [] 1/1	5 S. Ferreira 1/1 [] [] 1/2 [] [] [] [] []	7 L. Ribeiro 1/1 [] [] [] [] [] 1/1 [] []	8 C. Sequeira 1/1 [] 1/2 1/2 [] 3/3 1/2 [] 1/1 1 miss. 2 block	10 V. Tabuada [] [] [] [] [] [] [] [] []
13 J. Figueira [] [] 2/2 [] [] [] [] [] [] 1 post 1 miss.	17 J. Semedo [] [] 1/2 [] [] [] 2/2 [] []	19 M. Correia 1/1 [] 2/2 [] [] [] [] [] 1/1 1 post	25 L. Rebelo [] [] 0/1 1/1 [] 1/1 [] [] 1/1	27 C. Silva [] [] [] [] [] [] [] [] [] 2 post 2 miss.	81 C. Figueiredo [] 0/1 [] 0/1 0/1 0/1 [] [] [] 2 post	TOTAL 4/4 0/1 6/9 3/6 0/1 4/5 5/6 [] 3/3 6 post 4 miss. 2 block 1/1 lob

Saves distribution goalkeepers

1 R. Guimaraes 0/1 [] 0/1 [] [] [] 0/1 [] []	12 M. Rosa 0/5 1/1 2/6 3/4 1/1 2/6 0/2 [] 4/8	16 M. Silva [] [] [] [] [] [] 0/1 [] []	TOTAL 0/6 1/1 2/7 3/4 1/1 2/6 0/4 [] 4/8
--	--	---	---

Shots by position



Shooting statistics

Position	Goals	Sav.	Miss.	Post	Blk.	Total	%
Back (9m)	7	6	1	1	2	17	41
Line (6m)	7	1	0	1	0	9	78
Wing	3	0	1	1	0	5	60
7m penalties	3	0	0	0	0	3	100
Fastbreak	1	1	0	1	0	3	33
Breakthrough	5	2	2	2	0	11	45
Total	26	10	4	6	2	48	54

Jersey number Tot. Total shooting 6m 6m (line) shooting 9m 9m shooting Wng Wing shooting FB Fastbreak sh. 7m 7m penalty sh.
 Brk. Breakthrough sh. LD Long distance sh. As. Assists PC Pass clear chance E7 Earned 7m pen. TF Technical faults St. Steals
 2m 2m punishments C7. Committed 7m E2 Earned 2m pun. YC. Yellow cards R/B Red/Blue cards Blk. Blocks S Starting Line-up



24th IHF Women's Junior (U20) World Championship



Final Round, 5-6. place

Match Team Statistics

Match No. 114

Sweden 25 - 26 Portugal

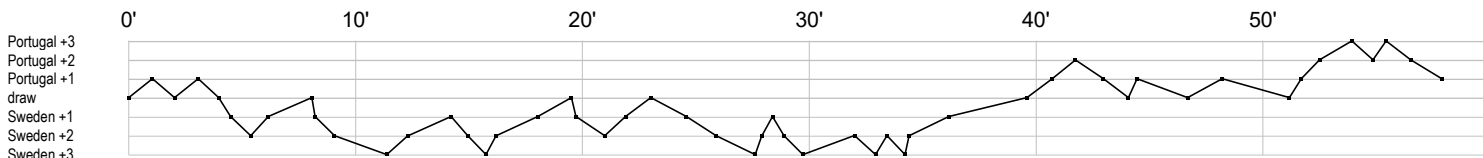
(16 - 13) (9 - 13)

30.6.2024. 12:15

Attendance: 128

Sport Centre Boris Trajkovski

Referees: Raymel Reyes (CUB) / Alexys Zuniga (CUB)



Sweden

5	Holgersonn M	g	g	g	t	g				g					f																					
6	Mihailovic S	g	c	ba	t	pg	t	t			ft	a	g	f	g	t	f	a			t		tb	f				f								
7	Johansson E																																			
8	Rehnberg M					f								f	g	f	f	2																		
11	Lönnegren E										t	g																	p	t						
12	Johansson E	r																						r	s	r	r	r								
13	Granat F	g		a				t		t		b	b				f							t	a	bg	t	xg	t				bip	f		
14	Wiksfors S	yc		a	f	fb			b	p								g	x		ei									g	f		gc	e		
16	Wall I																																s	r	s	
18	Van	f					t		t		g								bp																f	
19	Kylberg T			p	f	g	f	a											f	f	f	c				f	f	a				a	a	f		
21	Littorin S	r			r	s	r			s	r	r	r	s	r	r			s	r	r	s		r	r	ar	tr		r		r	r	s			
25	Wallin M																																			
28	Cantby H											g	b																						g	g
31	Leo E																							b												
32	Österwall E						g		f	g		t	f	g													f								f	

Portugal

1	Guimaraes R							r	r	r	r																												
2	Pico M																								i														
3	Jesus L	e										g																								c			
4	Mendes B	g																																					
5	Ferreira S	e					g																											t	g	f	e	2	t
7	Ribeiro L						gb	p			g																												
8	Sequeira C	g	t	g	a	t			g	g	b	g		t	f		f	t		fg				a	g		t	f	p	a	p	g	ff						
10	Tabuada V																																						
12	Rosa M	r	s	r	r		r	a	r	s	r	s	r					s	s	r	r	s	s			r	r	r	s	s	r		r	s	r	s	s		
13	Figueira J																	g		f		g						ft											
16	Silva M																																				f		
17	Semedo J							t	g		f							a	t	a	p	t	g	b	t	g													
19	Correia M									f			gg		g	g	c	2																					
25	Rebelo L	t	t	t	t	t				t	t																g	f					g	g	t	t			
27	Silva C										f	a	a	p	a	f	b	a	f	tb					f														
81	Figueiredo C	t		f		t	bf	f			f	f								x								f	b					x					

In game	g Goal scored	f Missed shot	a Assist	t Technical faults	b Steal
2 2min suspension	e Earned 7m	c Committed 7m	y Yellow card	r Red Card	k Blue card
i Earned 2min.	x Block	4 4min suspension	p Pass for clear chance	s Saved shot	r Received goal