



24th IHF Women's Junior (U20) World Championship



Group E, 1. round

Match Team Statistics

Czech Republic 23 - 17 Algeria

19.6.2024. 13:30

Match No. 10

(12 - 11) (11 - 6)

Attendance: 56

Sport Centre Jane Sandanski

Referees: Tatjana Prastalo (BIH) / Vesna Balvan (BIH)

Czech Republic

#	Surname and name	S	Goals / shots								Attack					Def.			Penalties				TP						
			Tot.	%	9m	6m	Wing	7m	FB	Brk.	LD	As.	PC	E7	E2	TF	St.	C7	Blk	YC	2m	R		B					
4	KUBALKOVÁ Anna		3/4	75		0/1				2/2	1/1					1	1	1	2	5					1				30:15
5	GABRHELOVÁ Veronika	S	2/3	67	2/3										1	3		2			1								25:22
8	SIMKOVA Daniela	S	1/2	50	0/1						1/1				4	2			1			1							28:56
9	SCHREIBMEIEROVÁ Simona		4/6	67	2/4					2/2					1														23:44
10	SKÁCELOVÁ Marcela		1/2	50				0/1		1/1																			11:39
11	BRABCOVA Adéla																							1					6:02
13	PEJŠOVÁ Karolína		0/2	0	0/1	0/1													1			1							24:16
15	JESTŘIBKOVÁ Anna	S	3/3	100		3/3								1					1			1							32:52
16	STOJAROVÁ Kristýna																												38:38
18	PANOŠKOVÁ Tereza		0/3	0					0/2	0/1																			19:53
19	VÁVROVÁ Veronika	S	1/1	100	1/1									1	2			1				1							38:56
20	KAPUSNIAKOVÁ Šárka	S	2/5	40				0/3		2/2					1	2	3	1											40:07
22	KRAUTEROVÁ Tereza		0/1	0	0/1									1		1								1					9:47
24	BEHENSKA Sofie	S	4/7	57	0/1			2/3		2/3																			48:03
25	ŘADOVÁ Eliška		2/7	29	1/5						1/2			2				1				1							21:46
27	WIZUROVA Patricie	S												2															19:44
	Team / bench																							1					
	UKUPNO		23/46	50	6/17	3/5	2/9	2/2	7/9	3/4	0/0			9	12	2	6	10	6	1	5	2	2	0	0				

#	Surname and name	Saves / shots								
		Tot.	%	9m	6m	Wing	7m	FB	Brk.	LD
16	STOJAROVÁ Kristýna	7/16	44	5/10	1/3	1/2	0/1			
27	WIZUROVA Patricie	1/9	11	1/5	0/2				0/2	
	TOTAL	8/25	32	6/15	1/5	1/2	0/1	0/0	0/2	0/0

Coach: Dušan Poloz

Number of attacks: 52, Efficiency: 44%, Average Duration: 26.75 seconds

Attack by type of defense

	Shots	9m	6m	Wing	TF	E7	E2
On def. 6-0	14/34	6/17	3/5	2/8	10	2	6
Fastbreak	7/9				0	0	0

Defense by type

	Total	9m	6m	Wing	Stl.	C7	2m
Def. 6-0	10/14	5/9	3/3	0/0	1	1	0
Def. 5-1	6/15	4/11	1/2	1/2	5	0	0
Fastbreak	0/0				0	0	2

Attack with superiority / minority / goalkeeper out

	Attack				Reaction		
	Att.	Eff.	Shots	TF	FB	LD	Tot.
6 on 6 (GK out)	3	33%	1/3	0	0/0	0/0	0/0
6 on 6	43	42%	18/33	10			
6 on 5	6	67%	4/6	0			

Player superiority / GK out counted at the end of attack (in case it changes during attack)

Defense with superiority / minority / goalkeeper out

	Attack				Reaction		
	Att.	Eff.	Shots	TF	FB	LD	Tot.
6 on 6 (GK out)	1	0%	0/0	1	1/1	0/0	1/1
6 on 6	42	38%	16/22	20			
5 on 6	3	0%	0/2	1			
6 on 5	3	33%	1/2	1			
5 on 5	1	0%	0/0	1			

Numbers show attacking numbers of opponent. Lower efficiency of opponent means better defense of this team

Jersey number Tot. Total shooting 6m 6m (line) shooting 9m 9m shooting Wng Wing shooting FB Fastbreak sh. 7m 7m penalty sh.
 Brk. Breakthrough sh. LD Long distance sh. As. Assists PC Pass clear chance E7 Earned 7m pen. TF Technical faults St. Steals
 2m 2m punishments C7. Committed 7m E2 Earned 2m pun. YC. Yellow cards R/B Red/Blue cards Blk. Blocks S Starting Line-up



24th IHF Women's Junior (U20) World Championship



Group E, 1. round

Match Team Statistics

Match No. 10

Czech Republic 23 - 17 Algeria

(12 - 11) (11 - 6)

19.6.2024. 13:30

Attendance: 56

Sport Centre Jane Sandanski

Referees: Tatjana Prastalo (BIH) / Vesna Balvan (BIH)

Shot distribution by player

4 A. Kubáľková

0/1		1/1
		1/1
1/1		

5 V. Gabrhelová

1/1		1/2

8 D. Šímková

		0/1
		1/1

9 S. Schreibmeierová

		0/1
2/2		2/2

1 post

10 M. Skácelová

1/1		
0/1		

11 A. Brabcová

13 K. Pejšová

2 post

15 A. Jestřibková

1/1	2/2	

18 T. Panošková

0/1		0/1

1 miss.

19 V. Vávrová

		1/1

20 Š. Kapusniaková

0/1		
1/2		
1/1		

1 post

22 T. Kráuterová

	0/1	

24 S. Behenská

0/1		
1/1		
2/2		1/1

2 miss.

25 E. Řádová

1/1		
1/1		

2 post 2 miss. 1 block

TOTAL

1/4		2/3
3/6	0/1	1/3
9/9	2/2	5/6

6 post 5 miss. 1 block

Saves distribution goalkeepers

16 K. Stojarová

1/3	1/1	1/2
0/1	1/2	1/1
	1/1	1/4

27 P. Wizurová

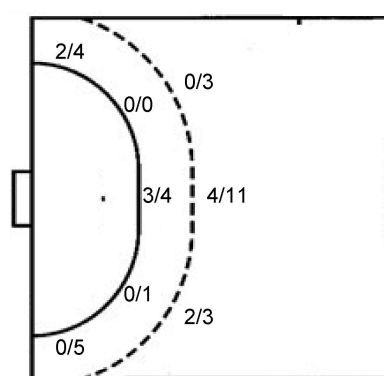
0/1		
0/1	1/1	0/1
0/2	0/1	0/2

TOTAL

1/4	1/1	1/2
0/2	2/3	1/2
0/2	1/2	1/6

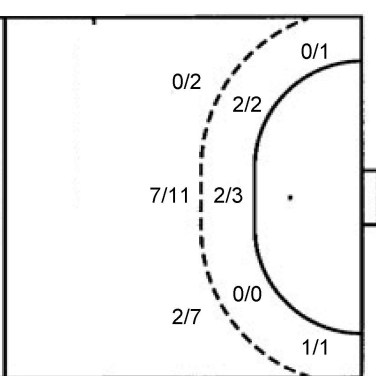
Shots by position

ATTACK



7m penalties	2/2
Fastbreak	7/9
Breakthrough	3/4
Long dist.	0/0

DEFENSE



7m penalties	1/1
Fastbreak	0/0
Breakthrough	2/2
Long dist.	0/0

Shooting statistics

Position	Goals	Sav.	Miss.	Post	Blk.	Total	%
Back (9m)	6	5	1	4	1	17	35
Line (6m)	3	1	0	1	0	5	60
Wing	2	5	1	1	0	9	22
7m penalties	2	0	0	0	0	2	100
Fastbreak	7	0	2	0	0	9	78
Breakthrough	3	0	1	0	0	4	75
Total	23	11	5	6	1	46	50

Jersey number Tot. Total shooting 6m 6m (line) shooting 9m 9m shooting Wng Wing shooting FB Fastbreak sh. 7m 7m penalty sh.
 Brk. Breakthrough sh. LD Long distance sh. As. Assists PC Pass clear chance E7 Earned 7m pen. TF Technical faults St. Steals
 2m 2m punishments C7. Committed 7m E2 Earned 2m pun. YC. Yellow cards R/B Red/Blue cards Blk. Blocks S Starting Line-up

Handball statistics and livescore by Toma-soft ltd (www.toma-soft.hr)



24th IHF Women's Junior (U20) World Championship



Group E, 1. round

Match Team Statistics

Match No. 10

Czech Republic 23 - 17 Algeria

(12 - 11) (11 - 6)

19.6.2024. 13:30

Attendance: 56

Sport Centre Jane Sandanski

Referees: Tatjana Prastalo (BIH) / Vesna Balvan (BIH)

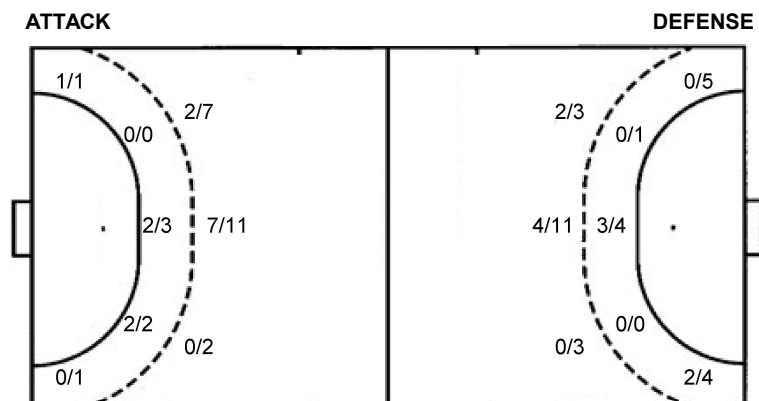
Shot distribution by player

5 F. Imane	6 S. Azzi	8 O. Kenza	10 H. Makdoud	11 M. Fettani	15 S. Naceur	17 M. Chebli
				1/1 0/1		0/1 1/1
				2/2		0/1
				1/1 2/3		
				2 block		
20 Z. Meriem	21 S. Atmani	22 L. Yelles	27 L. Berkani	77 I. Aissa	99 W. Radja	TOTAL
	1/1 0/1			1/1		3/4 0/1 1/2
	0/1	1/2		1/1		2/2 1/3 1/2
	2/2 0/1	3/3				2/2 1/2 5/6
	2 block	1/1 lob		1 block		5 block 1/1 lob

Saves distribution goalkeepers

16 Z. Haddad	31 H. Bakkar	33 O. Salah	TOTAL
3/4 1/3			3/4 1/3
3/6 1/1 2/3			3/6 1/1 2/3
0/8 0/2 1/5	0/1		0/9 0/2 1/5

Shots by position



7m penalties	1/1	7m penalties	2/2
Fastbreak	0/0	Fastbreak	7/9
Breakthrough	2/2	Breakthrough	3/4
Long dist.	0/0	Long dist.	0/0

Shooting statistics

Position	Goals	Sav.	Miss.	Post	Blk.	Total	%
Back (9m)	9	6	0	0	5	20	45
Line (6m)	4	1	0	0	0	5	80
Wing	1	1	0	0	0	2	50
7m penalties	1	0	0	0	0	1	100
Fastbreak	0	0	0	0	0	0	0
Breakthrough	2	0	0	0	0	2	100
Total	17	8	0	0	5	30	57

Jersey number Tot. Total shooting 6m 6m (line) shooting 9m 9m shooting Wng Wing shooting FB Fastbreak sh. 7m 7m penalty sh.
 Brk. Breakthrough sh. LD Long distance sh. As. Assists PC Pass clear chance E7 Earned 7m pen. TF Technical faults St. Steals
 2m 2m punishments C7. Committed 7m E2 Earned 2m pun. YC. Yellow cards R/B Red/Blue cards Blk. Blocks S Starting Line-up

Handball statistics and livescore by Toma-soft ltd (www.toma-soft.hr)

