



24th IHF Women's Junior (U20) World Championship



Group E, 1. round

Match Team Statistics

Sweden 38 - 24 China

19.6.2024. 15:45

Match No. 9

(19 - 13) (19 - 11)

Attendance: 75

Sport Centre Jane Sandanski

Referees: Mohammed Jassim Al Saqer (KSA) / Ali Mohammed Al Suqufi (KSA)

Sweden

Players		Goals / shots									Attack				Def.		Penalties			TP						
#	Surname and name	S	Tot.	%	9m	6m	Wing	7m	FB	Brk.	LD	As.	PC	E7	E2	TF	St.	C7	Bik		YC	2m	R	B		
5	HOLGERSSON Michelle		2/2	100			1/1		1/1							2	1								24:37	
6	MIHAILOVIC Emma	S	5/6	83	3/4					2/2		4	1		1	2	1								25:43	
7	JOHANSSON Sophie	S	2/2	100		1/1	1/1									2									34:48	
8	REHNBERG Madeleine		3/5	60			2/4		1/1						1		1								20:33	
11	LÖNNEGREN Elise												2			2	1	1				1			32:02	
12	JOHANSSON Ella																								19:32	
13	GRANAT Felicia	S										2	1						3						36:07	
14	WIKSFORS Stina	S	5/5	100	1/1	4/4						2		1		1	1		2						42:06	
16	WALL Ida																								7:04	
18	VAN KERKVOORDE Isabel	S	3/4	75						3/4		2	1			2	1	1			1				29:58	
19	KYLBERG Thea		6/9	67	4/7					1/1	1/1	6	3			2	1	1			1	1			39:00	
21	LITTORIN Stina											1													28:31	
25	WALLIN Moa	S	1/3	33		1/1		0/1		0/1		2				1		2							10:37	
28	CANTBY Hilma	S	5/6	83		1/1	1/2	1/1	2/2								1								40:46	
31	LEO Ebba		4/5	80		4/5								1			1								18:34	
32	ÖSTERWALL Elin		2/3	67	2/3								2												10:02	
	Team / bench																									
	UKUPNO		38/50	76	10/15	11/12	5/8	1/2	4/4	6/8	1/1	19	10	2	2	14	9	5	5	1	3	0	0			

Goalkeepers		Saves / shots								
#	Surname and name	Tot.	%	9m	6m	Wing	7m	FB	Brk.	LD
12	JOHANSSON Ella	2/11	18	1/6	1/2	0/1	0/1			0/1
16	WALL Ida	1/5	20	0/2			1/3			
21	LITTORIN Stina	6/17	35	4/5	1/4	0/2	0/1	0/1	1/4	
	TOTAL	9/33	27	5/13	2/6	0/3	1/5	0/1	1/4	0/1

Coach: Jesper Östlund

Number of attacks: 62, Efficiency: 61%, Average Duration: 22.08 seconds

Attack by type of defense

	Shots	9m	6m	Wing	TF	E7	E2
On def. 6-0	32/43	10/15	11/12	5/8	14	2	2
Fastbreak	4/4				0	0	0

Defense by type

	Total	9m	6m	Wing	Stl.	C7	2m
Def. 6-0	16/36	7/22	3/5	3/4	9	5	0
Def. 5-1	1/1	1/1	0/0	0/0	0	0	0
Fastbreak	1/1				0	0	3

Attack with superiority / minority / goalkeeper out

	Attack				Reaction		
	Att.	Eff.	Shots	TF	FB	LD	Tot.
7 on 6 (GK out)	1	100%	1/1	0	0/0	0/0	0/0
6 on 6 (GK out)	4	75%	3/3	1	0/0	1/1	1/1
5 on 6 (GK out)	1	0%	0/0	1	0/0	0/0	0/0
6 on 6	52	60%	31/40	12			
6 on 5	4	75%	3/4	0			

Player superiority / GK out counted at the end of attack (in case it changes during attack)

Defense with superiority / minority / goalkeeper out

	Attack				Reaction		
	Att.	Eff.	Shots	TF	FB	LD	Tot.
7 on 6 (GK out)	1	0%	0/0	1	0/0	0/0	0/0
6 on 6 (GK out)	1	0%	0/0	1	0/0	1/1	1/1
6 on 6	50	36%	18/33	17			
5 on 6	3	33%	1/2	1			
6 on 5	5	80%	4/4	1			
6 on 4	1	100%	1/1	0			

Numbers show attacking numbers of opponent. Lower efficiency of opponent means better defense of this team

Jersey number Tot. Total shooting 6m 6m (line) shooting 9m 9m shooting Wng Wing shooting FB Fastbreak sh. 7m 7m penalty sh.
 Brk. Breakthrough sh. LD Long distance sh. As. Assists PC Pass clear chance E7 Earned 7m pen. TF Technical faults St. Steals
 2m 2m punishments C7. Committed 7m E2 Earned 2m pun. YC. Yellow cards R/B Red/Blue cards Blk. Blocks S Starting Line-up

Handball statistics and livescore by Toma-soft ltd (www.toma-soft.hr)



24th IHF Women's Junior (U20) World Championship



Group E, 1. round

Match Team Statistics

Match No. 9

Sweden 38 - 24 China

(19 - 13) (19 - 11)

19.6.2024. 15:45

Attendance: 75

Sport Centre Jane Sandanski

Referees: Mohammed Jassim Al Saqer (KSA) / Ali Mohammed Al Suqufi (KSA)

Shot distribution by player

5 M. Holgersson

1/1		

1/1 lob

6 E. Mihailovic

1/1		
	1/1	2/2

1 post 1/1 lob

7 S. Johansson

		1/1
	1/1	

8 M. Rehnberg

2/2		
		1/1

1 post 1 miss.

11 E. Lönnegren

13 F. Granat

14 S. Wiksfors

	2/2	
1/1		1/1

1/1 lob

18 I. Van Kerkvoorde

		1/1
		2/2

1 miss.

19 T. Kylberg

2/2		
2/2	1/1	0/2
1/1		

1 post

25 M. Wallin

1/1		
		0/1

1 post

28 H. Cantby

	1/2	2/2
1/1		
		1/1

31 E. Leo

1/1	0/1	1/1
		1/1
1/1		

32 E. Österwall

1/1		
		1/1

1 miss.

TOTAL

8/8	3/5	5/5
3/3	2/2	3/6
4/4	1/1	6/6

4 post 3 miss. 3/3 lob

Saves distribution goalkeepers

12 E. Johansson

0/2		
0/1		1/7

16 I. Wall

0/1		0/1
1/1		0/1
0/1		

21 S. Littorin

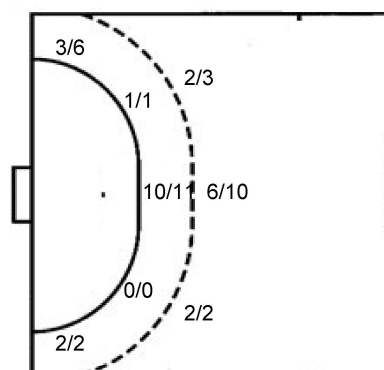
0/1		0/1
1/3	3/4	1/2

TOTAL

0/4		0/2
1/1		0/1
1/5	3/4	2/9

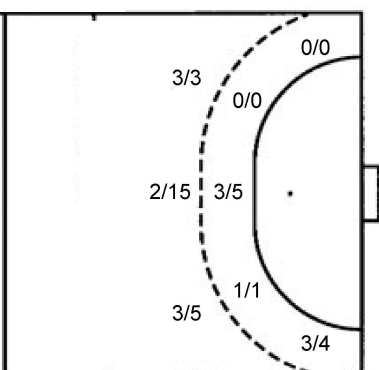
Shots by position

ATTACK



7m penalties	1/2
Fastbreak	4/4
Breakthrough	6/8
Long dist.	1/1

DEFENSE



7m penalties	4/5
Fastbreak	1/1
Breakthrough	3/5
Long dist.	1/1

Shooting statistics

Position	Goals	Sav.	Miss.	Post	Blk.	Total	%
Back (9m)	10	2	1	2	0	15	67
Line (6m)	11	1	0	0	0	12	92
Wing	5	1	1	1	0	8	63
7m penalties	1	1	0	0	0	2	50
Fastbreak	4	0	0	0	0	4	100
Breakthrough	6	0	1	1	0	8	75
Total	37	5	3	4	0	49	76

Jersey number Tot. Total shooting 6m 6m (line) shooting 9m 9m shooting Wng Wing shooting FB Fastbreak sh. 7m 7m penalty sh.
 Brk. Breakthrough sh. LD Long distance sh. As. Assists PC Pass clear chance E7 Earned 7m pen. TF Technical faults St. Steals
 2m 2m punishments C7. Committed 7m E2 Earned 2m pun. YC. Yellow cards R/B Red/Blue cards Blk. Blocks S Starting Line-up

Handball statistics and livescore by Toma-soft ltd (www.toma-soft.hr)



24th IHF Women's Junior (U20) World Championship



Group E, 1. round

Match Team Statistics

Sweden 38 - 24 China

19.6.2024. 15:45

Match No. 9

(19 - 13) (19 - 11)

Attendance: 75

Sport Centre Jane Sandanski

Referees: Mohammed Jassim Al Saqer (KSA) / Ali Mohammed Al Suqfi (KSA)

China

Players		Goals / shots									Attack					Def.			Penalties				TP		
#	Surname and name	S	Tot.	%	9m	6m	Wing	7m	FB	Brk.	LD	As.	PC	E7	E2	TF	St.	C7	Blk	YC	2m	R	B		
1	SUN Yihan																								13:16
3	PAN Fengying	S	1/1	100	1/1											4									32:06
5	ZHUO Ziyi		3/4	75	1/2			2/2						1		1									18:30
6	LIU Ziran		1/4	25	1/4												1								10:47
7	ZHANG Siyu																1						1		24:50
8	LIANG Jing		0/5	0	0/5									1	1	3									21:27
10	SHI Zihan	S	2/2	100				2/2								2									35:31
12	YANG Chunfeng																								22:29
13	ZHUANG Hongyan		8/12	67	3/5			1/1	2/2	1/1	1/3		3	1		1	3	1							34:48
15	YANG Yue		1/2	50		0/1					1/1				2				1						26:09
18	WANG Jingjing	S	1/5	20	0/2	1/1	0/1	0/1									1		1						31:12
20	HOU Changqing	S	3/3	100		3/3											1	1							37:24
22	LI Luyao	S																							22:57
23	WANG Xiaoyun	S	1/2	50	1/2								2			2	1								22:57
28	LIU Xuedan		3/4	75	1/2					2/2			2	2	1	1	3								30:27
53	LIU Yuting	S	0/1	0		0/1							1			1	1						1		35:10
	Team / bench																								
	UKUPNO		24/45	53	8/23	4/6	3/4	4/5	1/1	3/5	1/1		5	6	5	3	21	6	2	0	0	2	0	0	

Goalkeepers		Saves / shots								
#	Surname and name	Tot.	%	9m	6m	Wing	7m	FB	Brk.	LD
1	SUN Yihan	1/8	13	0/1	0/3	0/1	1/1	0/1	0/1	
12	YANG Chunfeng	3/14	21	1/5	1/3	1/2	0/1	0/1	0/2	
22	LI Luyao	1/20	5	1/6	0/6	0/3		0/2	0/3	
	TOTAL	5/42	12	2/12	1/12	1/6	1/2	0/4	0/6	0/0

Coach: Suzana Lazovic

Number of attacks: 61, Efficiency: 39%, Average Duration: 36.56 seconds

Attack by type of defense

	Shots	9m	6m	Wing	TF	E7	E2
On def. 6-0	16/36	7/22	3/5	3/4	21	5	3
On def. 5-1	1/1	1/1	0/0	0/0	0	0	0
Fastbreak	1/1				0	0	0

Defense by type

	Total	9m	6m	Wing	Stl.	C7	2m
Def. 6-0	32/43	10/15	11/12	5/8	6	2	0
Fastbreak	4/4				0	0	2

Attack with superiority / minority / goalkeeper out

	Attack				Reaction		
	Att.	Eff.	Shots	TF	FB	LD	Tot.
7 on 6 (GK out)	1	0%	0/0	1	0/0	0/0	0/0
6 on 6 (GK out)	1	0%	0/0	1	0/0	1/1	1/1
6 on 6	50	36%	18/33	17			
5 on 6	3	33%	1/2	1			
6 on 5	5	80%	4/4	1			
6 on 4	1	100%	1/1	0			

Player superiority / GK out counted at the end of attack (in case it changes during attack)

Defense with superiority / minority / goalkeeper out

	Attack				Reaction		
	Att.	Eff.	Shots	TF	FB	LD	Tot.
7 on 6 (GK out)	1	100%	1/1	0	0/0	0/0	0/0
6 on 6 (GK out)	4	75%	3/3	1	0/0	1/1	1/1
5 on 6 (GK out)	1	0%	0/0	1	0/0	0/0	0/0
6 on 6	52	60%	31/40	12			
6 on 5	4	75%	3/4	0			

Numbers show attacking numbers of opponent. Lower efficiency of opponent means better defense of this team

Jersey number Tot. Total shooting 6m 6m (line) shooting 9m 9m shooting Wng Wing shooting FB Fastbreak sh. 7m 7m penalty sh.
 Brk. Breakthrough sh. LD Long distance sh. As. Assists PC Pass clear chance E7 Earned 7m pen. TF Technical faults St. Steals
 2m 2m punishments C7 Committed 7m E2 Earned 2m pun. YC. Yellow cards R/B Red/Blue cards Blk. Blocks S Starting Line-up



24th IHF Women's Junior (U20) World Championship



Group E, 1. round

Match Team Statistics

Match No. 9

Sweden 38 - 24 China

(19 - 13) (19 - 11)

19.6.2024. 15:45

Attendance: 75

Sport Centre Jane Sandanski

Referees: Mohammed Jassim Al Saqer (KSA) / Ali Mohammed Al Suqfi (KSA)

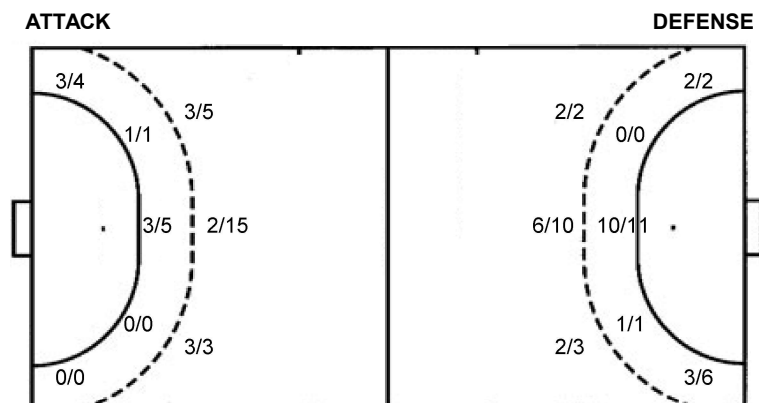
Shot distribution by player

3 F. Pan 1/1	5 Z. Zhuo 1 miss. 1/1	6 Z. Liu 1 miss. 1 block 1/1 0/1	7 S. Zhang	8 J. Liang 3 block 0/1 0/1	10 Z. Shi 1/1 1/1	13 H. Zhuang 1 post 1 block 3/3 lob 1/1 0/1 4/5
15 Y. Yang 0/1 lob 1/1	18 J. Wang 2 miss. 0/1 1/1 0/1	20 C. Hou 2/2 lob 1/1	23 X. Wang 1 miss. 1/1	28 X. Liu 1 miss. 1/1 1/1	53 Y. Liu 0/1 lob	TOTAL 1 post 6 miss. 5 block 5/7 lob 4/4 2/2 0/1 1/1 4/5 1/4 7/9

Saves distribution goalkeepers

1 Y. Sun 0/3 1/2 0/1	12 C. Yang 0/3 2/2 0/1 0/1 1/1 0/1 0/1 0/4	22 L. Li 0/2 0/3 0/4 0/2 0/1 1/3 0/2 0/2	TOTAL 0/8 2/5 0/5 0/3 0/1 3/6 0/4 0/1 0/6
--------------------------------------	------------------------------------------------------------	----------------------------------------------------------	-----------------------------------------------------------

Shots by position



7m penalties 4/5
Fastbreak 1/1
Breakthrough 3/5
Long dist. 1/1

7m penalties 1/2
Fastbreak 4/4
Breakthrough 6/8
Long dist. 1/1

Shooting statistics

Position	Goals	Sav.	Miss.	Post	Blk.	Total	%
Back (9m)	8	5	5	0	5	23	35
Line (6m)	4	2	0	0	0	6	67
Wing	3	0	1	0	0	4	75
7m penalties	4	1	0	0	0	5	80
Fastbreak	1	0	0	0	0	1	100
Breakthrough	3	1	0	1	0	5	60
Total	23	9	6	1	5	44	52

Jersey number Tot. Total shooting 6m 6m (line) shooting 9m 9m shooting Wng Wing shooting FB Fastbreak sh. 7m 7m penalty sh.
Brk. Breakthrough sh. LD Long distance sh. As. Assists PC Pass clear chance E7 Earned 7m pen. TF Technical faults St. Steals
2m 2m punishments C7. Committed 7m E2 Earned 2m pun. YC. Yellow cards R/B Red/Blue cards Blk. Blocks S Starting Line-up



24th IHF Women's Junior (U20) World Championship



Group E, 1. round

Match Team Statistics

Match No. 9

Sweden 38 - 24 China

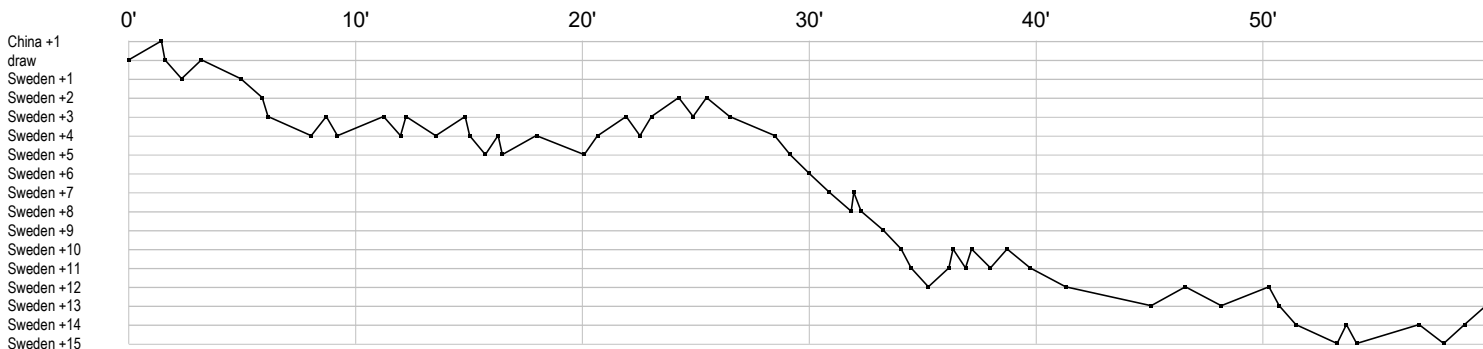
(19 - 13) (19 - 11)

19.6.2024. 15:45

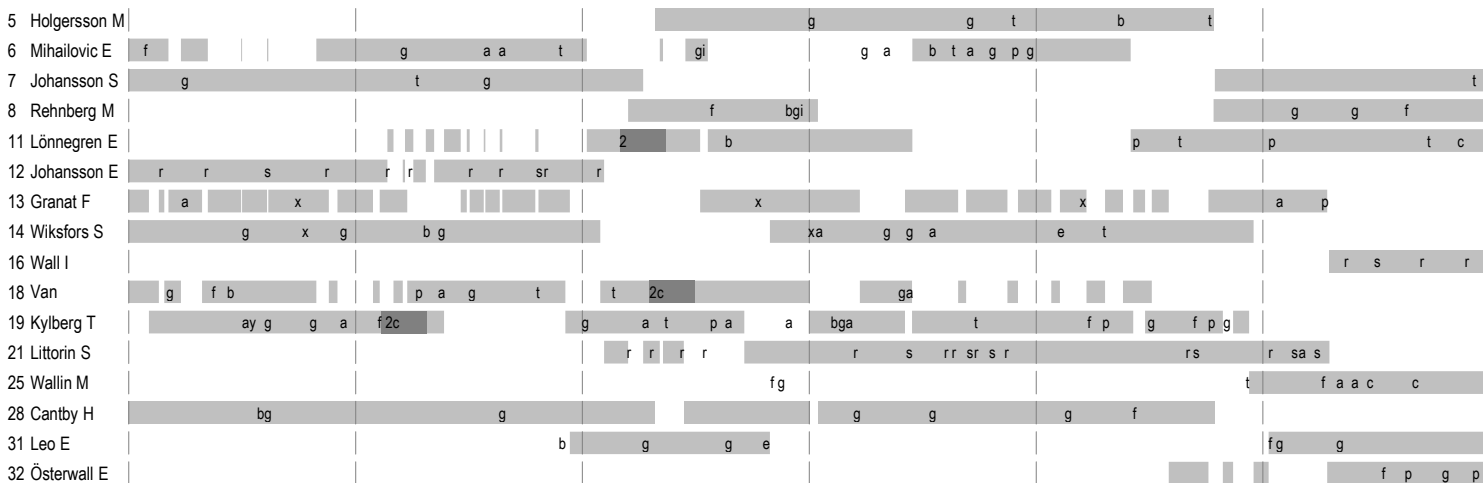
Attendance: 75

Sport Centre Jane Sandanski

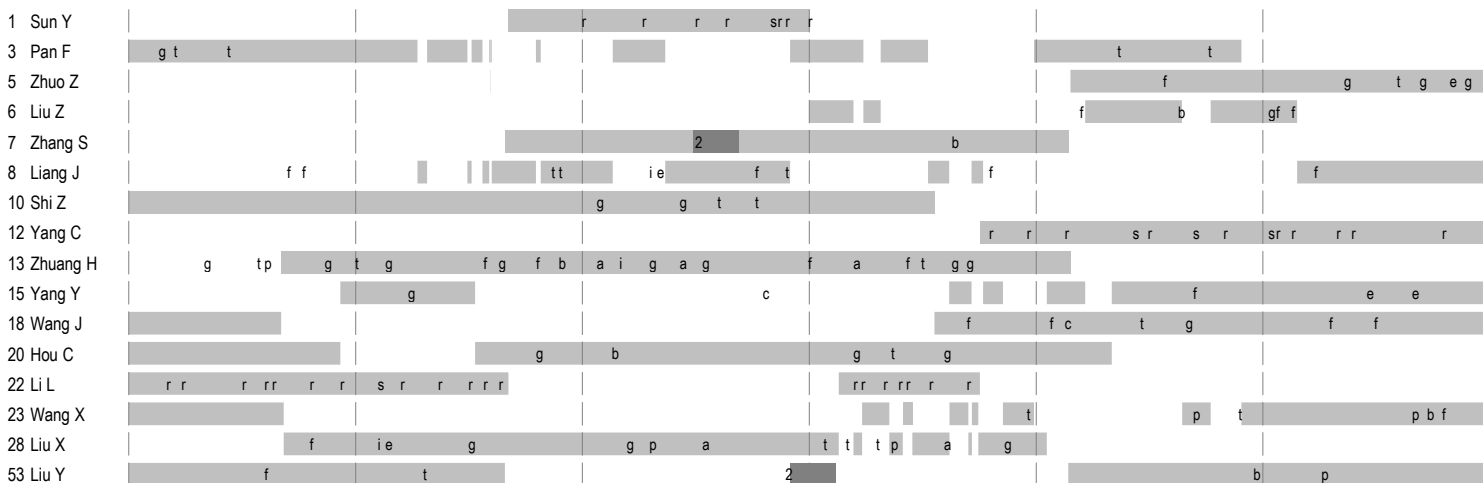
Referees: Mohammed Jassim Al Saqer (KSA) / Ali Mohammed Al Suqufi (KSA)



Sweden



China



In game	g Goal scored	f Missed shot	a Assist	t Technical faults	b Steal
2 2min suspension	e Earned 7m	c Committed 7m	y Yellow card	r Red Card	k Blue card
i Earned 2min.	x Block	4 4min suspension	p Pass for clear chance	s Saved shot	r Received goal