



24th IHF Women's Junior (U20) World Championship



Group D, 1. round

Match Team Statistics
Match No. 8

Norway 35 - 18 Chinese Taipei
(17 - 12) (18 - 6)

19.6.2024. 18:00
Attendance: 60
Sport Centre Boris Trajkovski

Referees: Marzieh Ghofli (IRI) / Mozhgan Hassanzadeh (IRI)

Norway

#	Surname and name	S	Goals / shots								Attack				Def.			Penalties				TP	
			Tot.	%	9m	6m	Wing	7m	FB	Brk.	LD	As.	PC	E7	E2	TF	St.	C7	Blk	YC	2m		R
1	MARDALEN Kadija										1	1			3								26:41
2	KRUSE Stella		3/8	38		1/2	1/4		1/2														28:51
3	GRONSTAD Pia	S	1/5	20		0/2			1/3				1			2							30:27
4	LAE Sofie Donna Aasland		0/3	0	0/1	0/1				0/1	1				1								17:15
6	ENGER Mathea		4/5	80			1/1	1/1	2/3		2	3	1		1	1		1					27:22
8	KAMBURCE Selin	S	4/6	67		3/5			1/1														31:36
12	FRISENDAL Dina	S										2			5								30:00
14	HUSAAS Jenny Bing	S	3/4	75	0/1				3/3		5	2			1	1	2	2					30:24
15	PHARO Tuva		3/3	100		1/1			2/2		1						1	3					28:40
16	SELNES Frida Molaup		0/1	0	0/1																		27:22
18	SOLBAKKEN Eline Mangen	S	2/2	100		2/2										1	3			1			31:56
19	JULLUMSTRO Nicoline		6/8	75		1/1	3/5		2/2		2				1	1							28:39
20	MJOS Marie	S	6/7	86	1/1			2/2	1/1	2/3	4	1			1	1	1		1				33:03
23	EDNER Emma Egge	S	2/2	100					1/1	1/1		1			1							1	26:32
26	ROSENBERG Nora Eveline Cecilia		1/1	100					1/1		5	4	1	1	1	1	2					1	31:40
33	IDLAND Tiril Tveit											1			1	1	1						16:25
	Team / bench																						
	UKUPNO		35/55	64	1/3	5/8	7/16	3/3	10/13	9/12	0/0	21	15	3	1	15	8	10	8	0	4	0	0

#	Surname and name	Saves / shots								
		Tot.	%	9m	6m	Wing	7m	FB	Brk.	LD
1	MARDALEN Kadija	10/17	59	4/5	1/1	2/3	2/5	0/1	1/2	
12	FRISENDAL Dina	2/13	15	2/5	0/1		0/5	0/1	0/1	
16	SELNES Frida Molaup									
	TOTAL	12/30	40	6/10	1/2	2/3	2/10	0/2	1/3	0/0

Coach: Eirik Haugdal

Number of attacks: 68, Efficiency: 51%, Average Duration: 18.51 seconds

Attack by type of defense

	Shots	9m	6m	Wing	TF	E7	E2
On def. 6-0	16/30	1/3	4/6	6/13	13	2	0
On def. 5-1	1/1	0/0	0/0	0/0	0	0	0
On def. 4-2	2/2	0/0	0/0	0/0	0	0	0
On def. 3-3	3/5	0/0	1/1	1/3	2	1	1
Fastbreak	10/13				0	0	0

Defense by type

	Total	9m	6m	Wing	Stl.	C7	2m
Def. 6-0	8/32	4/23	1/2	1/3	8	10	0
Fastbreak	2/2				0	0	4

Defense with superiority / minority / goalkeeper out

	Attack				Reaction		
	Att.	Eff.	Shots	TF	FB	LD	Tot.
7 on 6 (GK out)	1	0%	0/1	0	0/0	0/0	0/0
6 on 6	52	29%	15/32	20			
5 on 6	6	0%	0/3	3			
6 on 5	8	25%	2/3	5			
6 on 4	1	100%	1/1	0			

Numbers show attacking numbers of opponent. Lower efficiency of opponent means better defense of this team

Attack with superiority / minority / goalkeeper out

	Attack				Reaction		
	Att.	Eff.	Shots	TF	FB	LD	Tot.
7 on 6 (GK out)	2	100%	2/2	0	0/0	0/0	0/0
6 on 6 (GK out)	4	25%	1/4	0	0/0	0/0	0/0
6 on 6	49	49%	24/37	12			
6 on 5	9	67%	6/7	2			
5 on 6	4	50%	2/3	1			

Player superiority / GK out counted at the end of attack (in case it changes during attack)

Jersey number Tot. Total shooting 6m 6m (line) shooting 9m 9m shooting Wng Wing shooting FB Fastbreak sh. 7m 7m penalty sh.
Brk. Breakthrough sh. LD Long distance sh. As. Assists PC Pass clear chance E7 Earned 7m pen. TF Technical faults St. Steals
2m 2m punishments C7. Committed 7m E2 Earned 2m pun. YC. Yellow cards R/B Red/Blue cards Blk. Blocks S Starting Line-up



24th IHF Women's Junior (U20) World Championship



Group D, 1. round

Match Team Statistics

Match No. 8

Norway 35 - 18 Chinese Taipei

(17 - 12) (18 - 6)

19.6.2024. 18:00

Attendance: 60

Sport Centre Boris Trajkovski

Referees: Marzieh Ghofli (IRI) / Mozhgan Hassanzadeh (IRI)

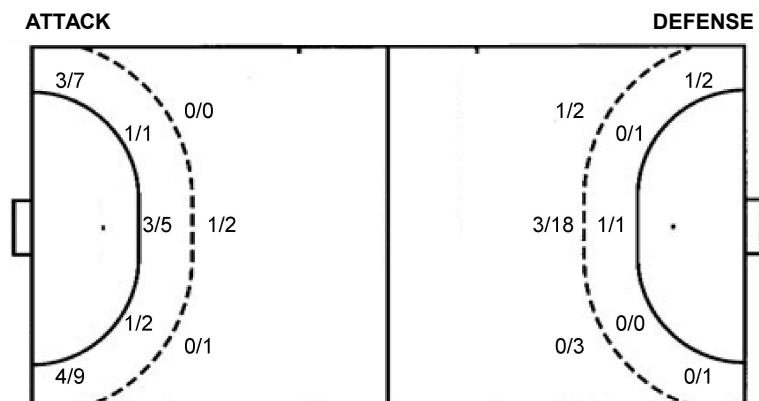
Shot distribution by player

2 S. Kruse 2/3 1/2 2 post 0/1 lob	3 P. Gronstad 0/1 1/2 0/2 lob	4 S. Lae 0/1 0/1 1 miss.	6 M. Enger 3/3 0/1 1/1	8 S. Kamburce 0/1 2/2 1/2 lob	14 J. Husaas 1/1 1/1 1/1 1 miss.	15 T. Pharo 1/1 1/1 1/1
18 E. Solbakken 1/1 1/1	19 N. Jullumstro 2/2 1/1 1/1 1/2 lob	20 M. Mjos 1/1 2/2 1/1 1/1 1/1	23 E. Edner 1/1 1/1	26 N. Rosenberg 1/1	33 T. Idland	TOTAL 8/10 0/1 4/4 6/8 4/6 3/4 2/2 6/8 2 post 2 miss. 2/7 lob

Saves distribution goalkeepers

1 K. Mardalen 0/1 3/3 3/5	12 D. Frisendal 1/1 1/2 0/1 0/3 0/4 0/2	16 F. Selnes	TOTAL 1/2 1/1 4/5 0/1 2/5 3/9 0/1 1/4
---	---	---------------------	---

Shots by position



7m penalties 3/3
Fastbreak 10/13
Breakthrough 9/12
Long dist. 0/0

7m penalties 8/10
Fastbreak 2/2
Breakthrough 2/4
Long dist. 0/0

Shooting statistics

Position	Goals	Sav.	Miss.	Post	Blk.	Total	%
Back (9m)	1	1	1	0	0	3	33
Line (6m)	5	2	1	0	0	8	63
Wing	7	7	0	2	0	16	44
7m penalties	3	0	0	0	0	3	100
Fastbreak	10	3	0	0	0	13	77
Breakthrough	9	3	0	0	0	12	75
Total	35	16	2	2	0	55	64

Jersey number Tot. Total shooting 6m 6m (line) shooting 9m 9m shooting Wng Wing shooting FB Fastbreak sh. 7m 7m penalty sh.
Brk. Breakthrough sh. LD Long distance sh. As. Assists PC Pass clear chance E7 Earned 7m pen. TF Technical faults St. Steals
2m 2m punishments C7. Committed 7m E2 Earned 2m pun. YC. Yellow cards R/B Red/Blue cards Blk. Blocks S Starting Line-up

Handball statistics and livescore by Toma-soft ltd (www.toma-soft.hr)



24th IHF Women's Junior (U20) World Championship



Group D, 1. round

Match Team Statistics

Match No. 8

Norway 35 - 18 Chinese Taipei
(17 - 12) (18 - 6)

19.6.2024. 18:00

Attendance: 60

Sport Centre Boris Trajkovski

Referees: Marzieh Ghofli (IRI) / Mozhgan Hassanzadeh (IRI)

Chinese Taipei

Players		Goals / shots									Attack					Def.			Penalties			TP			
#	Surname and name	S	Tot.	%	9m	6m	Wing	7m	FB	Brk.	LD	As.	PC	E7	E2	TF	St.	C7	Blk	YC	2m		R	B	
1	WU Hsin Yun	S																							60:00
7	SHIH Chi Chiao En	S	1/5	20	0/2			0/1	1/1	0/1		1	1	4	1	8									47:43
8	TIEN Yun Ju	S	4/10	40	3/7	0/1	0/1			1/1		1	2	2		6	1	1				1			54:48
10	CHEN Yen Chun	S	1/1	100			1/1									2									34:29
14	YU Chien Yu																								1:02
18	LI Hsin Yi																								
19	YU Chia Ying		0/1	0	0/1																				6:17
23	CHANG Fu Ying																								3:43
24	LIEN Yi Ling	S	0/5	0	0/4		0/1					1		1	4	1									42:22
28	LI Yun Ci																								
29	LIN Ching																								9:09
36	CHUAN Heng Yi		0/1	0	0/1							1		1	1		1					1			7:43
66	LEE Ying Chi		3/6	50	0/3			2/2	1/1			1	2	1	3										40:10
77	HSU Fang Ying	S	2/3	67		1/1				1/2				2		1	1					1			43:39
79	CHANG Ya Ting	S	7/12	58	1/5			6/7				2				3	1								58:46
88	YANG I Chen																								10:09
	Team / bench																								
	UKUPNO		18/44	41	4/23	1/2	1/3	8/10	2/2	2/4	0/0	4	6	10	4	28	3	3	0	0	0	3	0	0	

Goalkeepers		Saves / shots								
#	Surname and name	Tot.	%	9m	6m	Wing	7m	FB	Brk.	LD
1	WU Hsin Yun	16/51	31	1/2	2/7	7/14	0/3	3/13	3/12	
18	LI Hsin Yi									
	TOTAL	16/51	31	1/2	2/7	7/14	0/3	3/13	3/12	0/0

Coach: **Ling Hui Chia**

Number of attacks: 68, Efficiency: 26%, Average Duration: 34.25 seconds

Attack by type of defense

	Shots	9m	6m	Wing	TF	E7	E2
On def. 6-0	8/32	4/23	1/2	1/3	28	10	4
Fastbreak	2/2				0	0	0

Defense by type

	Total	9m	6m	Wing	Stl.	C7	2m
Def. 6-0	16/30	1/3	4/6	6/13	3	2	0
Def. 5-1	1/1	0/0	0/0	0/0	0	0	0
Def. 4-2	2/2	0/0	0/0	0/0	0	0	0
Def. 3-3	3/5	0/0	1/1	1/3	0	1	0
Fastbreak	10/13				0	0	3

Attack with superiority / minority / goalkeeper out

	Attack				Reaction		
	Att.	Eff.	Shots	TF	FB	LD	Tot.
7 on 6 (GK out)	1	0%	0/1	0	0/0	0/0	0/0
6 on 6	52	29%	15/32	20			
5 on 6	6	0%	0/3	3			
6 on 5	8	25%	2/3	5			
6 on 4	1	100%	1/1	0			

Player superiority / GK out counted at the end of attack (in case it changes during attack)

Defense with superiority / minority / goalkeeper out

	Attack				Reaction		
	Att.	Eff.	Shots	TF	FB	LD	Tot.
7 on 6 (GK out)	2	100%	2/2	0	0/0	0/0	0/0
6 on 6 (GK out)	4	25%	1/4	0	0/0	0/0	0/0
6 on 6	49	49%	24/37	12			
6 on 5	9	67%	6/7	2			
5 on 6	4	50%	2/3	1			

Numbers show attacking numbers of opponent. Lower efficiency of opponent means better defense of this team

Jersey number Tot. Total shooting 6m 6m (line) shooting 9m 9m shooting Wng Wing shooting FB Fastbreak sh. 7m 7m penalty sh.
 Brk. Breakthrough sh. LD Long distance sh. As. Assists PC Pass clear chance E7 Earned 7m pen. TF Technical faults St. Steals
 2m 2m punishments C7. Committed 7m E2 Earned 2m pun. YC. Yellow cards R/B Red/Blue cards Blk. Blocks S Starting Line-up



24th IHF Women's Junior (U20) World Championship



Group D, 1. round

Match Team Statistics

Match No. 8

Norway 35 - 18 Chinese Taipei

(17 - 12) (18 - 6)

19.6.2024. 18:00

Attendance: 60

Sport Centre Boris Trajkovski

Referees: Marzieh Ghofli (IRI) / Mozhgan Hassanzadeh (IRI)

Shot distribution by player

7 C. Shih 0/1 2 miss. 1 block 1/1 lob	8 Y. Tien 1/2 1/1 0/1 1/2 1/1 1 miss. 2 block	10 Y. Chen 1/1 lob	14 C. Yu	19 C. Yu 1 post	23 F. Chang	24 Y. Lien 0/1 0/1 0/1
28 Y. Li	29 C. Lin	36 H. Chuan 0/1	66 Y. Lee 1/1 1/1 3 block	77 F. Hsu 0/1 2/2	79 Y. Chang 1/2 2/2 0/1 2/2 2/3 1/1 1/1 1 post 1 block	88 I. Yang

TOTAL

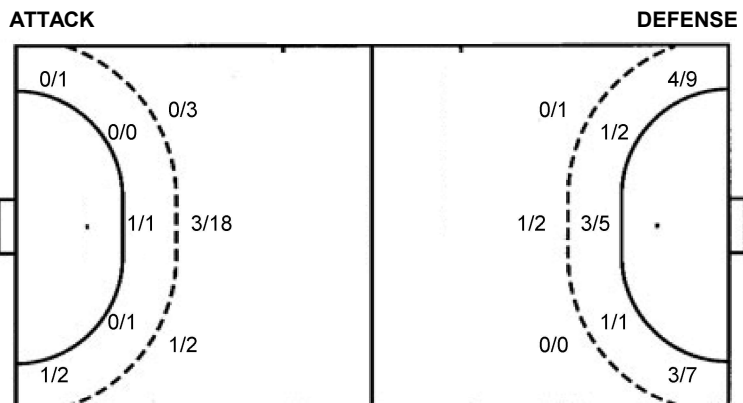
1/2		0/1
1/5	1/1	3/5
6/9	1/1	3/4

2 post 4 miss. 8 block 2/2 lob

Saves distribution goalkeepers

1 H. Wu 2/10 1/1 0/4 2/8 1/1 2/6 1/4 0/2 2/8	18 H. Li	TOTAL 2/10 1/1 0/4 2/8 1/1 2/6 1/4 0/2 2/8
--	-----------------	--

Shots by position



7m penalties	8/10	7m penalties	3/3
Fastbreak	2/2	Fastbreak	10/13
Breakthrough	2/4	Breakthrough	9/12
Long dist.	0/0	Long dist.	0/0

Shooting statistics

Position	Goals	Sav.	Miss.	Post	Blk.	Total	%
Back (9m)	4	6	3	2	8	23	17
Line (6m)	1	1	0	0	0	2	50
Wing	1	2	0	0	0	3	33
7m penalties	8	2	0	0	0	10	80
Fastbreak	2	0	0	0	0	2	100
Breakthrough	2	1	1	0	0	4	50
Total	18	12	4	2	8	44	41

Jersey number Tot. Total shooting 6m 6m (line) shooting 9m 9m shooting Wng Wing shooting FB Fastbreak sh. 7m 7m penalty sh.
 Brk. Breakthrough sh. LD Long distance sh. As. Assists PC Pass clear chance E7 Earned 7m pen. TF Technical faults St. Steals
 2m 2m punishments C7. Committed 7m E2 Earned 2m pun. YC. Yellow cards R/B Red/Blue cards Blk. Blocks S Starting Line-up



24th IHF Women's Junior (U20) World Championship



Group D, 1. round

Match Team Statistics

Match No. 8

Norway 35 - 18 Chinese Taipei

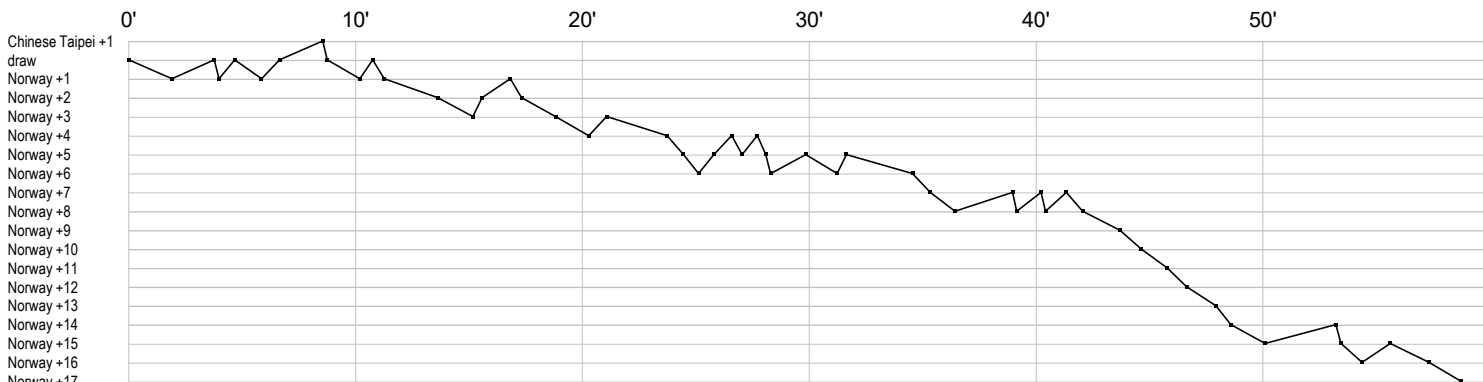
(17 - 12) (18 - 6)

19.6.2024. 18:00

Attendance: 60

Sport Centre Boris Trajkovski

Referees: Marzieh Ghofli (IRI) / Mozhgan Hassanzadeh (IRI)



Norway

1	Mardalen K	r	ar	s	s	ss	spstr	tr	r	s	s	t	r	r	s	s
2	Kruse S	g	f	f	fg										g	f
3	Gronstad P	f	b	f	g	e	f	b						f		
4	Lae S				t	a		f					f	f		
6	Enger M	e	g		g	pt		f				a	g	p	g	x
8	Kamburce S	g	g	f					g	g	f					
12	Frisendal D	r	r	t	r	t	r	t	ps	r	r	t	r	ts	p	r
14	Husaas J	a	xa	a	t	xb	f			p	c	a	a	p	g	c
15	Pharo T	g	c				x	g	a	x					x	g
16	Selnes F								f							
18	Solbakken E	2	g	c	c						b	cg				
19	Jullumstro N						g	g	g	f			g	a	f	a
20	Mjos M	c	p	a	a	g	g	g	f	g	2	a	g	a	x	bg
23	Edner E	p			t					g	g ²					
26	Rosenberg N				a	p	b	p	a	c	a	c ²			ie	p
33	Idland T						x								c	p

Chinese Taipei

1	Wu H	r	s	r	s	r	r	r	s	r	s	r	r	r	s	r	r	r	r	s	r	r	r	s	r	r	r				
7	Shih C	t	e	e			f	e	t	a	t	t	e	t	f	fg	i	t	t	f								t			
8	Tien Y	g	p	g			t	g	2c		f	f	g	b	f		f	t	p	e			t	f	t	ta	t	e	f		
10	Chen Y	t	t																									g			
14	Yu C																														
18	Li H																														
19	Yu C								f																						
23	Chang F																														
24	Lien Y	f	i	t	t				bt			t	f			p			f				f		f	f					
28	Li Y																														
29	Lin C																														
36	Chuan H														i	p			f							t ^{2c}					
66	Lee Y				f	t								g	f	te			e			g		f					g	p	
77	Hsu F	e			c ²									g						t			f	e							
79	Chang Y	f	g	g			g	t	f	g	f			a	g	g	a	f			g	b				t	t			f	
88	Yang I																														

In game	g Goal scored	f Missed shot	a Assist	t Technical faults	b Steal
2 2min suspension	e Earned 7m	c Committed 7m	y Yellow card	r Red Card	k Blue card
i Earned 2min.	x Block	4 4min suspension	p Pass for clear chance	s Saved shot	r Received goal