



24th IHF Women's Junior (U20) World Championship



Group D, 1. round

Match Team Statistics

Denmark 43 - 25 Japan

19.6.2024. 15:45

Match No. 7

(22 - 12) (21 - 13)

Attendance: 50

Sport Centre Boris Trajkovski

Referees: Michal Zahradnik (SVK) / Andrej Budzak (SVK)

Denmark

Players		Goals / shots									Attack					Def.			Penalties			TP			
#	Surname and name	S	Tot.	%	9m	6m	Wing	7m	FB	Brk.	LD	As.	PC	E7	E2	TF	St.	C7	Bik	YC	2m		R	B	
1	ALMIND Stine Skovbo	S																							14:17
3	BANG Clara Ronde Haugaard		7/7	100	2/2					5/5			1				1	1	2						20:58
6	LAURSEN Boline Haugaard		3/5	60	0/1	2/3			1/1																20:13
7	VESTERGAARD Matilde Marie	S	5/8	63		1/1	2/4	1/1	1/2			1						1							37:18
8	NIELSEN Ida Marie Wrang		2/3	67		0/1				2/2		1					2	2	1						25:50
9	THESTRUP Laura Maria Borg	S	6/9	67	5/8					1/1		2	1				2	1		1					39:45
10	LARSEN Filipa Nedovic	S	2/3	67		2/3											1		1	1	1				24:00
12	KAYSEN Ida Marie Barholm																								43:35
14	WAAGE-JENSEN Frederikke		1/1	100			1/1					1				2									28:13
17	JENSEN Emma Skipper		3/3	100		3/3																			15:47
18	NICKELSEN Martha	S	4/4	100	2/2	1/1				1/1		3	1					1							39:22
21	JOHANSEN Anne With	S	3/8	38	1/3				0/1	2/4		8	1	1			1								31:30
23	LARSEN Josefine Kaa		3/4	75			1/1		2/3			1													22:42
24	LUND Esther Birk																								
25	VINTHER Nanna Skovmose	S	3/6	50	1/2		2/2		0/2									1							31:36
28	LUND Astrid Leslie		1/1	100						1/1		1	1				2	1	1				1		24:54
	Team / bench																								
	UKUPNO		43/62	69	11/18	9/12	6/8	1/1	4/9	12/14	0/0	19	4	1	0	10	8	6	2	1	1	0	0		

Goalkeepers		Saves / shots								
#	Surname and name	Tot.	%	9m	6m	Wing	7m	FB	Brk.	LD
1	ALMIND Stine Skovbo	2/12	17	1/3	0/1	0/1	0/3	0/1	1/3	
12	KAYSEN Ida Marie Barholm	11/26	42	2/5	3/3	0/3	1/3	0/2	5/10	
	TOTAL	13/38	34	3/8	3/4	0/4	1/6	0/3	6/13	0/0

Coach: Flemming Dam Larsen

Number of attacks: 70, Efficiency: 61%, Average Duration: 24.73 seconds

Attack by type of defense

	Shots	9m	6m	Wing	TF	E7	E2
On def. 6-0	36/49	11/18	7/9	6/8	10	1	0
Fastbreak	4/9				0	0	0

Defense by type

	Total	9m	6m	Wing	Stl.	C7	2m
Def. 6-0	17/39	5/15	1/4	4/6	8	6	0
Fastbreak	3/3				0	0	1

Attack with superiority / minority / goalkeeper out

	Attack				Reaction		
	Att.	Eff.	Shots	TF	FB	LD	Tot.
7 on 6 (GK out)	4	100%	4/4	0	0/0	0/0	0/0
6 on 6	63	59%	37/53	10			
6 on 5	2	100%	2/2	0			
5 on 6	1	0%	0/1	0			

Player superiority / GK out counted at the end of attack (in case it changes during attack)

Defense with superiority / minority / goalkeeper out

	Attack				Reaction		
	Att.	Eff.	Shots	TF	FB	LD	Tot.
7 on 6 (GK out)	7	29%	2/5	2	0/1	0/0	0/1
6 on 6 (GK out)	1	0%	0/0	1	0/0	0/0	0/0
6 on 6	60	35%	21/36	24			
5 on 6	1	100%	1/1	0			
7 on 5 (GK out)	1	100%	1/1	0	0/0	0/0	0/0
6 on 5	1	0%	0/1	0			

Numbers show attacking numbers of opponent. Lower efficiency of opponent means better defense of this team

Jersey number Tot. Total shooting 6m 6m (line) shooting 9m 9m shooting Wng Wing shooting FB Fastbreak sh. 7m 7m penalty sh.
 Brk. Breakthrough sh. LD Long distance sh. As. Assists PC Pass clear chance E7 Earned 7m pen. TF Technical faults St. Steals
 2m 2m punishments C7. Committed 7m E2 Earned 2m pun. YC. Yellow cards R/B Red/Blue cards Blk. Blocks S Starting Line-up



24th IHF Women's Junior (U20) World Championship



Group D, 1. round

Match Team Statistics

Match No. 7

Denmark 43 - 25 Japan

(22 - 12) (21 - 13)

19.6.2024. 15:45

Attendance: 50

Sport Centre Boris Trajkovski

Referees: Michal Zahradnik (SVK) / Andrej Budzak (SVK)

Shot distribution by player

3 C. Bang 2/2 1/1 1/1 3/3	6 B. Laursen 1/1 1/2 1/1 1 post	7 M. Vestergaard 2/2 2/4 1 miss. 1/1 lob	8 I. Nielsen 1/1 1/1 1 post	9 L. Thestrup 2/2 1/2 0/1 1 miss.	10 F. Larsen 1/1 1 miss. 1/1 lob	14 F. Waage-Jensen 1/1 lob
17 E. Jensen 1/1 1/1	18 M. Nickelsen 1/1 1/1 2/2	21 A. Johansen 2/2 1/2 3 miss. 1 block	23 J. Larsen 1/1 2/2 1 miss.	24 E. Lund	25 N. Vinther 1/1 0/1 0/1 2/2 1 post	28 A. Lund 1/1

TOTAL

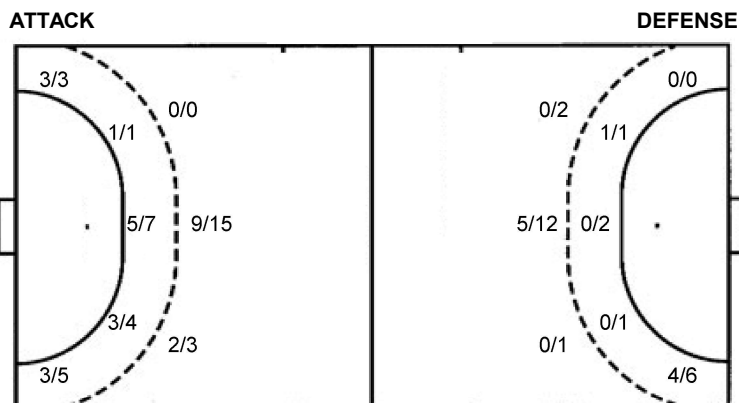
6/6	9/9
6/9	1/2
7/10	0/1 11/11

3 post 7 miss. 1 block 3/3 lob

Saves distribution goalkeepers

1 S. Almind 0/2 2/4 0/3	12 I. Kaysen 1/2 1/1 1/1 2/2 2/2 1/3 1/8 0/2 1/4	TOTAL 1/4 1/1 1/1 4/6 2/2 1/3 1/11 0/2 1/6
---	--	--

Shots by position



7m penalties 1/1
Fastbreak 4/9
Breakthrough 12/14
Long dist. 0/0

7m penalties 5/6
Fastbreak 3/3
Breakthrough 7/14
Long dist. 0/0

Shooting statistics

Position	Goals	Sav.	Miss.	Post	Blk.	Total	%
Back (9m)	11	4	2	0	1	18	61
Line (6m)	9	0	1	2	0	12	75
Wing	6	1	1	0	0	8	75
7m penalties	1	0	0	0	0	1	100
Fastbreak	4	2	2	1	0	9	44
Breakthrough	12	1	1	0	0	14	86
Total	43	8	7	3	1	62	69

Jersey number Tot. Total shooting 6m 6m (line) shooting 9m 9m shooting Wng Wing shooting FB Fastbreak sh. 7m 7m penalty sh.
Brk. Breakthrough sh. LD Long distance sh. As. Assists PC Pass clear chance E7 Earned 7m pen. TF Technical faults St. Steals
2m 2m punishments C7. Committed 7m E2 Earned 2m pun. YC. Yellow cards R/B Red/Blue cards Blk. Blocks S Starting Line-up



24th IHF Women's Junior (U20) World Championship



Group D, 1. round

Match Team Statistics

Denmark 43 - 25 Japan

19.6.2024. 15:45

Match No. 7

(22 - 12) (21 - 13)

Attendance: 50

Sport Centre Boris Trajkovski

Referees: Michal Zahradnik (SVK) / Andrej Budzak (SVK)

Japan

#	Surname and name	S	Goals / shots								Attack				Def.			Penalties				TP	
			Tot.	%	9m	6m	Wing	7m	FB	Brk.	LD	As.	PC	E7	E2	TF	St.	C7	Blk	YC	2m		R
1	KITABAYASHI Riri	S										1			1								45:15
3	HOKAGUCHI Wakana	S	2/5	40	0/2		1/1			1/2		1		2	3								31:27
5	KOYAMA Ayumu	S	6/8	75	1/2		2/2	2/2		1/2					2								31:37
6	MIZUTANI Miu		0/2	0	0/2										2					1			12:21
7	HASHIMOTO Mao		3/4	75	0/1			2/2		1/1		1		1	2	1							28:44
8	ROKUGAWA Ayumi	S	3/5	60	1/3	1/1				1/1				1	3	1							33:12
9	SEKINO Ayano																						
10	KONYA Risa		1/3	33	0/1					1/2		1	3	2	1	3		1					27:13
11	AZUMA Konoka		3/8	38	0/1	1/3	1/2	1/1	0/1			1											26:48
14	OKUMURA Yusa		3/6	50	1/2				2/4			1			6								27:33
16	SUGIMOTO Mizuki																						11:26
18	SASAKI Ayaka	S	2/2	100				2/2									1						31:18
19	TERADA Waka																						21:12
22	KAWASAKI Miu	S	1/4	25	1/3				0/1			2			5	1							31:34
23	NAKAO Ai	S	1/1	100	1/1							1											31:32
25	KATO Mao												1										28:21
	Team / bench																						
	UKUPNO		25/48	52	5/15	1/4	4/6	5/6	3/3	7/14	0/0	6	7	6	1	27	4	1	0	0	1	0	0

#	Surname and name	Saves / shots								
		Tot.	%	9m	6m	Wing	7m	FB	Brk.	LD
1	KITABAYASHI Riri	3/37	8	2/10	0/6	0/5	0/1	1/5	0/10	
16	SUGIMOTO Mizuki	5/14	36	2/5	0/3	1/2		1/1	1/3	
	TOTAL	8/51	16	4/15	0/9	1/7	0/1	2/6	1/13	0/0

Coach: Satoshi Kawai

Number of attacks: 71, Efficiency: 35%, Average Duration: 26.25 seconds

Attack by type of defense

	Shots	9m	6m	Wing	TF	E7	E2
On def. 6-0	17/39	5/15	1/4	4/6	27	6	1
Fastbreak	3/3				0	0	0

Defense by type

	Total	9m	6m	Wing	Stl.	C7	2m
Def. 6-0	36/49	11/18	7/9	6/8	4	1	0
Fastbreak	4/9				0	0	1

Attack with superiority / minority / goalkeeper out

	Attack				Reaction		
	Att.	Eff.	Shots	TF	FB	LD	Tot.
7 on 6 (GK out)	7	29%	2/5	2	0/1	0/0	0/1
6 on 6 (GK out)	1	0%	0/0	1	0/0	0/0	0/0
6 on 6	60	35%	21/36	24			
5 on 6	1	100%	1/1	0			
7 on 5 (GK out)	1	100%	1/1	0	0/0	0/0	0/0
6 on 5	1	0%	0/1	0			

Player superiority / GK out counted at the end of attack (in case it changes during attack)

Defense with superiority / minority / goalkeeper out

	Attack				Reaction		
	Att.	Eff.	Shots	TF	FB	LD	Tot.
7 on 6 (GK out)	4	100%	4/4	0	0/0	0/0	0/0
6 on 6	63	59%	37/53	10			
6 on 5	2	100%	2/2	0			
5 on 6	1	0%	0/1	0			

Numbers show attacking numbers of opponent. Lower efficiency of opponent means better defense of this team

Jersey number Tot. Total shooting 6m 6m (line) shooting 9m 9m shooting Wng Wing shooting FB Fastbreak sh. 7m 7m penalty sh.
 Brk. Breakthrough sh. LD Long distance sh. As. Assists PC Pass clear chance E7 Earned 7m pen. TF Technical faults St. Steals
 2m 2m punishments C7. Committed 7m E2 Earned 2m pun. YC. Yellow cards R/B Red/Blue cards Blk. Blocks S Starting Line-up



24th IHF Women's Junior (U20) World Championship



Group D, 1. round

Match Team Statistics

Match No. 7

Denmark 43 - 25 Japan

(22 - 12) (21 - 13)

19.6.2024. 15:45

Attendance: 50

Sport Centre Boris Trajkovski

Referees: Michal Zahradnik (SVK) / Andrej Budzak (SVK)

Shot distribution by player

3 W. Hokaguchi

0/2		
2/2		

1 block

5 A. Koyama

1/1		1/1
2/3		2/2

1 post

6 M. Mizutani

	0/1	0/1

7 M. Hashimoto

1/1		
	0/1	
1/1		1/1

8 A. Rokugawa

1/1		1/1

1 post 1 block 1/1 lob

9 A. Sekino

10 R. Konya

0/1		
	0/1	
	1/1	

11 K. Azuma

1/1		
0/2		1/1
1/1		

1 post 2 miss.

14 Y. Okumura

2/2	1/1	0/1

1 post 0/1 lob

18 A. Sasaki

1/1		
1/1		

19 W. Terada

22 M. Kawasaki

1/1		0/1

2 miss.

23 A. Nakao

	1/1	

25 M. Kato

TOTAL

3/4	0/1	0/1
2/6	0/2	2/3
10/11	2/2	5/6

4 post 4 miss. 2 block 1/2 lob

Saves distribution goalkeepers

1 R. Kitabayashi

0/5		0/8
1/6		0/1
1/5	1/1	0/8

16 M. Sugimoto

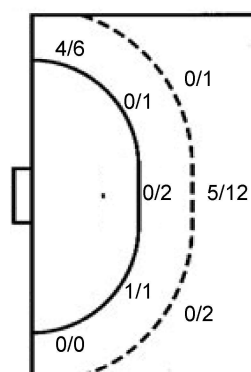
0/1		0/1
2/3		1/1
2/5		0/3

TOTAL

0/6		0/9
3/9		1/2
3/10	1/1	0/11

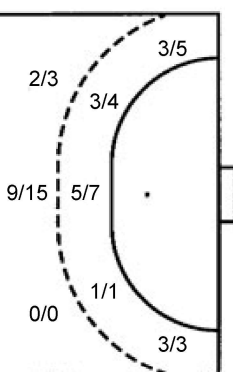
Shots by position

ATTACK



7m penalties 5/6
Fastbreak 3/3
Breakthrough 7/14
Long dist. 0/0

DEFENSE



7m penalties 1/1
Fastbreak 4/9
Breakthrough 12/14
Long dist. 0/0

Shooting statistics

Position	Goals	Sav.	Miss.	Post	Blk.	Total	%
Back (9m)	5	3	2	3	2	15	33
Line (6m)	1	3	0	0	0	4	25
Wing	4	0	1	1	0	6	67
7m penalties	5	1	0	0	0	6	83
Fastbreak	3	0	0	0	0	3	100
Breakthrough	7	6	1	0	0	14	50
Total	25	13	4	4	2	48	52

Jersey number Tot. Total shooting 6m 6m (line) shooting 9m 9m shooting Wng Wing shooting FB Fastbreak sh. 7m 7m penalty sh.
Brk. Breakthrough sh. LD Long distance sh. As. Assists PC Pass clear chance E7 Earned 7m pen. TF Technical faults St. Steals
2m 2m punishments C7. Committed 7m E2 Earned 2m pun. YC. Yellow cards R/B Red/Blue cards Blk. Blocks S Starting Line-up

Handball statistics and livescore by Toma-soft ltd (www.toma-soft.hr)



24th IHF Women's Junior (U20) World Championship



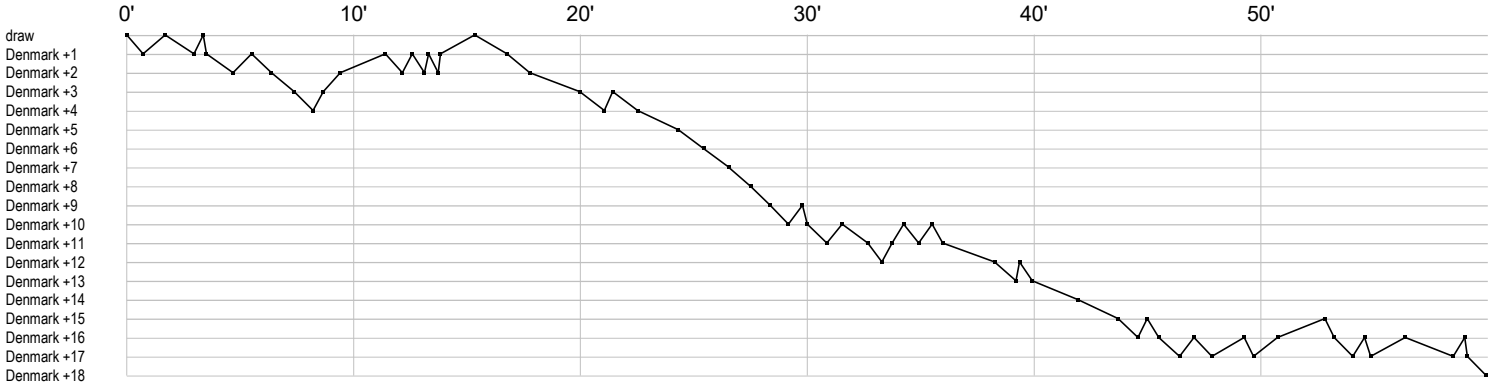
Group D, 1. round

Match Team Statistics
Match No. 7

Denmark 43 - 25 Japan
(22 - 12) (21 - 13)

19.6.2024. 15:45
Attendance: 50
Sport Centre Boris Trajkovski

Referees: Michal Zahradnik (SVK) / Andrej Budzak (SVK)



Denmark

1 Almind S	r s r r s r r r r r r r			r		
3 Bang C						
6 Laursen B						
7 Vestergaard	gf	g g g	a f			
8 Nielsen I						
9 Thestrup L	f gbp	t fx	g			
10 Larsen F	g x	tc	f g	y		
12 Kaysen I						
14 Waage-Jensen						
17 Jensen E						
18 Nickelsen M	a	c a	g			
21 Johansen A	b	g a e a	a aa p f			
23 Larsen J						
24 Lund E						
25 Vinther N	f	g				
28 Lund A						

Japan

1 Kitabayashi R	r s s r r r r r r r	s r r r	r r	r r	r r r r r r r r	r r	r r r r r r pr r r	r r r r	
3 Hokaguchi W	f	t e f t	f t e g	a					
5 Koyama A	g	g	g						
6 Mizutani M									
7 Hashimoto M									
8 Rokugawa A	t g	g f	b g						
9 Sekino A									
10 Konya R	c								
11 Azuma K									
14 Okumura Y									
16 Sugimoto M									
18 Sasaki A	g	b							
19 Terada W									
22 Kawasaki M	t	a	a gt						
23 Nakao A	a								
25 Kato M									

In game	g Goal scored	f Missed shot	a Assist	t Technical faults	b Steal
2 2min suspension	e Eearned 7m	c Committed 7m	y Yellow card	r Red Card	k Blue card
i Eearned 2min.	x Block	4 4min suspension	p Pass for clear chance	s Saved shot	r Received goal