



# 25th IHF Men's Junior World Championship 2025



Main Round - Group II, 1. round

Match Team Statistics

## Portugal 46 - 28 Japan

23.6.2025. 18:30

Match No. 56

(23 - 12) (23 - 16)

Attendance: 627

Arena Sosnowiec

Referees: Mariana Garcia (ARG) / Maria Ines Paolantoni (ARG)

### Portugal

| #  | Surname and name   | S | Goals / shots |     |      |       |      |     |       |      | Attack |     |    |    | Def. |    |     | Penalties |     |    |    | TP |   |   |   |       |       |
|----|--------------------|---|---------------|-----|------|-------|------|-----|-------|------|--------|-----|----|----|------|----|-----|-----------|-----|----|----|----|---|---|---|-------|-------|
|    |                    |   | Tot.          | %   | 9m   | 6m    | Wing | 7m  | FB    | Brk. | LD     | As. | PC | E7 | E2   | TF | St. | C7        | Blk | YC | 2m |    | R | B |   |       |       |
| 4  | MONTEIRO Filipe    |   | 1/1           | 100 |      |       |      |     |       |      |        |     |    |    | 4    |    |     |           |     |    |    |    |   |   |   |       | 15:21 |
| 5  | CAVALCANTI Gabriel | S | 5/9           | 56  | 3/3  |       |      |     |       | 1/3  | 1/3    |     |    |    | 1    |    |     |           |     |    |    |    |   | 2 |   |       | 28:46 |
| 7  | TEIXEIRA Tomás     |   | 3/3           | 100 | 1/1  | 1/1   |      |     |       |      |        |     |    |    | 2    |    |     |           |     |    |    |    |   |   |   |       | 17:16 |
| 10 | FERREIRA José      |   | 4/4           | 100 |      |       | 3/3  |     |       | 1/1  |        |     |    |    | 2    |    |     |           |     |    |    |    |   |   | 1 |       | 26:55 |
| 11 | MAGALHAES Joao     | S | 7/7           | 100 |      | 1/1   | 1/1  |     |       | 5/5  |        |     |    |    |      |    |     |           |     |    |    |    |   |   |   |       | 29:54 |
| 13 | VASCONCELOS Rafael | S | 1/1           | 100 |      |       |      |     |       | 1/1  |        |     |    |    | 3    |    |     |           |     |    |    |    |   |   |   |       | 22:22 |
| 15 | COSTA Eduardo      | S | 3/3           | 100 |      | 3/3   |      |     |       |      |        |     |    |    |      | 1  | 1   |           |     |    |    |    | 2 | 1 |   | 38:06 |       |
| 22 | CONCEIÇÃO Gabriel  |   | 1/2           | 50  | 1/1  |       |      |     | 0/1   |      |        |     |    |    | 4    |    |     | 1         | 1   |    |    |    |   |   |   |       | 29:23 |
| 23 | LOURENCO Joao      |   | 5/6           | 83  | 3/4  |       |      |     |       | 1/1  | 1/1    |     |    |    | 1    | 1  |     |           |     |    |    |    |   |   | 1 | 29:58 |       |
| 24 | MENDES Afonso      | S | 4/6           | 67  |      | 1/1   | 1/1  |     |       | 2/3  | 0/1    |     |    |    | 1    |    |     |           |     |    |    |    |   |   |   |       | 31:20 |
| 27 | COELHO Francisco   |   | 1/1           | 100 |      | 1/1   |      |     |       |      |        |     |    |    |      |    |     | 1         |     |    |    |    |   |   |   |       | 26:46 |
| 28 | MORGADO Gonçalo    |   |               |     |      |       |      |     |       |      |        |     |    |    |      |    |     |           |     |    |    |    |   |   |   |       | 27:32 |
| 30 | BRANDAO Ricardo    |   | 4/4           | 100 |      | 4/4   |      |     |       |      |        |     |    |    |      |    |     |           |     |    |    |    |   |   |   |       | 17:28 |
| 32 | CAMPOS Diogo       |   | 1/5           | 20  |      |       |      | 1/3 |       | 0/2  |        |     |    |    |      |    |     |           |     |    |    |    |   |   | 1 | 28:56 |       |
| 33 | MARQUES Diogo      | S |               |     |      |       |      |     |       |      |        |     |    |    | 2    | 2  |     |           |     |    |    |    |   |   |   |       | 29:31 |
| 34 | BARBOSA Xavier     | S | 6/8           | 75  | 0/1  | 2/2   |      |     |       |      |        |     |    |    | 2    |    |     |           | 3   | 1  |    |    |   |   |   |       | 20:25 |
|    | Team / bench       |   |               |     |      |       |      |     |       |      |        |     |    |    |      |    |     |           |     |    |    |    |   |   |   |       |       |
|    | TOTAL              |   | 46/60         | 77  | 8/10 | 13/13 | 6/8  | 0/1 | 11/16 | 8/12 | 0/0    |     |    |    | 22   | 3  | 1   | 2         | 11  | 1  | 0  | 5  | 0 | 4 | 0 | 0     |       |

| #  | Surname and name | Saves / shots |    |     |     |      |     |     |      |     |
|----|------------------|---------------|----|-----|-----|------|-----|-----|------|-----|
|    |                  | Tot.          | %  | 9m  | 6m  | Wing | 7m  | FB  | Brk. | LD  |
| 28 | MORGADO Gonçalo  | 5/20          | 25 | 0/2 | 0/2 | 2/5  | 2/6 | 0/1 | 1/4  |     |
| 33 | MARQUES Diogo    | 8/20          | 40 | 3/6 | 1/2 | 2/4  | 0/1 | 1/3 | 1/4  |     |
|    | TOTAL            | 13/40         | 33 | 3/8 | 1/4 | 4/9  | 2/7 | 1/4 | 2/8  | 0/0 |

Coach: Carlos Martingo

Number of attacks: 68, Efficiency: 68%, Average Duration: 22.44 seconds

### Attack by type of defense

|             | Shots | 9m   | 6m    | Wing | TF | E7 | E2 |
|-------------|-------|------|-------|------|----|----|----|
| On def. 6-0 | 35/43 | 8/10 | 13/13 | 6/8  | 11 | 1  | 2  |
| Fastbreak   | 11/16 |      |       |      | 0  | 0  | 0  |

### Defense by type

|           | Total | 9m   | 6m  | Wing | Stl. | C7 | 2m |
|-----------|-------|------|-----|------|------|----|----|
| Def. 6-0  | 19/40 | 5/15 | 3/4 | 5/9  | 1    | 0  | 0  |
| Fastbreak | 3/4   |      |     |      | 0    | 0  | 4  |

### Attack with superiority / minority / goalkeeper out

|                 | Attack |      |       |    | Reaction |     |      |
|-----------------|--------|------|-------|----|----------|-----|------|
|                 | Att.   | Eff. | Shots | TF | FB       | LD  | Tot. |
| 7 on 6 (GK out) | 2      | 100% | 2/2   | 0  | 1/1      | 0/0 | 1/1  |
| 7 on 5 (GK out) | 1      | 100% | 1/1   | 0  | 0/0      | 0/0 | 0/0  |
| 6 on 6 (GK out) | 5      | 80%  | 4/5   | 0  | 0/0      | 0/0 | 0/0  |
| 6 on 5 (GK out) | 1      | 0%   | 0/0   | 1  | 0/0      | 0/0 | 0/0  |
| 6 on 6          | 54     | 65%  | 35/44 | 10 |          |     |      |
| 6 on 5          | 3      | 67%  | 2/3   | 0  |          |     |      |
| 5 on 6          | 2      | 100% | 2/2   | 0  |          |     |      |

Player superiority / GK out counted at the end of attack (in case it changes during attack)

### Defense with superiority / minority / goalkeeper out

|                 | Attack |      |       |    | Reaction |     |      |
|-----------------|--------|------|-------|----|----------|-----|------|
|                 | Att.   | Eff. | Shots | TF | FB       | LD  | Tot. |
| 7 on 6 (GK out) | 14     | 50%  | 7/13  | 1  | 1/2      | 0/0 | 1/2  |
| 6 on 6 (GK out) | 2      | 0%   | 0/2   | 0  | 1/1      | 0/0 | 1/1  |
| 6 on 6          | 46     | 39%  | 18/29 | 17 |          |     |      |
| 7 on 5 (GK out) | 1      | 0%   | 0/0   | 1  | 1/1      | 0/0 | 1/1  |
| 6 on 5 (GK out) | 1      | 100% | 1/1   | 0  | 0/0      | 0/0 | 0/0  |
| 6 on 5          | 5      | 40%  | 2/3   | 2  |          |     |      |

Numbers show attacking numbers of opponent. Lower efficiency of opponent means better defense of this team

# Jersey number Tot. Total shooting 6m 6m (line) shooting 9m 9m shooting Wng Wing shooting FB Fastbreak sh. 7m 7m penalty sh.  
 Brk. Breakthrough sh. LD Long distance sh. As. Assists PC Pass clear chance E7 Earned 7m pen. TF Technical faults St. Steals  
 2m 2m punishments C7. Committed 7m E2 Earned 2m pun. YC. Yellow cards R/B Red/Blue cards Blk. Blocks S Starting Line-up



# 25th IHF Men's Junior World Championship 2025



Main Round - Group II, 1. round

## Match Team Statistics

Match No. 56

## Portugal 46 - 28 Japan

(23 - 12) (23 - 16)

23.6.2025. 18:30

Attendance: 627

Arena Sosnowiec

Referees: Mariana Garcia (ARG) / Maria Ines Paolantoni (ARG)

## Shot distribution by player

|                                      |   |                                       |                                  |  |   |   |
|--------------------------------------|---|---------------------------------------|----------------------------------|--|---|---|
| <b>4 F. Monteiro</b><br>1/1          | <b>5 G. Cavalcanti</b><br>2/2<br>1/1<br>1/1<br>1 post 3 miss. | <b>7 T. Teixeira</b><br>2/2<br>1/1    | <b>10 J. Ferreira</b><br>1/1 3/3 | <b>11 J. Magalhaes</b><br>1/1 3/3<br>2/2 1/1 | <b>13 R. Vasconcelos</b><br>1/1                         | <b>15 E. Costa</b><br>1/1 1/1 1/1                               |
| <b>22 G. Conceição</b><br>1/1<br>0/1 | <b>23 J. Lourenco</b><br>1/1 2/2<br>0/1<br>2/2                | <b>24 A. Mendes</b><br>0/1 3/3<br>1/2 | <b>27 F. Coelho</b><br>1/1       | <b>30 R. Brandao</b><br>1/1 lob<br>3/3       | <b>32 D. Campos</b><br>0/1 0/1<br>0/1<br>0/1<br>1/1 lob | <b>34 X. Barbosa</b><br>0/1 1/1 1/1<br>1/1<br>1/1 2/2<br>1 post |

## TOTAL

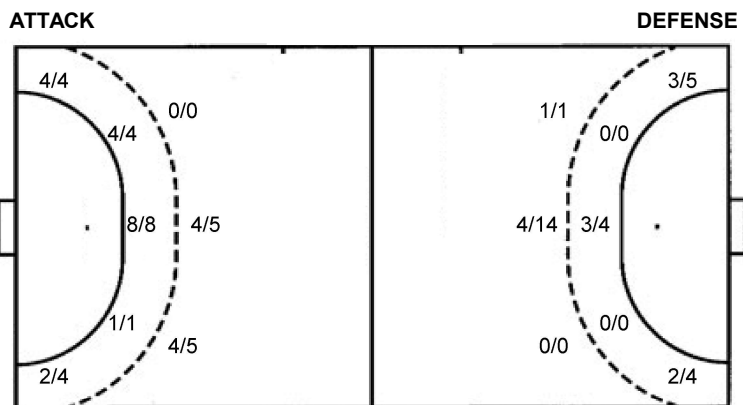
|      |     |       |
|------|-----|-------|
| 7/10 | 2/2 | 14/15 |
| 2/4  | 1/1 |       |
| 9/10 | 2/2 | 7/9   |

2 post 3 miss. 2/2 lob

## Saves distribution goalkeepers

|                                    |   |  |
|------------------------------------|---|--|
| <b>28 G. Morgado</b><br>0/3<br>0/4 | <b>33 D. Marques</b><br>2/2<br>1/2<br>1/3 1/1 3/8 | <b>TOTAL</b><br>2/5<br>1/2<br>1/7 2/2 5/14 |
|------------------------------------|---|--|

## Shots by position



7m penalties 0/1  
Fastbreak 11/16  
Breakthrough 8/12  
Long dist. 0/0

7m penalties 5/8  
Fastbreak 3/4  
Breakthrough 6/12  
Long dist. 1/1

## Shooting statistics

| Position     | Goals     | Sav.     | Miss.    | Post     | Blk.     | Total     | %         |
|--------------|-----------|----------|----------|----------|----------|-----------|-----------|
| Back (9m)    | 8         | 2        | 0        | 0        | 0        | 10        | 80        |
| Line (6m)    | 13        | 0        | 0        | 0        | 0        | 13        | 100       |
| Wing         | 6         | 2        | 0        | 0        | 0        | 8         | 75        |
| 7m penalties | 0         | 1        | 0        | 0        | 0        | 1         | 0         |
| Fastbreak    | 11        | 3        | 1        | 1        | 0        | 16        | 69        |
| Breakthrough | 8         | 1        | 2        | 1        | 0        | 12        | 67        |
| <b>Total</b> | <b>46</b> | <b>9</b> | <b>3</b> | <b>2</b> | <b>0</b> | <b>60</b> | <b>77</b> |

# Jersey number Tot. Total shooting 6m 6m (line) shooting 9m 9m shooting Wng Wing shooting FB Fastbreak sh. 7m 7m penalty sh.  
Brk. Breakthrough sh. LD Long distance sh. As. Assists PC Pass clear chance E7 Earned 7m pen. TF Technical faults St. Steals  
2m 2m punishments C7. Committed 7m E2 Earned 2m pun. YC. Yellow cards R/B Red/Blue cards Blk. Blocks S Starting Line-up

Handball statistics and livescore by Toma-soft ltd (www.toma-soft.hr)



# 25th IHF Men's Junior World Championship 2025



Main Round - Group II, 1. round

## Match Team Statistics

Match No. 56

## Portugal 46 - 28 Japan

(23 - 12) (23 - 16)

23.6.2025. 18:30

Attendance: 627

Arena Sosnowiec

Referees: Mariana Garcia (ARG) / Maria Ines Paolantoni (ARG)

### Japan

| #            | Surname and name | S | Goals / shots |     |      |     |      |     |     |      | Attack |     |    |    | Def. |    |     | Penalties |     |    | TP |    |   |       |
|--------------|------------------|---|---------------|-----|------|-----|------|-----|-----|------|--------|-----|----|----|------|----|-----|-----------|-----|----|----|----|---|-------|
|              |                  |   | Tot.          | %   | 9m   | 6m  | Wing | 7m  | FB  | Brk. | LD     | As. | PC | E7 | E2   | TF | St. | C7        | Blk | YC |    | 2m | R | B     |
| 2            | FURUKAWA Kippe   |   | 0/1           | 0   | 0/1  |     |      |     |     |      |        |     |    |    | 1    |    |     |           |     |    |    |    |   | 5:20  |
| 5            | KOZAKAI Ryo      |   | 1/1           | 100 |      | 1/1 |      |     |     |      |        |     |    |    |      |    |     |           |     |    |    |    |   | 11:35 |
| 6            | NAKAOKI Nikita   | S |               |     |      |     |      |     |     |      |        |     |    |    |      |    |     |           |     |    |    |    |   | 43:52 |
| 7            | HORI Koshiro     |   | 1/3           | 33  | 0/1  |     |      |     | 1/1 | 0/1  |        |     |    | 1  |      |    | 1   |           |     |    |    |    |   | 14:29 |
| 9            | HASEGAWA Soi     | S | 2/3           | 67  |      |     |      | 2/3 |     |      |        |     |    |    |      |    |     |           |     |    |    |    |   | 49:16 |
| 10           | FUJIKAWA Jun     |   | 3/5           | 60  |      | 1/2 | 1/2  |     |     |      |        |     |    |    |      | 1  |     |           |     |    | 1  |    |   | 42:25 |
| 12           | KOMODA Ryo       | S |               |     |      |     |      |     |     |      |        |     |    |    |      |    |     |           |     |    |    |    |   | 38:00 |
| 13           | TACHIBANA Kotaro | S | 2/4           | 50  |      |     |      | 2/3 |     | 0/1  |        |     |    |    |      |    | 1   |           |     |    |    |    |   | 36:04 |
| 14           | MATSUOKA Ryota   |   | 0/1           | 0   |      |     | 0/1  |     |     |      |        |     |    |    |      |    |     |           |     |    | 1  |    |   | 8:58  |
| 17           | TOCHIO Tasuku    |   | 2/5           | 40  | 1/3  |     |      |     |     | 1/2  |        | 2   | 3  | 1  |      | 7  |     |           |     |    |    |    |   | 27:47 |
| 19           | INOUE Takuto     | S | 2/3           | 67  | 1/2  |     |      |     |     | 1/1  |        | 2   |    | 2  | 3    | 5  |     |           |     |    |    |    |   | 48:15 |
| 21           | NAGAMORI Haruto  | S | 10/15         | 67  | 2/3  |     |      | 2/4 | 2/2 | 4/6  |        | 2   |    | 2  |      | 3  | 1   |           |     |    |    |    |   | 43:40 |
| 23           | KAWADA Haruki    | S | 4/9           | 44  | 1/4  |     |      | 3/4 |     | 0/1  |        |     |    |    |      | 1  |     |           |     |    |    |    |   | 10:33 |
| 30           | YAMAZAKI Aoto    |   |               |     |      |     |      |     |     |      |        |     |    |    |      |    |     |           |     |    |    |    |   | 15:55 |
| 31           | NAKAJIMA Daichi  |   | 1/1           | 100 |      | 1/1 |      |     |     |      |        |     |    | 1  |      |    |     |           |     |    |    |    |   | 18:25 |
| 32           | TAKESHITA Hayato |   | 0/2           | 0   | 0/1  |     |      |     |     | 0/1  |        | 1   |    | 1  |      | 3  |     |           |     |    |    |    |   | 5:26  |
| Team / bench |                  |   |               |     |      |     |      |     |     |      |        |     |    |    |      |    |     |           |     |    |    |    |   |       |
| TOTAL        |                  |   | 28/53         | 53  | 5/15 | 3/4 | 5/9  | 5/8 | 3/4 | 6/12 | 1/1    | 7   | 3  | 8  | 3    | 21 | 3   | 0         | 0   | 0  | 2  | 0  | 0 |       |

| #     | Surname and name | Saves / shots |    |      |      |      |     |      |      |     |
|-------|------------------|---------------|----|------|------|------|-----|------|------|-----|
|       |                  | Tot.          | %  | 9m   | 6m   | Wing | 7m  | FB   | Brk. | LD  |
| 12    | KOMODA Ryo       | 7/35          | 20 | 2/7  | 0/7  | 2/7  | 1/1 | 2/11 | 0/2  |     |
| 30    | YAMAZAKI Aoto    | 2/17          | 12 | 0/3  | 0/5  | 0/1  |     | 1/1  | 1/7  |     |
| TOTAL |                  | 9/52          | 17 | 2/10 | 0/12 | 2/8  | 1/1 | 4/12 | 1/9  | 0/0 |

Coach: Kenji Toyoda

Number of attacks: 69, Efficiency: 41%, Average Duration: 29.45 seconds

### Attack by type of defense

|             | Shots | 9m   | 6m  | Wing | TF | E7 | E2 |
|-------------|-------|------|-----|------|----|----|----|
| On def. 6-0 | 19/40 | 5/15 | 3/4 | 5/9  | 21 | 8  | 3  |
| Fastbreak   | 3/4   |      |     |      | 0  | 0  | 0  |

### Defense by type

|           | Total | 9m   | 6m    | Wing | Stl. | C7 | 2m |
|-----------|-------|------|-------|------|------|----|----|
| Def. 6-0  | 35/43 | 8/10 | 13/13 | 6/8  | 3    | 0  | 0  |
| Fastbreak | 11/16 |      |       |      | 0    | 0  | 2  |

### Attack with superiority / minority / goalkeeper out

|                 | Attack |      |       |    | Reaction |     |      |
|-----------------|--------|------|-------|----|----------|-----|------|
|                 | Att.   | Eff. | Shots | TF | FB       | LD  | Tot. |
| 7 on 6 (GK out) | 14     | 50%  | 7/13  | 1  | 1/2      | 0/0 | 1/2  |
| 6 on 6 (GK out) | 2      | 0%   | 0/2   | 0  | 1/1      | 0/0 | 1/1  |
| 6 on 6          | 46     | 39%  | 18/29 | 17 |          |     |      |
| 7 on 5 (GK out) | 1      | 0%   | 0/0   | 1  | 1/1      | 0/0 | 1/1  |
| 6 on 5 (GK out) | 1      | 100% | 1/1   | 0  | 0/0      | 0/0 | 0/0  |
| 6 on 5          | 5      | 40%  | 2/3   | 2  |          |     |      |

Player superiority / GK out counted at the end of attack (in case it changes during attack)

### Defense with superiority / minority / goalkeeper out

|                 | Attack |      |       |    | Reaction |     |      |
|-----------------|--------|------|-------|----|----------|-----|------|
|                 | Att.   | Eff. | Shots | TF | FB       | LD  | Tot. |
| 7 on 6 (GK out) | 2      | 100% | 2/2   | 0  | 1/1      | 0/0 | 1/1  |
| 7 on 5 (GK out) | 1      | 100% | 1/1   | 0  | 0/0      | 0/0 | 0/0  |
| 6 on 6 (GK out) | 5      | 80%  | 4/5   | 0  | 0/0      | 0/0 | 0/0  |
| 6 on 5 (GK out) | 1      | 0%   | 0/0   | 1  | 0/0      | 0/0 | 0/0  |
| 6 on 6          | 54     | 65%  | 35/44 | 10 |          |     |      |
| 6 on 5          | 3      | 67%  | 2/3   | 0  |          |     |      |
| 5 on 6          | 2      | 100% | 2/2   | 0  |          |     |      |

Numbers show attacking numbers of opponent. Lower efficiency of opponent means better defense of this team

# Jersey number Tot. Total shooting 6m 6m (line) shooting 9m 9m shooting Wng Wing shooting FB Fastbreak sh. 7m 7m penalty sh.  
 Brk. Breakthrough sh. LD Long distance sh. As. Assists PC Pass clear chance E7 Earned 7m pen. TF Technical faults St. Steals  
 2m 2m punishments C7. Committed 7m E2 Earned 2m pun. YC. Yellow cards R/B Red/Blue cards Blk. Blocks S Starting Line-up



# 25th IHF Men's Junior World Championship 2025



Main Round - Group II, 1. round

## Match Team Statistics

Match No. 56

## Portugal 46 - 28 Japan

(23 - 12) (23 - 16)

23.6.2025. 18:30

Attendance: 627

Arena Sosnowiec

Referees: Mariana Garcia (ARG) / Maria Ines Paolantoni (ARG)

## Shot distribution by player

2 K. Furukawa

|     |  |  |
|-----|--|--|
|     |  |  |
|     |  |  |
| 0/1 |  |  |

5 R. Kozakai

|     |  |  |
|-----|--|--|
| 1/1 |  |  |
|     |  |  |
|     |  |  |

6 N. Nakaoki

|  |  |  |
|--|--|--|
|  |  |  |
|  |  |  |
|  |  |  |

7 K. Hori

|  |  |     |
|--|--|-----|
|  |  | 0/1 |
|  |  |     |
|  |  | 1/1 |

1 block

9 S. Hasegawa

|     |  |     |
|-----|--|-----|
|     |  |     |
|     |  | 0/1 |
| 1/1 |  |     |

1/1 lob

10 J. Fujikawa

|     |     |     |
|-----|-----|-----|
| 1/1 |     | 1/1 |
|     | 1/1 |     |
|     |     | 0/2 |

13 K. Tachibana

|     |  |     |
|-----|--|-----|
| 0/1 |  | 1/2 |
|     |  |     |
|     |  |     |

1/1 lob

14 R. Matsuoka

|     |  |  |
|-----|--|--|
| 0/1 |  |  |
|     |  |  |
|     |  |  |

17 T. Tochio

|  |  |     |
|--|--|-----|
|  |  | 1/1 |
|  |  |     |
|  |  | 1/2 |

1 miss. 1 block

19 T. Inoue

|     |     |  |
|-----|-----|--|
|     |     |  |
|     |     |  |
| 0/1 | 2/2 |  |

21 H. Nagamori

|     |  |     |
|-----|--|-----|
| 1/1 |  | 2/2 |
|     |  |     |
| 3/3 |  | 4/5 |

3 post 1 block

23 H. Kawada

|     |     |     |
|-----|-----|-----|
|     |     |     |
|     |     | 1/1 |
| 2/2 | 0/1 | 1/2 |

1 post 1 miss. 1 block

31 D. Nakajima

|  |  |  |
|--|--|--|
|  |  |  |
|  |  |  |
|  |  |  |

1/1 lob

32 H. Takeshita

|  |  |  |
|--|--|--|
|  |  |  |
|  |  |  |
|  |  |  |

1 miss. 1 block

## TOTAL

|     |     |      |
|-----|-----|------|
| 3/5 |     | 5/7  |
|     | 1/1 | 1/2  |
| 6/7 | 0/2 | 9/14 |

4 post 3 miss. 5 block 3/3 lob

## Saves distribution goalkeepers

12 R. Komoda

|     |     |      |
|-----|-----|------|
| 1/5 | 0/1 | 1/11 |
| 2/3 |     |      |
| 1/6 | 0/2 | 2/7  |

30 A. Yamazaki

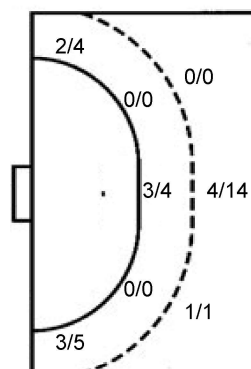
|     |  |     |
|-----|--|-----|
| 2/5 |  | 0/3 |
| 0/1 |  |     |
| 0/4 |  | 0/2 |

## TOTAL

|      |     |      |
|------|-----|------|
| 3/10 | 0/1 | 1/14 |
| 2/4  |     |      |
| 1/10 | 0/2 | 2/9  |

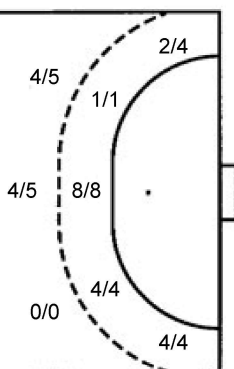
## Shots by position

### ATTACK



7m penalties 5/8  
Fastbreak 3/4  
Breakthrough 6/12  
Long dist. 1/1

### DEFENSE



7m penalties 0/1  
Fastbreak 11/16  
Breakthrough 8/12  
Long dist. 0/0

## Shooting statistics

| Position     | Goals     | Sav.      | Miss.    | Post     | Blk.     | Total     | %         |
|--------------|-----------|-----------|----------|----------|----------|-----------|-----------|
| Back (9m)    | 5         | 3         | 1        | 1        | 5        | 15        | 33        |
| Line (6m)    | 3         | 1         | 0        | 0        | 0        | 4         | 75        |
| Wing         | 5         | 4         | 0        | 0        | 0        | 9         | 56        |
| 7m penalties | 5         | 2         | 0        | 1        | 0        | 8         | 63        |
| Fastbreak    | 3         | 1         | 0        | 0        | 0        | 4         | 75        |
| Breakthrough | 6         | 2         | 2        | 2        | 0        | 12        | 50        |
| <b>Total</b> | <b>27</b> | <b>13</b> | <b>3</b> | <b>4</b> | <b>5</b> | <b>52</b> | <b>52</b> |

# Jersey number Tot. Total shooting 6m 6m (line) shooting 9m 9m shooting Wng Wing shooting FB Fastbreak sh. 7m 7m penalty sh.  
Brk. Breakthrough sh. LD Long distance sh. As. Assists PC Pass clear chance E7 Earned 7m pen. TF Technical faults St. Steals  
2m 2m punishments C7. Committed 7m E2 Earned 2m pun. YC. Yellow cards R/B Red/Blue cards Blk. Blocks S Starting Line-up

Handball statistics and livescore by Toma-soft ltd (www.toma-soft.hr)



# 25th IHF Men's Junior World Championship 2025



Main Round - Group II, 1. round

## Match Team Statistics

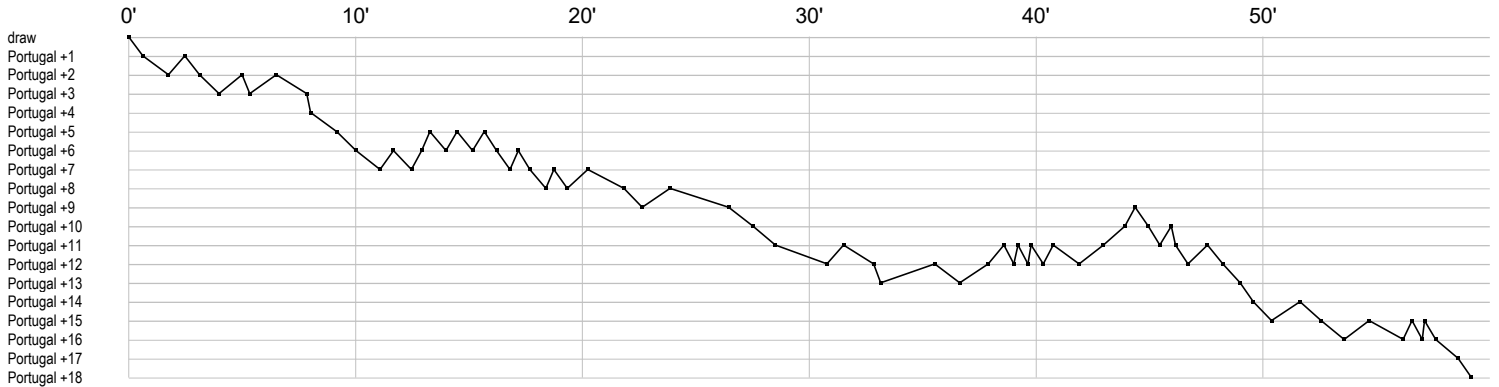
Match No. 56

## Portugal 46 - 28 Japan

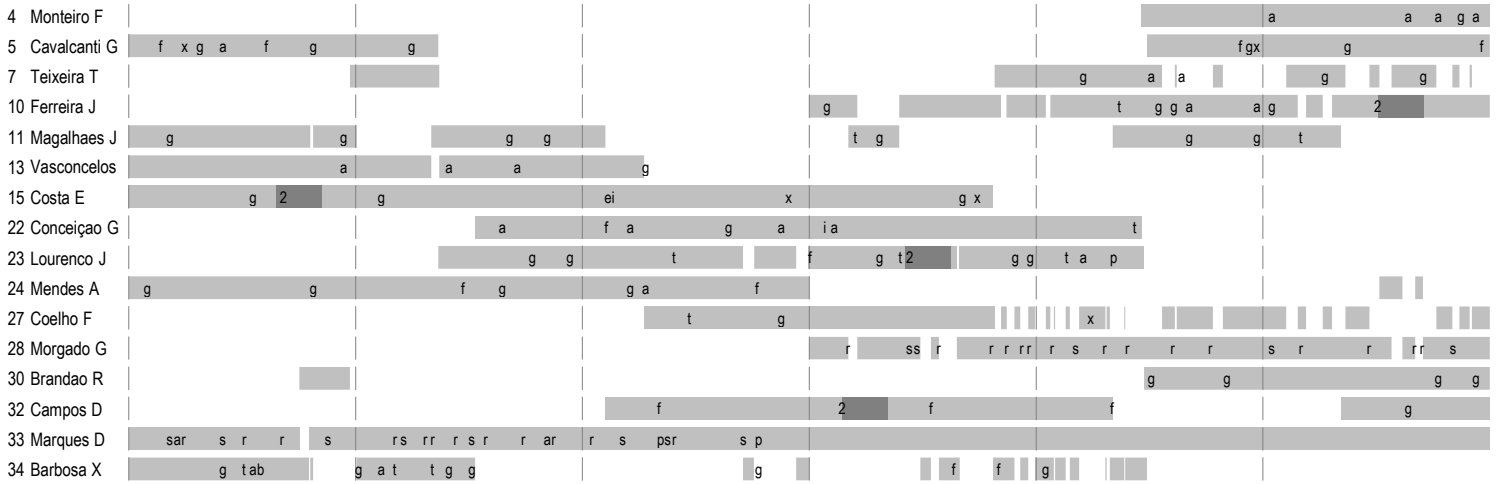
(23 - 12) (23 - 16)

23.6.2025. 18:30  
Attendance: 627  
Arena Sosnowiec

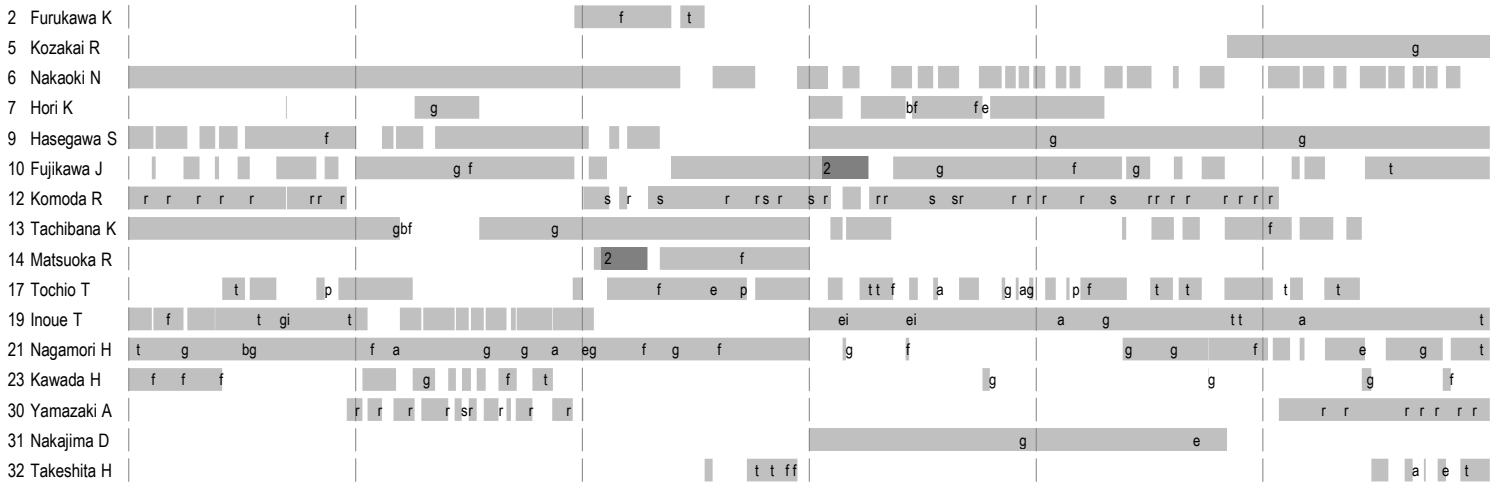
Referees: Mariana Garcia (ARG) / Maria Ines Paolantoni (ARG)



### Portugal



### Japan



|                          |                      |                          |                                |                           |                        |
|--------------------------|----------------------|--------------------------|--------------------------------|---------------------------|------------------------|
| In game                  | <b>g</b> Goal scored | <b>f</b> Missed shot     | <b>a</b> Assist                | <b>t</b> Technical faults | <b>b</b> Steal         |
| <b>2</b> 2min suspension | <b>e</b> Earned 7m   | <b>c</b> Committed 7m    | <b>y</b> Yellow card           | <b>r</b> Red Card         | <b>k</b> Blue card     |
| <b>i</b> Earned 2min.    | <b>x</b> Block       | <b>4</b> 4min suspension | <b>p</b> Pass for clear chance | <b>s</b> Saved shot       | <b>r</b> Received goal |