



29th IHF Men's World Championship 2025

Croatia • Denmark • Norway

Final Round, Quarterfinals



Match Team Statistics

Match No. 97

France 34 - 33 Egypt

(18 - 14) (16 - 19)

28.1.2025. 21:00

Attendance: 5850

Arena Zagreb

Referees: Gjorgji Nachevski (MKD) / Slave Nikolov (MKD)

France

| Players | | Goals / shots | | | | | | | | | Attack | | | | Def. | | | Penalties | | | TP | | | | |
|---------|--------------------|---------------|-------|-----|-------|-----|------|-----|-----|-------|--------|-----|----|----|------|----|-----|-----------|-----|----|----|----|---|---|-------|
| # | Surname and name | S | Tot. | % | 9m | 6m | Wing | 7m | FB | Brk. | LD | As. | PC | E7 | E2 | TF | St. | C7 | Blk | YC | | 2m | R | B | |
| 4 | MINNE Aymeric | | 5/5 | 100 | 2/2 | | | | | 2/2 | 1/1 | 2 | | 1 | 2 | 2 | | | | | | | | | 15:51 |
| 5 | REMILI Nedim | | 6/9 | 67 | 3/4 | | | | 0/1 | 3/4 | | 2 | | 1 | | 1 | 3 | | | | | | | | 32:18 |
| 6 | BOS Julien | | 2/2 | 100 | | 1/1 | 1/1 | | | | | | | | | | | | | | | | | | 28:08 |
| 8 | PRANDI Elohim | | 1/3 | 33 | 1/3 | | | | | | | | | | | 2 | | | | | | | | | 16:53 |
| 9 | RICHARDSON Melvyn | | 3/3 | 100 | 1/1 | | | 2/2 | | | | 1 | | | | | 1 | | | | | | | | 9:02 |
| 10 | MEM Dika | S | 6/9 | 67 | 4/7 | | | | | 2/2 | | | | | | | 1 | | | | | | | | 38:00 |
| 11 | TOURNAT Nicolas | | 1/1 | 100 | | 1/1 | | | | | | | | | | | | | | | | | | | 12:19 |
| 15 | GREBILLE Mathieu | | | | | | | | | | | | | | | | | | | | | | | | 13:36 |
| 16 | BOLZINGER Charles | | | | | | | | | | | | | | | | | | | | | | | | 0:03 |
| 22 | KARABATIC Luka | S | 1/1 | 100 | | | | | | | 1/1 | | | | | | | 1 | | 1 | | | | | 28:35 |
| 23 | FABREGAS Ludovic | | 3/3 | 100 | | 2/2 | | | | 1/1 | | | | | | 1 | | | 1 | | | | | | 21:58 |
| 29 | KOUNKOU D Benoît | S | 1/1 | 100 | | | 1/1 | | | | | | | | | | | | | | | | | | 30:00 |
| 31 | NAHI Dylan | S | 1/3 | 33 | | | 0/1 | | 0/1 | 1/1 | | | | | | | | | | | | | | | 42:05 |
| 34 | KONAN Karl-Olivier | S | | | | | | | | | | | | | | | | 2 | 5 | | 3 | | | | 33:14 |
| 39 | BRIET Thibaud | S | 4/7 | 57 | 1/3 | | | | | 3/4 | | 1 | 1 | | | 3 | | | 1 | | | | | | 41:16 |
| 92 | DESBONNET Rémi | S | | | | | | | | | | | 1 | | | | | | | | | | | | 56:42 |
| | Team / bench | | | | | | | | | | | | | | | | | | | | | | | | |
| | UKUPNO | | 34/47 | 72 | 12/20 | 4/4 | 2/3 | 2/2 | 0/2 | 12/14 | 2/2 | 6 | 2 | 2 | 2 | 11 | 3 | 3 | 7 | 1 | 3 | 0 | 0 | | |

| Goalkeepers | | Saves / shots | | | | | | | | |
|-------------|-------------------|---------------|----|------|-----|------|-----|-----|------|-----|
| # | Surname and name | Tot. | % | 9m | 6m | Wing | 7m | FB | Brk. | LD |
| 16 | BOLZINGER Charles | 0/1 | 0 | | | | 0/1 | | | |
| 92 | DESBONNET Rémi | 12/43 | 28 | 8/21 | 2/6 | 1/4 | 1/3 | 0/2 | 0/7 | |
| | TOTAL | 12/44 | 27 | 8/21 | 2/6 | 1/4 | 1/4 | 0/2 | 0/7 | 0/0 |

Coach: Guillaume Gille

Number of attacks: 57, Efficiency: 60%, Average Duration: 26.37 seconds

Attack by type of defense

| | Shots | 9m | 6m | Wing | TF | E7 | E2 |
|-------------|-------|-------|-----|------|----|----|----|
| On def. 6-0 | 30/41 | 12/20 | 4/4 | 2/3 | 11 | 2 | 2 |
| Fastbreak | 0/2 | | | | 0 | 0 | 0 |

Defense by type

| | Total | 9m | 6m | Wing | Stl. | C7 | 2m |
|-----------|-------|-------|-----|------|------|----|----|
| Def. 6-0 | 27/48 | 13/30 | 4/7 | 3/4 | 3 | 3 | 0 |
| Fastbreak | 3/3 | | | | 0 | 0 | 3 |

Attack with superiority / minority / goalkeeper out

| | Attack | | | | Reaction | | |
|-----------------|--------|------|-------|----|----------|-----|------|
| | Att. | Eff. | Shots | TF | FB | LD | Tot. |
| 6 on 6 (GK out) | 3 | 67% | 2/2 | 1 | 1/1 | 0/0 | 1/1 |
| 6 on 6 | 50 | 58% | 29/40 | 10 | | | |
| 6 on 5 | 4 | 75% | 3/4 | 0 | | | |

Player superiority / GK out counted at the end of attack (in case it changes during attack)

Defense with superiority / minority / goalkeeper out

| | Attack | | | | Reaction | | |
|-----------------|--------|------|-------|----|----------|-----|------|
| | Att. | Eff. | Shots | TF | FB | LD | Tot. |
| 7 on 6 (GK out) | 13 | 85% | 11/12 | 1 | 0/0 | 2/2 | 2/2 |
| 6 on 6 (GK out) | 2 | 50% | 1/2 | 0 | 0/0 | 0/0 | 0/0 |
| 6 on 6 | 36 | 47% | 17/28 | 8 | | | |
| 6 on 5 | 5 | 80% | 4/4 | 1 | | | |

Numbers show attacking numbers of opponent. Lower efficiency of opponent means better defense of this team

Jersey number Tot. Total shooting 6m 6m (line) shooting 9m 9m shooting Wng Wing shooting FB Fastbreak sh. 7m 7m penalty sh.
 Brk. Breakthrough sh. LD Long distance sh. As. Assists PC Pass clear chance E7 Earned 7m pen. TF Technical faults St. Steals
 2m 2m punishments C7. Committed 7m E2 Earned 2m pun. YC. Yellow cards R/B Red/Blue cards Blk. Blocks S Starting Line-up

Handball statistics and livescore by Toma-soft ltd (www.toma-soft.hr)



29th IHF Men's World Championship 2025

Croatia • Denmark • Norway

Final Round, Quarterfinals



Match Team Statistics

Match No. 97

France 34 - 33 Egypt

(18 - 14) (16 - 19)

28.1.2025. 21:00

Attendance: 5850

Arena Zagreb

Referees: Gjorgji Nachevski (MKD) / Slave Nikolov (MKD)

Shot distribution by player

| | | | | | | |
|--|--|--|---|------------------------------|---|---|
| 5 Y. Omar 1/2 0/1 2/3 0/1 0/1 1/1 2/2 0/1 1 block | 7 S. Hany | 10 A. Abdou 1/1 | 15 A. Hesham 1/1 2/2 2/3 2/2 1/2 1 miss. 4 block | 17 A. Khairi | 24 I. Elmasry | 45 S. Elderaa 2/2 2/2 0/1 1/1 |
| 53 A. Yousri | 55 M. Ramadan 2/2 1 block | 74 Y. Abdelwahed 1/1 1/1 1 miss. | 79 A. Nafea 2/2 1/1 1/1 | 80 A. Adel 1/1 1/2 | 90 A. Zein 1/2 1 miss. 1 block | 91 M. Sanad 0/1 1/1 1/1 |

TOTAL

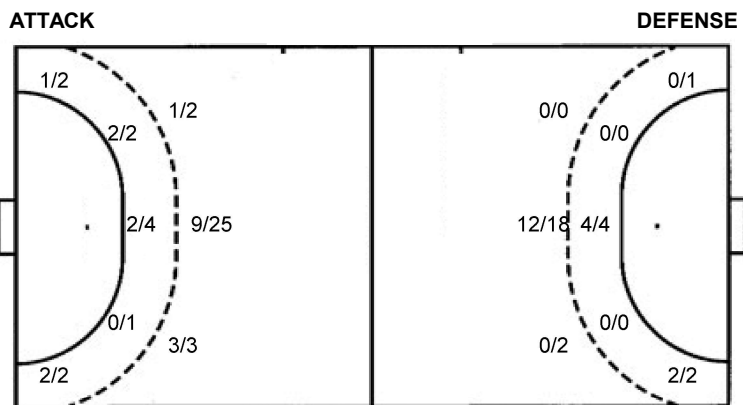
| | | |
|-----|-----|-----|
| 7/8 | 0/1 | 7/8 |
| 2/3 | | 0/3 |
| 6/7 | 7/8 | 4/7 |

3 miss. 7 block

Saves distribution goalkeepers

| | | |
|--|---|---|
| 88 K. Hendawy 1/3 0/2 1/5 0/2 1/3 0/3 | 92 M. Aly 1/10 0/1 1/4 0/1 1/1 0/2 2/5 | TOTAL 2/13 0/3 2/9 2/4 2/8 |
|--|---|---|

Shots by position



| | | | |
|--------------|-----|--------------|-------|
| 7m penalties | 3/4 | 7m penalties | 2/2 |
| Fastbreak | 3/3 | Fastbreak | 0/2 |
| Breakthrough | 7/7 | Breakthrough | 12/14 |
| Long dist. | 0/0 | Long dist. | 2/2 |

Shooting statistics

| Position | Goals | Sav. | Miss. | Post | Blk. | Total | % |
|--------------|-----------|-----------|----------|----------|----------|-----------|-----------|
| Back (9m) | 13 | 8 | 2 | 0 | 7 | 30 | 43 |
| Line (6m) | 4 | 2 | 1 | 0 | 0 | 7 | 57 |
| Wing | 3 | 1 | 0 | 0 | 0 | 4 | 75 |
| 7m penalties | 3 | 1 | 0 | 0 | 0 | 4 | 75 |
| Fastbreak | 3 | 0 | 0 | 0 | 0 | 3 | 100 |
| Breakthrough | 7 | 0 | 0 | 0 | 0 | 7 | 100 |
| Total | 33 | 12 | 3 | 0 | 7 | 55 | 60 |

Jersey number Tot. Total shooting 6m 6m (line) shooting 9m 9m shooting Wng Wing shooting FB Fastbreak sh. 7m 7m penalty sh.
 Brk. Breakthrough sh. LD Long distance sh. As. Assists PC Pass clear chance E7 Earned 7m pen. TF Technical faults St. Steals
 2m 2m punishments C7. Committed 7m E2 Earned 2m pun. YC. Yellow cards R/B Red/Blue cards Blk. Blocks S Starting Line-up

