



29th IHF Men's World Championship 2025

Croatia • Denmark • Norway

Final Round, Quarterfinals



Match Team Statistics

Match No. 104

Portugal 31 - 30 Germany

(13 - 9) (13 - 17) (OT1: 5 - 4)

29.1.2025. 20:30

Attendance: 7475

Unity Arena

Referees: Lars Jorum (NOR) / Havard Kleven (NOR)

Portugal

Players		Goals / shots										Attack					Def.			Penalties				TP	
#	Surname and name	S	Tot.	%	9m	6m	Wing	7m	FB	Brk.	LD	As.	PC	E7	E2	TF	St.	C7	Blk	YC	2m	R	B		
4	PORTELA Pedro		4/7	57			2/3	2/3	0/1						1			1							37:59
8	ITURRIZA ALVAREZ Victor	S	7/8	88		7/8								1			4	2							60:24
14	SILVA Rui	S	1/4	25	1/3					0/1			5	2			2								38:06
16	MARQUES Diogo	S																							42:40
21	FERNANDES Leonel	S	1/2	50			1/1		0/1																57:41
23	BRANQUINHO Diogo																								9:18
25	AREIA António	S	2/4	50			0/1	2/3							1										20:16
26	COSTA Francisco	S	8/15	53	2/7			1/1	0/2	5/5		4	2	1	3	2	1	1							57:22
31	SALVADOR Salvador		2/3	67	1/2					1/1		3	2			1	4	2							45:01
41	CAPDEVILLE Gustavo																								23:26
66	GOMES Joao																								0:34
79	COSTA Martim	S	4/12	33	3/7					1/5				3	1	2		2					1		38:01
80	OLIVEIRA Miguel																								
82	FRADE Luis		2/2	100							2/2		1	1										1	23:05
86	BRANDAO Ricardo																								1:14
88	MAGALHAES Fábio											1													34:53
	Team / bench																								1 1
	TOTAL		31/57	54	7/19	7/8	3/5	5/7	0/4	7/12	2/2	13	8	7	4	11	4	7	2	1	4	1	0		

Goalkeepers		Saves / shots									
#	Surname and name	Tot.	%	9m	6m	Wing	7m	FB	Brk.	LD	
16	MARQUES Diogo	7/24	29	6/12	0/3		0/2	0/3	1/4		
41	CAPDEVILLE Gustavo	5/18	28	4/9	0/1	0/1	0/5	1/1	0/1		
	TOTAL	12/42	29	10/21	0/4	0/1	0/7	1/4	1/5	0/0	

Coach: Paulo Pereira

Number of attacks: 60, Efficiency: 52%, Average Duration: 38.17 seconds

Attack by type of defense

	Shots	9m	6m	Wing	TF	E7	E2
On def. 6-0	24/44	7/19	7/8	3/5	11	7	4
Fastbreak	0/4				0	0	0

Defense by type

	Total	9m	6m	Wing	Stl.	C7	2m
Def. 6-0	19/33	11/23	4/5	0/0	4	6	0
Def. 5-1	1/3	0/1	0/1	1/1	0	1	0
Fastbreak	3/4				0	0	4

Attack with superiority / minority / goalkeeper out

	Attack				Reaction		
	Att.	Eff.	Shots	TF	FB	LD	Tot.
6 on 6 (GK out)	6	50%	3/4	2	0/0	0/0	0/0
5 on 6 (GK out)	1	0%	0/1	0	0/0	0/0	0/0
6 on 6	44	45%	20/36	8			
6 on 5	7	86%	6/6	1			
6 on 4	2	100%	2/2	0			

Player superiority / GK out counted at the end of attack (in case it changes during attack)

Defense with superiority / minority / goalkeeper out

	Attack				Reaction		
	Att.	Eff.	Shots	TF	FB	LD	Tot.
7 on 6 (GK out)	3	0%	0/1	2	0/1	0/0	0/1
6 on 6 (GK out)	3	67%	2/3	0	0/0	2/2	2/2
6 on 6	43	47%	20/35	8			
5 on 6	1	100%	1/1	0			
4 on 6	1	100%	1/1	0			
6 on 5	7	57%	4/4	3			
6 on 4	2	100%	2/2	0			

Numbers show attacking numbers of opponent. Lower efficiency of opponent means better defense of this team

Jersey number Tot. Total shooting 6m 6m (line) shooting 9m 9m shooting Wng Wing shooting FB Fastbreak sh. 7m 7m penalty sh.
 Brk. Breakthrough sh. LD Long distance sh. As. Assists PC Pass clear chance E7 Earned 7m pen. TF Technical faults St. Steals
 2m 2m punishments C7. Committed 7m E2 Earned 2m pun. YC. Yellow cards R/B Red/Blue cards Blk. Blocks S Starting Line-up



29th IHF Men's World Championship 2025

Croatia • Denmark • Norway

Final Round, Quarterfinals



Match Team Statistics

Match No. 104

Portugal 31 - 30 Germany

(13 - 9) (13 - 17) (OT1: 5 - 4)

29.1.2025. 20:30

Attendance: 7475

Unity Arena

Referees: Lars Jorum (NOR) / Havard Kleven (NOR)

Shot distribution by player

4 P. Portela

		1/2
1/2		1/2
		1/1

8 V. Iturriza Alvarez

1/1		
2/2	1/1	3/3

1 miss.

14 R. Silva

		0/1
	0/1	
		1/2

21 L. Fernandes

0/1		
	1/1	

23 D. Branquinho

25 A. Areia

		1/1
1/1		
0/1	0/1	

26 F. Costa

1/1		3/4
0/1	0/1	
2/3		2/2

3 block

31 S. Salvador

0/1		2/2

66 J. Gomes

79 M. Costa

1/2	0/1	
0/1		0/2
1/2		2/3

1 block

80 M. Oliveira

82 L. Frade

2/2 lob

86 R. Brandao

88 F. Magalhaes

TOTAL

2/4	0/1	7/10
3/7	0/2	1/4
5/8	2/3	9/11

1 miss. 4 block 2/2 lob

Saves distribution goalkeepers

16 D. Marques

0/1		0/3
1/1		1/3
2/5	1/7	2/4

41 G. Capdeville

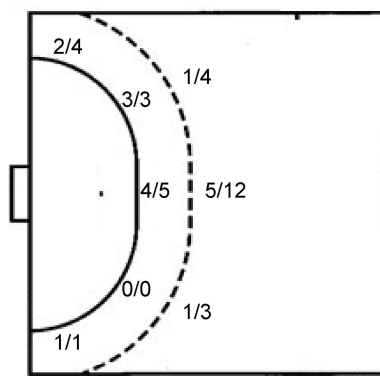
0/3		1/3
0/1		1/1
0/6		3/4

TOTAL

0/4		1/6
1/2		2/4
2/11	1/7	5/8

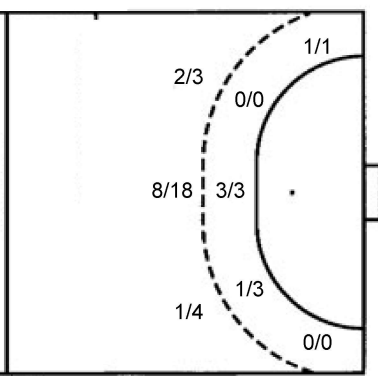
Shots by position

ATTACK



7m penalties 5/7
Fastbreak 0/4
Breakthrough 7/12
Long dist. 2/2

DEFENSE



7m penalties 7/7
Fastbreak 3/4
Breakthrough 4/5
Long dist. 0/1

Shooting statistics

Position	Goals	Sav.	Miss.	Post	Blk.	Total	%
Back (9m)	7	8	0	0	4	19	37
Line (6m)	7	0	1	0	0	8	88
Wing	3	2	0	0	0	5	60
7m penalties	5	2	0	0	0	7	71
Fastbreak	0	4	0	0	0	4	0
Breakthrough	7	5	0	0	0	12	58
Total	29	21	1	0	4	55	53

Jersey number Tot. Total shooting 6m 6m (line) shooting 9m 9m shooting Wng Wing shooting FB Fastbreak sh. 7m 7m penalty sh.
Brk. Breakthrough sh. LD Long distance sh. As. Assists PC Pass clear chance E7 Earned 7m pen. TF Technical faults St. Steals
2m 2m punishments C7. Committed 7m E2 Earned 2m pun. YC. Yellow cards R/B Red/Blue cards Blk. Blocks S Starting Line-up

Handball statistics and livescore by Toma-soft ltd (www.toma-soft.hr)

