



18th IHF Men's Club World Championship 2025



Preliminary Round - Group B, 1. round

Match Team Statistics

AI Ahly SC 41 - 14 Sydney Uni HC

26.9.2025. 20:30

Match No. 3

(20 - 6) (21 - 8)

Attendance: 1000

New Capital Sports Hall

Referees: Robert Schulze (GER) / Tobias Toennies (GER)

AI Ahly SC

#	Surname and name	S	Goals / shots									Attack					Def.			Penalties				TP						
			Tot.	%	9m	6m	Wing	7m	FB	Brk.	LD	As.	PC	E7	E2	TF	St.	C7	Blk	YC	2m	R	B							
2	SHERIF Nabil	S	3/5	60	1/3				1/1	1/1			3			2													31:49	
5	RAMADAN Mohsen	S	3/5	60	1/3	1/1							2	1															33:13	
7	EHAB Abdelaziz	S	2/5	40		0/1	1/3			1/1																			28:14	
8	HESHAM Mohamed	S	2/2	100	1/1								5	2			2												11:28	
10	EMAD Mohamed		6/7	86			2/3	2/2	1/1	1/1							2	1											27:38	
13	HANY Saif		2/6	33									1		1		2												28:27	
16	TAHA Abdelrahman	S											1																29:19	
24	EL MASRY Ibrahim		1/1	100		1/1												1						1	1				28:39	
37	KASPAREK Stanislav		1/2	50	0/1					1/1			6	1															29:15	
44	AZAB Moaz		1/1	100		1/1									1														4:05	
48	GEBALA Tomasz	S																							2				22:25	
62	MAGDY Mohamed		3/3	100	3/3								2												1				26:51	
72	SAIFELDEEN Yasser		4/6	67		4/5			0/1								1	1		1									28:31	
97	IBRAHIM Mohamed																1												30:00	
98	HASSAN Omar	S	12/14	86		1/1	5/6	0/1	6/6				1					2											30:06	
99	AWADALLA Ahmed		1/1	100			1/1								1		2												30:00	
Team / bench																														
TOTAL			41/58	71	6/11	8/10	9/13	2/3	9/10	7/11	0/0		21	4	3	2	10	5	0	4	1	1	0	0						

#	Surname and name	Saves / shots								
		Tot.	%	9m	6m	Wing	7m	FB	Brk.	LD
16	TAHA Abdelrahman	8/14	57	6/10	1/2	1/1		0/1		
97	IBRAHIM Mohamed	9/17	53	7/9	1/4	1/2			0/2	
TOTAL		17/31	55	13/19	2/6	2/3	0/0	0/1	0/2	0/0

Coach: David Davis

Number of attacks: 63, Efficiency: 65%, Average Duration: 17.63 seconds

Attack by type of defense

	Shots	9m	6m	Wing	TF	E7	E2
On def. 6-0	29/44	6/11	8/10	9/13	10	3	2
Fastbreak	9/10				0	0	0

Defense by type

	Total	9m	6m	Wing	Stl.	C7	2m
Def. 6-0	13/39	6/25	4/7	1/4	5	0	0
Fastbreak	1/1				0	0	1

Attack with superiority / minority / goalkeeper out

	Attack				Reaction		
	Att.	Eff.	Shots	TF	FB	LD	Tot.
6 on 6 (GK out)	1	0%	0/0	1	0/0	0/0	0/0
6 on 6	57	67%	38/49	8			
6 on 5	4	50%	2/3	1			
5 on 6	1	100%	1/1	0			

Player superiority / GK out counted at the end of attack (in case it changes during attack)

Defense with superiority / minority / goalkeeper out

	Attack				Reaction		
	Att.	Eff.	Shots	TF	FB	LD	Tot.
7 on 6 (GK out)	1	100%	1/1	0	0/0	0/0	0/0
6 on 6 (GK out)	3	0%	0/0	3	0/0	0/0	0/0
6 on 6	56	21%	12/33	23			
6 on 5	3	33%	1/2	1			

Numbers show attacking numbers of opponent. Lower efficiency of opponent means better defense of this team

Jersey number Tot. Total shooting 6m 6m (line) shooting 9m 9m shooting Wng Wing shooting FB Fastbreak sh. 7m 7m penalty sh.
 Brk. Breakthrough sh. LD Long distance sh. As. Assists PC Pass clear chance E7 Earned 7m pen. TF Technical faults St. Steals
 2m 2m punishments C7. Committed 7m E2 Earned 2m pun. YC. Yellow cards R/B Red/Blue cards Blk. Blocks S Starting Line-up



18th IHF Men's Club World Championship 2025



Preliminary Round - Group B, 1. round

Match Team Statistics

Match No. 3

Al Ahly SC 41 - 14 Sydney Uni HC

(20 - 6) (21 - 8)

26.9.2025. 20:30

Attendance: 1000

New Capital Sports Hall

Referees: Robert Schulze (GER) / Tobias Toennies (GER)

Shot distribution by player

2 N. Sherif	5 M. Ramadan	7 A. Ehab	8 M. Hesham	10 M. Emad	13 S. Hany	24 I. El Masry
1/1				1/1		
0/1	1/2	1/3		1/1	1/2	
0/1	2/2		2/2	2/2		1/1
	1 block	1 post		1 post 1/1 lob	2 post	
37 S. Kasperek	44 M. Azab	48 T. Gebala	62 M. Magdy	72 Y. Saifeleen	98 O. Hassan	99 A. Awadalla
0/1			1/1	1/1		
	1/1			1/2	1/1	
1/1			2/2	1/1	6/6	1/1
				1 miss.	1 miss. 1/1 lob	

TOTAL

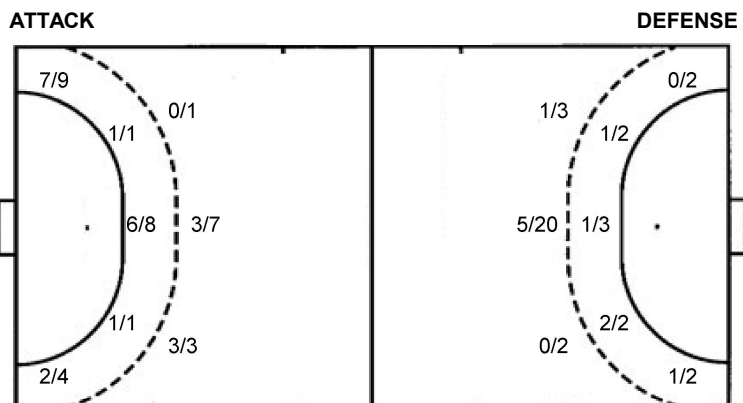
2/2		2/3
7/12	0/2	3/3
18/18	0/1	7/7

4 post 2 miss. 1 block 2/2 lob

Saves distribution goalkeepers

16 A. Taha	97 M. Ibrahim	TOTAL
1/1	1/1	2/2
1/2	2/3	3/5
1/3	0/1	1/4
2/4	0/4	2/8
2/2	1/2	2/2
		2/3
		3/4

Shots by position



7m penalties 2/3
Fastbreak 9/10
Breakthrough 7/11
Long dist. 0/0

7m penalties 0/0
Fastbreak 1/1
Breakthrough 2/3
Long dist. 0/0

Shooting statistics

Position	Goals	Sav.	Miss.	Post	Blk.	Total	%
Back (9m)	6	4	0	0	1	11	55
Line (6m)	8	1	1	0	0	10	80
Wing	9	1	1	2	0	13	69
7m penalties	2	1	0	0	0	3	67
Fastbreak	9	1	0	0	0	10	90
Breakthrough	7	2	0	2	0	11	64
Total	41	10	2	4	1	58	71

Jersey number Tot. Total shooting 6m 6m (line) shooting 9m 9m shooting Wng Wing shooting FB Fastbreak sh. 7m 7m penalty sh.
Brk. Breakthrough sh. LD Long distance sh. As. Assists PC Pass clear chance E7 Earned 7m pen. TF Technical faults St. Steals
2m 2m punishments C7. Committed 7m E2 Earned 2m pun. YC. Yellow cards R/B Red/Blue cards Blk. Blocks S Starting Line-up

Handball statistics and livescore by Toma-soft ltd (www.toma-soft.hr)



18th IHF Men's Club World Championship 2025



Preliminary Round - Group B, 1. round

Match Team Statistics
Match No. 3

Al Ahly SC 41 - 14 Sydney Uni HC

(20 - 6) (21 - 8)

26.9.2025. 20:30
Attendance: 1000
New Capital Sports Hall

Referees: Robert Schulze (GER) / Tobias Toennies (GER)

Sydney Uni HC

Players		Goals / shots									Attack					Def.			Penalties			TP			
#	Surname and name	S	Tot.	%	9m	6m	Wing	7m	FB	Brk.	LD	As.	PC	E7	E2	TF	St.	C7	Blk	YC	2m		R	B	
1	REID Daniel Mackenzie																								28:13
2	OSBERGER SERRANO Gabriel																								
3	FALLAH Christopher																								
4	TORJUSEN Eirik		2/5	40	1/4					1/1						4	2								49:09
5	GREGORIO Icaro	S	0/2	0	0/1			0/1									1								49:35
6	COINDEVEL Alexandre	S	1/2	50				0/1		1/1				1				1							44:55
7	LANGRIDGE Sebastian		1/2	50		0/1	1/1												1						14:52
9	ARTIGUES Elliot	S	1/3	33		1/2				0/1						2		1							26:44
10	DELPIRE Louis	S	2/8	25	2/7	0/1						2	1			7									34:58
11	SULC Kyrian		1/2	50	0/1					1/1		1				6									24:44
14	CARRIERE Noe	S	1/4	25	1/4							1	1			5		1							35:09
15	CLOWES Matias																								15:11
16	SALKUCKI Tomasz	S																							29:57
18	DUARTE Edgar		0/1	0			0/1																		
19	CHERIF Seifeddine	S	2/8	25	2/8																				10:43
22	MESSERSCHMIDT Lino		3/3	100		3/3										2			1		2				55:48
	Team / bench															1									
	TOTAL		14/40	35	6/25	4/7	1/4	0/0	1/1	2/3	0/0	4	3	0	0	27	4	3	1	0	2	0	0		

Goalkeepers		Saves / shots								
#	Surname and name	Tot.	%	9m	6m	Wing	7m	FB	Brk.	LD
1	REID Daniel Mackenzie	5/26	19	3/7	0/7	0/3	0/2	0/1	2/6	
16	SALKUCKI Tomasz	4/24	17	1/3	1/2	1/7		1/9	0/3	
	TOTAL	9/50	18	4/10	1/9	1/10	0/2	1/10	2/9	0/0

Coach: **Christoph Scholl**

Number of attacks: 63, Efficiency: 22%, Average Duration: 39.35 seconds

Attack by type of defense

	Shots	9m	6m	Wing	TF	E7	E2
On def. 6-0	13/39	6/25	4/7	1/4	27	0	0
Fastbreak	1/1				0	0	0

Defense by type

	Total	9m	6m	Wing	Stl.	C7	2m
Def. 6-0	29/44	6/11	8/10	9/13	4	3	0
Fastbreak	9/10				0	0	2

Attack with superiority / minority / goalkeeper out

	Attack				Reaction		
	Att.	Eff.	Shots	TF	FB	LD	Tot.
7 on 6 (GK out)	1	100%	1/1	0	0/0	0/0	0/0
6 on 6 (GK out)	3	0%	0/0	3	0/0	0/0	0/0
6 on 6	56	21%	12/33	23			
6 on 5	3	33%	1/2	1			

Player superiority / GK out counted at the end of attack (in case it changes during attack)

Defense with superiority / minority / goalkeeper out

	Attack				Reaction		
	Att.	Eff.	Shots	TF	FB	LD	Tot.
6 on 6 (GK out)	1	0%	0/0	1	0/0	0/0	0/0
6 on 6	57	67%	38/49	8			
6 on 5	4	50%	2/3	1			
5 on 6	1	100%	1/1	0			

Numbers show attacking numbers of opponent. Lower efficiency of opponent means better defense of this team

Jersey number Tot. Total shooting 6m 6m (line) shooting 9m 9m shooting Wng Wing shooting FB Fastbreak sh. 7m 7m penalty sh.
Brk. Breakthrough sh. LD Long distance sh. As. Assists PC Pass clear chance E7 Earned 7m pen. TF Technical faults St. Steals
2m 2m punishments C7. Committed 7m E2 Earned 2m pun. YC. Yellow cards R/B Red/Blue cards Blk. Blocks S Starting Line-up

Handball statistics and livescore by Toma-soft ltd (www.toma-soft.hr)



18th IHF Men's Club World Championship 2025



Preliminary Round - Group B, 1. round

Match Team Statistics

Match No. 3

Al Ahly SC 41 - 14 Sydney Uni HC

(20 - 6) (21 - 8)

26.9.2025. 20:30

Attendance: 1000

New Capital Sports Hall

Referees: Robert Schulze (GER) / Tobias Toennies (GER)

Shot distribution by player

2 G. Osberger Serrano

3 C. Fallah

4 E. Torjusen

1/1		0/1
	1/3	

5 I. Gregorio

	0/1	0/1

6 A. Coindevel

	0/1	
1/1		

7 S. Langridge

	1/1	

1 post

9 E. Artigues

0/1		
	1/1	

1 miss.

10 L. Delpire

		0/2
0/1	0/1	
	2/2	0/1

1 miss.

11 K. Sulc

	0/1	
		1/1

14 N. Carriere

1/1		
		0/1

1 miss. 1 block

15 M. Clowes

18 E. Duarte

1 miss.

19 S. Cherif

0/1		1/1
1/2		0/1

3 block

22 L. Messerschmidt

1/1	1/1	

1/1 lob

TOTAL

	0/2	0/2
2/5	0/2	1/3
3/4	6/8	1/4

1 post 4 miss. 4 block 1/1 lob

Saves distribution goalkeepers

1 D. Reid

0/2		1/3
2/7	2/2	0/1
0/9		0/1

16 T. Salkucki

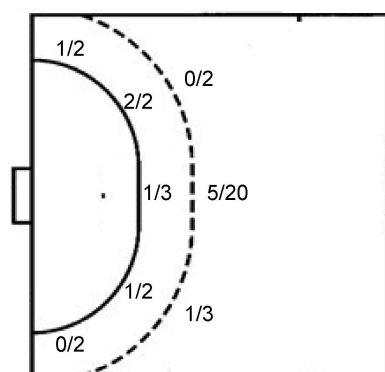
3/5		0/2
0/9	1/1	0/6

TOTAL

0/2		1/3
5/12	2/2	0/3
0/18	1/1	0/7

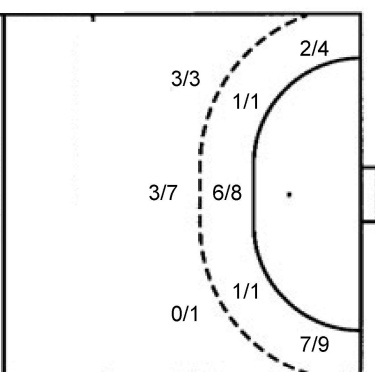
Shots by position

ATTACK



7m penalties	0/0
Fastbreak	1/1
Breakthrough	2/3
Long dist.	0/0

DEFENSE



7m penalties	2/3
Fastbreak	9/10
Breakthrough	7/11
Long dist.	0/0

Shooting statistics

Position	Goals	Sav.	Miss.	Post	Blk.	Total	%
Back (9m)	6	13	2	0	4	25	24
Line (6m)	4	2	0	1	0	7	57
Wing	1	2	1	0	0	4	25
7m penalties	0	0	0	0	0	0	0
Fastbreak	1	0	0	0	0	1	100
Breakthrough	2	0	1	0	0	3	67
Total	14	17	4	1	4	40	35

Jersey number Tot. Total shooting 6m 6m (line) shooting 9m 9m shooting Wng Wing shooting FB Fastbreak sh. 7m 7m penalty sh.
 Brk. Breakthrough sh. LD Long distance sh. As. Assists PC Pass clear chance E7 Earned 7m pen. TF Technical faults St. Steals
 2m 2m punishments C7. Committed 7m E2 Earned 2m pun. YC. Yellow cards R/B Red/Blue cards Blk. Blocks S Starting Line-up

