



2024 IHF Women's Olympic Qualification Tournament



Tournament 2, 2. round

Match Team Statistics
Match No. 9

Netherlands 32 - 18 Czech Republic
(18 - 6) (14 - 12)

12.4.2024. 18:30
Attendance: 1240
Palacio de los Deportes de
Torrevieja

Referees: Heidy Elsaied (EGY) / Yasmina Elsaied (EGY)

Netherlands

#	Surname and name	S	Goals / shots								Attack				Def.			Penalties				TP			
			Tot.	%	9m	6m	Wing	7m	FB	Brk.	LD	As.	PC	E7	E2	TF	St.	C7	Blk	YC	2m		R	B	
6	VAN DER HEIJDEN Laura		3/5	60	1/2					2/3														23:24	
8	ABBINGH Lois	S	0/6	0	0/5				0/1			5	2			2	2			1				56:33	
9	NÜSSER Larissa		4/7	57		0/1				4/6		4	2	1		2								17:35	
12	VAN WETERING Bo	S	7/8	88		1/1	4/5		2/2								1	1				1		38:12	
16	HAGGERTY Tamara											1					1					2		22:42	
17	MOLENAAR Catharina												1			1								2:28	
18	DULFER Kelly		1/2	50				1/1	0/1			1			2				1					20:49	
20	SMITS Inger		0/1	0	0/1																			22:49	
22	SPRENGERS Zoë		2/2	100		1/1			1/1															22:56	
26	MALESTEIN Angela	S	7/8	88			3/4	3/3	1/1			1										1		50:13	
30	DUIJNDAM Rinka																							10:11	
38	TEN HOLTE Yara	S	0/1	0							0/1	1												46:25	
44	VAN DER VLIET Nikita	S	2/2	100		1/1			1/1			1		2	2	1	1							38:18	
46	HENDRIKSE Nathalie	S																						11:25	
48	HOUSHEER Dione	S	6/13	46	3/5					3/8		3	2			1	1		1		1	1		35:26	
79	POLMAN Estavana																								
	Team / bench																								
	UKUPNO		32/55	58	4/13	3/4	7/9	3/3	6/7	9/18	0/1	15	9	3	2	9	5	2	3	1	4	0	0		

#	Surname and name	Saves / shots								
		Tot.	%	9m	6m	Wing	7m	FB	Brk.	LD
30	DUIJNDAM Rinka	4/6	67	1/1	1/1	2/2		0/2		
38	TEN HOLTE Yara	13/29	45	7/12	0/2	2/5	0/1	1/2	3/7	
	TOTAL	17/35	49	8/13	1/3	4/7	0/1	1/4	3/7	0/0

Coach: Per Johansson

Number of attacks: 60, Efficiency: 53%, Average Duration: 27.78 seconds

Attack by type of defense

	Shots	9m	6m	Wing	TF	E7	E2
On def. 6-0	23/44	4/13	3/4	7/9	9	3	2
Fastbreak	6/7				0	0	0

Defense by type

	Total	9m	6m	Wing	Stl.	C7	2m
Def. 6-0	14/42	5/22	2/3	3/10	5	2	0
Fastbreak	3/5				0	0	4

Attack with superiority / minority / goalkeeper out

	Attack				Reaction		
	Att.	Eff.	Shots	TF	FB	LD	Tot.
7 on 6 (GK out)	2	100%	2/2	0	0/0	0/0	0/0
6 on 6 (GK out)	4	75%	3/4	0	0/0	0/0	0/0
6 on 5 (GK out)	2	0%	0/2	0	0/0	0/0	0/0
6 on 6	46	50%	23/37	9			
6 on 5	6	67%	4/6	0			

Player superiority / GK out counted at the end of attack (in case it changes during attack)

Defense with superiority / minority / goalkeeper out

	Attack				Reaction		
	Att.	Eff.	Shots	TF	FB	LD	Tot.
6 on 6 (GK out)	4	25%	1/3	1	1/1	0/1	1/2
6 on 6	47	30%	14/32	15			
5 on 6	1	0%	0/0	1			
6 on 5 (GK out)	1	100%	1/1	0	0/0	0/0	0/0
6 on 5	7	29%	2/6	1			
5 on 5	1	0%	0/0	1			

Numbers show attacking numbers of opponent. Lower efficiency of opponent means better defense of this team

Jersey number Tot. Total shooting 6m 6m (line) shooting 9m 9m shooting Wng Wing shooting FB Fastbreak sh. 7m 7m penalty sh.
Brk. Breakthrough sh. LD Long distance sh. As. Assists PC Pass clear chance E7 Earned 7m pen. TF Technical faults St. Steals
2m 2m punishments C7. Committed 7m E2 Earned 2m pun. YC. Yellow cards R/B Red/Blue cards Blk. Blocks S Starting Line-up

Handball statistics and livescore by Toma-soft ltd (www.toma-soft.hr)



2024 IHF Women's Olympic Qualification Tournament



Tournament 2, 2. round

Match Team Statistics

Match No. 9

Netherlands 32 - 18 Czech Republic

(18 - 6) (14 - 12)

12.4.2024. 18:30

Attendance: 1240

Palacio de los Deportes de Torrevieja

Referees: Heidy Elsaied (EGY) / Yasmina Elsaied (EGY)

Shot distribution by player

6 L. Van Der Heijden

1/1		
1/2	0/1	1/1

8 L. Abbingh

	0/1	
0/1		0/2
	0/1	

1 post

9 L. Nüsser

		0/1
0/1		2/2
0/1	1/1	

1/1 lob

12 B. Van Wetering

1/1	0/1	1/1
1/1		
1/1	2/2	1/1

16 T. Haggerty

17 C. Molenaar

18 K. Dulfer

1/1		
		0/1

20 I. Smits

0/1		

22 Z. Sprengers

1/1		
		1/1

26 A. Malestein

		1/1
3/3	1/1	1/2

1/1 lob

44 N. Van Der Vliet

	1/1	1/1

46 N. Hendrikse

48 D. Housheer

1/2	0/1	1/2
0/2	0/1	
2/2		2/3

79 E. Polman

TOTAL

3/4	0/3	2/4
3/7	1/2	4/6
7/10	4/6	6/9

1 post 2/2 lob

Saves distribution goalkeepers

30 R. Duijndam

	2/2	
1/1		
1/1		0/2

38 Y. Ten Holte

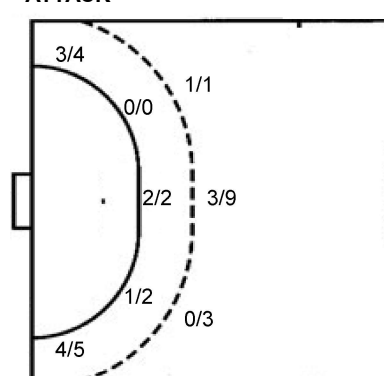
0/1	1/1	1/4
1/2		3/6
4/5	1/2	2/8

TOTAL

0/1	3/3	1/4
2/3		3/6
5/6	1/2	2/10

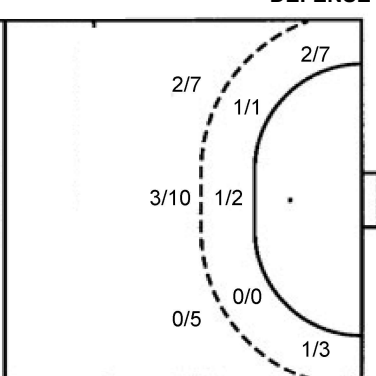
Shots by position

ATTACK



7m penalties 3/3
Fastbreak 6/7
Breakthrough 9/18
Long dist. 0/1

DEFENSE



7m penalties 1/2
Fastbreak 3/5
Breakthrough 4/7
Long dist. 0/0

Shooting statistics

Position	Goals	Sav.	Miss.	Post	Blk.	Total	%
Back (9m)	4	8	0	1	0	13	31
Line (6m)	3	1	0	0	0	4	75
Wing	7	2	0	0	0	9	78
7m penalties	3	0	0	0	0	3	100
Fastbreak	6	1	0	0	0	7	86
Breakthrough	9	9	0	0	0	18	50
Total	32	21	0	1	0	54	59

Jersey number Tot. Total shooting 6m 6m (line) shooting 9m 9m shooting Wng Wing shooting FB Fastbreak sh. 7m 7m penalty sh.
Brk. Breakthrough sh. LD Long distance sh. As. Assists PC Pass clear chance E7 Earned 7m pen. TF Technical faults St. Steals
2m 2m punishments C7. Committed 7m E2 Earned 2m pun. YC. Yellow cards R/B Red/Blue cards Blk. Blocks S Starting Line-up

Handball statistics and livescore by Toma-soft ltd (www.toma-soft.hr)



2024 IHF Women's Olympic Qualification Tournament



Tournament 2, 2. round

Match Team Statistics

Match No. 9

Netherlands 32 - 18 Czech Republic

(18 - 6) (14 - 12)

12.4.2024. 18:30

Attendance: 1240

Palacio de los Deportes de Torrevieja

Referees: Heidy Elsaied (EGY) / Yasmina Elsaied (EGY)

Czech Republic

#	Surname and name	S	Goals / shots								Attack				Def.			Penalties				TP						
			Tot.	%	9m	6m	Wing	7m	FB	Brk.	LD	As.	PC	E7	E2	TF	St.	C7	Bik	YC	2m		R	B				
9	STRÍŠKOVÁ Adéla		0/2	0			0/2																					6:25
14	KORDOVSKÁ Kamila		0/1	0					0/1							1	1	1										16:23
22	ŠUSTÁČKOVÁ Marketa	S	1/7	14	0/5					1/2		2	3					3	1									44:24
24	DESORTOVÁ Eliška		0/1	0						0/1		1	1					1							1			14:46
31	STELLNEROVÁ Alena																											5:01
32	KUXOVÁ Natálie																											3:00
33	KUDLÁČKOVÁ Petra																											22:20
34	FRANKOVÁ Julie	S	2/2	100		1/1				1/1								2		1	1							34:47
38	FRANKOVÁ Anna		0/2	0			0/2																					21:08
42	DRESSLEROVÁ Katka																	2										10:53
44	ZACHOVÁ Dominika	S	1/1	100			1/1																					38:21
48	KOVAROVÁ Sára		0/3	0	0/2					0/1										1								15:22
51	JERABKOVA Marketa	S	8/14	57	5/9	1/2		0/1		2/2		3	3		1	4								1				53:44
67	MALÁ Veronika	S	4/8	50			2/5		2/3							3									1			54:08
79	NOVOTNÁ Sabrina	S											1															33:55
96	CHOLEVOVÁ Charlotte	S	2/8	25	0/6			1/1		1/1		2	2	1		1	1	1							1			45:23
	Team / bench															1												
	UKUPNO		18/49	37	5/22	2/3	3/10	1/2	3/5	4/7	0/0	8	10	2	2	19	2	3	1	0	4	0	0					

#	Surname and name	Saves / shots								
		Tot.	%	9m	6m	Wing	7m	FB	Brk.	LD
33	KUDLÁČKOVÁ Petra	7/18	39	4/5	1/3	0/3	0/1	0/2	2/4	
79	NOVOTNÁ Sabrina	14/35	40	4/7	0/1	2/6	0/2	1/5	7/14	
	TOTAL	21/53	40	8/12	1/4	2/9	0/3	2/7	9/18	0/0

Coach: Bent Dahl

Number of attacks: 61, Efficiency: 30%, Average Duration: 31.61 seconds

Attack by type of defense

	Shots	9m	6m	Wing	TF	E7	E2
On def. 6-0	14/42	5/22	2/3	3/10	19	2	2
Fastbreak	3/5				0	0	0

Defense by type

	Total	9m	6m	Wing	Stl.	C7	2m
Def. 6-0	23/44	4/13	3/4	7/9	2	3	0
Fastbreak	6/7				0	0	4

Attack with superiority / minority / goalkeeper out

	Attack				Reaction		
	Att.	Eff.	Shots	TF	FB	LD	Tot.
6 on 6 (GK out)	4	25%	1/3	1	1/1	0/1	1/2
6 on 6	47	30%	14/32	15			
5 on 6	1	0%	0/0	1			
6 on 5 (GK out)	1	100%	1/1	0	0/0	0/0	0/0
6 on 5	7	29%	2/6	1			
5 on 5	1	0%	0/0	1			

Player superiority / GK out counted at the end of attack (in case it changes during attack)

Defense with superiority / minority / goalkeeper out

	Attack				Reaction		
	Att.	Eff.	Shots	TF	FB	LD	Tot.
7 on 6 (GK out)	2	100%	2/2	0	0/0	0/0	0/0
6 on 6 (GK out)	4	75%	3/4	0	0/0	0/0	0/0
6 on 5 (GK out)	2	0%	0/2	0	0/0	0/0	0/0
6 on 6	46	50%	23/37	9			
6 on 5	6	67%	4/6	0			

Numbers show attacking numbers of opponent. Lower efficiency of opponent means better defense of this team

Jersey number Tot. Total shooting 6m 6m (line) shooting 9m 9m shooting Wng Wing shooting FB Fastbreak sh. 7m 7m penalty sh.
 Brk. Breakthrough sh. LD Long distance sh. As. Assists PC Pass clear chance E7 Earned 7m pen. TF Technical faults St. Steals
 2m 2m punishments C7. Committed 7m E2 Earned 2m pun. YC. Yellow cards R/B Red/Blue cards Blk. Blocks S Starting Line-up

Handball statistics and livescore by Toma-soft ltd (www.toma-soft.hr)



2024 IHF Women's Olympic Qualification Tournament



Tournament 2, 2. round

Match Team Statistics
Match No. 9

Netherlands 32 - 18 Czech Republic
(18 - 6) (14 - 12)

12.4.2024. 18:30
Attendance: 1240
Palacio de los Deportes de
Torrevieja

Referees: Heidy Elsaied (EGY) / Yasmina Elsaied (EGY)

Shot distribution by player

9 A. Stříšková

0/1		

1 miss.

14 K. Kordovská

		0/1

22 M. Šustáčková

	0/1	
1/2		
0/1	0/1	

1 post 1 miss.

24 E. Desortová

		0/1

31 A. Stellnerová

32 N. Kuxová

34 J. Franková

		2/2

38 A. Franková

0/1		

1 miss.

42 K. Dresslerová

44 D. Zachova

		1/1

48 S. Kovářová

0/1		

1 post 1 block

51 M. Jerabkova

1/1	0/1	1/1
		3/3
1/2	1/1	1/1

3 post 1 miss.

67 V. Malá

		1/1
0/1		3/4

1 post 1 miss.

96 C. Cholevová

	0/1	
		0/2
		2/3

1 miss. 1 block

TOTAL

1/1	0/3	3/4
1/3		3/6
1/6	1/2	8/10

6 post 6 miss. 2 block

Saves distribution goalkeepers

33 P. Kudláčková

0/1		1/2
1/3	0/1	
3/4	2/5	0/2

79 S. Novotná

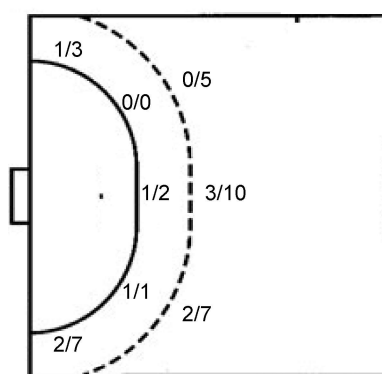
1/3	3/3	1/2
3/4	1/1	2/6
0/6	0/1	3/7

TOTAL

1/4	3/3	2/4
4/7	1/2	2/6
3/10	2/6	3/9

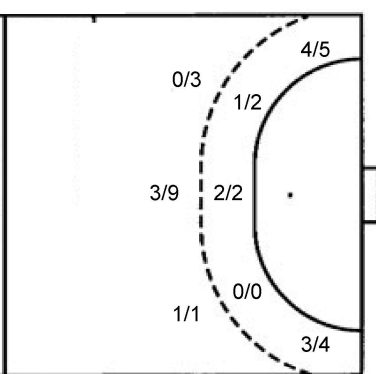
Shots by position

ATTACK



7m penalties 1/2
Fastbreak 3/5
Breakthrough 4/7
Long dist. 0/0

DEFENSE



7m penalties 3/3
Fastbreak 6/7
Breakthrough 9/18
Long dist. 0/1

Shooting statistics

Position	Goals	Sav.	Miss.	Post	Blk.	Total	%
Back (9m)	5	8	3	4	2	22	23
Line (6m)	2	1	0	0	0	3	67
Wing	3	4	2	1	0	10	30
7m penalties	1	0	0	1	0	2	50
Fastbreak	3	1	1	0	0	5	60
Breakthrough	4	3	0	0	0	7	57
Total	18	17	6	6	2	49	37

Jersey number Tot. Total shooting 6m 6m (line) shooting 9m 9m shooting Wng Wing shooting FB Fastbreak sh. 7m 7m penalty sh.
Brk. Breakthrough sh. LD Long distance sh. As. Assists PC Pass clear chance E7 Earned 7m pen. TF Technical faults St. Steals
2m 2m punishments C7. Committed 7m E2 Earned 2m pun. YC. Yellow cards R/B Red/Blue cards Blk. Blocks S Starting Line-up

Handball statistics and livescore by Toma-soft ltd (www.toma-soft.hr)

