



# 2024 IHF Women's Olympic Qualification Tournament



Tournament 2, 1. round

Match Team Statistics  
Match No. 7

**Czech Republic 21 - 31 Spain**  
(10 - 19) (11 - 12)

11.4.2024. 18:30  
Attendance: 2780  
Palacio de los Deportes de  
Torrevieja

Referees: Amar Konjicanin (BIH) / Dino Konjicanin (BIH)

## Czech Republic

#	Surname and name	S	Goals / shots								Attack					Def.			Penalties				TP				
			Tot.	%	9m	6m	Wing	7m	FB	Brk.	LD	As.	PC	E7	E2	TF	St.	C7	Blk	YC	2m	R		B			
9	STRÍŠKOVÁ Adéla		0/1	0			0/1																				18:16
14	KORDOVSKÁ Kamila																2								2		26:05
22	ŠUSTÁČKOVÁ Marketa	S	1/5	20	1/3					0/2		2	1	1	1	2											44:34
24	DESORTOVÁ Eliška	S	1/2	50	0/1					1/1					1												37:40
31	STELLNEROVÁ Alena		2/2	100		2/2																					15:27
32	KUXOVÁ Natálie		0/1	0						0/1					1	2	1								1		24:25
33	KUDLÁČKOVÁ Petra	S																									44:42
34	FRANKOVÁ Julie		2/3	67	0/1					2/2					1	5	1										31:58
38	FRANKOVÁ Anna		2/2	100		2/2											1							1		14:05	
42	DRESSLEROVÁ Katka																										
44	ZACHOVÁ Dominika		1/2	50		1/2									1												23:49
48	KOVAROVÁ Sára		2/2	100	1/1					1/1		1			1												8:43
51	JERABKOVÁ Marketa	S	2/5	40	1/4					1/1		3			5	1								1		40:01	
67	MALÁ Veronika	S	1/1	100		1/1									3												38:05
79	NOVOTNÁ Sabrina	S																									11:24
96	CHOLEVOVÁ Charlotte	S	7/8	88	4/4			1/1		2/3		1			1	3											40:23
	Team / bench																										
	UKUPNO		21/34	62	7/14	2/2	4/6	1/1	0/0	7/11	0/0	7	1	1	4	23	2	4	0	0	5	0	0				

#	Surname and name	Saves / shots								
		Tot.	%	9m	6m	Wing	7m	FB	Brk.	LD
33	KUDLÁČKOVÁ Petra	9/32	28	5/9	0/2	0/6	0/1	2/5	2/9	
79	NOVOTNÁ Sabrina	2/9	22	1/2	0/1	0/1	1/2	0/2	0/1	
	TOTAL	11/41	27	6/11	0/3	0/7	1/3	2/7	2/10	0/0

Coach: **Bent Dahl**

Number of attacks: 55, Efficiency: 38%, Average Duration: 31.16 seconds

### Attack by type of defense

	Shots	9m	6m	Wing	TF	E7	E2
On def. 6-0	20/33	7/14	2/2	4/6	23	1	4
Fastbreak	0/0				0	0	0

### Defense by type

	Total	9m	6m	Wing	Stl.	C7	2m
Def. 6-0	23/35	5/15	3/3	7/7	2	4	0
Fastbreak	5/7				0	0	5

### Attack with superiority / minority / goalkeeper out

	Attack				Reaction		
	Att.	Eff.	Shots	TF	FB	LD	Tot.
6 on 6 (GK out)	3	67%	2/2	1	0/0	1/1	1/1
6 on 5 (GK out)	3	67%	2/3	0	0/0	0/0	0/0
6 on 6	45	38%	17/26	19			
6 on 5	3	0%	0/0	3			
5 on 6	1	0%	0/1	0			

Player superiority / GK out counted at the end of attack (in case it changes during attack)

### Defense with superiority / minority / goalkeeper out

	Attack				Reaction		
	Att.	Eff.	Shots	TF	FB	LD	Tot.
7 on 6 (GK out)	1	0%	0/0	1	0/0	0/0	0/0
6 on 6 (GK out)	3	33%	1/2	1	0/0	0/0	0/0
6 on 6	42	52%	22/33	9			
6 on 5 (GK out)	2	100%	2/2	0	0/0	0/0	0/0
6 on 5	8	75%	6/8	0			

Numbers show attacking numbers of opponent. Lower efficiency of opponent means better defense of this team

# Jersey number Tot. Total shooting 6m 6m (line) shooting 9m 9m shooting Wng Wing shooting FB Fastbreak sh. 7m 7m penalty sh.  
Brk. Breakthrough sh. LD Long distance sh. As. Assists PC Pass clear chance E7 Earned 7m pen. TF Technical faults St. Steals  
2m 2m punishments C7. Committed 7m E2 Earned 2m pun. YC. Yellow cards R/B Red/Blue cards Blk. Blocks S Starting Line-up



# 2024 IHF Women's Olympic Qualification Tournament



Tournament 2, 1. round

Match Team Statistics

Match No. 7

## Czech Republic 21 - 31 Spain

(10 - 19) (11 - 12)

11.4.2024. 18:30

Attendance: 2780

Palacio de los Deportes de Torrevieja

Referees: Amar Konjicanin (BIH) / Dino Konjicanin (BIH)

### Shot distribution by player

9 A. Stříšková


1 post

14 K. Kordovská


22 M. Šustáčková

0/1		1/1
		0/1

1 post 1 block

24 E. Desortová

		1/2

31 A. Stellnerová

	1/1	
		1/1

32 N. Kuxová

		0/1

34 J. Franková

		2/2

1 post

38 A. Franková

1/1		1/1

42 K. Dresslerová


44 D. Zachova

		0/1

1/1 lob

48 S. Kovářová

2/2		

51 M. Jerabkova

1/1		
0/1	0/1	
	1/1	

1 block

67 V. Malá

		1/1

96 C. Cholevová

1/1		2/2
		2/2
		2/3

### TOTAL

3/3	1/1	4/4
2/4	0/1	7/9
	1/1	2/5

3 post 2 block 1/1 lob

### Saves distribution goalkeepers

33 P. Kudláčková

0/2		0/5
0/4	0/1	4/11
0/2	2/2	1/1

79 S. Novotná

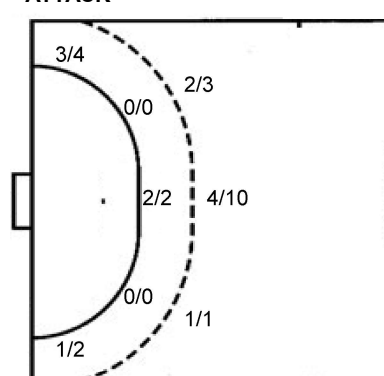
0/2		1/3
	0/1	0/2
	1/1	

TOTAL

0/4		1/8
0/4	0/2	4/13
0/2	3/3	1/1

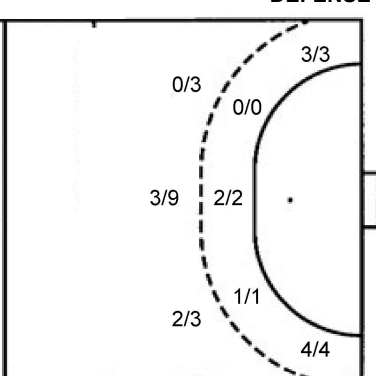
### Shots by position

ATTACK



7m penalties 1/1  
Fastbreak 0/0  
Breakthrough 7/11  
Long dist. 0/0

DEFENSE



7m penalties 2/4  
Fastbreak 5/7  
Breakthrough 8/10  
Long dist. 1/1

### Shooting statistics

Position	Goals	Sav.	Miss.	Post	Blk.	Total	%
Back (9m)	7	4	0	1	2	14	50
Line (6m)	2	0	0	0	0	2	100
Wing	4	1	0	1	0	6	67
7m penalties	1	0	0	0	0	1	100
Fastbreak	0	0	0	0	0	0	0
Breakthrough	7	3	0	1	0	11	64
<b>Total</b>	<b>21</b>	<b>8</b>	<b>0</b>	<b>3</b>	<b>2</b>	<b>34</b>	<b>62</b>

# Jersey number Tot. Total shooting 6m 6m (line) shooting 9m 9m shooting Wng Wing shooting FB Fastbreak sh. 7m 7m penalty sh.  
Brk. Breakthrough sh. LD Long distance sh. As. Assists PC Pass clear chance E7 Earned 7m pen. TF Technical faults St. Steals  
2m 2m punishments C7. Committed 7m E2 Earned 2m pun. YC. Yellow cards R/B Red/Blue cards Blk. Blocks S Starting Line-up

Handball statistics and livescore by Toma-soft ltd (www.toma-soft.hr)



# 2024 IHF Women's Olympic Qualification Tournament



Tournament 2, 1. round

Match Team Statistics  
Match No. 7

**Czech Republic 21 - 31 Spain**  
(10 - 19) (11 - 12)

11.4.2024. 18:30  
Attendance: 2780  
Palacio de los Deportes de  
Torrevieja

Referees: Amar Konjicanin (BIH) / Dino Konjicanin (BIH)

## Spain

#	Surname and name	S	Goals / shots								Attack					Def.			Penalties				TP			
			Tot.	%	9m	6m	Wing	7m	FB	Brk.	LD	As.	PC	E7	E2	TF	St.	C7	Blk	YC	2m	R		B		
2	LOPEZ HERRERO Marta	S	4/4	100			3/3	7m	1/1																	42:07
8	ARDERIUS MARTIN Silvia		1/1	100				1/1							3				1	1						12:01
16	CASTELLANOS SOANEZ Mercedes	S																								57:15
17	GUTIERREZ BERMEJO Jennifer Maria	S	3/4	75		1/1	1/1		1/2														1			30:50
18	ECHEVERRIA MARTINEZ Maitane		1/2	50			1/1		0/1										1					1		14:11
22	GONZALEZ ORTEGA Lara		1/1	100					1/1										1							27:22
27	SO DELGADO-PINTO Danila Patricia		1/3	33	0/2						1/1												1			11:14
30	LOPEZ JIMENEZ Soledad		2/2	100			2/2																	1		21:51
33	GASSAMA CISSOKHO Kaba	S													2	3	2					1				39:03
34	FERNANDEZ FRAGA Alicia	S	4/6	67	0/1	1/1		1/1	1/1	1/2				3												37:19
48	ZOQBI DE PAULA Darly																									0:20
58	PRIETO O'MULLONY Maria		1/2	50	0/1					1/1					1	1	2									9:14
61	TCHAPTCHET DEFO Lysa		1/2	50	0/1	1/1													1				1			24:53
62	ARCOS POVEDA Paula		2/3	67	0/1				1/1	1/1				3		1	1		1							28:13
86	CABRAL BARBOSA Alexandrina	S	3/7	43	1/4			0/1		2/2				1			2	3				1				35:30
99	GONZALEZ ALVAREZ Mireya	S	7/10	70	4/5			0/1		3/4				3				3								24:43
Team / bench																										
UKUPNO			31/47	66	5/15	3/3	7/7	2/4	5/7	8/10	1/1			13	0	4	5	11	7	1	2	0	4	0	0	

Goalkeepers		Saves / shots									
#	Surname and name	Tot.	%	9m	6m	Wing	7m	FB	Brk.	LD	
16	CASTELLANOS SOANEZ Mercedes	8/28	29	4/11	0/2	1/5			3/10		
48	ZOQBI DE PAULA Darly	0/1	0				0/1				
TOTAL		8/29	28	4/11	0/2	1/5	0/1	2/0	3/10	0/0	

Coach: **Ambrosio José Martín Cedrés**

Number of attacks: 56, Efficiency: 55%, Average Duration: 33.46 seconds

### Attack by type of defense

	Shots	9m	6m	Wing	TF	E7	E2
On def. 6-0	23/35	5/15	3/3	7/7	11	4	5
Fastbreak	5/7				0	0	0

### Defense by type

	Total	9m	6m	Wing	Stl.	C7	2m
Def. 6-0	20/33	7/14	2/2	4/6	7	1	0
Fastbreak	0/0				0	0	4

### Attack with superiority / minority / goalkeeper out

	Attack				Reaction		
	Att.	Eff.	Shots	TF	FB	LD	Tot.
7 on 6 (GK out)	1	0%	0/0	1	0/0	0/0	0/0
6 on 6 (GK out)	3	33%	1/2	1	0/0	0/0	0/0
6 on 6	42	52%	22/33	9			
6 on 5 (GK out)	2	100%	2/2	0	0/0	0/0	0/0
6 on 5	8	75%	6/8	0			

Player superiority / GK out counted at the end of attack (in case it changes during attack)

### Defense with superiority / minority / goalkeeper out

	Attack				Reaction		
	Att.	Eff.	Shots	TF	FB	LD	Tot.
6 on 6 (GK out)	3	67%	2/2	1	0/0	1/1	1/1
6 on 5 (GK out)	3	67%	2/3	0	0/0	0/0	0/0
6 on 6	45	38%	17/26	19			
6 on 5	3	0%	0/0	3			
5 on 6	1	0%	0/1	0			

Numbers show attacking numbers of opponent. Lower efficiency of opponent means better defense of this team

# Jersey number Tot. Total shooting 6m 6m (line) shooting 9m 9m shooting Wng Wing shooting FB Fastbreak sh. 7m 7m penalty sh.  
Brk. Breakthrough sh. LD Long distance sh. As. Assists PC Pass clear chance E7 Earned 7m pen. TF Technical faults St. Steals  
2m 2m punishments C7. Committed 7m E2 Earned 2m pun. YC. Yellow cards R/B Red/Blue cards Blk. Blocks S Starting Line-up

Handball statistics and livescore by Toma-soft ltd (www.toma-soft.hr)



# 2024 IHF Women's Olympic Qualification Tournament



Tournament 2, 1. round

## Match Team Statistics

Match No. 7

## Czech Republic 21 - 31 Spain

(10 - 19) (11 - 12)

11.4.2024. 18:30

Attendance: 2780

Palacio de los Deportes de Torrevieja

Referees: Amar Konjicanin (BIH) / Dino Konjicanin (BIH)

### Shot distribution by player

2 M. Lopez Herrero

		1/1
1/1		1/1

1/1 lob

8 S. Arderius Martin

1/1		

17 J. Gutierrez Bermejo

		2/2

1/1 lob

18 M. Echeverria Martinez

1/1		0/1

22 L. Gonzalez Ortega

		1/1

27 D. So Delgado-Pinto

1/1		

1 post 1 miss.

30 S. Lopez Jimenez

		1/1
		1/1

33 K. Gassama Cissokho


34 A. Fernandez Fraga

		2/3
	1/1	1/1
	0/1	

58 M. Prieto O'Mullony

		0/1
1/1		

61 L. Tchaptchet Defo

		1/1

1 post

62 P. Arcos Poveda

		2/2

86 A. Cabral Barbosa

	1/1	2/2
		0/2

2 post

99 M. Gonzalez Alvarez

3/3		1/1
1/1		2/2
	0/2	0/1

### TOTAL

4/4		7/8
4/4	3/3	9/13
2/2	0/3	0/1

4 post 1 miss. 2/2 lob

### Saves distribution goalkeepers

16 M. Castellanos Soanez

0/3	0/1	0/4
2/4	1/1	2/9
	0/1	3/4

48 D. Zoqbi De Paula

		0/1

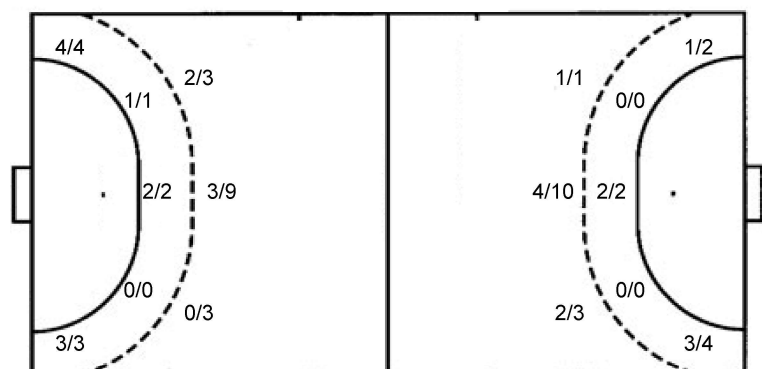
### TOTAL

0/3	0/1	0/4
2/4	1/1	2/9
	0/1	3/5

### Shots by position

ATTACK

DEFENSE



7m penalties 2/4  
Fastbreak 5/7  
Breakthrough 8/10  
Long dist. 1/1

7m penalties 1/1  
Fastbreak 0/0  
Breakthrough 7/11  
Long dist. 0/0

### Shooting statistics

Position	Goals	Sav.	Miss.	Post	Blk.	Total	%
Back (9m)	5	6	1	3	0	15	33
Line (6m)	3	0	0	0	0	3	100
Wing	7	0	0	0	0	7	100
7m penalties	2	1	0	1	0	4	50
Fastbreak	5	2	0	0	0	7	71
Breakthrough	8	2	0	0	0	10	80
<b>Total</b>	<b>30</b>	<b>11</b>	<b>1</b>	<b>4</b>	<b>0</b>	<b>46</b>	<b>65</b>

# Jersey number Tot. Total shooting 6m 6m (line) shooting 9m 9m shooting Wng Wing shooting FB Fastbreak sh. 7m 7m penalty sh.  
Brk. Breakthrough sh. LD Long distance sh. As. Assists PC Pass clear chance E7 Earned 7m pen. TF Technical faults St. Steals  
2m 2m punishments C7. Committed 7m E2 Earned 2m pun. YC. Yellow cards R/B Red/Blue cards Blk. Blocks S Starting Line-up

Handball statistics and livescore by Toma-soft ltd (www.toma-soft.hr)

