



# 2024 IHF Women's Olympic Qualification Tournament



Tournament 1, 3. round

Match Team Statistics

Match No. 6

## Hungary 37 - 28 Japan

(18 - 11) (19 - 17)

14.4.2024. 19:15

Attendance: 4242

Főnix Arena

Referees: Mariana Garcia (ARG) / Maria Ines Paolantoni (ARG)

### Hungary

Players		Goals / shots									Attack				Def.		Penalties			TP						
#	Surname and name	S	Tot.	%	9m	6m	Wing	7m	FB	Brk.	LD	As.	PC	E7	E2	TF	St.	C7	Blk	YC	2m	R	B			
4	FÜZI-TOVIZI Petra Anita	S	1/1	100		1/1										1	1	1							40:13	
6	SZÖLLÖSI-SCHATZL Nadine	S	1/3	33			0/2		1/1																19:12	
11	ALBEK Anna		1/4	25	1/3					0/1															12:48	
15	DEBRECZENI-KLIVINYI Kinga Barbara		4/4	100						4/4		1													8:45	
16	BÖDE-BÍRÓ Blanka	S													1	2									44:18	
19	MARTON Gréta		3/5	60		1/2	2/3																		40:42	
28	PAPP Nikolett		1/1	100						1/1		1					1	2						1	34:59	
32	PÁSZTOR Noémi		2/2	100		2/2											1								13:01	
38	VAMOS Petra	S										3	1	2		1	1								24:23	
42	KLUJBER Katrin Gitta	S	11/15	73	2/4			2/2	1/1	4/5	2/3	3	1				3								35:56	
44	KÁCSOR Gréta																	1							4:10	
58	BORDÁS Réka																								13:24	
59	KUCZÓRA Csenge	S	3/5	60	2/4					1/1		4	2			2									28:57	
61	JANURIK Kinga															1									13:54	
66	GYÖRI-LUKÁCS Viktória	S	6/8	75			5/7				1/1	2				1	2	1					2		58:46	
77	SIMON Petra		4/4	100	2/2					1/1	1/1	2	2				3		1		1				26:32	
	Team / bench																									
	UKUPNO		37/52	71	7/13	4/5	7/12	2/2	2/2	11/13	4/5	16	6	2	2	11	9	5	1	1	3	0	0			

Goalkeepers		Saves / shots									
#	Surname and name	Tot.	%	9m	6m	Wing	7m	FB	Brk.	LD	
16	BÖDE-BÍRÓ Blanka	10/26	38	5/7	1/3	4/8	0/3	0/1	0/4		
61	JANURIK Kinga	3/15	20	2/3	0/1	1/2	0/2	0/1	0/6		
	TOTAL	13/41	32	7/10	1/4	5/10	0/5	0/2	0/10	0/0	

Coach: Vlagyimir Alexandrovics Golovin

Number of attacks: 63, Efficiency: 59%, Average Duration: 25.16 seconds

### Attack by type of defense

	Shots	9m	6m	Wing	TF	E7	E2
On def. 6-0	27/41	7/13	4/5	5/10	11	2	2
Fastbreak	2/2				0	0	0

### Defense by type

	Total	9m	6m	Wing	Stl.	C7	2m
Def. 6-0	20/39	3/14	3/4	4/11	9	5	0
Fastbreak	2/2				0	0	3

### Attack with superiority / minority / goalkeeper out

	Attack				Reaction		
	Att.	Eff.	Shots	TF	FB	LD	Tot.
6 on 6 (GK out)	4	75%	3/4	0	0/0	0/0	0/0
6 on 6	55	56%	31/44	11			
6 on 5	3	67%	2/3	0			
5 on 6	1	100%	1/1	0			

Player superiority / GK out counted at the end of attack (in case it changes during attack)

### Defense with superiority / minority / goalkeeper out

	Attack				Reaction		
	Att.	Eff.	Shots	TF	FB	LD	Tot.
7 on 6 (GK out)	18	39%	7/14	4	0/0	3/4	3/4
6 on 6 (GK out)	1	0%	0/1	0	0/0	0/0	0/0
6 on 6	37	43%	16/26	11			
5 on 6	1	100%	1/1	0			
7 on 5 (GK out)	1	0%	0/0	1	0/0	0/0	0/0
6 on 5 (GK out)	1	0%	0/0	1	0/0	0/0	0/0
6 on 5	5	80%	4/4	1			

Numbers show attacking numbers of opponent. Lower efficiency of opponent means better defense of this team

# Jersey number Tot. Total shooting 6m 6m (line) shooting 9m 9m shooting Wng Wing shooting FB Fastbreak sh. 7m 7m penalty sh.  
 Brk. Breakthrough sh. LD Long distance sh. As. Assists PC Pass clear chance E7 Earned 7m pen. TF Technical faults St. Steals  
 2m 2m punishments C7. Committed 7m E2 Earned 2m pun. YC. Yellow cards R/B Red/Blue cards Blk. Blocks S Starting Line-up

Handball statistics and livescore by Toma-soft ltd (www.toma-soft.hr)



# 2024 IHF Women's Olympic Qualification Tournament



Tournament 1, 3. round

## Match Team Statistics

Match No. 6

## Hungary 37 - 28 Japan

(18 - 11) (19 - 17)

14.4.2024. 19:15  
Attendance: 4242  
Főnix Arena

Referees: Mariana Garcia (ARG) / Maria Ines Paolantoni (ARG)

### Shot distribution by player

#### 4 P. Fűzi-Tóvizi

		1/1

#### 6 N. Szöllösi-Schatzl

0/1		
		1/1

1 post

#### 11 A. Albek

1/2		
		0/1

1 miss.

#### 15 K. Debreczeni-Klivinyi

		1/1
3/3		

#### 19 G. Márton

0/1		2/2
1/1		

1 post

#### 28 N. Papp

	1/1	

#### 32 N. Pásztor

1/1		
1/1		

#### 38 P. Vámos


#### 42 K. Klujber

4/4	1/2	
1/1		0/1
1/1	3/4	1/1

1 miss.

#### 44 G. Kácsor


#### 58 R. Bordás


#### 59 C. Kuczora

1/1		
0/2		1/1
		1/1

#### 66 V. Győri-Lukács

2/2	1/1	
	1/1	
		1/1

1 post 1 miss. 1/1 lob

#### 77 P. Simon

3/3	1/1	

### TOTAL

11/12	3/4	2/2
3/7	1/1	3/4
5/5	4/5	4/5

3 post 3 miss. 1/1 lob

### Saves distribution goalkeepers

#### 16 B. Böde-Bíró

0/2	0/1	0/1
1/5	2/2	0/3
2/3	1/2	1/3

#### 61 K. Janurik

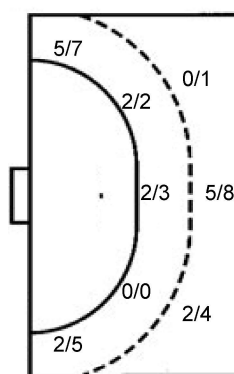
0/2	0/1	
0/1		1/2
0/2	0/1	2/6

### TOTAL

0/4	0/2	0/1
1/6	2/2	1/5
2/5	1/3	3/9

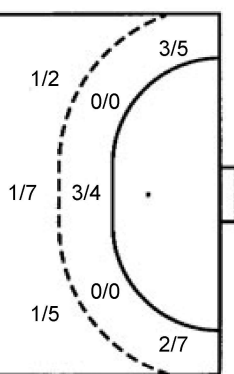
### Shots by position

#### ATTACK



7m penalties 2/2  
Fastbreak 2/2  
Breakthrough 11/13  
Long dist. 4/5

#### DEFENSE



7m penalties 5/5  
Fastbreak 2/2  
Breakthrough 10/10  
Long dist. 0/0

### Shooting statistics

Position	Goals	Sav.	Miss.	Post	Blk.	Total	%
Back (9m)	7	6	0	0	0	13	54
Line (6m)	4	0	0	1	0	5	80
Wing	7	2	1	2	0	12	58
7m penalties	2	0	0	0	0	2	100
Fastbreak	2	0	0	0	0	2	100
Breakthrough	11	1	1	0	0	13	85
<b>Total</b>	<b>33</b>	<b>9</b>	<b>2</b>	<b>3</b>	<b>0</b>	<b>47</b>	<b>70</b>

# Jersey number Tot. Total shooting 6m 6m (line) shooting 9m 9m shooting Wng Wing shooting FB Fastbreak sh. 7m 7m penalty sh.  
Brk. Breakthrough sh. LD Long distance sh. As. Assists PC Pass clear chance E7 Earned 7m pen. TF Technical faults St. Steals  
2m 2m punishments C7. Committed 7m E2 Earned 2m pun. YC. Yellow cards R/B Red/Blue cards Blk. Blocks S Starting Line-up

Handball statistics and livescore by Toma-soft ltd (www.toma-soft.hr)





# 2024 IHF Women's Olympic Qualification Tournament



Tournament 1, 3. round

## Match Team Statistics

Match No. 6

## Hungary 37 - 28 Japan

(18 - 11) (19 - 17)

14.4.2024. 19:15

Attendance: 4242

Főnix Arena

Referees: Mariana Garcia (ARG) / Maria Ines Paolantoni (ARG)

## Shot distribution by player

### 2 M. Nagata


0/1 lob

### 3 N. Sahara

		1/1

1 block

### 4 M. Hatsumi

2/2		
		0/1

### 6 Y. Kitahara


### 7 S. Hattori

1/1		0/1

1 post 0/1 lob

### 9 C. Kasai

		1/1

1/1 lob

### 13 K. Nakayama

		2/2
1/1	0/1	1/1

1 miss.

### 18 H. Matsumoto

	0/1	
		1/1

### 23 N. Aizawa

2/2	2/2	1/1
1/2	0/1	
		1/1

1 post

### 24 A. Okada

1/1		1/2
1/1		1/2

### 32 H. Sasaki

1/1		
0/1		

### 47 S. Yoshino

1/1		

1 miss. 0/1 lob

### 51 Y. Yoshidome

		1/1

### 89 S. Ishikawa

1/1		
0/1	2/2	

1 post

## TOTAL

4/4	2/2	1/1
5/6	0/2	4/5
3/5	2/3	6/9

3 post 2 miss. 1 block 1/4 lob

## Saves distribution goalkeepers

### 1 S. Kametani

0/4	0/2	
2/2		0/2
0/1	1/2	0/3

### 12 A. Baba

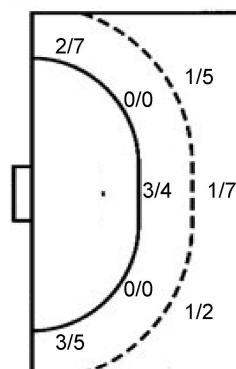
1/8	1/2	0/2
2/5		1/2
0/4	0/1	1/2

## TOTAL

1/12	1/4	0/2
4/7		1/4
0/5	1/3	1/5

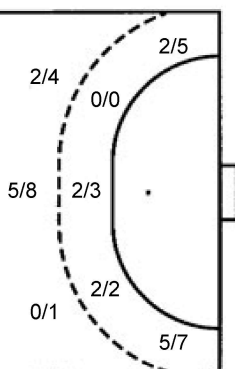
## Shots by position

### ATTACK



7m penalties 5/5  
Fastbreak 2/2  
Breakthrough 10/10  
Long dist. 0/0

### DEFENSE



7m penalties 2/2  
Fastbreak 2/2  
Breakthrough 11/13  
Long dist. 4/5

## Shooting statistics

Position	Goals	Sav.	Miss.	Post	Blk.	Total	%
Back (9m)	3	7	1	2	1	14	21
Line (6m)	3	1	0	0	0	4	75
Wing	5	5	1	1	0	12	42
7m penalties	5	0	0	0	0	5	100
Fastbreak	2	0	0	0	0	2	100
Breakthrough	10	0	0	0	0	10	100
<b>Total</b>	<b>28</b>	<b>13</b>	<b>2</b>	<b>3</b>	<b>1</b>	<b>47</b>	<b>60</b>

# Jersey number Tot. Total shooting 6m 6m (line) shooting 9m 9m shooting Wng Wing shooting FB Fastbreak sh. 7m 7m penalty sh.  
Brk. Breakthrough sh. LD Long distance sh. As. Assists PC Pass clear chance E7 Earned 7m pen. TF Technical faults St. Steals  
2m 2m punishments C7. Committed 7m E2 Earned 2m pun. YC. Yellow cards R/B Red/Blue cards Blk. Blocks S Starting Line-up

Handball statistics and livescore by Toma-soft ltd (www.toma-soft.hr)

