



2024 IHF Women's Olympic Qualification Tournament



Tournament 1, 2. round

Match Team Statistics

Match No. 4

Japan 43 - 16 Great Britain

(25 - 9) (18 - 7)

12.4.2024. 20:30

Attendance: 694

Fónix Arena

Referees: Mariana Garcia (ARG) / Maria Ines Paolantoni (ARG)

Japan

Players		Goals / shots									Attack					Def.			Penalties			TP				
#	Surname and name	S	Tot.	%	9m	6m	Wing	7m	FB	Brk.	LD	As.	PC	E7	E2	TF	St.	C7	Blk	YC	2m		R	B		
2	NAGATA Mika																1		1						32:37	
3	SAHARA Naoko		7/8	88		3/4			3/3		1/1						1	2	1	1		1			39:17	
4	HATSUMI Miyako	S	4/6	67		2/2			2/4						1		2	1							32:32	
5	KINJO Arisa	S	7/9	78	1/3	1/1		1/1		4/4		1	1		1	1									25:56	
6	KITAHARA Yumi	S	5/6	83	1/2					4/4		1	1												30:00	
9	KASAI Chikako																								15:56	
12	BABA Atsuko	S																							35:39	
13	NAKAYAMA Kaho	S	3/5	60	1/2	1/1					1/2	7					1								21:41	
20	AKIYAMA Natsumi	S	2/2	100			1/1		1/1									1			2				30:12	
22	SAITO Naho																								22:34	
23	AIZAWA Natsuki		2/3	67	1/2					1/1		3	1				1								12:07	
24	OKADA Ayame		5/7	71	0/2					3/3	2/2	4	1			2	1				1				38:58	
47	YOSHINO Sanju		2/3	67			1/2		1/1																17:53	
51	YOSHIDOME Yuki	S	2/2	100			1/1		1/1						1	1	1								42:10	
56	KIKUCHI Anna		3/5	60				1/2		1/2	1/1		1	2			1	1							9:03	
89	ISHIKAWA Sora		1/2	50	0/1					1/1		1					2	1							13:13	
Team / bench																										
UKUPNO			43/58	74	4/12	7/8	3/4	2/3	8/10	14/15	5/6	17	5	3	2	8	11	3	2	0	4	0	0			

Goalkeepers		Saves / shots								
#	Surname and name	Tot.	%	9m	6m	Wing	7m	FB	Brk.	LD
12	BABA Atsuko	7/15	47	4/7	1/3	1/1	1/2		0/2	
22	SAITO Naho	7/15	47	2/4	1/2	2/2	0/1	0/1	2/5	
TOTAL		14/30	47	6/11	2/5	3/3	1/3	0/1	2/7	0/0

Coach: Shigeo Kusumoto

Number of attacks: 61, Efficiency: 70%, Average Duration: 22.98 seconds

Attack by type of defense

	Shots	9m	6m	Wing	TF	E7	E2
On def. 6-0	25/36	4/12	4/5	3/4	8	3	2
Fastbreak	8/10				0	0	0

Defense by type

	Total	9m	6m	Wing	Stl.	C7	2m
Def. 6-0	12/37	5/20	2/6	0/4	11	3	0
Fastbreak	1/1				0	0	4

Attack with superiority / minority / goalkeeper out

	Attack				Reaction		
	Att.	Eff.	Shots	TF	FB	LD	Tot.
6 on 6 (GK out)	3	67%	2/2	1	0/0	0/0	0/0
6 on 6	52	73%	38/45	7			
6 on 5	4	75%	3/4	0			
5 on 6	2	0%	0/2	0			

Player superiority / GK out counted at the end of attack (in case it changes during attack)

Defense with superiority / minority / goalkeeper out

	Attack				Reaction		
	Att.	Eff.	Shots	TF	FB	LD	Tot.
7 on 6 (GK out)	8	13%	1/2	6	0/0	3/3	3/3
6 on 6 (GK out)	3	0%	0/1	2	0/0	1/1	1/1
6 on 6	42	31%	13/28	14			
5 on 6	1	0%	0/1	0			
6 on 5	5	20%	1/5	0			
6 on 4	1	100%	1/1	0			

Numbers show attacking numbers of opponent. Lower efficiency of opponent means better defense of this team

Jersey number Tot. Total shooting 6m 6m (line) shooting 9m 9m shooting Wng Wing shooting FB Fastbreak sh. 7m 7m penalty sh.
 Brk. Breakthrough sh. LD Long distance sh. As. Assists PC Pass clear chance E7 Earned 7m pen. TF Technical faults St. Steals
 2m 2m punishments C7. Committed 7m E2 Earned 2m pun. YC. Yellow cards R/B Red/Blue cards Blk. Blocks S Starting Line-up



2024 IHF Women's Olympic Qualification Tournament



Tournament 1, 2. round

Match Team Statistics

Match No. 4

Japan 43 - 16 Great Britain

(25 - 9) (18 - 7)

12.4.2024. 20:30

Attendance: 694

Fónix Arena

Referees: Mariana Garcia (ARG) / Maria Ines Paolantoni (ARG)

Shot distribution by player

2 M. Nagata

3 N. Sahara

2/2		
1/1	3/3	0/1

1/1 lob

4 M. Hatsumi

	1/1	
0/1		0/1
	2/2	

1/1 lob

5 A. Kinjo

1/1		
1/1		1/1
	1/1	3/3

1 post 1 block

6 Y. Kitahara

3/3		
1/1		
0/1	1/1	

9 C. Kasai

13 K. Nakayama

1/1		
1/1	1/1	

1 post 1 block

20 N. Akiyama

1/1		
1/1		

23 N. Aizawa

	1/1	
1/1		

1 block

24 A. Okada

1/1	2/2	2/2

1 post 1 miss.

47 S. Yoshino

	0/1	
1/1		

1/1 lob

51 Y. Yoshidome

2/2		

56 A. Kikuchi

1/1		
	1/1	0/2
1/1		

89 S. Ishikawa

		1/1
0/1		

TOTAL

7/7	2/3	
5/6	1/1	2/5
8/10	10/10	5/6

3 post 1 miss. 3 block 3/3 lob

Saves distribution goalkeepers

12 A. Baba

0/2	1/1	1/2
1/2		2/5
1/1	1/2	

22 N. Saito

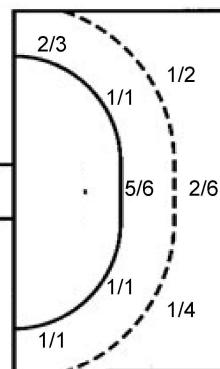
	0/1	
2/5	2/2	0/1
1/1	1/3	1/2

TOTAL

0/2	1/2	1/2
3/7	2/2	2/6
2/2	2/5	1/2

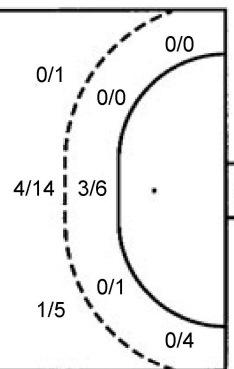
Shots by position

ATTACK



7m penalties 2/3
Fastbreak 8/10
Breakthrough 14/15
Long dist. 5/6

DEFENSE



7m penalties 2/3
Fastbreak 1/1
Breakthrough 5/7
Long dist. 0/0

Shooting statistics

Position	Goals	Sav.	Miss.	Post	Bik.	Total	%
Back (9m)	4	2	1	3	2	12	33
Line (6m)	7	1	0	0	0	8	88
Wing	3	1	0	0	0	4	75
7m penalties	2	1	0	0	0	3	67
Fastbreak	8	2	0	0	0	10	80
Breakthrough	14	1	0	0	0	15	93
Total	38	8	1	3	2	52	73

Jersey number Tot. Total shooting 6m 6m (line) shooting 9m 9m shooting Wng Wing shooting FB Fastbreak sh. 7m 7m penalty sh.
Brk. Breakthrough sh. LD Long distance sh. As. Assists PC Pass clear chance E7 Earned 7m pen. TF Technical faults St. Steals
2m 2m punishments C7. Committed 7m E2 Earned 2m pun. YC. Yellow cards R/B Red/Blue cards Blk. Blocks S Starting Line-up

Handball statistics and livescore by Toma-soft ltd (www.toma-soft.hr)



2024 IHF Women's Olympic Qualification Tournament



Tournament 1, 2. round

Match Team Statistics

Match No. 4

Japan 43 - 16 Great Britain
(25 - 9) (18 - 7)

12.4.2024. 20:30
Attendance: 694
Fónix Arena

Referees: Mariana Garcia (ARG) / Maria Ines Paolantoni (ARG)

Shot distribution by player

2 G. Gowland

1/1	0/1	
1/1		2/2
	1/2	1/1

1 miss. 1 block

3 Z. Lacour

6 A. Rayner

7 D. Davies

8 L. Davies

1/1		
	0/1	0/1
0/1	1/1	

1 post 3 miss. 1 block

9 T. Woodiwiss

		0/1
		1/1
		0/1

10 H. Saunders

		1/1
	0/1	

2 miss.

11 F. Steeples

1 post

13 M. Tubacka

15 L. Thornevell

17 K. Kesselring

	1/1	
2/2		1/2

18 H. Warren

1/2		
0/1	1/1	

2 post

19 H. Luke

0/2		
	0/1	

35 C. Salter

TOTAL

2/2	1/2	1/2
4/7	0/2	4/6
0/2	3/5	1/2

4 post 6 miss. 2 block

Saves distribution goalkeepers

1 C. Stephanides

0/7	1/3	
1/5		3/5
2/9	0/5	1/6

16 S. O'sullivan

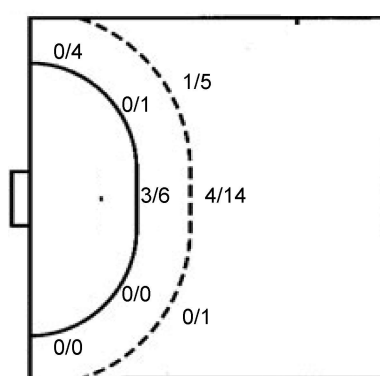
0/1		
	0/2	

TOTAL

0/7	1/3	
1/6		3/5
2/9	0/7	1/6

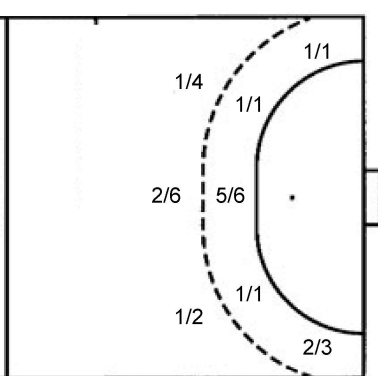
Shots by position

ATTACK



7m penalties 2/3
Fastbreak 1/1
Breakthrough 5/7
Long dist. 0/0

DEFENSE



7m penalties 2/3
Fastbreak 8/10
Breakthrough 14/15
Long dist. 5/6

Shooting statistics

Position	Goals	Sav.	Miss.	Post	Blk.	Total	%
Back (9m)	5	6	6	1	2	20	25
Line (6m)	3	2	0	2	0	7	43
Wing	0	3	0	1	0	4	0
7m penalties	2	1	0	0	0	3	67
Fastbreak	1	0	0	0	0	1	100
Breakthrough	5	2	0	0	0	7	71
Total	16	14	6	4	2	42	38

Jersey number Tot. Total shooting 6m 6m (line) shooting 9m 9m shooting Wng Wing shooting FB Fastbreak sh. 7m 7m penalty sh.
Brk. Breakthrough sh. LD Long distance sh. As. Assists PC Pass clear chance E7 Earned 7m pen. TF Technical faults St. Steals
2m 2m punishments C7. Committed 7m E2 Earned 2m pun. YC. Yellow cards R/B Red/Blue cards Blk. Blocks S Starting Line-up

Handball statistics and livescore by Toma-soft ltd (www.toma-soft.hr)

