



2024 IHF Women's Olympic Qualification Tournament



Tournament 1, 2. round

Match Team Statistics

Match No. 3

Sweden 25 - 28 Hungary

(11 - 15) (14 - 13)

12.4.2024. 18:00

Attendance: 3679

Főnix Arena

Referees: Tanja Kuttler (GER) / Maike Merz (GER)

Shot distribution by player

3 N. Koppang

6 C. Strömberg

1/1		

7 L. Blohm

		2/2
		1/1
	1/1	

8 J. Roberts

1 post

10 M. Lundström

17 N. Dano

	1/1	0/1

23 E. Lindkvist

1/2		
	0/1	0/1
0/1		

24 N. Hagman

	1/1	
1/1	0/1	1/1
1/1		

29 K. Thorlacius Thorleifsdóttir

	1/1	1/1
		2/2

32 J. Johansson

		0/1

35 S. Hvenfelt

		1/1

38 E. Hansson

		0/1
		0/1
	1/2	

42 J. Karlsson

1/1	1/1	
1/1		2/3
	1/1	1/1

2 post

54 T. Axné

		1/1

1 miss.

TOTAL

3/4	2/2	2/4
2/2	1/3	6/9
1/2	4/5	4/5

3 post 1 miss.

Saves distribution goalkeepers

1 J. Bundsen

1/3	1/2	
3/7	2/2	2/4
0/12	1/4	2/4

21 E. Eriksson

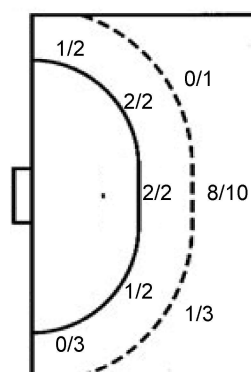
	0/1	

TOTAL

1/3	1/2	
3/7	2/2	2/4
0/12	1/5	2/4

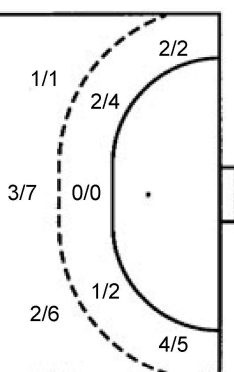
Shots by position

ATTACK



7m penalties	3/3
Fastbreak	0/0
Breakthrough	6/11
Long dist.	1/1

DEFENSE



7m penalties	3/3
Fastbreak	1/1
Breakthrough	9/17
Long dist.	0/0

Shooting statistics

Position	Goals	Sav.	Miss.	Post	Blk.	Total	%
Back (9m)	9	3	0	2	0	14	64
Line (6m)	5	1	0	0	0	6	83
Wing	1	4	0	0	0	5	20
7m penalties	3	0	0	0	0	3	100
Fastbreak	0	0	0	0	0	0	0
Breakthrough	6	3	1	1	0	11	55
Total	24	11	1	3	0	39	62

Jersey number Tot. Total shooting 6m 6m (line) shooting 9m 9m shooting Wng Wing shooting FB Fastbreak sh. 7m 7m penalty sh.
 Brk. Breakthrough sh. LD Long distance sh. As. Assists PC Pass clear chance E7 Earned 7m pen. TF Technical faults St. Steals
 2m 2m punishments C7. Committed 7m E2 Earned 2m pun. YC. Yellow cards R/B Red/Blue cards Blk. Blocks S Starting Line-up

Handball statistics and livescore by Toma-soft ltd (www.toma-soft.hr)



2024 IHF Women's Olympic Qualification Tournament



Tournament 1, 2. round

Match Team Statistics

Match No. 3

Sweden 25 - 28 Hungary

(11 - 15) (14 - 13)

12.4.2024. 18:00

Attendance: 3679

Főnix Arena

Referees: Tanja Kuttler (GER) / Maike Merz (GER)

Hungary

#	Surname and name	S	Goals / shots								Attack				Def.			Penalties				TP					
			Tot.	%	9m	6m	Wing	7m	FB	Brk.	LD	As.	PC	E7	E2	TF	St.	C7	Blk	YC	2m		R	B			
4	FÜZI-TOVIZI Petra Anita	S	0/3	0		0/3								1		1											48:32
6	SZÖLLÖSI-SCHATZL Nadine	S	2/2	100			2/2											4									52:00
11	ALBEK Anna																										
15	DEBRECZENI-KLIVINYI Kinga Barbara		2/6	33	0/2					2/4			2	2													16:11
16	BÖDE-BÍRÓ Blanka	S																									57:40
19	MARTON Gréta																										7:30
28	PAPP Nikolett															2			1		1	2					31:38
38	VAMOS Petra	S	1/4	25		1/1				0/3			1					2	1								43:58
42	KLUJBER Katrin Gitta	S	7/11	64	2/4			2/2		3/5			1	2	1	1	1	1					1				41:58
44	KÁCSOR Gréta																										
48	FALUVÉGI Dorottya																										
58	BORDÁS Réka		1/1	100		1/1																		1			12:09
59	KUCZORA Csenge	S	8/13	62	4/8			1/1		3/4			3	1					1								37:54
61	JANURIK Kinga																										0:13
66	GYÖRI-LUKÁCS Viktória	S	6/7	86		1/1	4/5		1/1							1	1										59:09
77	SIMON Petra		1/1	100						1/1			2		1		1		1								10:24
	Team / bench																							1			
	UKUPNO		28/48	58	6/14	3/6	6/7	3/3	1/1	9/17	0/0		10	5	3	2	10	7	3	0	2	4	0	0			

#	Surname and name	Saves / shots								
		Tot.	%	9m	6m	Wing	7m	FB	Brk.	LD
16	BÖDE-BÍRÓ Blanka	11/34	32	3/12	1/6	4/5	0/2		3/9	
61	JANURIK Kinga	0/1	0				0/1			
	TOTAL	11/35	31	3/12	1/6	4/5	0/3	0/0	3/9	0/0

Coach: Vlagymir Alexandrovics Golovin

Number of attacks: 51, Efficiency: 55%, Average Duration: 40.78 seconds

Attack by type of defense

	Shots	9m	6m	Wing	TF	E7	E2
On def. 6-0	23/43	6/14	2/5	6/7	10	3	2
Fastbreak	1/1				0	0	0

Defense by type

	Total	9m	6m	Wing	Stl.	C7	2m
Def. 6-0	21/36	9/14	5/6	1/5	7	3	0
Fastbreak	0/0				0	0	4

Attack with superiority / minority / goalkeeper out

	Attack				Reaction		
	Att.	Eff.	Shots	TF	FB	LD	Tot.
7 on 6 (GK out)	2	100%	2/2	0	0/0	1/1	1/1
6 on 6 (GK out)	2	0%	0/0	2	0/0	0/0	0/0
6 on 6	42	50%	21/34	8			
5 on 6	2	100%	2/2	0			
6 on 5	3	100%	3/3	0			

Player superiority / GK out counted at the end of attack (in case it changes during attack)

Defense with superiority / minority / goalkeeper out

	Attack				Reaction		
	Att.	Eff.	Shots	TF	FB	LD	Tot.
7 on 6 (GK out)	1	0%	0/0	1	0/0	0/0	0/0
6 on 6 (GK out)	3	0%	0/2	1	0/0	0/0	0/0
6 on 6	40	53%	21/31	9			
6 on 5	7	57%	4/7	0			

Numbers show attacking numbers of opponent. Lower efficiency of opponent means better defense of this team

Jersey number Tot. Total shooting 6m 6m (line) shooting 9m 9m shooting Wng Wing shooting FB Fastbreak sh. 7m 7m penalty sh.
 Brk. Breakthrough sh. LD Long distance sh. As. Assists PC Pass clear chance E7 Earned 7m pen. TF Technical faults St. Steals
 2m 2m punishments C7. Committed 7m E2 Earned 2m pun. YC. Yellow cards R/B Red/Blue cards Blk. Blocks S Starting Line-up



2024 IHF Women's Olympic Qualification Tournament



Tournament 1, 2. round

Match Team Statistics

Match No. 3

Sweden 25 - 28 Hungary

(11 - 15) (14 - 13)

12.4.2024. 18:00

Attendance: 3679

Főnix Arena

Referees: Tanja Kuttler (GER) / Maike Merz (GER)

Shot distribution by player

4 P. Fűzi-Tóvizi

	0/1	
0/1		
		0/1

6 N. Szöllősi-Schatzl

2/2		

11 A. Albek

15 K. Debreczeni-Klivinyi

0/1		0/1
1/1	0/1	0/1

1/1 lob

19 G. Márton

28 N. Papp

38 P. Vámos

0/1		
1/1		

1 post 1 miss.

42 K. Klujber

1/1		
1/2	0/1	1/2
1/1	1/1	2/2

1 block

44 G. Kácsor

48 D. Faluvégi

58 R. Bordás

	1/1	

59 C. Kuczora

1/1		
3/3	0/1	
2/2	2/2	

1 miss. 3 block

66 V. Győri-Lukács

	1/1	
5/5		

1 post

77 P. Simon

		1/1

TOTAL

2/3	1/2	
4/7	0/2	2/4
12/12	4/5	2/4

2 post 2 miss. 4 block 1/1 lob

Saves distribution goalkeepers

16 B. Böde-Bíró

1/4	0/2	2/4
0/2	2/3	3/8
1/2	1/4	1/5

61 K. Janurik

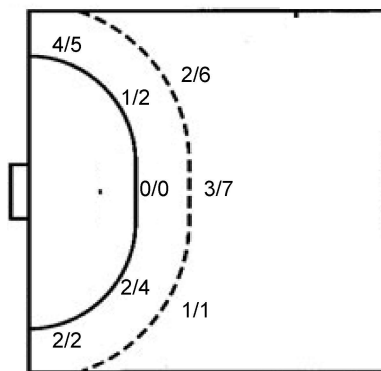
		0/1

TOTAL

1/4	0/2	2/4
0/2	2/3	3/9
1/2	1/4	1/5

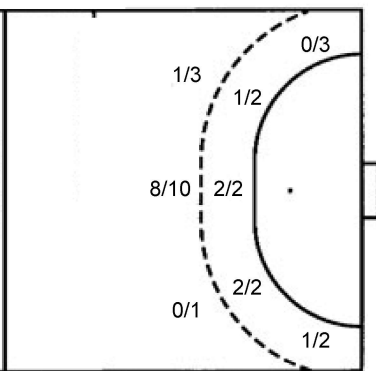
Shots by position

ATTACK



7m penalties 3/3
Fastbreak 1/1
Breakthrough 9/17
Long dist. 0/0

DEFENSE



7m penalties 3/3
Fastbreak 0/0
Breakthrough 6/11
Long dist. 1/1

Shooting statistics

Position	Goals	Sav.	Miss.	Post	Blk.	Total	%
Back (9m)	6	3	1	0	4	14	43
Line (6m)	3	3	0	0	0	6	50
Wing	6	0	0	1	0	7	86
7m penalties	3	0	0	0	0	3	100
Fastbreak	1	0	0	0	0	1	100
Breakthrough	9	6	1	1	0	17	53
Total	28	12	2	2	4	48	58

Jersey number Tot. Total shooting 6m 6m (line) shooting 9m 9m shooting Wng Wing shooting FB Fastbreak sh. 7m 7m penalty sh.
Brk. Breakthrough sh. LD Long distance sh. As. Assists PC Pass clear chance E7 Earned 7m pen. TF Technical faults St. Steals
2m 2m punishments C7. Committed 7m E2 Earned 2m pun. YC. Yellow cards R/B Red/Blue cards Blk. Blocks S Starting Line-up

Handball statistics and livescore by Toma-soft ltd (www.toma-soft.hr)

