



2024 IHF Women's Olympic Qualification Tournament



Tournament 1, 1. round

Match Team Statistics

Sweden 35 - 28 Japan
(17 - 13) (18 - 15)

11.4.2024. 18:00

Match No. 2

Attendance: 1643

Fönix Arena

Referees: Arthur Brunner (SUI) / Morad Salah (SUI)

Sweden

#	Surname and name	S	Goals / shots								Attack				Def.			Penalties				TP												
			Tot.	%	9m	6m	Wing	7m	FB	Brk.	LD	As.	PC	E7	E2	TF	St.	C7	Blk	YC	2m		R	B										
1	BUNDSSEN Johanna	S	0/1	0											0/1	3																		57:25
3	KOPPANG Nina		0/1	0	0/1											1																	6:21	
6	STRÖMBERG Carin																																	
7	BLOHM Linn	S	6/7	86		6/7											1																52:23	
8	ROBERTS Jamina	S	6/6	100	1/1		1/1								3	3																	38:24	
10	LUNDSTRÖM Mathilda	S																															38:50	
17	DANO Nina	S	3/5	60											1																		51:50	
21	ERIKSSON Evelina																																	
23	LINDKVIST Emma	S	2/3	67						1/1	0/1	1/1			2																		44:48	
24	HAGMAN Nathalie		3/5	60		0/1	3/3					0/1			1																		23:21	
29	THORLACIUS THORLEIFSDOTTIR Kristin		1/1	100								1/1																					17:12	
32	JOHANSSON Jennifer																																4:22	
35	HVENFELT Sofia		2/3	67		2/3																											7:50	
38	HANSSON Elin	S	5/6	83			2/3								1																		54:55	
42	KARLSSON Jenny		7/13	54	2/5										1	2	2	1	3	1	1											22:19		
54	AXNER Tyra																																	
	Team / bench																																	
	UKUPNO		35/51	69	3/7	8/10	3/5	3/3	4/4	13/19	1/3	13	5	3	2	14	5	2	0	0	2	0	0											

#	Surname and name	Saves / shots								
		Tot.	%	9m	6m	Wing	7m	FB	Brk.	LD
1	BUNDSSEN Johanna	16/44	36	11/16	1/9	1/10	0/2	0/1	3/6	
21	ERIKSSON Evelina									
	TOTAL	16/44	36	11/16	1/9	1/10	0/2	0/1	3/6	0/0

Coach: Tomas Axner

Number of attacks: 62, Efficiency: 56%, Average Duration: 23.77 seconds

Attack by type of defense

	Shots	9m	6m	Wing	TF	E7	E2
On def. 6-0	25/36	3/5	7/9	2/4	13	2	2
On def. 5-1	1/4	0/2	1/1	0/0	1	1	0
Fastbreak	4/4				0	0	0

Defense by type

	Total	9m	6m	Wing	Stl.	C7	2m
Def. 6-0	24/46	5/20	8/10	8/9	5	2	0
Fastbreak	1/1				0	0	2

Attack with superiority / minority / goalkeeper out

	Attack				Reaction		
	Att.	Eff.	Shots	TF	FB	LD	Tot.
7 on 6 (GK out)	3	100%	3/3	0	0/0	0/0	0/0
6 on 6 (GK out)	2	100%	2/2	0	0/0	0/0	0/0
6 on 5 (GK out)	1	100%	1/1	0	0/0	0/0	0/0
6 on 6	53	51%	27/39	14			
6 on 5	3	67%	2/3	0			

Player superiority / GK out counted at the end of attack (in case it changes during attack)

Defense with superiority / minority / goalkeeper out

	Attack				Reaction		
	Att.	Eff.	Shots	TF	FB	LD	Tot.
7 on 6 (GK out)	25	52%	13/19	6	1/1	0/2	1/3
6 on 6 (GK out)	3	33%	1/2	1	0/0	1/1	1/1
6 on 6	31	35%	11/26	5			
6 on 5 (GK out)	1	100%	1/1	0	0/0	0/0	0/0
6 on 5	2	100%	2/2	0			

Numbers show attacking numbers of opponent. Lower efficiency of opponent means better defense of this team

Jersey number Tot. Total shooting 6m 6m (line) shooting 9m 9m shooting Wng Wing shooting FB Fastbreak sh. 7m 7m penalty sh.
 Brk. Breakthrough sh. LD Long distance sh. As. Assists PC Pass clear chance E7 Earned 7m pen. TF Technical faults St. Steals
 2m 2m punishments C7 Committed 7m E2 Earned 2m pun. YC. Yellow cards R/B Red/Blue cards Blk. Blocks S Starting Line-up



2024 IHF Women's Olympic Qualification Tournament



Tournament 1, 1. round

Match Team Statistics

Match No. 2

Sweden 35 - 28 Japan

(17 - 13) (18 - 15)

11.4.2024. 18:00

Attendance: 1643

Főnix Arena

Referees: Arthur Brunner (SUI) / Morad Salah (SUI)

Shot distribution by player

3 N. Koppang

		0/1

6 C. Strömberg

7 L. Blohm

1/1	1/1	2/2
1/1		1/1

1 miss.

8 J. Roberts

2/2		
2/2	2/2	

10 M. Lundström

17 N. Dano

2/2		
0/1		
	0/1	1/1

23 E. Lindkvist

	2/2	

1 miss.

24 N. Hagman

		2/2
1/1		

1 post 1 miss.

29 K. Thorlacius Thorleifsdottir

	1/1	

32 J. Johansson

35 S. Hvenfelt

1/1	1/1	0/1

38 E. Hansson

		1/1
1/1	2/2	1/2

42 J. Karlsson

1/1	2/3	1/2
2/3		1/1

1 post 2 miss.

54 T. Axné

TOTAL

6/6	3/4	3/4
3/5		5/5
5/5	8/9	2/5

2 post 5 miss.

Saves distribution goalkeepers

1 J. Bundsen

0/2		1/2
2/2	1/1	4/6
3/10	1/7	4/9

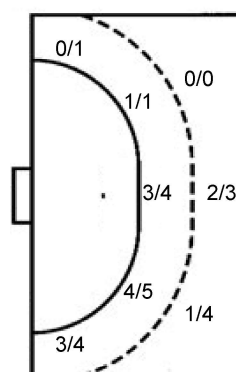
21 E. Eriksson

TOTAL

0/2		1/2
2/2	1/1	4/6
3/10	1/7	4/9

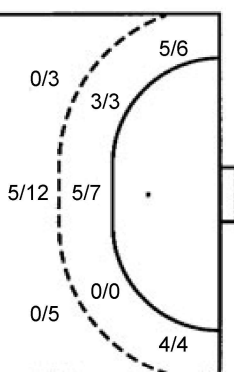
Shots by position

ATTACK



7m penalties 3/3
Fastbreak 4/4
Breakthrough 13/19
Long dist. 1/3

DEFENSE



7m penalties 2/2
Fastbreak 1/1
Breakthrough 3/7
Long dist. 0/0

Shooting statistics

Position	Goals	Sav.	Miss.	Post	Blk.	Total	%
Back (9m)	3	2	2	0	0	7	43
Line (6m)	8	1	1	0	0	10	80
Wing	3	1	0	1	0	5	60
7m penalties	3	0	0	0	0	3	100
Fastbreak	4	0	0	0	0	4	100
Breakthrough	13	4	1	1	0	19	68
Total	34	8	4	2	0	48	71

Jersey number Tot. Total shooting 6m 6m (line) shooting 9m 9m shooting Wng Wing shooting FB Fastbreak sh. 7m 7m penalty sh.
Brk. Breakthrough sh. LD Long distance sh. As. Assists PC Pass clear chance E7 Earned 7m pen. TF Technical faults St. Steals
2m 2m punishments C7. Committed 7m E2 Earned 2m pun. YC. Yellow cards R/B Red/Blue cards Blk. Blocks S Starting Line-up

Handball statistics and livescore by Toma-soft ltd (www.toma-soft.hr)



2024 IHF Women's Olympic Qualification Tournament



Tournament 1, 1. round

Match Team Statistics

Match No. 2

Sweden 35 - 28 Japan

(17 - 13) (18 - 15)

11.4.2024. 18:00

Attendance: 1643

Föenix Arena

Referees: Arthur Brunner (SUI) / Morad Salah (SUI)

Japan

Players		Goals / shots									Attack					Def.			Penalties			TP			
#	Surname and name	S	Tot.	%	9m	6m	Wing	7m	FB	Brk.	LD	As.	PC	E7	E2	TF	St.	C7	Blk	YC	2m		R	B	
1	KAMETANI Sakura	S																							41:08
2	NAGATA Mika	S	1/2	50		1/2												1							47:47
3	SAHARA Naoko																								
4	HATSUMI Miyako		4/4	100		3/3	1/1																		17:05
6	KITAHARA Yumi												1					1							20:08
7	HATTORI Saki	S	3/3	100			2/2	1/1						1							1				45:32
9	KASAI Chikako		4/5	80		4/5						1			2	1	2								35:37
12	BABA Atsuko																								3:11
13	NAKAYAMA Kaho	S	2/8	25	2/7					0/1							2		1						24:59
18	MATSUMOTO Hikaru	S	4/4	100			4/4																		38:57
23	AIZAWA Natsuki	S	4/8	50	1/4			1/1		2/3		6	2	1			4	2							54:19
24	OKADA Ayame																								5:39
32	SASAKI Haruno	S	1/6	17	1/5					0/1		6	1				4								36:06
47	YOSHINO Sanju		2/3	67	0/1		2/2											1							13:43
51	YOSHIDOME Yuki		1/2	50			0/1		1/1										2				1		14:54
89	ISHIKAWA Sora		2/5	40	1/3					1/2		6													20:55
Team / bench																									
UKUPNO			28/50	56	5/20	8/10	9/10	2/2	1/1	3/7	0/0	19	4	2	2	12	7	3	0	0	0	2	0	0	

Goalkeepers		Saves / shots								
#	Surname and name	Tot.	%	9m	6m	Wing	7m	FB	Brk.	LD
1	KAMETANI Sakura	8/38	21	2/4	1/9	1/4	0/3	0/3	4/15	
12	BABA Atsuko	0/3	0	0/1					0/2	
TOTAL		8/41	20	2/5	1/9	1/4	0/3	0/3	4/17	0/0

Coach: Shigeo Kusumoto

Number of attacks: 62, Efficiency: 45%, Average Duration: 34.26 seconds

Attack by type of defense

	Shots	9m	6m	Wing	TF	E7	E2
On def. 6-0	24/46	5/20	8/10	8/9	12	2	2
Fastbreak	1/1				0	0	0

Defense by type

	Total	9m	6m	Wing	Stl.	C7	2m
Def. 6-0	25/36	3/5	7/9	2/4	6	2	0
Def. 5-1	1/4	0/2	1/1	0/0	1	1	0
Fastbreak	4/4				0	0	2

Attack with superiority / minority / goalkeeper out

	Attack				Reaction		
	Att.	Eff.	Shots	TF	FB	LD	Tot.
7 on 6 (GK out)	25	52%	13/19	6	1/1	0/2	1/3
6 on 6 (GK out)	3	33%	1/2	1	0/0	1/1	1/1
6 on 6	31	35%	11/26	5			
6 on 5 (GK out)	1	100%	1/1	0	0/0	0/0	0/0
6 on 5	2	100%	2/2	0			

Player superiority / GK out counted at the end of attack (in case it changes during attack)

Defense with superiority / minority / goalkeeper out

	Attack				Reaction		
	Att.	Eff.	Shots	TF	FB	LD	Tot.
7 on 6 (GK out)	3	100%	3/3	0	0/0	0/0	0/0
6 on 6 (GK out)	2	100%	2/2	0	0/0	0/0	0/0
6 on 5 (GK out)	1	100%	1/1	0	0/0	0/0	0/0
6 on 6	53	51%	27/39	14			
6 on 5	3	67%	2/3	0			

Numbers show attacking numbers of opponent. Lower efficiency of opponent means better defense of this team

Jersey number Tot. Total shooting 6m 6m (line) shooting 9m 9m shooting Wng Wing shooting FB Fastbreak sh. 7m 7m penalty sh.
 Brk. Breakthrough sh. LD Long distance sh. As. Assists PC Pass clear chance E7 Earned 7m pen. TF Technical faults St. Steals
 2m 2m punishments C7. Committed 7m E2 Earned 2m pun. YC. Yellow cards R/B Red/Blue cards Blk. Blocks S Starting Line-up

Handball statistics and livescore by Toma-soft ltd (www.toma-soft.hr)



2024 IHF Women's Olympic Qualification Tournament



Tournament 1, 1. round

Match Team Statistics

Match No. 2

Sweden 35 - 28 Japan

(17 - 13) (18 - 15)

11.4.2024. 18:00

Attendance: 1643

Fönix Arena

Referees: Arthur Brunner (SUI) / Morad Salah (SUI)

Shot distribution by player

2 M. Nagata

		0/1

1/1 lob

3 N. Sahara

4 M. Hatsumi

1/1		
	1/1	1/1

1/1 lob

6 Y. Kitahara

7 S. Hattori

		1/1
		2/2

9 C. Kasai

	2/2	1/1

1 miss. 1/1 lob

13 K. Nakayama

0/1		0/1
1/1		1/2

1 post 2 miss.

18 H. Matsumoto

1/1		
2/2	1/1	

23 N. Aizawa

2/2	1/1	0/2

2 miss. 1/1 lob

24 A. Okada

32 H. Sasaki

		0/1
0/1		0/1
1/2		0/1

47 S. Yoshino

		1/2

1/1 lob

51 Y. Yoshidome

1/2		

89 S. Ishikawa

		1/1
	0/1	
0/1	1/2	

TOTAL

2/2		1/2
0/2	0/1	2/6
7/10	6/7	5/9

1 post 5 miss. 5/5 lob

Saves distribution goalkeepers

1 S. Kametani

0/5	1/4	1/4
2/5		0/5
0/4	1/6	3/5

12 A. Baba

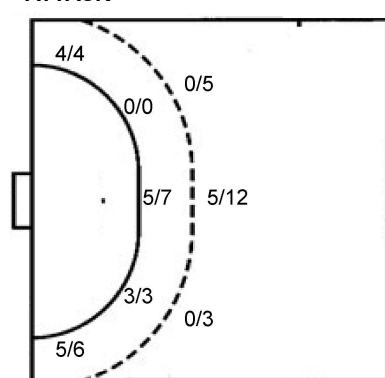
0/1		
0/1	0/1	

TOTAL

0/6	1/4	1/4
2/5		0/5
0/5	1/7	3/5

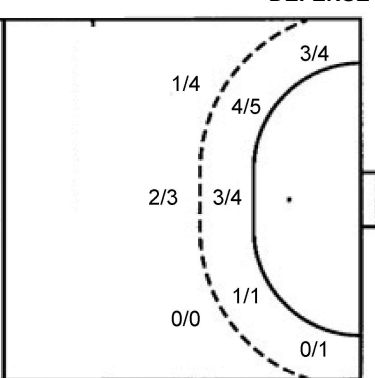
Shots by position

ATTACK



7m penalties 2/2
Fastbreak 1/1
Breakthrough 3/7
Long dist. 0/0

DEFENSE



7m penalties 3/3
Fastbreak 4/4
Breakthrough 13/19
Long dist. 1/3

Shooting statistics

Position	Goals	Sav.	Miss.	Post	Blk.	Total	%
Back (9m)	5	11	3	1	0	20	25
Line (6m)	8	1	1	0	0	10	80
Wing	9	1	0	0	0	10	90
7m penalties	2	0	0	0	0	2	100
Fastbreak	1	0	0	0	0	1	100
Breakthrough	3	3	1	0	0	7	43
Total	28	16	5	1	0	50	56

Jersey number Tot. Total shooting 6m 6m (line) shooting 9m 9m shooting Wng Wing shooting FB Fastbreak sh. 7m 7m penalty sh.
Brk. Breakthrough sh. LD Long distance sh. As. Assists PC Pass clear chance E7 Earned 7m pen. TF Technical faults St. Steals
2m 2m punishments C7. Committed 7m E2 Earned 2m pun. YC. Yellow cards R/B Red/Blue cards Blk. Blocks S Starting Line-up

Handball statistics and livescore by Toma-soft ltd (www.toma-soft.hr)

