



# 24th Women's World Championship 2019

## Japan



### Bronze Medal Match

#### Match Team Statistics

Match No: 95

**NOR 28 - 33 RUS**

(15 - 18) (13 - 15)

SUN 15 DEC 2019

17:30

Park Dome Kumamoto

Referees: GARCIA I (ESP) / MARIN A (ESP)

#### NOR - Norway

Players		Shots									Offence		Defence		Penalties			TP	
No.	Name	G/S	%	6m	Wing	9m	7m	FB	BT	EG	AS	TF	ST	BS	YC	2Min	RC		BC
3	ARNTZEN Emilie Hegh	7/9	78	2/2		3/5			2/2		1	2							41:17
6	LOKE Heidi										1								14:37
7	SKOGRAND Stine Ruscetta	0/2	0	0/1					0/1		2	1	1						12:48
8	WAADE Silje Katrine	2/6	33	0/1		1/4			1/1			1	2		1	1			34:23
10	OFTEDAL Stine Bredal	7/11	64			0/3	3/3	2/2	2/3			3	1						29:50
11	AUNE Malin Larsen	4/4	100		3/3			1/1				1	1						45:50
12	SOLBERG Silje Margaretha																		49:44
13	BRATTSET Kari Skaar	3/4	75	3/4							1			1		1			55:29
16	PEDERSEN Andrea Austmo																		5:30
19	HOGDAHL Moa	0/1	0			0/1					2	1				1			15:18
20	JACOBSEN Marit Rosberg																		14:15
21	BAKKERUD Ingvild Kristiansen	1/3	33	0/1		1/2					3	1		1					13:14
23	HERREM Camilla	1/1	100		1/1						1	1							25:34
24	SOLBERG Sanna Charlotte	0/2	0		0/2											1			41:37
25	BREISTOL Kristine	2/4	50			2/4						1							4:38
26	TOMAC Marta	1/3	33	0/1		1/2					1								15:56
Bench/Team																			
<b>Totals</b>		28/50	56	5/10	4/6	8/21	3/3	3/3	5/7		12	12	5	2	1	4			

Goalkeepers		Total Shots		6m Shots		Wing Shots		9m Shots		7m Shots		Fast Breaks		Breakthroughs	
No.	Name	S/S	%	S/S	%	S/S	%	S/S	%	S/S	%	S/S	%	S/S	%
12	SOLBERG Silje Margaretha	5/32	16	2/13	15	1/6	17	0/4	0	1/4	25	0/1	0	1/4	25
16	PEDERSEN Andrea Austmo	0/4	0					0/1	0	0/2	0			0/1	0
EG		1													
<b>Totals</b>		5/38	13	2/14	14	1/6	17	0/5	0	1/6	17	0/1	0	1/5	20

Team Shots	Goals	Saves	Missed	Post	Blocked	Total	%
6m Shots	5	3		2		10	50
Wing Shots	4	1		1		6	67
9m Shots	8	6	2	3	2	21	38
7m Shots	3				N/A	3	100
Fast Breaks	3					3	100
Breakthroughs	5	2				7	71
Empty Net Goals							
<b>Totals</b>	28	12	2	6	2	50	56

Number of Attacks: 56, Scoring Efficiency: 50%



# 24th Women's World Championship 2019 Japan



## Bronze Medal Match

### Match Team Statistics

Match No: 95

**NOR 28 - 33 RUS**  
(15 - 18) (13 - 15)

SUN 15 DEC 2019

17:30

Park Dome Kumamoto

Referees: GARCIA I (ESP) / MARIN A (ESP)

### NOR - Norway

### Shots Distribution

#### Players

Goals / Shots

3 ARNTZEN E	6 LOKE H	7 SKOGRAND S	8 WAADE S	10 OFTEDAL S	11 AUNE M	12 SOLBERG S
1/1		0/1	1/1	1/1		
2/2		0/1	1/2	1/3	2/2	
2/3				2/2	1/1	
1-Post			1-Missed 1-Post 1-Blocked	1-Post		

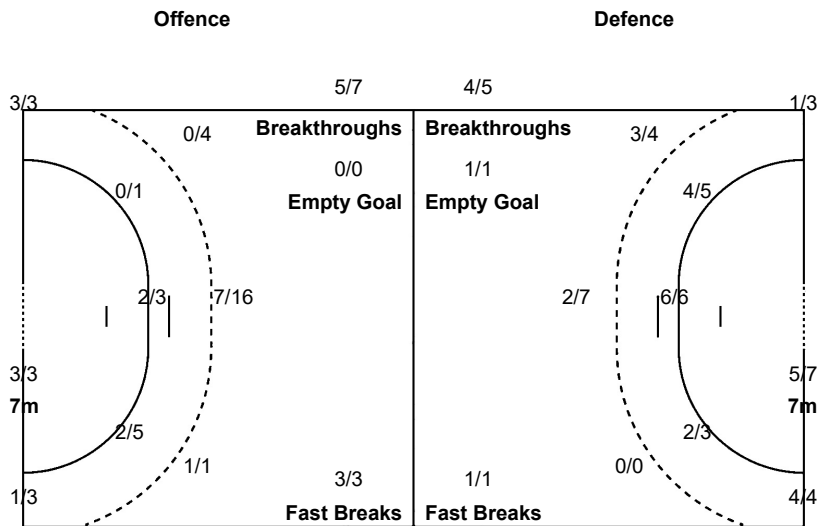
  

13 BRATTSET K	16 PEDERSEN A	19 HOGDAHL M	20 JACOBSEN M	21 BAKKERUD I	23 HERREM C	24 SOLBERG S
				1/1		
		0/1				0/1
1/1					1/1	
1-Post				1-Missed 1-Post		1-Post

25 BREISTOL K	26 TOMAC M
1/2	
	0/2 1/1
1-Blocked	

Team Goals / Shots		
3/4	1/1	2/2
7/13		3/5
6/7	1/3	5/5
2-Missed	6-Post	2-Blocked



Goalkeepers Saves / Shots		
0/4	1/3	0/4
2/5	0/1	1/5
0/6	1/6	0/4

12 SOLBERG S		
0/3	1/3	0/3
2/5	0/1	1/3
0/5	1/5	0/4

16 PEDERSEN A		
0/1		0/1
		0/1
0/1		



# 24th Women's World Championship 2019

## Japan



### Bronze Medal Match

#### Match Team Statistics

Match No: 95

SUN 15 DEC 2019

17:30

Park Dome Kumamoto

**NOR 28 - 33 RUS**

(15 - 18) (13 - 15)

Referees: GARCIA I (ESP) / MARIN A (ESP)

#### RUS - Russia

Players		Shots									Offence		Defence		Penalties			TP	
No.	Name	G/S	%	6m	Wing	9m	7m	FB	BT	EG	AS	TF	ST	BS	YC	2Min	RC		BC
1	SEDOYKINA Anna																		0:42
2	KUZNETSOVA Polina	2/4	50	1/1	1/3														28:17
8	SEN Anna	3/4	75	1/1			2/3							1					29:07
9	GORSHENINA Olga																		
13	VYAKHIREVA Anna	9/11	82	1/1		1/2	3/3		3/4	1/1	10	2	1						55:02
17	BOBROVNIKOVA Vladlena	2/3	67	1/1		1/2					2	5					1		42:43
19	MAKEEVA Kseniia	4/4	100	4/4							3		1	1			2		42:40
23	MIKHAYLICHENKO Elena	3/5	60	1/1		2/4													12:31
25	FOMINA Olga	2/2	100		2/2														16:35
27	ZHILINSKAITE Iana																		18:48
34	MALASHENKO Elizaveta	1/1	100			1/1											1		6:32
36	MANAGAROVA Iuliia	4/4	100	1/1	2/2			1/1					1						43:25
63	KOZHOKAR Kristina	0/1	0	0/1															30:29
67	ILLARIONOVA Anastasiia																		
77	FROLOVA Yaroslava	3/7	43	2/3		0/2	0/1		1/1		6	3							35:21
88	KALININA Viktoriia																		57:48
Bench/Team																			
<b>Totals</b>		33/46	72	12/14	5/7	5/11	5/7	1/1	4/5	1/1	21	10	3	2			4		

Goalkeepers		Total Shots		6m Shots		Wing Shots		9m Shots		7m Shots		Fast Breaks		Breakthroughs	
No.	Name	S/S	%	S/S	%	S/S	%	S/S	%	S/S	%	S/S	%	S/S	%
1	SEDOYKINA Anna	0/2	0							0/2	0				
88	KALININA Viktoriia	12/38	32	3/8	38	1/5	20	6/14	43	0/1	0	0/3	0	2/7	29
<b>Totals</b>		12/40	30	3/8	38	1/5	20	6/14	43	0/3	0	0/3	0	2/7	29

Team Shots	Goals	Saves	Missed	Post	Blocked	Total	%
6m Shots	12	2				14	86
Wing Shots	5	1		1		7	71
9m Shots	5		1	3	2	11	45
7m Shots	5	1	1		N/A	7	71
Fast Breaks	1					1	100
Breakthroughs	4	1				5	80
Empty Net Goals	1					1	100
<b>Totals</b>	33	5	2	4	2	46	72

Number of Attacks: 55, Scoring Efficiency: 60%



# 24th Women's World Championship 2019 Japan



## Bronze Medal Match

### Match Team Statistics

Match No: 95

SUN 15 DEC 2019

17:30

Park Dome Kumamoto

**NOR 28 - 33 RUS**

(15 - 18) (13 - 15)

Referees: GARCIA I (ESP) / MARIN A (ESP)

### RUS - Russia

### Shots Distribution

#### Players

Goals / Shots

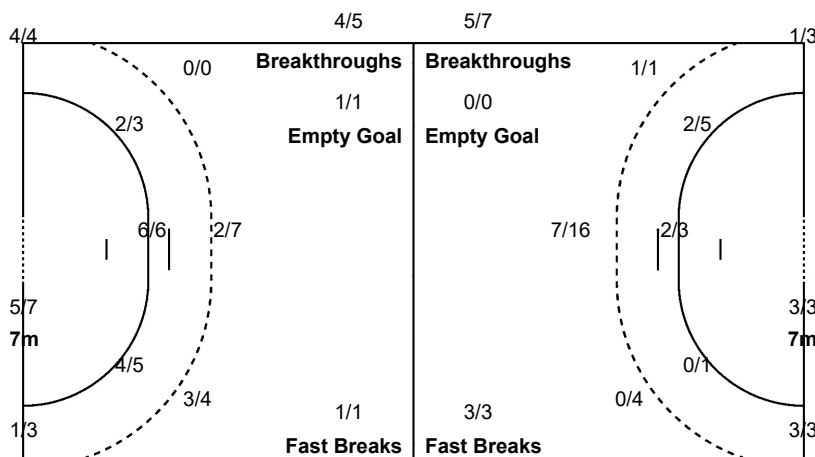
Player	Goals	Shots	Notes
1 SEDOYKINA A	0	0	
2 KUZNETSOVA P	0/1	1/1	1-Post
8 SEN A	0	2/2	1-Missed
9 GORSHENINA O	0	0	
13 VYAKHIREVA A	4/4	1/1	1-Post
17 BOBROVNIKOVA V	1/1	1/1	1-Post
19 MAKEEVA K	1/1	1/1	
23 MIKHAYLICHENKO E	1/1	1/1	1-Missed 1-Post
25 FOMINA O	0	1/1	
27 ZHILINSKAITE I	0	0	
34 MALASHENKO E	1/1	1/1	
36 MANAGAROVA I	1/1	2/2	
63 KOZHOKAR K	0	0/1	
67 ILLARIONOVA A	0	0	
77 FROLOVA Y	1/3	1/1	2-Blocked
88 KALININA V	0	0	

#### Team Goals / Shots

4/4	2/3	4/4
3/5	1/1	4/5
6/6	5/6	4/4

2-Missed 4-Post 2-Blocked

#### Offence



#### Goalkeepers Saves / Shots

1/4	0/1	0/2
6/13		2/5
1/7	2/3	0/5

#### 1 SEDOYKINA A

0	0/1	
0	0/1	

#### 88 KALININA V

1/4		0/2
6/13		2/5
1/7	2/2	0/5

Legend:		
%	Efficiency	
AS	Assists	
G/S	Goals/Shots	
ST	Steals	
2Min	2 Minute Suspensions	
BC	Blue Card	
N/A	Not Applicable	
TO	Turnover	
6m	6 metre Shots	
BS	Blocked Shots	
No.	Uniform Number	
TP	Time Played	
7m	7 metre Shots	
BT	Breakthroughs	
RC	Red Cards	
Wing	Wing Shots	
9m	9 metre Shots	
FB	Fast Breaks	
S/S	Saves/Shots	
YC	Yellow Cards	