



# 24th Women's World Championship 2019

## Japan



### Main Round Group II

### Match Team Statistics

Match No: 84

**RUS 35 - 28 MNE**  
(17 - 16) (18 - 12)

TUE 10 DEC 2019  
15:00  
Park Dome Kumamoto

Referees: KRICHEN S (TUN) / MAKHLOUF S (TUN)

### RUS - Russia

Players		Shots									Offence		Defence		Penalties			TP	
No.	Name	G/S	%	6m	Wing	9m	7m	FB	BT	EG	AS	TF	ST	BS	YC	2Min	RC		BC
1	SEDOYKINA Anna											1							41:21
2	KUZNETSOVA Polina	3/5	60		3/5						1	1							46:22
8	SEN Anna	1/2	50	1/1		0/1					2	3	1	1		1			47:58
9	GORSHENINA Olga																		7:12
11	LAGINA Anastasiia																		15:22
13	VYAKHIREVA Anna	4/7	57		0/1	1/3			3/3		7	3	3			1			49:47
17	BOBROVNIKOVA Vladlena	4/5	80			2/3			2/2		3	1	1			1			33:19
19	MAKEEVA Kseniia										2	2				2			49:12
23	MIKHAYLICHENKO Elena	1/1	100	1/1															1:43
25	FOMINA Olga																		
27	ZHILINSKAITE Iana																		11:55
34	MALASHENKO Elizaveta										1								1:19
36	MANAGAROVA Iuliia	12/12	100	1/1	7/7			3/3		1/1	1	2	1						59:40
63	KOZHOKAR Kristina											1							12:05
67	ILLARIONOVA Anastasiia																		
77	FROLOVA Yaroslava	10/11	91	2/2	0/1		7/7		1/1		5	1							42:45
	Bench/Team															1			
	<b>Totals</b>	<b>35/43</b>	<b>81</b>	<b>5/5</b>	<b>10/14</b>	<b>3/7</b>	<b>7/7</b>	<b>3/3</b>	<b>6/6</b>	<b>1/1</b>	<b>22</b>	<b>15</b>	<b>6</b>	<b>1</b>	<b>1</b>	<b>5</b>			

Goalkeepers		Total Shots		6m Shots		Wing Shots		9m Shots		7m Shots		Fast Breaks		Breakthroughs	
No.	Name	S/S	%	S/S	%	S/S	%	S/S	%	S/S	%	S/S	%	S/S	%
1	SEDOYKINA Anna	5/25	20	0/1	0	1/7	14	2/8	25	0/3	0	1/3	33	1/3	33
11	LAGINA Anastasiia	2/10	20	0/2	0	0/1	0	1/3	33			0/2	0	1/2	50
	<b>Totals</b>	<b>7/35</b>	<b>20</b>	<b>0/3</b>	<b>0</b>	<b>1/8</b>	<b>13</b>	<b>3/11</b>	<b>27</b>	<b>0/3</b>	<b>0</b>	<b>1/5</b>	<b>20</b>	<b>2/5</b>	<b>40</b>

Team Shots	Goals	Saves	Missed	Post	Blocked	Total	%
6m Shots	5					5	100
Wing Shots	10	4				14	71
9m Shots	3	2	1	1		7	43
7m Shots	7				N/A	7	100
Fast Breaks	3					3	100
Breakthroughs	6					6	100
Empty Net Goals	1					1	100
<b>Totals</b>	<b>35</b>	<b>6</b>	<b>1</b>	<b>1</b>		<b>43</b>	<b>81</b>

Number of Attacks: 56, Scoring Efficiency: 63%



# 24th Women's World Championship 2019 Japan



## Main Round Group II

### Match Team Statistics

Match No: 84

TUE 10 DEC 2019

15:00

Park Dome Kumamoto

**RUS 35 - 28 MNE**

(17 - 16) (18 - 12)

Referees: KRICHEN S (TUN) / MAKHLOUF S (TUN)

### RUS - Russia

### Shots Distribution

#### Players

Goals / Shots

1 SEDOYKINA A	2 KUZNETSOVA P	8 SEN A	9 GORSHENINA O	11 LAGINA A	13 VYAKHIREVA A	17 BOBROVNIKOVA V
	1/1 0/1 2/2				1/1 0/1	1/1 1/1
		0/1			1/1 1/1 0/1	1/1
		1/1 0/1				1/1
					1-Post	1-Missed

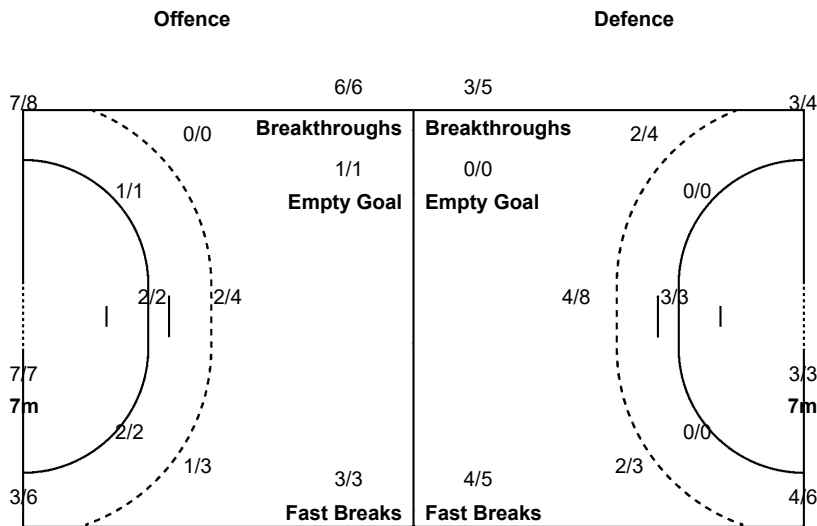
19 MAKEEVA K	23 MIKHAYLICHENKO E	25 FOMINA O	27 ZHILINSKAITE I	34 MALASHENKO E	36 MANAGAROVA I	63 KOZHOKAR K
					2/2 1/1	
					2/2 1/1	
	1/1				3/3 1/1 2/2	

67 ILLARIONOVA A	77 FROLOVA Y
	3/3
	3/4
	4/4

Team Goals / Shots		
8/8	0/1	4/5
4/4		4/5
10/10	2/2	3/6

1-Missed 1-Post



Goalkeepers Saves / Shots		
2/7	1/5	0/4
1/4		1/2
0/4	0/3	2/6

1 SEDOYKINA A		
1/4	1/4	0/4
1/3		1/2
0/1	0/3	1/4

11 LAGINA A		
1/3	0/1	
0/1		
0/3		1/2



# 24th Women's World Championship 2019

## Japan

### Main Round Group II



#### Match Team Statistics

Match No: 84

**RUS 35 - 28 MNE**

(17 - 16) (18 - 12)

TUE 10 DEC 2019

15:00

Park Dome Kumamoto

Referees: KRICHEN S (TUN) / MAKHLOUF S (TUN)

#### MNE - Montenegro

Players		Shots									Offence		Defence		Penalties			TP	
No.	Name	G/S	%	6m	Wing	9m	7m	FB	BT	EG	AS	TF	ST	BS	YC	2Min	RC		BC
1	RAJCIC Marina																		29:20
4	RADICEVIC Jovanka	8/10	80		4/5		3/3	1/2									1		51:32
9	JAUKOVIC Durdina	3/5	60	1/1		1/3			1/1		1	3					1		45:17
15	KLIKOVAC Andrea										2	1	2				1		35:19
16	NENEZIC Ljubica																		7:42
23	UJKIC Dijana	0/1	0		0/1														9:17
27	PREMOVIC Sanja																		
32	BULATOVIC Katarina	4/5	80			4/5					1	2					1		22:18
34	BRMOVIC Tatjana	3/3	100	1/1				2/2			1	1	1						41:06
43	BATINOVIC Marta																		19:20
55	MUGOSA Dijana	1/1	100		1/1														3:13
66	RAMUSOVIC Ema	1/1	100	1/1								1			1				27:03
77	MEHMEDOVIC Majda	3/4	75		2/3			1/1			2	1	1				2		52:44
80	DESPOTOVIC Jelena	2/4	50			1/3			1/1		2	1	1				1		27:21
90	RAICEVIC Milena	3/6	50			2/4			1/2		5	6	1						37:08
96	GRBIC Itana	0/1	0						0/1		1								11:20
	Bench/Team																	1	
<b>Totals</b>		28/41	68	3/3	7/10	8/15	3/3	4/5	3/5		15	16	6			2	7		

Goalkeepers		Total Shots		6m Shots		Wing Shots		9m Shots		7m Shots		Fast Breaks		Breakthroughs	
No.	Name	S/S	%	S/S	%	S/S	%	S/S	%	S/S	%	S/S	%	S/S	%
1	RAJCIC Marina	3/18	17	0/1	0	3/8	38	0/2	0	0/2	0	0/1	0	0/4	0
16	NENEZIC Ljubica	1/7	14	0/2	0	0/2	0	1/1	100	0/2	0				
43	BATINOVIC Marta	2/16	13	0/2	0	1/4	25	1/2	50	0/3	0	0/2	0	0/2	0
	EG	1													
<b>Totals</b>		6/41	15	0/5	0	4/14	29	2/5	40	0/7	0	0/3	0	0/6	0

Team Shots	Goals	Saves	Missed	Post	Blocked	Total	%
6m Shots	3					3	100
Wing Shots	7	1		2		10	70
9m Shots	8	3	2	1	1	15	53
7m Shots	3				N/A	3	100
Fast Breaks	4	1				5	80
Breakthroughs	3	2				5	60
Empty Net Goals							
<b>Totals</b>	28	7	2	3	1	41	68

Number of Attacks: 56, Scoring Efficiency: 50%



# 24th Women's World Championship 2019 Japan



## Main Round Group II

### Match Team Statistics

Match No: 84

TUE 10 DEC 2019

15:00

Park Dome Kumamoto

**RUS 35 - 28 MNE**

(17 - 16) (18 - 12)

Referees: KRICHEN S (TUN) / MAKHLOUF S (TUN)

### MNE - Montenegro

### Shots Distribution

#### Players

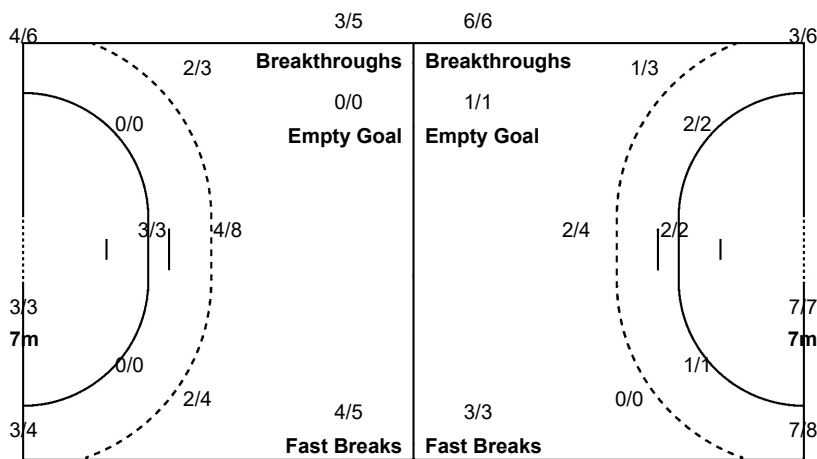
Goals / Shots

1 RAJCIC M	4 RADICEVIC J	9 JAUKOVIC D	15 KLIKOVA A	16 NENEZIC L	23 UJKIC D	27 PREMOVIC S
	2/2 1/2 2/2					
		1/2				
	2/2	1/1				
		1/1	1/2			
	1-Post				1-Post	
32 BULATOVIC K	34 BRMOVIC T	43 BATINOVIC M	55 MUGOSA D	66 RAMUSOVIC E	77 MEHMEDOVIC M	80 DESPOTOVIC J
1/1					1/1 1/1	1/1
2/2	2/2					
					0/1	
	1/1		1/1	1/1	1/1	1/2
1-Post						1-Missed
90 RAICEVIC M	96 GRBIC I					
1/2	0/1					
1-Missed	1-Blocked					

#### Team Goals / Shots

5/7	4/5	4/4
3/4		1/2
4/4	3/3	4/6
2-Missed	3-Post	1-Blocked

#### Offence



#### Goalkeepers Saves / Shots

0/8	1/1	1/5
0/4		1/5
0/10	0/2	3/6

1 RAJCIC M

0/5	1/1	0/3
0/4		
0/1	0/1	2/3

16 NENEZIC L

0/2		1/1
		0/1
0/2		0/1

43 BATINOVIC M

0/1		0/1
		1/4
0/7	0/1	1/2

<b>Legend:</b>	% Efficiency	<b>2Min</b> 2 Minute Suspensions	<b>6m</b> 6 metre Shots	<b>7m</b> 7 metre Shots	<b>9m</b> 9 metre Shots
<b>AS</b> Assists	<b>BC</b> Blue Card	<b>BS</b> Blocked Shots	<b>BT</b> Breakthroughs	<b>FB</b> Fast Breaks	
<b>G/S</b> Goals/Shots	<b>N/A</b> Not Applicable	<b>No.</b> Uniform Number	<b>RC</b> Red Cards	<b>S/S</b> Saves/Shots	
<b>ST</b> Steals	<b>TO</b> Turnover	<b>TP</b> Time Played	<b>Wing</b> Wing Shots	<b>YC</b> Yellow Cards	