



# 24th Women's World Championship 2019 Japan



## Preliminary Round - Group B

### Match Team Statistics

Match No: 52

FRI 6 DEC 2019

15:00

Yamaga City Overall Gymnasium

**BRA 31 - 9 AUS**

(15 - 5) (16 - 4)

Referees: CHENG Y (CHN) / ZHOU Y (CHN)

### BRA - Brazil

Players		Shots									Offence		Defence		Penalties			TP	
No.	Name	G/S	%	6m	Wing	9m	7m	FB	BT	EG	AS	TF	ST	BS	YC	2Min	RC		BC
1	MORESCHI Gabriela										2								53:50
2	de PAULA Bruna										1								18:16
3	MARTINEZ Alexandra	2/2	100				2/2				1	1		1			1		37:07
7	ARAUJO Tamires	2/4	50	2/4								2						1	31:08
9	RODRIGUES BELO Ana Paula	5/8	63	3/5		1/1	0/1		1/1		3								13:08
12	ARENHART Bárbara																		
18	AMORIM TALESKA Eduarda																		14:52
20	ARAUJO Larissa	3/6	50		1/4			2/2											32:14
21	de CASTRO Adriana	1/2	50		0/1		1/1												17:42
22	VIEIRA Samara	2/5	40			2/4			0/1		1			1			1		38:22
24	MENIN Isaura	4/5	80	4/5										1			3		27:39
30	BITOLO Gabriela																		13:14
33	ANASTACIO Jaqueline	4/5	80			2/2		1/1	1/2		6	1							33:46
49	MATIELI MACHADO Patricia	2/2	100						2/2		3		1						19:00
88	COSTA Mariana	4/5	80		2/2			2/3											37:49
96	BOLZAN E SILVA Ana Claudia	2/3	67		0/1			2/2										2	31:53
Bench/Team																			
<b>Totals</b>		31/47	66	9/14	3/8	5/7	3/4	7/8	4/6		17	4	1	3	1		7		

Goalkeepers		Total Shots		6m Shots		Wing Shots		9m Shots		7m Shots		Fast Breaks		Breakthroughs	
No.	Name	S/S	%	S/S	%	S/S	%	S/S	%	S/S	%	S/S	%	S/S	%
1	MORESCHI Gabriela	16/25	64	6/8	75	4/5	80	6/8	75	0/1	0	0/2	0	0/1	0
12	ARENHART Bárbara														
<b>Totals</b>		16/25	64	6/8	75	4/5	80	6/8	75	0/1	0	0/2	0	0/1	0

Team Shots	Goals	Saves	Missed	Post	Blocked	Total	%
6m Shots	9	3	1	1		14	64
Wing Shots	3	2	1	2		8	38
9m Shots	5		1		1	7	71
7m Shots	3	1			N/A	4	75
Fast Breaks	7			1		8	88
Breakthroughs	4	1	1			6	67
Empty Net Goals							
<b>Totals</b>	31	7	4	4	1	47	66

Number of Attacks: 49, Scoring Efficiency: 63%



# 24th Women's World Championship 2019 Japan



## Preliminary Round - Group B

### Match Team Statistics

Match No: 52

FRI 6 DEC 2019

15:00

Yamaga City Overall Gymnasium

**BRA 31 - 9 AUS**

(15 - 5) (16 - 4)

Referees: CHENG Y (CHN) / ZHOU Y (CHN)

### BRA - Brazil

### Shots Distribution

#### Players

Goals / Shots

1 MORESCHI G	2 de PAULA B	3 MARTINEZ A	7 ARAUJO T	9 RODRIGUES BELO A	12 ARENHART B	18 AMORIM TALESKA E
		1/1		1/1		
				2/2		
			1/1	1/3		
			1/1	1/2		
1-Missed 1-Post						
20 ARAUJO L	21 de CASTRO A	22 VIEIRA S	24 MENIN I	30 BITOLO G	33 ANASTACIO J	49 MATIELI MACHADO P
1/1	1/1		1/2			
			1/1		2/3	
						1/1
1/1		1/1			1/1	1/1
2-Post	1-Missed	2-Missed	1-Blocked			
88 COSTA M	96 BOLZAN E SILVA A					
	1/1					
1/1						
	1/1					
1-Post						

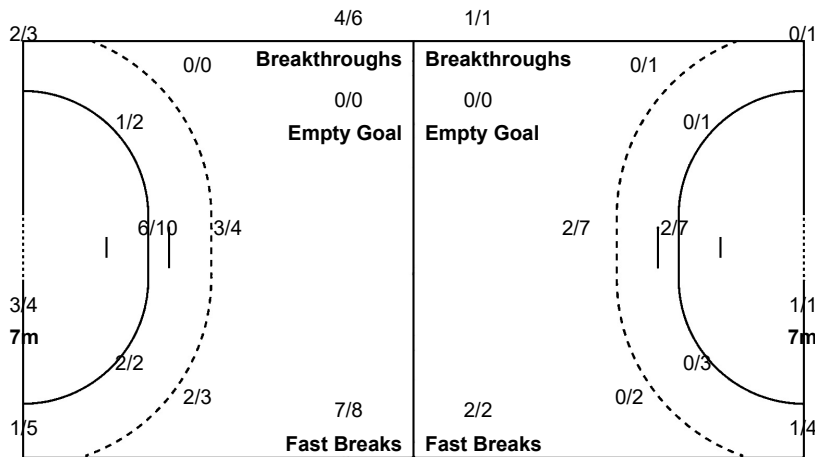
#### Team Goals / Shots

6/7	1/1	9/11
2/2		3/6
5/5		5/6
4-Missed	4-Post	1-Blocked

#### Offence

#### Defence

#### Goalkeepers Saves / Shots



2/3		2/2
3/3	3/3	0/1
3/7	1/1	2/5

#### 1 MORESCHI G

2/3		2/2
3/3	3/3	0/1
3/7	1/1	2/5

#### 12 ARENHART B




# 24th Women's World Championship 2019 Japan



## Preliminary Round - Group B

### Match Team Statistics

Match No: 52

FRI 6 DEC 2019

15:00

Yamaga City Overall Gymnasium

**BRA 31 - 9 AUS**

(15 - 5) (16 - 4)

Referees: CHENG Y (CHN) / ZHOU Y (CHN)

### AUS - Australia

Players		Shots									Offence		Defence		Penalties			TP	
No.	Name	G/S	%	6m	Wing	9m	7m	FB	BT	EG	AS	TF	ST	BS	YC	2Min	RC		BC
1	HARBORT Jemima																		13:05
5	FALLAH Jessica	0/2	0	0/1	0/1							1							21:24
7	MEDED Ana	1/2	50	1/2							1	2							33:46
8	POTOCKI Sally	7/14	50	1/2		2/8	1/1	2/2	1/1			2	1				1		60:00
11	GUIGNARD Emma	0/2	0	0/2								1		1					31:29
12	PLAYER Laura																		3:52
13	VERNAY Manon	0/1	0			0/1													42:01
14	McAFEE Madeleine	0/4	0	0/3		0/1						7							45:03
16	BOYD Rosalie	0/1	0	0/1							1	2							35:25
17	WOOD Jessie	1/3	33		1/3							1							28:38
19	THOMAS Amy																		4:54
21	LIVINGSTONE Manon																		22:23
22	COOPER Heather											2					1		39:24
25	MOWAT Olivia	0/1	0		0/1														7:06
27	FITZGERALD Theresa											2							5:23
30	KEYES Brianna																		26:07
	Bench/Team											1							
	<b>Totals</b>	9/30	30	2/11	1/5	2/10	1/1	2/2	1/1		2	21	1	1			2		

Goalkeepers		Total Shots		6m Shots		Wing Shots		9m Shots		7m Shots		Fast Breaks		Breakthroughs	
No.	Name	S/S	%	S/S	%	S/S	%	S/S	%	S/S	%	S/S	%	S/S	%
1	HARBORT Jemima	2/9	22	1/1	100	0/2	0	0/1	0	1/2	50	0/1	0	0/2	0
13	VERNAY Manon	5/26	19	2/9	22	2/3	67	0/4	0	0/1	0	0/6	0	1/3	33
19	THOMAS Amy	0/3	0	0/2	0					0/1	0				
	<b>Totals</b>	7/38	18	3/12	25	2/5	40	0/5	0	1/4	25	0/7	0	1/5	20

Team Shots	Goals	Saves	Missed	Post	Blocked	Total	%
6m Shots	2	6	1		2	11	18
Wing Shots	1	4				5	20
9m Shots	2	6	1		1	10	20
7m Shots	1				N/A	1	100
Fast Breaks	2					2	100
Breakthroughs	1					1	100
Empty Net Goals							
<b>Totals</b>	9	16	2		3	30	30

Number of Attacks: 49, Scoring Efficiency: 18%



# 24th Women's World Championship 2019 Japan



## Preliminary Round - Group B

### Match Team Statistics

Match No: 52

FRI 6 DEC 2019

15:00

Yamaga City Overall Gymnasium

### BRA 31 - 9 AUS

(15 - 5) (16 - 4)

Referees: CHENG Y (CHN) / ZHOU Y (CHN)

### AUS - Australia

### Shots Distribution

#### Players

Goals / Shots

1 HARBORT J	5 FALLAH J	7 MEDED A	8 POTOCKI S	11 GUIGNARD E	12 PLAYER L	13 VERNAY M
	0/1	0/1	1/3	0/1		
		1/1	3/4	0/1		
			1-Blocked			1-Missed
14 McAFEE M	16 BOYD R	17 WOOD J	19 THOMAS A	21 LIVINGSTONE M	22 COOPER H	25 MOWAT O
0/1		0/1				
2-Blocked	1-Missed					
27 FITZGERALD T	30 KEYES B					

#### Team Goals / Shots

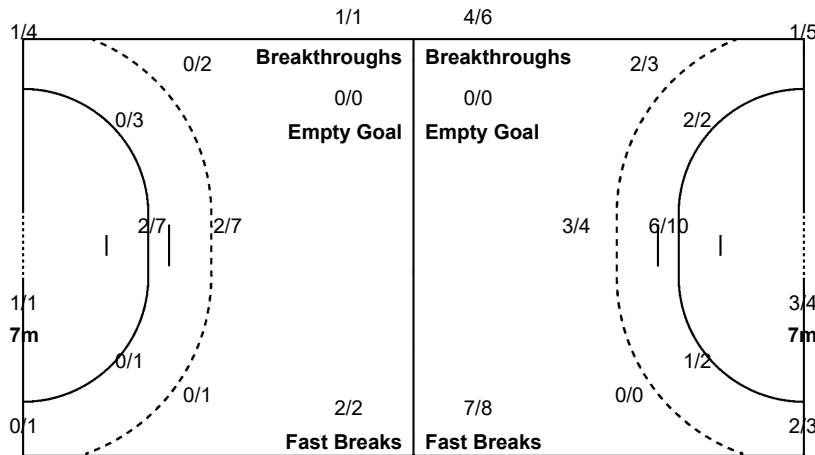
1/3	0/2
0/3	0/3
4/7	0/1
2-Missed	3-Blocked

#### Offence

#### Defence

#### Goalkeepers Saves / Shots

1/7	0/1	2/11
0/2		3/6
0/5		1/6



1 HARBORT J

1/2	0/1	0/1
0/1		1/2
0/2		

13 VERNAY M

0/2		2/10
0/1		2/4
0/3		1/6

19 THOMAS A

0/3		

**Legend:**

% Efficiency	2Min 2 Minute Suspensions	6m 6 metre Shots	7m 7 metre Shots	9m 9 metre Shots
AS Assists	BC Blue Card	BS Blocked Shots	BT Breakthroughs	FB Fast Breaks
G/S Goals/Shots	N/A Not Applicable	No. Uniform Number	RC Red Cards	S/S Saves/Shots
ST Steals	TO Turnover	TP Time Played	Wing Wing Shots	YC Yellow Cards

