



# 25th IHF Women's Junior World Championship 2026



Final Round, 9-10. place

Match Team Statistics

## Sweden 29 - 22 Poland

3.7.2026. 13:45

Match No. 98

(12 - 11) (17 - 11)

Attendance: 300

Jinzhong College Gymnasium

Referees: Ismailj Metalari (MKD) / Nenad Nikolovski (MKD)

### Sweden

Players		Goals / shots										Attack					Def.			Penalties			TP			
#	Surname and name	S	Tot.	%	9m	6m	Wing	7m	FB	Brk.	LD	As.	PC	E7	E2	TF	St.	C7	Blk	YC	2m	R	B			
1	BÖRJESSON Tyra																								0:16	
2	HESTNER OLSSON Selma	S	4/5	80	1/1				1/1	2/3		4		1		2		2						1	45:53	
4	RYDÉN Isabelle	S	5/6	83		4/5				1/1			1			1	1	1	3						45:36	
5	KALLIO Caroline		1/1	100			1/1																		25:33	
9	DITTSCHLAG Märtha	S	4/4	100			3/3		1/1							1									33:51	
11	TÖRDAL Alice		0/2	0	0/2							1													9:16	
12	SAUL Wilma																								1:04	
13	BÖRJESSON Ebba		3/8	38	0/5	1/1		2/2				4				2	1								21:12	
14	LUNDVALL Hanna	S	2/3	67	1/1					1/2			1	1	1	1		1	1						20:30	
15	MAGNUSSON Moa		1/1	100		1/1										1		1							14:24	
16	DANIELSSON Anna	S															2								57:52	
17	KNUTSSON Hilma		0/2	0	0/1						0/1	2				4									33:23	
25	ILVELL Elsa		1/2	50			1/2										1								25:58	
28	BERGLING Klara	S	3/6	50			3/3		0/3																34:24	
32	LILJA Smilla	S	4/4	100	1/1					3/3		3	1			1	1	1							43:09	
35	LUNDIN Lisa		1/1	100						1/1		1				3									7:39	
	Team / bench																									
	<b>TOTAL</b>		29/45	64	3/11	6/7	8/9	2/2	2/5	8/10	0/1	15	3	2	1	18	4	6	4	0	1	0	0			

Goalkeepers		Saves / shots									
#	Surname and name	Tot.	%	9m	6m	Wing	7m	FB	Brk.	LD	
1	BÖRJESSON Tyra										
12	SAUL Wilma	0/1	0				0/1				
16	DANIELSSON Anna	16/37	43	7/10	2/2	2/3	1/3	0/1	4/18		
	<b>TOTAL</b>	16/38	42	7/10	2/2	2/3	1/4	0/1	4/18	0/0	

Coach: Jennie Linnéll

Number of attacks: 59, Efficiency: 49%, Average Duration: 28.10 seconds

### Attack by type of defense

	Shots	9m	6m	Wing	TF	E7	E2
On def. 6-0	4/5	1/1	1/1	1/1	4	0	0
On def. 5-1	21/31	2/10	5/6	7/8	14	2	1
Fastbreak	2/5				0	0	0

### Defense by type

	Total	9m	6m	Wing	Stl.	C7	2m
Def. 6-0	18/43	3/16	0/2	1/4	4	6	0
Fastbreak	1/2				0	0	1

### Attack with superiority / minority / goalkeeper out

	Attack				Reaction		
	Att.	Eff.	Shots	TF	FB	LD	Tot.
6 on 6 (GK out)	1	100%	1/1	0	0/0	0/0	0/0
6 on 6	56	46%	26/38	18			
6 on 5	2	100%	2/2	0			

Player superiority / GK out counted at the end of attack (in case it changes during attack)

### Defense with superiority / minority / goalkeeper out

	Attack				Reaction		
	Att.	Eff.	Shots	TF	FB	LD	Tot.
7 on 6 (GK out)	13	31%	4/10	3	0/1	0/1	0/2
6 on 6 (GK out)	1	100%	1/1	0	0/0	0/0	0/0
6 on 6	45	38%	17/35	10			
6 on 5	1	0%	0/1	0			

Numbers show attacking numbers of opponent. Lower efficiency of opponent means better defense of this team

# Jersey number Tot. Total shooting 6m 6m (line) shooting 9m 9m shooting Wng Wing shooting FB Fastbreak sh. 7m 7m penalty sh.  
 Brk. Breakthrough sh. LD Long distance sh. As. Assists PC Pass clear chance E7 Earned 7m pen. TF Technical faults St. Steals  
 2m 2m punishments C7. Committed 7m E2 Earned 2m pun. YC. Yellow cards R/B Red/Blue cards Blk. Blocks S Starting Line-up

Handball statistics and livescore by Toma-soft ltd (www.toma-soft.hr)



# 25th IHF Women's Junior World Championship 2026



Final Round, 9-10. place

## Match Team Statistics

Match No. 98

## Sweden 29 - 22 Poland

(12 - 11) (17 - 11)

3.7.2026. 13:45

Attendance: 300

Jinzhong College Gymnasium

Referees: Ismailj Metalari (MKD) / Nenad Nikolovski (MKD)

### Shot distribution by player

#### 2 S. Hestner Olsson

2/2		2/2

1 block

#### 4 I. Rydén

1/1	1/1	1/1

1 post 2/2 lob

#### 5 C. Kallio

	1/1	

#### 9 M. Dittschlag

	1/1	1/1
	1/1	

1/1 lob

#### 11 A. Tördal

	0/2	

#### 13 E. Börjesson

1/1		
0/1		
1/1		1/1

2 miss. 2 block

#### 14 H. Lundvall

1/1		1/1

1 miss.

#### 15 M. Magnusson

1/1		

#### 17 H. Knutsson


1 post 1 block

#### 25 E. Ilvell

		1/1

1 post

#### 28 K. Bergling

1/1		1/2
1/1		0/1

1 post

#### 32 S. Lilja

3/3		1/1

#### 35 L. Lundin

1/1		

#### TOTAL

2/2	1/3	2/3
0/1		
11/11	3/3	7/8

4 post 3 miss. 4 block 3/3 lob

### Saves distribution goalkeepers

#### 1 T. Börjesson


#### 12 W. Saul

		0/1

#### 16 A. Danielsson

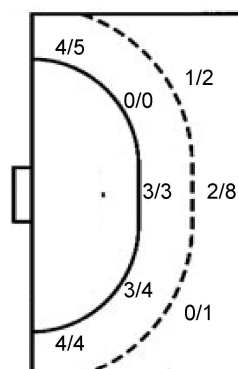
0/2	2/2	
2/3	1/1	4/7
2/9	2/2	3/11

#### TOTAL

0/2	2/2	
2/3	1/1	4/8
2/9	2/2	3/11

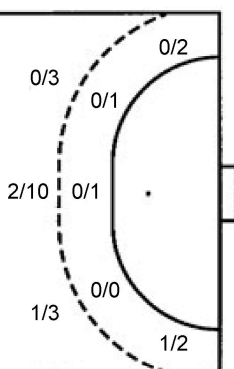
### Shots by position

#### ATTACK



7m penalties	2/2
Fastbreak	2/5
Breakthrough	8/10
Long dist.	0/1

#### DEFENSE



7m penalties	3/6
Fastbreak	1/2
Breakthrough	14/21
Long dist.	0/0

### Shooting statistics

Position	Goals	Sav.	Miss.	Post	Blk.	Total	%
Back (9m)	3	3	2	0	3	11	27
Line (6m)	6	0	0	1	0	7	86
Wing	8	0	0	1	0	9	89
7m penalties	2	0	0	0	0	2	100
Fastbreak	2	2	0	1	0	5	40
Breakthrough	8	0	1	0	1	10	80
<b>Total</b>	<b>29</b>	<b>5</b>	<b>3</b>	<b>3</b>	<b>4</b>	<b>44</b>	<b>66</b>

# Jersey number Tot. Total shooting 6m 6m (line) shooting 9m 9m shooting Wng Wing shooting FB Fastbreak sh. 7m 7m penalty sh.  
 Brk. Breakthrough sh. LD Long distance sh. As. Assists PC Pass clear chance E7 Earned 7m pen. TF Technical faults St. Steals  
 2m 2m punishments C7. Committed 7m E2 Earned 2m pun. YC. Yellow cards R/B Red/Blue cards Blk. Blocks S Starting Line-up

Handball statistics and livescore by Toma-soft ltd (www.toma-soft.hr)



# 25th IHF Women's Junior World Championship 2026



Final Round, 9-10. place

Match Team Statistics

## Sweden 29 - 22 Poland

3.7.2026. 13:45

Match No. 98

(12 - 11) (17 - 11)

Attendance: 300

Jinzhong College Gymnasium

Referees: Ismailj Metalari (MKD) / Nenad Nikolovski (MKD)

### Poland

Players		Goals / shots									Attack					Def.			Penalties			TP			
#	Surname and name	S	Tot.	%	9m	6m	Wing	7m	FB	Brk.	LD	As.	PC	E7	E2	TF	St.	C7	Blk	YC	2m	R	B		
1	KALBARCZYK Joanna																								5:48
3	WRZESINSKA Marta																		1						22:08
4	MACHNIO Michalina		3/5	60	0/2					3/3				1		2									25:46
5	MAZURKIEWICZ Maria	S	5/6	83				2/3		3/3						2			1		1				41:53
6	KĘPKA Lena	S	0/1	0			0/1																		33:35
8	GARDIAN Natalia	S	2/4	50	1/3					1/1			1			1	1	1							28:22
9	GRZESISTA Julia	S	4/9	44	1/3		0/1			3/5			1	2		1			2						37:31
12	SMELCERZ Nina																								24:58
13	PAWŁOWSKA Oliwia		0/1	0		0/1								1					1						24:33
14	SCHLABS Maja		1/8	13	1/6					0/2		1		2	1	3									26:59
22	BIESAGA Maria																1	1							12:00
30	PENTEK Maria	S										1													24:37
42	CHWOJNICKA Zofia	S	2/4	50		0/1	1/2		1/1							1									47:09
44	ZIMNICKA Zuzanna	S	5/12	42	0/2			1/3	0/1	4/6			3			2									34:24
52	KANCZKOWSKA Małgorzata																								4:34
77	SZYMANSKA Emilia		0/1	0					0/1								2								25:27
	Team / bench																								
	TOTAL		22/51	43	3/16	0/2	1/4	3/6	1/2	14/21	0/0	2	5	6	1	13	4	2	4	0	1	0	0		

Goalkeepers		Saves / shots								
#	Surname and name	Tot.	%	9m	6m	Wing	7m	FB	Brk.	LD
1	KALBARCZYK Joanna	1/3	33	1/1	0/2					
12	SMELCERZ Nina	2/14	14	1/2	0/2	0/4	0/1	1/2	0/3	
30	PENTEK Maria	2/17	12	1/3	0/2	0/4	0/1	1/2	0/5	
	TOTAL	5/34	15	3/6	0/6	0/8	0/2	2/4	0/8	0/0

Coach: Marek Jagodziński

Number of attacks: 60, Efficiency: 37%, Average Duration: 32.33 seconds

### Attack by type of defense

	Shots	9m	6m	Wing	TF	E7	E2
On def. 6-0	18/43	3/16	0/2	1/4	13	6	1
Fastbreak	1/2				0	0	0

### Defense by type

	Total	9m	6m	Wing	Stl.	C7	2m
Def. 6-0	4/5	1/1	1/1	1/1	0	0	0
Def. 5-1	21/31	2/10	5/6	7/8	4	2	0
Fastbreak	2/5				0	0	1

### Attack with superiority / minority / goalkeeper out

	Attack				Reaction		
	Att.	Eff.	Shots	TF	FB	LD	Tot.
7 on 6 (GK out)	13	31%	4/10	3	0/1	0/1	0/2
6 on 6 (GK out)	1	100%	1/1	0	0/0	0/0	0/0
6 on 6	45	38%	17/35	10			
6 on 5	1	0%	0/1	0			

Player superiority / GK out counted at the end of attack (in case it changes during attack)

### Defense with superiority / minority / goalkeeper out

	Attack				Reaction		
	Att.	Eff.	Shots	TF	FB	LD	Tot.
6 on 6 (GK out)	1	100%	1/1	0	0/0	0/0	0/0
6 on 6	56	46%	26/38	18			
6 on 5	2	100%	2/2	0			

Numbers show attacking numbers of opponent. Lower efficiency of opponent means better defense of this team

# Jersey number Tot. Total shooting 6m 6m (line) shooting 9m 9m shooting Wng Wing shooting FB Fastbreak sh. 7m 7m penalty sh.  
 Brk. Breakthrough sh. LD Long distance sh. As. Assists PC Pass clear chance E7 Earned 7m pen. TF Technical faults St. Steals  
 2m 2m punishments C7. Committed 7m E2 Earned 2m pun. YC. Yellow cards R/B Red/Blue cards Blk. Blocks S Starting Line-up

Handball statistics and livescore by Toma-soft ltd (www.toma-soft.hr)



# 25th IHF Women's Junior World Championship 2026



Final Round, 9-10. place

## Match Team Statistics

Match No. 98

## Sweden 29 - 22 Poland

(12 - 11) (17 - 11)

3.7.2026. 13:45

Attendance: 300

Jinzhong College Gymnasium

Referees: Ismailj Metalari (MKD) / Nenad Nikolovski (MKD)

### Shot distribution by player

#### 3 M. Wrzesińska


#### 4 M. Machnio

		1/1
1/1		1/1

2 block

#### 5 M. Mazurkiewicz

2/2		
3/3		

1 post

#### 6 L. Kepka


1 miss.

#### 8 N. Gardian

2/2	0/1	

1 miss.

#### 9 J. Grzesista

	0/1	
	0/1	1/1
	0/1	3/4

1 post

#### 13 O. Pawłowska

		0/1

#### 14 M. Schlabs

	0/1	
		0/2
		1/2

2 miss. 1 block

#### 22 M. Biesaga


#### 42 Z. Chwojnicka

1/2		
0/1		1/1

#### 44 Z. Zimnicka

		2/3
1/2		2/3

1 post 2 miss. 1 block

#### 52 M. Kanczkowska


#### 77 E. Szymańska

0/1		

#### TOTAL

2/2	0/2	
1/3	0/1	4/8
7/9	0/2	8/11

3 post 6 miss. 4 block

### Saves distribution goalkeepers

#### 1 J. Kalbarczyk

	1/1	
		0/1

#### 12 N. Smelcerz

	1/1	0/2
0/3	0/2	1/5

#### 30 M. Pentek

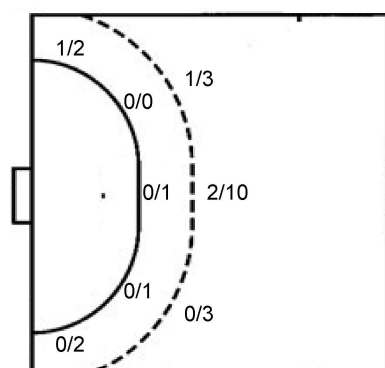
0/2	0/1	1/1
1/1		
0/8	0/1	0/2

#### TOTAL

0/2	2/3	1/3
1/1		
0/11	0/3	1/8

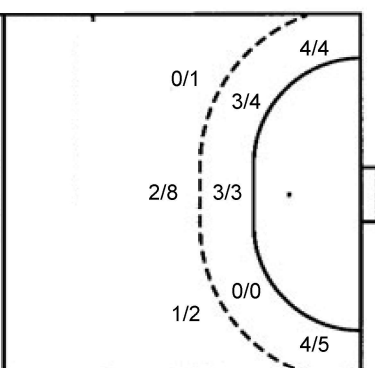
### Shots by position

#### ATTACK



7m penalties 3/6  
Fastbreak 1/2  
Breakthrough 14/21  
Long dist. 0/0

#### DEFENSE



7m penalties 2/2  
Fastbreak 2/5  
Breakthrough 8/10  
Long dist. 0/1

### Shooting statistics

Position	Goals	Sav.	Miss.	Post	Blk.	Total	%
Back (9m)	3	7	2	0	4	16	19
Line (6m)	0	2	0	0	0	2	0
Wing	1	2	1	0	0	4	25
7m penalties	3	1	1	1	0	6	50
Fastbreak	1	0	1	0	0	2	50
Breakthrough	14	4	1	2	0	21	67
<b>Total</b>	<b>22</b>	<b>16</b>	<b>6</b>	<b>3</b>	<b>4</b>	<b>51</b>	<b>43</b>

# Jersey number Tot. Total shooting 6m 6m (line) shooting 9m 9m shooting Wng Wing shooting FB Fastbreak sh. 7m 7m penalty sh.  
Brk. Breakthrough sh. LD Long distance sh. As. Assists PC Pass clear chance E7 Earned 7m pen. TF Technical faults St. Steals  
2m 2m punishments C7. Committed 7m E2 Earned 2m pun. YC. Yellow cards R/B Red/Blue cards Blk. Blocks S Starting Line-up

Handball statistics and livescore by Toma-soft ltd (www.toma-soft.hr)

