



25th IHF Women's Junior World Championship 2026



Final Round, 11-12. place

Match Team Statistics

Match No. 97

Czechia 32 - 37 Romania

(16 - 17) (16 - 20)

3.7.2026. 11:30

Attendance: 200

Jinzhong College Gymnasium

Referees: Stefan Berdic (SRB) / Filip Sorak (SRB)

Czechia

#	Surname and name	S	Goals / shots								Attack					Def.			Penalties			TP					
			Tot.	%	9m	6m	Wing	7m	FB	Brk.	LD	As.	PC	E7	E2	TF	St.	C7	Blk	YC	2m		R	B			
2	KRAPKOVA Michaela	S	3/3	100			2/2		1/1								1										60:00
6	PAZDEROVA Tereza		2/4	50			2/3		0/1								1										27:40
7	VRBKOVA Viktorie											1															5:41
9	CHALOUPKOVA Anna		0/1	0				0/1							1		1						1				12:52
10	MATEJKOVA Regina		3/5	60	2/3					1/2		1		1	1	1											33:32
11	HOLENAKOVA Melisa	S	1/4	25	0/1			0/1		1/2		3					1						1				31:38
12	CHVATALOVA Adela											1															25:05
13	PEJSOVA Viktorie	S	4/7	57	1/3	1/1				2/3		4	2	1	1	6	2		1								38:49
16	MASARIKOVA Monika																										0:14
19	POSPISILOVA Tereza	S												1		2		1	1								20:34
20	BABOROVSKA Natálie		5/7	71		1/1				4/6				1	1	1		1									27:35
21	POLANKOVA Markéta	S	5/6	83	2/2		2/3		1/1			1				2		1					1				46:14
22	FILIPKOVA Tereza	S	5/11	45	1/6	1/1		2/3		1/1			1	1	1	2											22:32
25	KNEDLOVA Viktorie		4/5	80		3/4				1/1						1			1				2				39:24
26	CHODOUNSKA Anna																										
27	BUCHTOVA Andrea	S																									28:10
	Team / bench																										
	TOTAL		32/53	60	6/15	6/7	6/8	2/5	2/3	10/15	0/0	11	3	5	4	15	5	4	3	0	5	0	0				

#	Surname and name	Saves / shots								
		Tot.	%	9m	6m	Wing	7m	FB	Brk.	LD
12	CHVATALOVA Adela	4/18	22	2/7	0/3		0/1	1/2	1/5	
16	MASARIKOVA Monika	0/1	0				0/1			
27	BUCHTOVA Andrea	4/26	15	0/5	1/8	1/3	0/2	0/2	2/6	
	TOTAL	8/45	18	2/12	1/11	1/3	0/4	1/4	3/11	0/0

Coach: Dušan Poloz

Number of attacks: 64, Efficiency: 50%, Average Duration: 25.44 seconds

Attack by type of defense

	Shots	9m	6m	Wing	TF	E7	E2
On def. 6-0	27/44	6/15	5/6	6/8	15	5	4
Fastbreak	2/3				0	0	0

Defense by type

	Total	9m	6m	Wing	Stl.	C7	2m
Def. 6-0	30/43	10/17	10/11	2/3	5	4	1
Fastbreak	3/4				0	0	4

Attack with superiority / minority / goalkeeper out

	Attack				Reaction		
	Att.	Eff.	Shots	TF	FB	LD	Tot.
7 on 6 (GK out)	7	57%	4/5	2	0/0	0/0	0/0
7 on 5 (GK out)	1	0%	0/0	1	0/0	0/0	0/0
6 on 6 (GK out)	7	71%	5/6	1	1/1	0/0	1/1
6 on 5 (GK out)	1	0%	0/0	1	0/0	0/0	0/0
6 on 6	41	49%	20/32	9			
6 on 5	6	50%	3/6	0			
5 on 6	1	0%	0/0	1			

Player superiority / GK out counted at the end of attack (in case it changes during attack)

Defense with superiority / minority / goalkeeper out

	Attack				Reaction		
	Att.	Eff.	Shots	TF	FB	LD	Tot.
7 on 6 (GK out)	4	50%	2/2	2	1/1	0/0	1/1
6 on 6 (GK out)	5	100%	5/5	0	0/0	0/0	0/0
6 on 6	43	51%	22/30	13			
5 on 6	1	0%	0/1	0			
6 on 5	11	73%	8/10	1			

Numbers show attacking numbers of opponent. Lower efficiency of opponent means better defense of this team

Jersey number Tot. Total shooting 6m 6m (line) shooting 9m 9m shooting Wng Wing shooting FB Fastbreak sh. 7m 7m penalty sh.
 Brk. Breakthrough sh. LD Long distance sh. As. Assists PC Pass clear chance E7 Earned 7m pen. TF Technical faults St. Steals
 2m 2m punishments C7. Committed 7m E2 Earned 2m pun. YC. Yellow cards R/B Red/Blue cards Blk. Blocks S Starting Line-up

Handball statistics and livescore by Toma-soft ltd (www.toma-soft.hr)



25th IHF Women's Junior World Championship 2026



Final Round, 11-12. place

Match Team Statistics

Match No. 97

Czechia 32 - 37 Romania

(16 - 17) (16 - 20)

3.7.2026. 11:30

Attendance: 200

Jinzhong College Gymnasium

Referees: Stefan Berdic (SRB) / Filip Sorak (SRB)

Shot distribution by player

2 M. Krapková

		1/1
1/1		1/1

6 T. Pazderová

1/2		

1 miss. 1/1 lob

7 V. Vrbková

9 A. Chaloupková

1 post

10 R. Matějková

		0/1
1/2		2/2

11 M. Holeňáková

0/1		
	1/1	0/1

1 miss.

13 V. Pejšová

		1/1
1/1		1/1
1/1		0/1

1 post 1 block

19 T. Pospíšilová

20 N. Baborovská

1/1		
1/2		3/3

1 post

21 M. Polanková

4/5		
		1/1

22 T. Filípková

1/2	0/1	1/1
1/2		2/2

1 post 2 block

25 V. Knedlová

	0/1	
2/2		2/2

26 A. Chodounská

TOTAL

6/8	0/1	1/2
2/4	0/1	3/3
7/10	1/1	11/13

4 post 2 miss. 3 block 1/1 lob

Saves distribution goalkeepers

12 A. Chvátalová

	1/1	1/2
1/2		0/1
0/6	0/1	1/5

16 M. Masaříková

0/1		

27 A. Buchtová

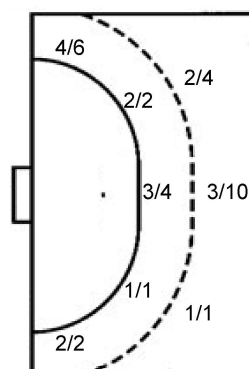
0/2		0/1
1/4	1/1	1/2
1/6	0/1	0/8

TOTAL

0/2	1/1	1/3
2/6	1/1	1/3
1/13	0/2	1/13

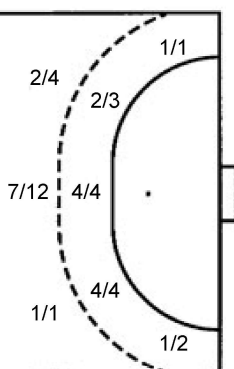
Shots by position

ATTACK



7m penalties 2/5
Fastbreak 2/3
Breakthrough 10/15
Long dist. 0/0

DEFENSE



7m penalties 4/4
Fastbreak 3/4
Breakthrough 8/12
Long dist. 0/0

Shooting statistics

Position	Goals	Sav.	Miss.	Post	Blk.	Total	%
Back (9m)	6	5	0	1	3	15	40
Line (6m)	6	1	0	0	0	7	86
Wing	6	2	0	0	0	8	75
7m penalties	2	2	0	1	0	5	40
Fastbreak	2	0	1	0	0	3	67
Breakthrough	10	2	1	2	0	15	67
Total	32	12	2	4	3	53	60

Jersey number Tot. Total shooting 6m 6m (line) shooting 9m 9m shooting Wng Wing shooting FB Fastbreak sh. 7m 7m penalty sh.
Brk. Breakthrough sh. LD Long distance sh. As. Assists PC Pass clear chance E7 Earned 7m pen. TF Technical faults St. Steals
2m 2m punishments C7. Committed 7m E2 Earned 2m pun. YC. Yellow cards R/B Red/Blue cards Blk. Blocks S Starting Line-up

Handball statistics and livescore by Toma-soft ltd (www.toma-soft.hr)



25th IHF Women's Junior World Championship 2026



Final Round, 11-12. place

Match Team Statistics
Match No. 97

Czechia 32 - 37 Romania
(16 - 17) (16 - 20)

3.7.2026. 11:30
Attendance: 200
Jinzhong College Gymnasium

Referees: Stefan Berdic (SRB) / Filip Sorak (SRB)

Romania

Players		Goals / shots										Attack					Def.			Penalties				TP	
#	Surname and name	S	Tot.	%	9m	6m	Wing	7m	FB	Brk.	LD	As.	PC	E7	E2	TF	St.	C7	Blk	YC	2m	R	B		
1	TUNARIU Beatrice	S																							18:50
2	NITĂ Alexia-Maria	S	3/6	50	0/1		1/1		2/3	0/1				1		1		1	2						46:13
4	MARTON Evelyn-Vivienn		1/1	100						1/1		1						1							8:02
5	VOICU Maria-Alexandra		1/2	50						1/2		2													14:02
6	MIHĂILĂ Daria-Florentina																								14:50
7	CIUBOTARU Mioara-Bianca																	1						1	26:33
8	DAMIAN Teodora-Lavinia	S	15/18	83	3/5	2/2		4/4	1/1	5/6		1	1	2	3	4	1								57:20
11	STAN Ana-Martina	S	5/6	83	2/2	3/3				0/1		1					3	1	1				2		39:15
12	NITĂ Ioana																								22:34
16	ROȘU Florentina-Anastasia															1									14:27
17	SERBAN Anamaria	S	6/7	86	5/6					1/1		6	2			3	1	1	2						52:08
20	UTAN Daria-Iuliana	S	5/6	83		5/6								2		2									35:01
22	TRUSCĂ Sara-Ana-Maria	S	1/2	50			1/2					1				1									59:49
37	HRENARU Ioana-Codruta																								2:39
59	RUSU Riana																								
84	BODIJAR Enryka -Valentina		0/3	0	0/3												2								8:17
Team / bench																									
TOTAL			37/51	73	10/17	10/11	2/3	4/4	3/4	8/12	0/0	12	4	4	4	16	4	5	3	0	4	0	0		

Goalkeepers		Saves / shots									
#	Surname and name	Tot.	%	9m	6m	Wing	7m	FB	Brk.	LD	
1	TUNARIU Beatrice	4/14	29	3/5	0/1	1/3	0/1	0/1	0/3		
12	NITĂ Ioana	7/21	33	1/3	1/5	1/2	2/3	0/1	2/7		
16	ROȘU Florentina-Anastasia	1/9	11	1/3	0/1	0/3			0/2		
TOTAL		12/44	27	5/11	1/7	2/8	2/4	1/2	2/12	0/0	

Coach: Constantin-Alin Oprescu

Number of attacks: 64, Efficiency: 58%, Average Duration: 30.81 seconds

Attack by type of defense

	Shots	9m	6m	Wing	TF	E7	E2
On def. 6-0	30/43	10/17	10/11	2/3	16	4	4
Fastbreak	3/4				0	0	0

Defense by type

	Total	9m	6m	Wing	Stl.	C7	2m
Def. 6-0	27/44	6/15	5/6	6/8	4	5	0
Fastbreak	2/3				0	0	4

Attack with superiority / minority / goalkeeper out

	Attack				Reaction		
	Att.	Eff.	Shots	TF	FB	LD	Tot.
7 on 6 (GK out)	4	50%	2/2	2	1/1	0/0	1/1
6 on 6 (GK out)	5	100%	5/5	0	0/0	0/0	0/0
6 on 6	43	51%	22/30	13			
5 on 6	1	0%	0/1	0			
6 on 5	11	73%	8/10	1			

Player superiority / GK out counted at the end of attack (in case it changes during attack)

Defense with superiority / minority / goalkeeper out

	Attack				Reaction		
	Att.	Eff.	Shots	TF	FB	LD	Tot.
7 on 6 (GK out)	7	57%	4/5	2	0/0	0/0	0/0
7 on 5 (GK out)	1	0%	0/0	1	0/0	0/0	0/0
6 on 6 (GK out)	7	71%	5/6	1	1/1	0/0	1/1
6 on 5 (GK out)	1	0%	0/0	1	0/0	0/0	0/0
6 on 6	41	49%	20/32	9			
6 on 5	6	50%	3/6	0			
5 on 6	1	0%	0/0	1			

Numbers show attacking numbers of opponent. Lower efficiency of opponent means better defense of this team

Jersey number Tot. Total shooting 6m 6m (line) shooting 9m 9m shooting Wng Wing shooting FB Fastbreak sh. 7m 7m penalty sh.
Brk. Breakthrough sh. LD Long distance sh. As. Assists PC Pass clear chance E7 Earned 7m pen. TF Technical faults St. Steals
2m 2m punishments C7. Committed 7m E2 Earned 2m pun. YC. Yellow cards R/B Red/Blue cards Blk. Blocks S Starting Line-up



25th IHF Women's Junior World Championship 2026



Final Round, 11-12. place

Match Team Statistics

Match No. 97

Czechia 32 - 37 Romania

(16 - 17) (16 - 20)

3.7.2026. 11:30

Attendance: 200

Jinzhong College Gymnasium

Referees: Stefan Berdic (SRB) / Filip Sorak (SRB)

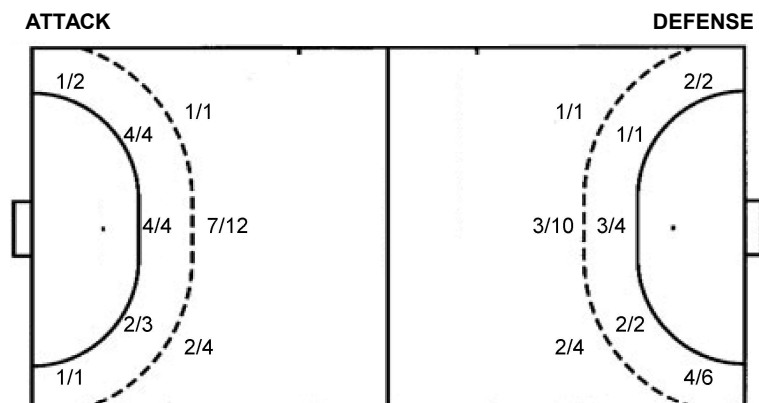
Shot distribution by player

2 A. Nită 1/1 1/2 1 block	4 E. Marton 1/1	5 M. Voicu 1/1 1 miss.	6 D. Mihăilă	7 M. Ciubotaru	8 T. Damian 2/2 0/1 2/2 5/5 1/1 5/5 1 post 1 block	11 A. Stan 1/2 3/3 1/1
17 A. Serban 1/1 1/1 2/2 1 miss.	20 D. Utan 0/1 2/2 3/3	22 S. Truscă 0/1 1/1 lob	37 I. Hrenaru	59 R. Rusu	84 E. Bodijar 0/1 1 block	TOTAL 2/2 0/1 2/3 4/6 0/1 2/3 12/13 2/2 12/13 1 post 2 miss. 3 block 1/1 lob

Saves distribution goalkeepers

1 B. Tunariu 1/2 0/1 1/2 0/3 1/4 0/1 1/1	12 I. Nită 1/3 1/1 1/1 0/1 1/1 2/4 1/10	16 F. Rosu 0/3 1/1 0/2 0/2	TOTAL 2/8 1/1 1/2 2/4 1/1 0/3 3/10 0/1 2/13
--	---	--	---

Shots by position



7m penalties 4/4
Fastbreak 3/4
Breakthrough 8/12
Long dist. 0/0

7m penalties 2/5
Fastbreak 2/3
Breakthrough 10/15
Long dist. 0/0

Shooting statistics

Position	Goals	Sav.	Miss.	Post	Blk.	Total	%
Back (9m)	10	2	1	1	3	17	59
Line (6m)	10	1	0	0	0	11	91
Wing	2	1	0	0	0	3	67
7m penalties	4	0	0	0	0	4	100
Fastbreak	3	1	0	0	0	4	75
Breakthrough	8	3	1	0	0	12	67
Total	37	8	2	1	3	51	73

Jersey number Tot. Total shooting 6m 6m (line) shooting 9m 9m shooting Wng Wing shooting FB Fastbreak sh. 7m 7m penalty sh.
Brk. Breakthrough sh. LD Long distance sh. As. Assists PC Pass clear chance E7 Earned 7m pen. TF Technical faults St. Steals
2m 2m punishments C7. Committed 7m E2 Earned 2m pun. YC. Yellow cards R/B Red/Blue cards Blk. Blocks S Starting Line-up

Handball statistics and livescore by Toma-soft ltd (www.toma-soft.hr)

