





# 25th IHF Women's Junior World Championship 2026



Final Round, 17-20. place

## Match Team Statistics

Match No. 92

## Brazil 32 - 33 Croatia

(13 - 13) (13 - 13) (SO: 6 - 7)

2.7.2026. 18:30

Attendance: 500

Zhongdu Campus

Gymnasium

Referees: Makrem Ben Dahou (TUN) / Rochdi Zoghlami (TUN)

### Shot distribution by player

#### 2 C. Nery

1/1		

#### 5 A. Gonçalves Nunes

1/2		
2/2	1/1	
	1/1	

#### 6 J. Monteiro Da Silva

		1/1
	0/1	

1 miss.

#### 8 L. Ferreira


#### 9 L. Da Silva Vitor

0/1		1/1
		0/2
3/3	0/1	0/1

1 post 1 miss.

#### 10 A. Da Silva Braga

		1/1

#### 13 L. Grassmann Fúculo


#### 14 S. Hevelin De Oliveira Martins

		1/1
1/1		1/1
2/3	1/1	1/2

1 post 1 miss. 2 block

#### 15 G. Caraciolo Paiva Tavares


#### 19 F. Cantanhede Pereira


#### 20 N. Teixeira De Castro

		1/1
		2/2

1/1 lob

#### 25 R. Cardoso Brandao Ladeira

	0/1	
2/2	1/4	2/3

#### 28 L. Flores Da Silva Pereira

	1/1	3/3

#### 31 B. De Almeida Mendes


### TOTAL

2/4	0/1	3/3
3/3	1/1	2/4
7/8	4/9	9/12

2 post 3 miss. 2 block 1/1 lob

### Saves distribution goalkeepers

#### 21 É. Gomes Da Silva

0/2		0/1
4/8	1/1	2/4
1/8	0/1	1/13

#### 27 S. Ludwig Kieling

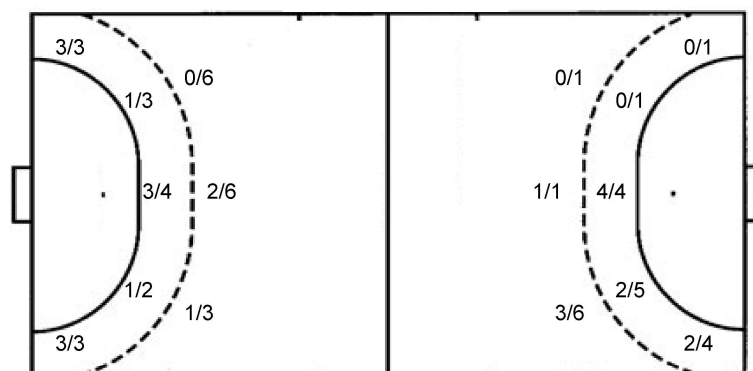
		0/1
0/2	0/1	

### TOTAL

0/2		0/2
4/8	1/1	2/4
1/10	0/2	1/13

### Shots by position

#### ATTACK



7m penalties 9/12  
Fastbreak 3/3  
Breakthrough 5/7  
Long dist. 1/1

#### DEFENSE

7m penalties 14/15  
Fastbreak 2/2  
Breakthrough 5/7  
Long dist. 0/0

### Shooting statistics

Position	Goals	Sav.	Miss.	Post	Blk.	Total	%
Back (9m)	3	8	1	1	2	15	20
Line (6m)	5	3	1	0	0	9	56
Wing	6	0	0	0	0	6	100
7m penalties	9	2	0	1	0	12	75
Fastbreak	3	0	0	0	0	3	100
Breakthrough	5	1	1	0	0	7	71
<b>Total</b>	<b>31</b>	<b>14</b>	<b>3</b>	<b>2</b>	<b>2</b>	<b>52</b>	<b>60</b>

# Jersey number Tot. Total shooting 6m 6m (line) shooting 9m 9m shooting Wng Wing shooting FB Fastbreak sh. 7m 7m penalty sh.  
Brk. Breakthrough sh. LD Long distance sh. As. Assists PC Pass clear chance E7 Earned 7m pen. TF Technical faults St. Steals  
2m 2m punishments C7. Committed 7m E2 Earned 2m pun. YC. Yellow cards R/B Red/Blue cards Blk. Blocks S Starting Line-up

Handball statistics and livescore by Toma-soft ltd (www.toma-soft.hr)



# 25th IHF Women's Junior World Championship 2026



Final Round, 17-20. place

Match Team Statistics  
Match No. 92

**Brazil 32 - 33 Croatia**  
(13 - 13) (13 - 13) (SO: 6 - 7)

2.7.2026. 18:30  
Attendance: 500  
Zhongdu Campus  
Gymnasium

Referees: Makrem Ben Dahou (TUN) / Rochdi Zoghلامي (TUN)

## Croatia

Players		Goals / shots										Attack				Def.			Penalties				TP		
#	Surname and name	S	Tot.	%	9m	6m	Wing	7m	FB	Brk.	LD	As.	PC	E7	E2	TF	St.	C7	Bik	YC	2m	R		B	
1	PUDIĆ Lara	S																							37:53
2	ERCEGOVIĆ Nika																								0:01
3	IVANČIĆ Una	S																1	1		1				28:10
5	ČIČAK Antea	S	7/10	70	2/3	3/4		1/1		1/2		3	1	2		2	1								52:49
7	RENIĆ Lucija		2/5	40		0/2	1/2		1/1					1		1									26:53
11	BRUSIĆ Mirna	S	5/9	56	0/2	1/1		2/3	1/1	1/2		1	2					1			1				58:46
12	KRALJEVIĆ Nika																								20:11
18	ZUBAC Josipa	S	3/3	100	1/1	1/1				1/1		1		1	1	3									38:25
20	ČOVIĆ Tara	S	1/2	50			0/1	1/1						1	1	1	1								60:00
21	ĐELEKOVIĆ Tara	S	5/6	83	1/2			2/2		2/2		4	3	3	2	7	1	1	1		1				58:19
23	ROGOŠIĆ Gabriela																								
25	DANANIĆ Dora		1/2	50			1/2																		15:51
26	JANKOVIĆ Leona		0/1	0		0/1												1			1				9:22
31	MARINIĆ Lorena		1/1	100		1/1											1								11:56
33	JOSIPOVIĆ Vlatka																								
34	MIKLIĆ Jana		8/8	100				8/8																	1:24
	Team / bench																								
	TOTAL		33/47	70	4/8	6/10	2/5	14/15	2/2	5/7	0/0	9	6	8	4	14	3	5	2	0	4	0	0		

Goalkeepers		Saves / shots									
#	Surname and name	Tot.	%	9m	6m	Wing	7m	FB	Brk.	LD	
1	PUDIĆ Lara	8/27	30	4/6	2/6	0/4	1/5	0/2	1/4		
12	KRALJEVIĆ Nika	6/18	33	4/5	1/2	0/2	1/6	0/1	0/2		
	TOTAL	14/45	31	8/11	3/8	0/6	2/11	0/3	1/6	0/0	

Coach: **Vedran Krkač**

Number of attacks: 60, Efficiency: 55%, Average Duration: 35.23 seconds

### Attack by type of defense

	Shots	9m	6m	Wing	TF	E7	E2
On def. 6-0	9/18	3/7	3/6	0/1	6	6	3
On def. 5-1	8/12	1/1	3/4	2/4	8	2	1
Fastbreak	2/2				0	0	0

### Defense by type

	Total	9m	6m	Wing	Stl.	C7	2m
Def. 6-0	12/21	3/10	3/5	4/4	1	4	0
Def. 5-1	7/14	0/4	2/4	2/2	2	1	0
Def. press.	0/1	0/1	0/0	0/0	0	0	0
Fastbreak	3/3				0	0	4

### Attack with superiority / minority / goalkeeper out

	Attack				Reaction		
	Att.	Eff.	Shots	TF	FB	LD	Tot.
7 on 6 (GK out)	1	0%	0/0	1	1/1	0/0	1/1
6 on 6 (GK out)	3	67%	2/2	1	0/0	1/1	1/1
5 on 6 (GK out)	1	100%	1/1	0	0/0	0/0	0/0
6 on 6	39	46%	18/28	11			
5 on 6	8	88%	7/8	0			
6 on 5	8	63%	5/7	1			

Player superiority / GK out counted at the end of attack (in case it changes during attack)

### Defense with superiority / minority / goalkeeper out

	Attack				Reaction		
	Att.	Eff.	Shots	TF	FB	LD	Tot.
7 on 6 (GK out)	2	50%	1/2	0	0/0	0/0	0/0
7 on 5 (GK out)	2	50%	1/2	0	0/0	0/0	0/0
6 on 6 (GK out)	6	33%	2/3	3	1/1	0/0	1/1
6 on 6	39	49%	19/30	9			
6 on 5	9	89%	8/9	0			
6 on 4	2	0%	0/2	0			
5 on 6	1	100%	1/1	0			

Numbers show attacking numbers of opponent. Lower efficiency of opponent means better defense of this team

# Jersey number Tot. Total shooting 6m 6m (line) shooting 9m 9m shooting Wng Wing shooting FB Fastbreak sh. 7m 7m penalty sh.  
Brk. Breakthrough sh. LD Long distance sh. As. Assists PC Pass clear chance E7 Earned 7m pen. TF Technical faults St. Steals  
2m 2m punishments C7. Committed 7m E2 Earned 2m pun. YC. Yellow cards R/B Red/Blue cards Blk. Blocks S Starting Line-up



# 25th IHF Women's Junior World Championship 2026



Final Round, 17-20. place

## Match Team Statistics

Match No. 92

## Brazil 32 - 33 Croatia

(13 - 13) (13 - 13) (SO: 6 - 7)

2.7.2026. 18:30

Attendance: 500

Zhongdu Campus

Gymnasium

Referees: Makrem Ben Dahou (TUN) / Rochdi Zoghلامي (TUN)

### Shot distribution by player

2 N. Ercegović


3 U. Ivančić


5 A. Čičak

1/1		
1/3		
0/1	1/1	4/4

7 L. Renić

1/1		
0/1		0/1
	1/1	0/1

11 M. Brusić

0/1		1/1
		4/4

1 post 1 miss. 1 block

18 J. Zubac

		1/1
1/1		1/1

20 T. Čović

1/1		

1 post

21 T. Đelekovičan

		1/1
		0/1
3/3		1/1

23 G. Rogošić


25 D. Dananić

1/1		

1 post

26 L. Janković

	0/1	

31 L. Marinić

		1/1

33 V. Josipović


34 J. Miklić

		1/1
3/3		
3/3		1/1

### TOTAL

2/2		2/2
4/8	0/1	2/4
9/10	2/2	12/13

3 post 1 miss. 1 block

### Saves distribution goalkeepers

1 L. Pudić

1/2		0/2
0/1		1/3
0/5	3/5	3/8

12 N. Kraljević

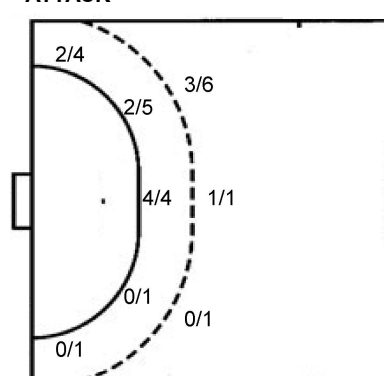
1/2	1/1	0/1
0/2		1/1
1/3	2/4	0/4

### TOTAL

2/4	1/1	0/3
0/3		2/4
1/8	5/9	3/12

### Shots by position

#### ATTACK



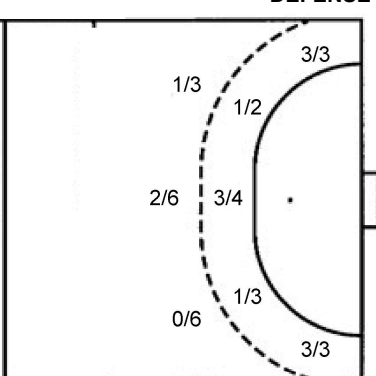
7m penalties 14/15

Fastbreak 2/2

Breakthrough 5/7

Long dist. 0/0

#### DEFENSE



7m penalties 9/12

Fastbreak 3/3

Breakthrough 5/7

Long dist. 1/1

### Shooting statistics

Position	Goals	Sav.	Miss.	Post	Blk.	Total	%
Back (9m)	4	2	1	0	1	8	50
Line (6m)	6	4	0	0	0	10	60
Wing	2	1	0	2	0	5	40
7m penalties	14	0	0	1	0	15	93
Fastbreak	2	0	0	0	0	2	100
Breakthrough	5	2	0	0	0	7	71
<b>Total</b>	<b>33</b>	<b>9</b>	<b>1</b>	<b>3</b>	<b>1</b>	<b>47</b>	<b>70</b>

# Jersey number Tot. Total shooting 6m 6m (line) shooting 9m 9m shooting Wng Wing shooting FB Fastbreak sh. 7m 7m penalty sh.  
 Brk. Breakthrough sh. LD Long distance sh. As. Assists PC Pass clear chance E7 Earned 7m pen. TF Technical faults St. Steals  
 2m 2m punishments C7. Committed 7m E2 Earned 2m pun. YC. Yellow cards R/B Red/Blue cards Blk. Blocks S Starting Line-up

Handball statistics and livescore by Toma-soft ltd (www.toma-soft.hr)

