



25th IHF Women's Junior World Championship 2026



Final Round, 17-20. place

Match Team Statistics

Match No. 91

Egypt 33 - 26 Iceland

(17 - 12) (16 - 14)

2.7.2026. 16:15

Attendance: 180

Zhongdu Campus

Gymnasium

Referees: Ismailj Metalari (MKD) / Nenad Nikolovski (MKD)

Shot distribution by player

2 R. Khaled Hussien Ahmed

1/1		1/1

1 post

4 J. Yasser Hussien

5 B. Ahmed Abdelmoezz

0/1		
2/2		

9 S. Elsheref

1/1		
2/2	2/2	2/2

1 miss. 1 block

10 M. Ashraf Abdelnaser

		0/1
		2/2

1 post

21 S. Essam Abouelazaiem

		1/1
1/1		

1 post

23 J. Mahmoud Eisa

	1/1	

30 R. Ahmed

		1/1
0/2		

1 miss.

39 J. Tamer Abdallah

68 N. Tamer Ataweya

		1/1

70 R. Mohamed Abdelsalam

	1/1	2/2
0/1		
	2/2	

1 miss. 1/1 lob

80 A. Said Fayed

1/1		
		4/4

88 S. Mahmoud Deabes

99 J. Waled Ghonim

		1/1
3/3		

2 miss.

TOTAL

2/3	1/1	4/4
1/2		2/3
8/10	5/5	9/9

3 post 5 miss. 1 block 1/1 lob

Saves distribution goalkeepers

1 J. Salama

	1/1	1/2
0/4	1/1	0/3

98 G. Sayed

4/5		1/1
3/8	1/2	5/6
0/2	2/4	3/6

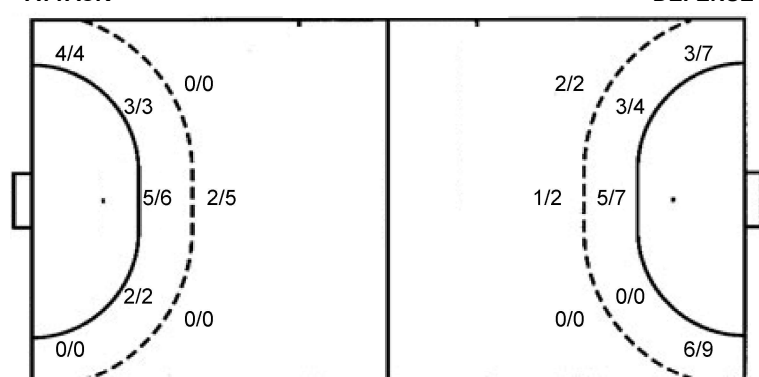
TOTAL

4/5	1/1	2/3
3/8	1/2	5/6
0/6	3/5	3/9

Shots by position

ATTACK

DEFENSE



7m penalties 1/3
Fastbreak 0/1
Breakthrough 15/21
Long dist. 1/2

7m penalties 0/5
Fastbreak 0/3
Breakthrough 4/12
Long dist. 2/2

Shooting statistics

Position	Goals	Sav.	Miss.	Post	Blk.	Total	%
Back (9m)	2	1	0	1	1	5	40
Line (6m)	10	1	0	0	0	11	91
Wing	4	0	0	0	0	4	100
7m penalties	1	2	0	0	0	3	33
Fastbreak	0	0	1	0	0	1	0
Breakthrough	15	1	3	2	0	21	71
Total	32	5	4	3	1	45	71

Jersey number Tot. Total shooting 6m 6m (line) shooting 9m 9m shooting Wng Wing shooting FB Fastbreak sh. 7m 7m penalty sh.
Brk. Breakthrough sh. LD Long distance sh. As. Assists PC Pass clear chance E7 Earned 7m pen. TF Technical faults St. Steals
2m 2m punishments C7. Committed 7m E2 Earned 2m pun. YC. Yellow cards R/B Red/Blue cards Blk. Blocks S Starting Line-up

Handball statistics and livescore by Toma-soft ltd (www.toma-soft.hr)



25th IHF Women's Junior World Championship 2026



Final Round, 17-20. place

Match Team Statistics
Match No. 91

Egypt 33 - 26 Iceland
(17 - 12) (16 - 14)

2.7.2026. 16:15
Attendance: 180
Zhongdu Campus
Gymnasium

Referees: Ismailj Metalari (MKD) / Nenad Nikolovski (MKD)

Iceland

Players		Goals / shots										Attack					Def.			Penalties				TP	
#	Surname and name	S	Tot.	%	9m	6m	Wing	7m	FB	Brk.	LD	As.	PC	E7	E2	TF	St.	C7	Blk	YC	2m	R	B		
4	THÓRHALLSDÓTTIR Ásthildur Jóna	S	5/12	42		2/2	3/6		0/3	0/1							1		1						45:06
9	EIRIKSDÓTTIR Arna Karítas		4/8	50	2/2	1/1		0/3		1/2			2	3		1	3	1							26:20
10	GUDMUNDSDÓTTIR Berggrós Ásta		3/3	100		1/1				2/2			6	2	1		1		1						10:28
11	ADALSTEINSDÓTTIR Emelía Ósk	S	1/1	100		1/1							1	1	1	1	1		1		1				31:45
12	HALLGRÍMSDÓTTIR Sif																								33:59
13	GUDJÓNSDÓTTIR Guðmunda Audur	S	2/4	50		1/3					1/1				1				1						41:30
14	VIKTORSÓTTIR Alexandra Ósk	S	5/8	63			5/8						1												46:18
16	ELÍASARDÓTTIR Elísabet Millý	S																							21:38
17	TRAUŠTADÓTTIR Guðrún Hekla	S	1/4	25	1/1			0/2		0/1			2	3			3								38:18
19	UNNARSÓTTIR Birna María		1/4	25		0/1	0/1			1/2			2	1	2										30:21
21	HJARDAR Ásdís Halla		2/2	100		2/2															1				19:27
22	GÍSLADÓTTIR Sara Rún																								11:32
23	FRÓDADÓTTIR Sara Lind		1/1	100			1/1																		8:10
24	HAUKSDÓTTIR Inga Fanney																								2:52
26	PÁLSDÓTTIR Dagmar Guðrun	S	0/3	0						0/3			1	2			3	2							29:43
35	BRAGADÓTTIR Hulda Hrönn		1/3	33	0/1					0/1	1/1		3	1											22:33
Team / bench																									
TOTAL			26/53	49	3/4	8/11	9/16	0/5	0/3	4/12	2/2	17	13	5	2	12	4	3	1	1	2	0	0		

Goalkeepers		Saves / shots									
#	Surname and name	Tot.	%	9m	6m	Wing	7m	FB	Brk.	LD	
12	HALLGRÍMSDÓTTIR Sif	1/22	5	1/2	0/7	0/3	0/1		0/9		
16	ELÍASARDÓTTIR Elísabet Millý	4/15	27	0/1	1/4	0/1	2/2		1/7		
TOTAL		5/37	14	1/3	1/11	0/4	2/3	3/0	1/16	0/0	

Coach: Halldór Stefán Haraldsson

Number of attacks: 61, Efficiency: 43%, Average Duration: 23.84 seconds

Attack by type of defense

	Shots	9m	6m	Wing	TF	E7	E2
On def. 6-0	24/43	3/4	8/11	9/16	12	5	2
Fastbreak	0/3				0	0	0

Defense by type

	Total	9m	6m	Wing	Stl.	C7	2m
Def. 6-0	31/41	2/5	10/11	4/4	4	3	0
Fastbreak	0/1				0	0	2

Attack with superiority / minority / goalkeeper out

	Attack				Reaction		
	Att.	Eff.	Shots	TF	FB	LD	Tot.
7 on 6 (GK out)	4	50%	2/2	2	0/0	1/2	1/2
6 on 6 (GK out)	3	67%	2/3	0	0/0	0/0	0/0
6 on 6	48	44%	21/39	9			
7 on 5 (GK out)	1	100%	1/1	0	0/0	0/0	0/0
6 on 5	5	0%	0/4	1			

Player superiority / GK out counted at the end of attack (in case it changes during attack)

Defense with superiority / minority / goalkeeper out

	Attack				Reaction		
	Att.	Eff.	Shots	TF	FB	LD	Tot.
7 on 6 (GK out)	10	40%	4/8	2	0/0	1/1	1/1
6 on 6 (GK out)	4	50%	2/3	1	0/0	1/1	1/1
6 on 5 (GK out)	1	100%	1/1	0	0/0	0/0	0/0
6 on 6	43	58%	25/32	11			
6 on 5	2	50%	1/1	1			

Numbers show attacking numbers of opponent. Lower efficiency of opponent means better defense of this team

Jersey number Tot. Total shooting 6m 6m (line) shooting 9m 9m shooting Wng Wing shooting FB Fastbreak sh. 7m 7m penalty sh.
Brk. Breakthrough sh. LD Long distance sh. As. Assists PC Pass clear chance E7 Earned 7m pen. TF Technical faults St. Steals
2m 2m punishments C7 Committed 7m E2 Earned 2m pun. YC. Yellow cards R/B Red/Blue cards Blk. Blocks S Starting Line-up

Handball statistics and livescore by Toma-soft ltd (www.toma-soft.hr)



25th IHF Women's Junior World Championship 2026



Final Round, 17-20. place

Match Team Statistics

Match No. 91

Egypt 33 - 26 Iceland

(17 - 12) (16 - 14)

2.7.2026. 16:15

Attendance: 180

Zhongdu Campus

Gymnasium

Referees: Ismailj Metalari (MKD) / Nenad Nikolovski (MKD)

Shot distribution by player

4 Á. Thórhallsdóttir

	0/1	0/1
2/3	0/1	0/1
		3/4

1 post

9 A. Eiríksdóttir

1/1		
1/1		1/3

2 post 1/1 lob

10 B. Gudmundsdóttir

3/3		

11 E. Adalsteinsdóttir

1/1		

1/1 lob

13 G. Gudjónsdóttir

0/2		
	1/1	
1/1		

14 A. Víktorsdóttir

1/2		0/1
	2/3	2/2

17 G. Traustadóttir

0/1		
1/2		0/1

19 B. Unnarsdóttir

		0/1
		1/2
0/1		

21 Á. Hjardar

		1/1
1/1		

22 S. Gísladóttir

23 S. Fródadóttir

1/1 lob

24 I. Hauksdóttir

26 D. Pálsdóttir

0/1		
		0/1

1 miss.

35 H. Bragadóttir

	1/2	

1 block

TOTAL

1/5	0/1	1/3
5/8	1/2	1/6
6/6	3/6	6/9

3 post 1 miss. 1 block 2/2 lob

Saves distribution goalkeepers

12 S. Hallgrímsson

0/1	0/1	0/4
		0/2
1/5	0/3	0/6

16 E. Elíasardóttir

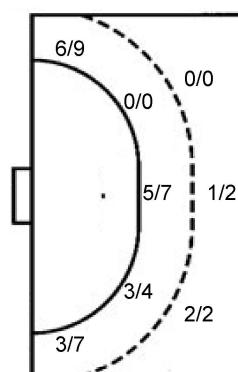
1/2		
1/2		1/1
1/5	0/1	0/3

TOTAL

1/3	0/1	0/4
1/2		1/3
2/10	0/4	0/9

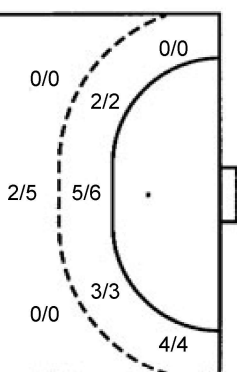
Shots by position

ATTACK



7m penalties 0/5
Fastbreak 0/3
Breakthrough 4/12
Long dist. 2/2

DEFENSE



7m penalties 1/3
Fastbreak 0/1
Breakthrough 15/21
Long dist. 1/2

Shooting statistics

Position	Goals	Sav.	Miss.	Post	Blk.	Total	%
Back (9m)	3	0	0	0	1	4	75
Line (6m)	8	3	0	0	0	11	73
Wing	9	6	0	1	0	16	56
7m penalties	0	3	0	2	0	5	0
Fastbreak	0	3	0	0	0	3	0
Breakthrough	4	7	1	0	0	12	33
Total	24	22	1	3	1	51	47

Jersey number Tot. Total shooting 6m 6m (line) shooting 9m 9m shooting Wng Wing shooting FB Fastbreak sh. 7m 7m penalty sh.
Brk. Breakthrough sh. LD Long distance sh. As. Assists PC Pass clear chance E7 Earned 7m pen. TF Technical faults St. Steals
2m 2m punishments C7. Committed 7m E2 Earned 2m pun. YC. Yellow cards R/B Red/Blue cards Blk. Blocks S Starting Line-up

Handball statistics and livescore by Toma-soft ltd (www.toma-soft.hr)

