



25th IHF Women's Junior World Championship 2026



Final Round, Quarterfinals

Match Team Statistics
Match No. 87

Denmark 38 - 26 Serbia
(18 - 9) (20 - 17)

2.7.2026. 16:00
Attendance: 700
Jinzhong College Gymnasium

Referees: Bruna Correa (BRA) / Renata Correa (BRA)

Denmark

#	Surname and name	S	Goals / shots								Attack				Def.			Penalties				TP		
			Tot.	%	9m	6m	Wing	7m	FB	Brk.	LD	As.	PC	E7	E2	TF	St.	C7	Blk	YC	2m		R	B
2	ANTIVAKIS Cecillie Wiking	S	3/5	60			3/4			0/1														56:01
3	ANDERSEN Johanne Lasthein		1/1	100			1/1																	19:23
5	ULRICHSEN Tilde Nygaard		0/1	0						0/1					2	1					1	2		13:08
6	SIBANDA Emilia Arroe	S	1/1	100		1/1											1							43:22
7	HOPPE Kirstine Emilie	S	9/12	75	0/2			3/3		6/7				5	3		1	1	2	1				38:32
10	JENSEN Isabella		2/4	50	0/1	1/1				1/2				4	1		1	1						25:34
12	KOERTH Maria Liv Dahl																							
14	LÜTZHOFT Lina Thorstein	S	4/5	80		3/4				1/1						1			2					37:26
15	PERSSON Julie Groth	S	4/7	57	4/7									2	1	1					2			38:04
16	NIELSEN Freja Fonseca	S												2										49:10
17	MARTENS Laura Duevang		2/3	67		1/2				1/1												1		16:10
18	RASMUSSEN Emma Hoirup																							
20	SOLLING FAGER Freja																							7:33
22	JOHANSEN Julie Boendorf	S	8/10	80			5/7			3/3													1	44:40
24	NORSKOV Cecilie Frydendahl		1/3	33	0/1					0/1	1/1													20:32
29	BODKER Emilie Lolk		3/3	100	1/1									1										9:49
Team / bench																								
TOTAL			38/55	69	5/12	6/8	9/12	3/3	4/5	10/14	1/1	18	6	3	2	11	6	6	1	0	2	0	0	

#	Surname and name	Saves / shots								
		Tot.	%	9m	6m	Wing	7m	FB	Brk.	LD
12	KOERTH Maria Liv Dahl									
16	NIELSEN Freja Fonseca	14/34	41	2/5	4/7	1/5	3/4	0/2	4/11	
20	SOLLING FAGER Freja	2/8	25			0/2	0/2		2/4	
TOTAL		16/42	38	2/5	4/7	1/7	3/6	0/2	6/15	0/0

Coach: Ole Lund Bitsch

Number of attacks: 64, Efficiency: 59%, Average Duration: 25.69 seconds

Attack by type of defense

	Shots	9m	6m	Wing	TF	E7	E2
On def. 6-0	30/46	5/12	6/8	9/12	11	3	2
Fastbreak	4/5				0	0	0

Defense by type

	Total	9m	6m	Wing	Stl.	C7	2m
Def. 6-0	21/39	3/6	3/8	6/7	6	6	0
Fastbreak	2/2				0	0	2

Attack with superiority / minority / goalkeeper out

	Attack				Reaction		
	Att.	Eff.	Shots	TF	FB	LD	Tot.
7 on 6 (GK out)	8	63%	5/6	2	0/0	0/0	0/0
7 on 5 (GK out)	2	100%	2/2	0	0/0	0/0	0/0
6 on 6 (GK out)	3	33%	1/3	0	0/0	0/0	0/0
6 on 6	48	58%	28/39	9			
6 on 5	3	67%	2/3	0			

Player superiority / GK out counted at the end of attack (in case it changes during attack)

Defense with superiority / minority / goalkeeper out

	Attack				Reaction		
	Att.	Eff.	Shots	TF	FB	LD	Tot.
7 on 6 (GK out)	2	100%	2/2	0	0/0	0/0	0/0
6 on 6 (GK out)	3	0%	0/1	2	1/1	1/1	2/2
6 on 6	55	38%	21/39	16			
6 on 5	4	75%	3/3	1			

Numbers show attacking numbers of opponent. Lower efficiency of opponent means better defense of this team

Jersey number Tot. Total shooting 6m 6m (line) shooting 9m 9m shooting Wng Wing shooting FB Fastbreak sh. 7m 7m penalty sh.
Brk. Breakthrough sh. LD Long distance sh. As. Assists PC Pass clear chance E7 Earned 7m pen. TF Technical faults St. Steals
2m 2m punishments C7 Committed 7m E2 Earned 2m pun. YC. Yellow cards R/B Red/Blue cards Blk. Blocks S Starting Line-up



25th IHF Women's Junior World Championship 2026



Final Round, Quarterfinals

Match Team Statistics

Match No. 87

Denmark 38 - 26 Serbia

(18 - 9) (20 - 17)

2.7.2026. 16:00

Attendance: 700

Jinzhong College Gymnasium

Referees: Bruna Correa (BRA) / Renata Correa (BRA)

Shot distribution by player

2 C. Antivakis

1/2		1/1

1 post 1/1 lob

3 J. Andersen

		1/1

5 T. Ulrichsen

1 miss.

6 E. Sibanda

		1/1

7 K. Hoppe

1/1	0/1	2/2
3/4		3/3

1 block

10 I. Jensen

		1/1
		1/1

1 post 1 miss.

14 L. Lützhoff

		1/1
		2/2

1 miss. 1/1 lob

15 J. Persson

		1/1
1/2		1/1
1/2		

1 post

17 L. Martens

1/1		1/1

1 miss.

18 E. Rasmussen

22 J. Johansen

	1/1	1/1
		1/1
2/3		2/2

1 post 1/1 lob

24 C. Norskov

1/1		

2 miss.

29 E. Bodker

1/1		1/1
1/1		

TOTAL

3/3	1/2	7/7
1/2		3/3
9/13		11/11

4 post 6 miss. 1 block 3/3 lob

Saves distribution goalkeepers

12 M. Koerth

16 F. Nielsen

1/6	1/2	1/5
1/1		3/4
3/5	1/1	3/9

20 F. Solling Fager

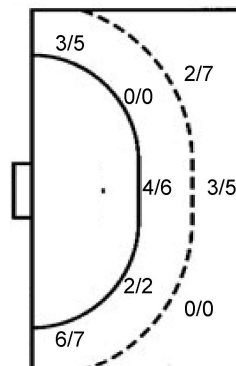
		1/2
		1/1
0/3		0/2

TOTAL

1/6	1/2	2/7
1/1		4/5
3/8	1/1	3/11

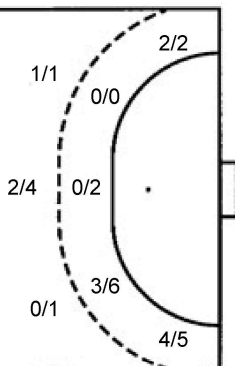
Shots by position

ATTACK



7m penalties 3/3
Fastbreak 4/5
Breakthrough 10/14
Long dist. 1/1

DEFENSE



7m penalties 3/6
Fastbreak 2/2
Breakthrough 9/18
Long dist. 0/0

Shooting statistics

Position	Goals	Sav.	Miss.	Post	Blk.	Total	%
Back (9m)	5	3	2	1	1	12	42
Line (6m)	6	0	2	0	0	8	75
Wing	9	2	0	1	0	12	75
7m penalties	3	0	0	0	0	3	100
Fastbreak	4	0	0	1	0	5	80
Breakthrough	10	1	2	1	0	14	71
Total	37	6	6	4	1	54	69

Jersey number Tot. Total shooting 6m 6m (line) shooting 9m 9m shooting Wng Wing shooting FB Fastbreak sh. 7m 7m penalty sh.
Brk. Breakthrough sh. LD Long distance sh. As. Assists PC Pass clear chance E7 Earned 7m pen. TF Technical faults St. Steals
2m 2m punishments C7. Committed 7m E2 Earned 2m pun. YC. Yellow cards R/B Red/Blue cards Blk. Blocks S Starting Line-up

Handball statistics and livescore by Toma-soft ltd (www.toma-soft.hr)



25th IHF Women's Junior World Championship 2026



Final Round, Quarterfinals

Match Team Statistics

Denmark 38 - 26 Serbia

2.7.2026. 16:00

Match No. 87

(18 - 9) (20 - 17)

Attendance: 700

Jinzhong College Gymnasium

Referees: Bruna Correa (BRA) / Renata Correa (BRA)

Serbia

Players		Goals / shots									Attack					Def.			Penalties			TP			
#	Surname and name	S	Tot.	%	9m	6m	Wing	7m	FB	Brk.	LD	As.	PC	E7	E2	TF	St.	C7	Blk	YC	2m	R	B		
8	MARINOVIĆ Tara																								12:47
9	ŽAKULA Sara																								11:10
10	PETKOVIĆ Ema		1/2	50		0/1				1/1						1								1	27:15
11	NEDELJKOVIĆ Mia	S	4/5	80			2/3	1/1	1/1																31:17
12	GRUJIČIĆ Ivona	S																							31:24
13	JANKOVIĆ Lena	S	1/1	100						1/1		1				2	1	1	1						33:45
15	RADOVIĆ Sara	S	5/12	42	1/1	2/3				2/8		3	2	4	1	6	1	1							41:21
18	JANKOVIĆ Tijana	S	0/3	0		0/3																			10:10
19	MILOSAVLJEVIĆ Leana		6/7	86	1/2	1/1		1/1		3/3						3	1								38:16
22	OTAŠEVIĆ Milica	S	1/4	25				0/1		1/3		5	1	1		2		1							41:07
23	DUŠIĆ Tamara		3/5	60	1/3			1/1		1/1			1			2							1		25:45
26	TANOVIĆ Jana																								5:28
44	ĐEKIĆ Mia		0/1	0				0/1						1											25:56
60	BULATOVIĆ Nikolina	S	2/4	50			2/2	0/1		0/1						2									33:11
73	RANKOVIĆ Zorica		3/3	100			2/2		1/1						1										28:29
91	ČINKU Tatjana															1									21:01
	Team / bench																								
	TOTAL		26/47	55	3/6	3/8	6/7	3/6	2/2	9/18	0/0	9	4	6	2	19	3	3	1	0	2	0	0	0	

Goalkeepers		Saves / shots								
#	Surname and name	Tot.	%	9m	6m	Wing	7m	FB	Brk.	LD
12	GRUJIČIĆ Ivona	3/28	11	1/5	0/3	1/6	0/2	0/4	1/8	
26	TANOVIĆ Jana	0/3	0		0/1	0/1			0/1	
91	ČINKU Tatjana	3/12	25	2/3	0/2	1/4	0/1		0/2	
	TOTAL	6/43	14	3/8	0/6	2/11	0/3	0/4	1/11	0/0

Coach: Zoran Barbulović

Number of attacks: 64, Efficiency: 41%, Average Duration: 30.47 seconds

Attack by type of defense

	Shots	9m	6m	Wing	TF	E7	E2
On def. 6-0	21/39	3/6	3/8	6/7	19	6	2
Fastbreak	2/2				0	0	0

Defense by type

	Total	9m	6m	Wing	Stl.	C7	2m
Def. 6-0	30/46	5/12	6/8	9/12	3	3	0
Fastbreak	4/5				0	0	2

Attack with superiority / minority / goalkeeper out

	Attack				Reaction		
	Att.	Eff.	Shots	TF	FB	LD	Tot.
7 on 6 (GK out)	2	100%	2/2	0	0/0	0/0	0/0
6 on 6 (GK out)	3	0%	0/1	2	1/1	1/1	2/2
6 on 6	55	38%	21/39	16			
6 on 5	4	75%	3/3	1			

Player superiority / GK out counted at the end of attack (in case it changes during attack)

Defense with superiority / minority / goalkeeper out

	Attack				Reaction		
	Att.	Eff.	Shots	TF	FB	LD	Tot.
7 on 6 (GK out)	8	63%	5/6	2	0/0	0/0	0/0
7 on 5 (GK out)	2	100%	2/2	0	0/0	0/0	0/0
6 on 6 (GK out)	3	33%	1/3	0	0/0	0/0	0/0
6 on 6	48	58%	28/39	9			
6 on 5	3	67%	2/3	0			

Numbers show attacking numbers of opponent. Lower efficiency of opponent means better defense of this team

Jersey number Tot. Total shooting 6m 6m (line) shooting 9m 9m shooting Wng Wing shooting FB Fastbreak sh. 7m 7m penalty sh.
 Brk. Breakthrough sh. LD Long distance sh. As. Assists PC Pass clear chance E7 Earned 7m pen. TF Technical faults St. Steals
 2m 2m punishments C7. Committed 7m E2 Earned 2m pun. YC. Yellow cards R/B Red/Blue cards Blk. Blocks S Starting Line-up

Handball statistics and livescore by Toma-soft ltd (www.toma-soft.hr)



25th IHF Women's Junior World Championship 2026



Final Round, Quarterfinals

Match Team Statistics

Match No. 87

Denmark 38 - 26 Serbia

(18 - 9) (20 - 17)

2.7.2026. 16:00

Attendance: 700

Jinzhong College Gymnasium

Referees: Bruna Correa (BRA) / Renata Correa (BRA)

Shot distribution by player

8 T. Marinović

9 S. Žakula

10 E. Petković

		1/2

11 M. Nedeljković

0/1		4/4

13 L. Janković

	1/1	

15 S. Radović

1/1	0/1	0/1
		0/2
1/1		3/4

2 post

18 T. Janković

0/1		
		0/1

1 post

19 L. Milosavljević

1/1		1/1
		1/1
1/1	0/1	2/2

22 M. Otašević

		0/2
		1/1

1 post

23 T. Dušić

1/1		
1/2		1/1

1 block

44 M. Đekić

0/1		

60 N. Bulatović

1/1		0/1
0/1		

1/1 lob

73 Z. Ranković

1/1		
2/2		

TOTAL

5/6	1/2	5/7
0/1		1/5
5/8	0/1	8/11

4 post 1 block 1/1 lob

Saves distribution goalkeepers

12 I. Grujičić

0/3		0/6
0/1		
3/9		0/6

26 J. Tanović

		0/1
0/1		0/1

91 T. Činku

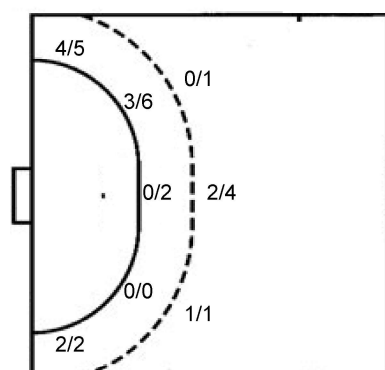
	1/2	
1/1		0/3
1/2		0/4

TOTAL

0/3	1/2	0/7
1/2		0/3
4/12		0/11

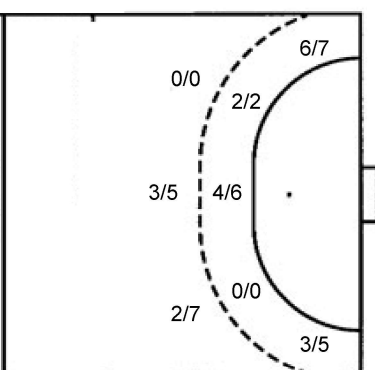
Shots by position

ATTACK



7m penalties 3/6
Fastbreak 2/2
Breakthrough 9/18
Long dist. 0/0

DEFENSE



7m penalties 3/3
Fastbreak 4/5
Breakthrough 10/14
Long dist. 1/1

Shooting statistics

Position	Goals	Sav.	Miss.	Post	Blk.	Total	%
Back (9m)	3	2	0	0	1	6	50
Line (6m)	3	4	0	1	0	8	38
Wing	6	1	0	0	0	7	86
7m penalties	3	3	0	0	0	6	50
Fastbreak	2	0	0	0	0	2	100
Breakthrough	9	6	0	3	0	18	50
Total	26	16	0	4	1	47	55

Jersey number Tot. Total shooting 6m 6m (line) shooting 9m 9m shooting Wng Wing shooting FB Fastbreak sh. 7m 7m penalty sh.
Brk. Breakthrough sh. LD Long distance sh. As. Assists PC Pass clear chance E7 Earned 7m pen. TF Technical faults St. Steals
2m 2m punishments C7. Committed 7m E2 Earned 2m pun. YC. Yellow cards R/B Red/Blue cards Blk. Blocks S Starting Line-up

Handball statistics and livescore by Toma-soft ltd (www.toma-soft.hr)

