



25th IHF Women's Junior World Championship 2026



Final Round, 13-16. place

Match Team Statistics

Match No. 85

Austria 22 - 25 P.R. of China

(15 - 13) (7 - 9) (SO: 0 - 3)

2.7.2026. 13:45

Attendance: 3800

Jinzhong City Gymnasium

Referees: Stefan Berdic (SRB) / Filip Sorak (SRB)

Austria

#	Surname and name	S	Goals / shots								Attack					Def.			Penalties				TP					
			Tot.	%	9m	6m	Wing	7m	FB	Brk.	LD	As.	PC	E7	E2	TF	St.	C7	Blk	YC	2m	R		B				
1	DORFINGER Elena																											15:36
2	PROVIN Naomi		0/1	0	0/1																							1:35
5	TRUTSCHNIG Elisabeth		1/1	100																								28:40
8	NEUNTEUFEL Leonie	S	4/7	57			2/4	0/1	1/1	1/1																		42:33
11	SIEBER Chiara		0/3	0	0/2	0/1																						44:49
12	PLAVOTIC Nina	S																										40:03
13	SCHIEBER Leana	S																										6:11
14	CHROUST Rebecca	S	3/6	50	1/1	0/1		0/1		2/3																		28:23
17	RAPPITSCH Rebecca		2/2	100		1/1				1/1																		41:24
19	PREISS Anja		1/1	100		1/1																						14:21
21	MATICEVIC Martina	S	4/12	33	1/4		0/1	1/2		2/5																		43:21
22	THUN Mathilde	S	3/6	50		1/1	0/1			2/4																		42:53
26	LOVRINOVIC Christina		0/1	0					0/1																			21:08
28	KLINGHOFER Sophie	S	1/1	100		1/1																						6:52
34	HANDLER Rosa		0/1	0		0/1																						13:59
44	SCHWEIGER Melina		3/5	60	1/1	1/1				1/3																		28:12
Team / bench																												
TOTAL			22/47	47	3/7	5/9	2/7	1/4	1/2	10/18	0/0																	

#	Surname and name	Saves / shots								
		Tot.	%	9m	6m	Wing	7m	FB	Brk.	LD
1	DORFINGER Elena	6/14	43	4/4		2/4	0/5		0/1	
12	PLAVOTIC Nina	9/26	35	1/1	1/6	2/5	1/4	0/1	4/9	
TOTAL		15/40	38	5/5	1/6	4/9	1/9	0/1	4/10	0/0

Coach: Miro Barisic

Number of attacks: 57, Efficiency: 39%, Average Duration: 33.80 seconds

Attack by type of defense

	Shots	9m	6m	Wing	TF	E7	E2
On def. 6-0	12/27	2/6	4/5	1/4	9	1	3
On def. 5-1	8/12	1/1	1/2	1/3	5	0	1
Fastbreak	1/2				0	0	0

Defense by type

	Total	9m	6m	Wing	Stl.	C7	2m
Def. 6-0	16/32	0/5	5/6	5/11	2	7	0
Fastbreak	1/2				0	0	5

Attack with superiority / minority / goalkeeper out

	Attack				Reaction		
	Att.	Eff.	Shots	TF	FB	LD	Tot.
7 on 6 (GK out)	2	0%	0/2	0	0/0	0/0	0/0
7 on 5 (GK out)	2	50%	1/1	1	0/0	0/0	0/0
6 on 6 (GK out)	6	50%	3/4	2	0/0	0/0	0/0
6 on 5 (GK out)	1	100%	1/1	0	0/0	0/0	0/0
6 on 6	41	39%	16/32	9			
6 on 5	5	20%	1/3	2			

Player superiority / GK out counted at the end of attack (in case it changes during attack)

Defense with superiority / minority / goalkeeper out

	Attack				Reaction		
	Att.	Eff.	Shots	TF	FB	LD	Tot.
7 on 6 (GK out)	3	67%	2/2	1	0/0	0/0	0/0
6 on 6 (GK out)	3	67%	2/3	0	0/0	0/0	0/0
6 on 6	40	35%	14/29	11			
6 on 5 (GK out)	2	100%	2/2	0	0/0	0/0	0/0
6 on 5	9	56%	5/6	3			

Numbers show attacking numbers of opponent. Lower efficiency of opponent means better defense of this team

Jersey number Tot. Total shooting 6m 6m (line) shooting 9m 9m shooting Wng Wing shooting FB Fastbreak sh. 7m 7m penalty sh.
 Brk. Breakthrough sh. LD Long distance sh. As. Assists PC Pass clear chance E7 Earned 7m pen. TF Technical faults St. Steals
 2m 2m punishments C7. Committed 7m E2 Earned 2m pun. YC. Yellow cards R/B Red/Blue cards Blk. Blocks S Starting Line-up



25th IHF Women's Junior World Championship 2026



Final Round, 13-16. place

Match Team Statistics

Match No. 85

Austria 22 - 25 P.R. of China

(15 - 13) (7 - 9) (SO: 0 - 3)

2.7.2026. 13:45

Attendance: 3800

Jinzhong City Gymnasium

Referees: Stefan Berdic (SRB) / Filip Sorak (SRB)

Shot distribution by player

2 N. Provin 1 block	5 E. Trutschnig 1/1	8 L. Neunteufel 1 post 1/1 0/2 2/2	11 C. Sieber 0/1 0/1 0/1	13 L. Schieber	14 R. Chroust 2 miss. 1/1 0/1 2/2	17 R. Rappitsch 1/1 lob
19 A. Preiss 1/1	21 M. Maticcevic 1 miss. 1 block 1/1 0/1 0/1 0/1 2/2 1/2 0/2	22 M. Thun 1/1 1/3 1/2	26 C. Lovrinovic 0/1	28 S. Klinghofer 1/1	34 R. Handler 0/1	44 M. Schweiger 1/1 2/4

TOTAL

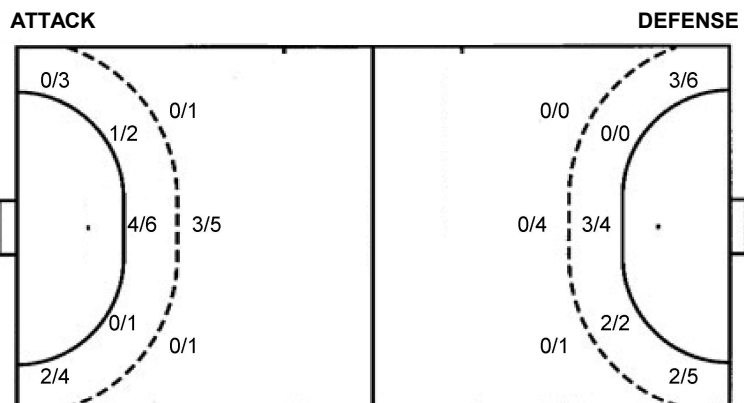
2/2	2/3	1/2
1/3	0/1	3/4
7/9	1/5	4/11

1 post 3 miss. 2 block 1/1 lob

Saves distribution goalkeepers

1 E. Dorfinger 0/1 1/1 1/2 1/3 1/1 0/2 0/1 1/1 1/1	12 N. Plavotic 1/3 0/1 0/1 2/3 0/5 2/4 1/2 3/6	TOTAL 1/4 1/2 1/2 1/4 3/4 0/7 2/5 2/3 4/7
--------------------------------------------------------------------	----------------------------------------------------------------	-----------------------------------------------------------

Shots by position



7m penalties 1/4
Fastbreak 1/2
Breakthrough 10/18
Long dist. 0/0

7m penalties 8/10
Fastbreak 1/2
Breakthrough 6/10
Long dist. 0/0

Shooting statistics

Position	Goals	Sav.	Miss.	Post	Blk.	Total	%
Back (9m)	3	1	1	0	2	7	43
Line (6m)	5	3	1	0	0	9	56
Wing	2	4	0	1	0	7	29
7m penalties	1	3	0	0	0	4	25
Fastbreak	1	1	0	0	0	2	50
Breakthrough	10	7	1	0	0	18	56
Total	22	19	3	1	2	47	47

Jersey number Tot. Total shooting 6m 6m (line) shooting 9m 9m shooting Wng Wing shooting FB Fastbreak sh. 7m 7m penalty sh.
Brk. Breakthrough sh. LD Long distance sh. As. Assists PC Pass clear chance E7 Earned 7m pen. TF Technical faults St. Steals
2m 2m punishments C7. Committed 7m E2 Earned 2m pun. YC. Yellow cards R/B Red/Blue cards Blk. Blocks S Starting Line-up



25th IHF Women's Junior World Championship 2026



Final Round, 13-16. place

Match Team Statistics

Match No. 85

Austria 22 - 25 P.R. of China

(15 - 13) (7 - 9) (SO: 0 - 3)

2.7.2026. 13:45

Attendance: 3800

Jinzhong City Gymnasium

Referees: Stefan Berdic (SRB) / Filip Sorak (SRB)

P.R. of China

Players		Goals / shots									Attack					Def.			Penalties			TP		
#	Surname and name	S	Tot.	%	9m	6m	Wing	7m	FB	Brk.	LD	As.	PC	E7	E2	TF	St.	C7	Blk	YC	2m		R	B
1	SUN Yihan																							
3	PAN Fengying	S	0/5	0	0/3			0/1		0/1		1		1	1	3			1		1			48:51
5	ZHANG Jingwen																							
6	FU Yujie	S	1/5	20		1/1	0/3		0/1					1	1									26:54
8	LIANG Jing	S	2/5	40	0/1	0/1		1/1		1/2		2	4	1		3	1					1		39:50
9	ZHANG Shuoyan	S	9/11	82	0/1			4/4		5/6		2	2	1	1	3		1				1		45:14
10	HU Jiaxin		1/1	100				1/1				1												4:01
15	YANG Yue	S	3/3	100		3/3							1	2	2	4			1			1		58:55
16	HUANG Sitong	S																						56:18
21	XING Ziyao		1/1	100				1/1																
23	ZHENG Yun		0/1	0						0/1		1					1	1						35:51
26	LIU Yutong																							3:27
37	CHEN Xinyu											1		1										11:12
39	SHA Yiyao	S	4/7	57			3/6		1/1															58:39
55	LIU Yixuan																							
56	CHENG Yahan		4/5	80		1/1	2/2	1/2				1				1	2							30:48
	Team / bench																				1			
	TOTAL		25/44	57	0/5	5/6	5/11	8/10	1/2	6/10	0/0	9	7	7	5	15	4	1	2	1	3	1	0	

Goalkeepers		Saves / shots								
#	Surname and name	Tot.	%	9m	6m	Wing	7m	FB	Brk.	LD
1	SUN Yihan	3/3	100				3/3			
16	HUANG Sitong	16/38	42	1/4	3/8	4/6	0/1	1/2	7/17	
	TOTAL	19/41	46	1/4	3/8	4/6	3/4	1/2	7/17	0/0

Coach: Zsadányi Sándor

Number of attacks: 57, Efficiency: 44%, Average Duration: 32.04 seconds

Attack by type of defense

	Shots	9m	6m	Wing	TF	E7	E2
On def. 6-0	16/32	0/5	5/6	5/11	15	7	5
Fastbreak	1/2				0	0	0

Defense by type

	Total	9m	6m	Wing	Stl.	C7	2m
Def. 6-0	12/27	2/6	4/5	1/4	3	1	0
Def. 5-1	8/12	1/1	1/2	1/3	1	0	0
Fastbreak	1/2				0	0	3

Attack with superiority / minority / goalkeeper out

	Attack				Reaction		
	Att.	Eff.	Shots	TF	FB	LD	Tot.
7 on 6 (GK out)	3	67%	2/2	1	0/0	0/0	0/0
6 on 6 (GK out)	3	67%	2/3	0	0/0	0/0	0/0
6 on 6	40	35%	14/29	11			
6 on 5 (GK out)	2	100%	2/2	0	0/0	0/0	0/0
6 on 5	9	56%	5/6	3			

Player superiority / GK out counted at the end of attack (in case it changes during attack)

Defense with superiority / minority / goalkeeper out

	Attack				Reaction		
	Att.	Eff.	Shots	TF	FB	LD	Tot.
7 on 6 (GK out)	2	0%	0/2	0	0/0	0/0	0/0
7 on 5 (GK out)	2	50%	1/1	1	0/0	0/0	0/0
6 on 6 (GK out)	6	50%	3/4	2	0/0	0/0	0/0
6 on 5 (GK out)	1	100%	1/1	0	0/0	0/0	0/0
6 on 6	41	39%	16/32	9			
6 on 5	5	20%	1/3	2			

Numbers show attacking numbers of opponent. Lower efficiency of opponent means better defense of this team

Jersey number Tot. Total shooting 6m 6m (line) shooting 9m 9m shooting Wng Wing shooting FB Fastbreak sh. 7m 7m penalty sh.
 Brk. Breakthrough sh. LD Long distance sh. As. Assists PC Pass clear chance E7 Earned 7m pen. TF Technical faults St. Steals
 2m 2m punishments C7. Committed 7m E2 Earned 2m pun. YC. Yellow cards R/B Red/Blue cards Blk. Blocks S Starting Line-up



25th IHF Women's Junior World Championship 2026



Final Round, 13-16. place

Match Team Statistics

Match No. 85

Austria 22 - 25 P.R. of China

(15 - 13) (7 - 9) (SO: 0 - 3)

2.7.2026. 13:45

Attendance: 3800

Jinzhong City Gymnasium

Referees: Stefan Berdic (SRB) / Filip Sorak (SRB)

Shot distribution by player

3 F. Pan	5 J. Zhang	6 Y. Fu	8 J. Liang	9 S. Zhang	10 J. Hu	15 Y. Yang
0/1		1/1		2/2		
		0/1	1/1	2/3	0/1	1/1
0/1			0/2	5/5		
0/3		2 post 1 miss.	0/1			2/2
21 Z. Xing	23 Y. Zheng	26 Y. Liu	37 X. Chen	39 Y. Sha	55 Y. Liu	56 Y. Cheng
				0/1		
				0/1		1/1
1/1	0/1			1/1		1/1
				2/2 lob		1 post

TOTAL

3/4	1/2	1/2
3/4	1/4	7/7
3/5	1/3	3/7

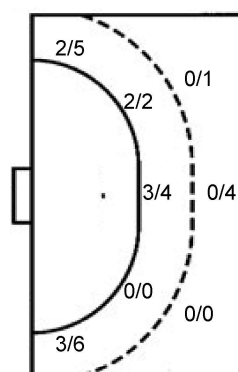
3 post 1 miss. 2/2 lob

Saves distribution goalkeepers

1 Y. Sun	16 S. Huang	TOTAL
	0/2	0/2
1/1	1/3	1/3
	1/1	1/1
	0/3	1/4
	2/9	4/5
	4/5	6/10
		7/11

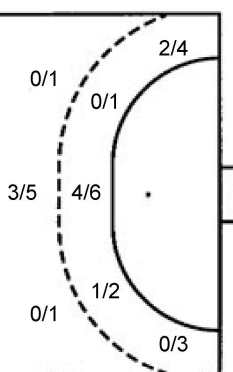
Shots by position

ATTACK



7m penalties 8/10
 Fastbreak 1/2
 Breakthrough 6/10
 Long dist. 0/0

DEFENSE



7m penalties 1/4
 Fastbreak 1/2
 Breakthrough 10/18
 Long dist. 0/0

Shooting statistics

Position	Goals	Sav.	Miss.	Post	Blk.	Total	%
Back (9m)	0	5	0	0	0	5	0
Line (6m)	5	1	0	0	0	6	83
Wing	5	4	1	1	0	11	45
7m penalties	8	1	0	1	0	10	80
Fastbreak	1	0	0	1	0	2	50
Breakthrough	6	4	0	0	0	10	60
Total	25	15	1	3	0	44	57

Jersey number Tot. Total shooting 6m 6m (line) shooting 9m 9m shooting Wng Wing shooting FB Fastbreak sh. 7m 7m penalty sh.
 Brk. Breakthrough sh. LD Long distance sh. As. Assists PC Pass clear chance E7 Earned 7m pen. TF Technical faults St. Steals
 2m 2m punishments C7. Committed 7m E2 Earned 2m pun. YC. Yellow cards R/B Red/Blue cards Blk. Blocks S Starting Line-up

