





# 25th IHF Women's Junior World Championship 2026



Final Round, Quarterfinals

## Match Team Statistics

Match No. 84

## Germany 23 - 22 Norway

(10 - 13) (13 - 9)

2.7.2026. 18:30

Attendance: 3100

Jinzhong City Gymnasium

Referees: Heidy Elsaied (EGY) / Yasmina Elsaied (EGY)

### Shot distribution by player

#### 3 J. Walther


#### 4 L. Egeling

	1/1	

1 post

#### 5 F. Njinkeu

		1/1
1/1	1/1	0/1

2 miss.

#### 6 A. Mittag

		0/1
0/1		

1 miss.

#### 7 C. Rohr

		1/1
1/1		
1/1	1/2	2/2

1 miss.

#### 8 R. Litvinov

	2/2	0/1

#### 11 L. Lammich

1/1		1/1

1 block

#### 13 A. Bornhardt

		1/1
		0/1
1/3		

#### 14 M. Kern

0/1		
		2/2

1 block

#### 17 E. Niemann

	0/1	

#### 18 L. Klocke

		0/2
0/1		

#### 20 M. Tucholke

1/1		
2/3	0/1	

1 miss. 2 block 1/1 lob

#### 21 K. Ott

0/1		
	0/2	
1/1		

#### 28 K. Goldammer


### TOTAL

1/2		2/5
2/4	0/2	2/3
6/10	5/8	4/6

1 post 5 miss. 4 block 1/1 lob

### Saves distribution goalkeepers

#### 16 L. Lindemann

2/3		0/4
3/7	5/5	1/6
2/3	2/4	1/5

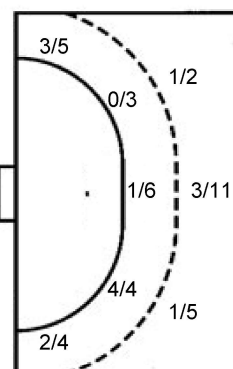
#### 35 L. Steinecke


### TOTAL

2/3		0/4
3/7	5/5	1/6
2/3	2/4	1/5

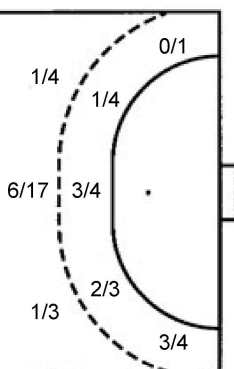
### Shots by position

#### ATTACK



7m penalties 1/2  
Fastbreak 1/1  
Breakthrough 3/5  
Long dist. 3/3

#### DEFENSE



7m penalties 2/2  
Fastbreak 1/2  
Breakthrough 2/3  
Long dist. 0/0

### Shooting statistics

Position	Goals	Sav.	Miss.	Post	Blk.	Total	%
Back (9m)	5	8	1	0	4	18	28
Line (6m)	5	7	1	0	0	13	38
Wing	5	2	1	1	0	9	56
7m penalties	1	0	1	0	0	2	50
Fastbreak	1	0	0	0	0	1	100
Breakthrough	3	1	1	0	0	5	60
<b>Total</b>	<b>20</b>	<b>18</b>	<b>5</b>	<b>1</b>	<b>4</b>	<b>48</b>	<b>42</b>

# Jersey number Tot. Total shooting 6m 6m (line) shooting 9m 9m shooting Wng Wing shooting FB Fastbreak sh. 7m 7m penalty sh.  
Brk. Breakthrough sh. LD Long distance sh. As. Assists PC Pass clear chance E7 Earned 7m pen. TF Technical faults St. Steals  
2m 2m punishments C7. Committed 7m E2 Earned 2m pun. YC. Yellow cards R/B Red/Blue cards Blk. Blocks S Starting Line-up

Handball statistics and livescore by Toma-soft ltd (www.toma-soft.hr)



# 25th IHF Women's Junior World Championship 2026



Final Round, Quarterfinals

Match Team Statistics

Match No. 84

## Germany 23 - 22 Norway

(10 - 13) (13 - 9)

2.7.2026. 18:30

Attendance: 3100

Jinzhong City Gymnasium

Referees: Heidy Elsaied (EGY) / Yasmina Elsaied (EGY)

### Norway

#	Surname and name	S	Goals / shots								Attack				Def.			Penalties				TP									
			Tot.	%	9m	6m	Wing	7m	FB	Brk.	LD	As.	PC	E7	E2	TF	St.	C7	Blk	YC	2m		R	B							
2	AALSTAD Ada	S	4/10	40	2/8										1	1														29:58	
4	HAGENES Maia Matre		3/5	60		3/5																								25:33	
6	BREEN Milla Haugerstuen	S	0/2	0				0/1			0/1												1		1					47:44	
8	REFSLAND Vilde																						1							13:18	
9	BARBOSA Sara Benedicte Fredheim																							1						19:18	
10	WITH Synne	S	4/5	80				3/4			1/1																			59:44	
12	LANGAARD Leah Isabell	S																												56:41	
13	LEINAN Maja	S	3/5	60		3/5																								33:06	
17	LITLAND Edle Eik		2/7	29	2/6																									30:02	
21	GULBRANDSEN Vanessa Braten																														
24	ELLINGSEN Julie	S	4/8	50	2/5	0/1					2/2			5	2															41:19	
27	HALLDORSSON Mali	S	2/5	40	2/5										2		1	3						1	1					35:20	
28	HELLEBUST Hennie Nygard																														
29	LÖFSTEDT Thea Ellen																														
35	LANGSETH Thilla Karoline Molle																		1	2										27:25	
36	GULLIKSEN Maja Linnea																													0:32	
	Team / bench																														
	TOTAL		22/47	47	8/24	6/11	3/5	2/2	1/2	2/3	0/0			9	7	2	2	16	4	2	4	0	1	0	0						

#	Surname and name	Saves / shots								
		Tot.	%	9m	6m	Wing	7m	FB	Brk.	LD
12	LANGAARD Leah Isabell	18/38	47	8/13	7/12	2/7	0/1	0/1	1/4	
28	HELLEBUST Hennie Nygard									
36	GULLIKSEN Maja Linnea									
	TOTAL	18/38	47	8/13	7/12	2/7	0/1	1/1	1/4	0/0

Coach: Axel Stefansson

Number of attacks: 61, Efficiency: 36%, Average Duration: 34.95 seconds

### Attack by type of defense

	Shots	9m	6m	Wing	TF	E7	E2
On def. 5-1	19/43	8/24	6/11	3/5	16	2	2
Fastbreak	1/2				0	0	0

### Defense by type

	Total	9m	6m	Wing	Stl.	C7	2m
Def. 6-0	17/43	5/18	4/11	5/9	3	2	0
Def. press.	0/0	0/0	0/0	0/0	1	0	0
Fastbreak	1/1				0	0	1

### Attack with superiority / minority / goalkeeper out

	Attack				Reaction		
	Att.	Eff.	Shots	TF	FB	LD	Tot.
7 on 6 (GK out)	7	29%	2/4	3	0/0	3/3	3/3
6 on 6 (GK out)	3	33%	1/1	2	1/1	0/0	1/1
6 on 6	49	37%	18/39	10			
6 on 5	2	50%	1/1	1			

Player superiority / GK out counted at the end of attack (in case it changes during attack)

### Defense with superiority / minority / goalkeeper out

	Attack				Reaction		
	Att.	Eff.	Shots	TF	FB	LD	Tot.
7 on 6 (GK out)	5	40%	2/4	1	0/0	0/0	0/0
7 on 5 (GK out)	1	100%	1/1	0	0/0	0/0	0/0
6 on 6 (GK out)	1	0%	0/1	0	0/0	0/0	0/0
6 on 6	53	36%	19/42	11			
6 on 5	2	50%	1/1	1			

Numbers show attacking numbers of opponent. Lower efficiency of opponent means better defense of this team

# Jersey number Tot. Total shooting 6m 6m (line) shooting 9m 9m shooting Wng Wing shooting FB Fastbreak sh. 7m 7m penalty sh.  
 Brk. Breakthrough sh. LD Long distance sh. As. Assists PC Pass clear chance E7 Earned 7m pen. TF Technical faults St. Steals  
 2m 2m punishments C7. Committed 7m E2 Earned 2m pun. YC. Yellow cards R/B Red/Blue cards Blk. Blocks S Starting Line-up

Handball statistics and livescore by Toma-soft ltd (www.toma-soft.hr)



# 25th IHF Women's Junior World Championship 2026



Final Round, Quarterfinals

Match Team Statistics

Match No. 84

## Germany 23 - 22 Norway

(10 - 13) (13 - 9)

2.7.2026. 18:30

Attendance: 3100

Jinzhong City Gymnasium

Referees: Heidy Elsaied (EGY) / Yasmina Elsaied (EGY)

### Shot distribution by player

#### 2 A. Aalstad

0/1		3/3
0/2	0/2	
		1/1

1 block

#### 4 M. Hagenes

	2/3	1/1

1 post

#### 6 M. Breen

0/1		0/1

#### 8 V. Refsland


#### 9 S. Barbosa


#### 10 S. With

		3/3
	0/1	

1/1 lob

#### 13 M. Leinan

1/1		
1/2		1/1

1 post

#### 17 E. Litland

0/1		
2/2	0/1	0/1

1 post 1 block

#### 21 V. Gulbrandsen


#### 24 J. Ellingsen

		1/1
1/1	0/2	
1/1		1/1

2 block

#### 27 M. Halldorsson

		1/1
0/1		1/1

1 post 1 miss.

#### 29 T. Löfstedt


#### 35 T. Langseth


#### TOTAL

1/3		4/4
4/7	0/5	5/6
1/3	2/4	4/5

4 post 1 miss. 4 block 1/1 lob

### Saves distribution goalkeepers

#### 12 L. Langaard

1/2		3/5
2/4	2/2	1/3
4/10	3/5	2/6

#### 28 H. Hellebust

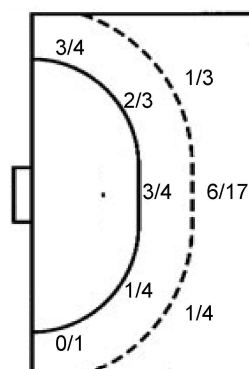

#### 36 M. Gulliksen


#### TOTAL

1/2		3/5
2/4	2/2	1/3
4/10	3/5	2/6

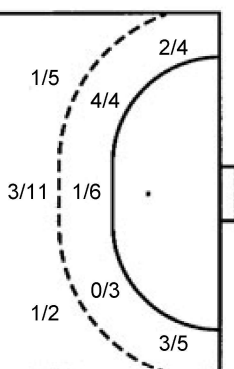
### Shots by position

#### ATTACK



7m penalties	2/2
Fastbreak	1/2
Breakthrough	2/3
Long dist.	0/0

#### DEFENSE



7m penalties	1/2
Fastbreak	1/1
Breakthrough	3/5
Long dist.	3/3

### Shooting statistics

Position	Goals	Sav.	Miss.	Post	Blk.	Total	%
Back (9m)	8	9	1	2	4	24	33
Line (6m)	6	3	0	2	0	11	55
Wing	3	2	0	0	0	5	60
7m penalties	2	0	0	0	0	2	100
Fastbreak	1	1	0	0	0	2	50
Breakthrough	2	1	0	0	0	3	67
<b>Total</b>	<b>22</b>	<b>16</b>	<b>1</b>	<b>4</b>	<b>4</b>	<b>47</b>	<b>47</b>

# Jersey number Tot. Total shooting 6m 6m (line) shooting 9m 9m shooting Wng Wing shooting FB Fastbreak sh. 7m 7m penalty sh.  
 Brk. Breakthrough sh. LD Long distance sh. As. Assists PC Pass clear chance E7 Earned 7m pen. TF Technical faults St. Steals  
 2m 2m punishments C7. Committed 7m E2 Earned 2m pun. YC. Yellow cards R/B Red/Blue cards Blk. Blocks S Starting Line-up

