



25th IHF Women's Junior World Championship 2026



Final Round, 9-12. place

Match Team Statistics

Match No. 82

Romania 24 - 25 Poland

(14 - 15) (10 - 10)

2.7.2026. 13:45

Attendance: 500

Jinzhong College Gymnasium

Referees: Ahmad Gheisarian (IRI) / Amir Gheisarian (IRI)

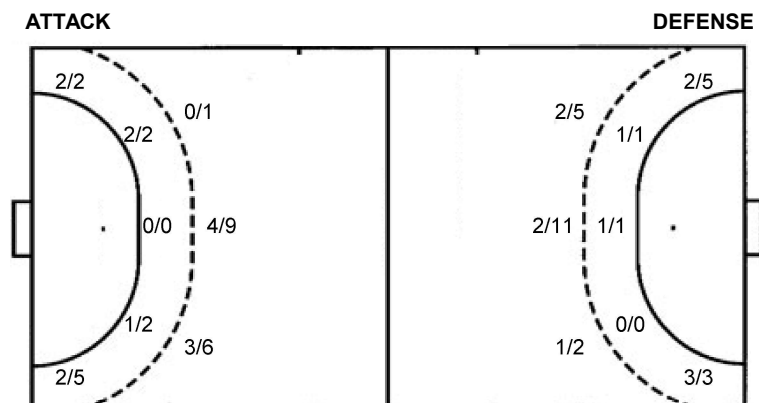
Shot distribution by player

2 A. Nită	4 E. Marton	5 M. Voicu	6 D. Mihăilă	7 M. Ciubotaru	8 T. Damian	11 A. Stan
0/1						0/1
1/1					1/2	0/1
1/1	0/1	1/1			4/4	1/1
2/2	0/1				2/3	
1 post			1 miss.		2 post 2 block 2/2 lob	1 miss.
17 A. Serban	20 D. Utan	22 S. Truscă	37 I. Hrenaru	59 R. Rusu	84 E. Bodijar	TOTAL
	0/1				1/1	0/1
						1/2
1/1		2/2	1/1		1/1	1/1
2/3					1/3	0/1
3 block					1 post 1 block	10/11
						9/14
						4 post 2 miss. 6 block 2/2 lob

Saves distribution goalkeepers

1 B. Tunariu	12 I. Nită	16 F. Rosu	TOTAL
1/2	0/1	0/2	1/4
2/4	1/2	1/2	1/3
0/2	0/1	2/2	2/2
0/1	2/3	1/1	1/4
1/1	1/3	2/6	2/2
1/2		0/1	2/6

Shots by position



7m penalties 4/5
Fastbreak 0/1
Breakthrough 5/12
Long dist. 1/2

7m penalties 4/8
Fastbreak 2/3
Breakthrough 6/13
Long dist. 1/3

Shooting statistics

Position	Goals	Sav.	Miss.	Post	Blk.	Total	%
Back (9m)	7	4	0	0	5	16	44
Line (6m)	3	1	0	0	0	4	75
Wing	4	1	1	1	0	7	57
7m penalties	4	1	0	0	0	5	80
Fastbreak	0	0	1	0	0	1	0
Breakthrough	5	4	0	2	1	12	42
Total	23	11	2	3	6	45	51

Jersey number Tot. Total shooting 6m 6m (line) shooting 9m 9m shooting Wng Wing shooting FB Fastbreak sh. 7m 7m penalty sh.
Brk. Breakthrough sh. LD Long distance sh. As. Assists PC Pass clear chance E7 Earned 7m pen. TF Technical faults St. Steals
2m 2m punishments C7. Committed 7m E2 Earned 2m pun. YC. Yellow cards R/B Red/Blue cards Blk. Blocks S Starting Line-up

Handball statistics and livescore by Toma-soft ltd (www.toma-soft.hr)



25th IHF Women's Junior World Championship 2026



Final Round, 9-12. place

Match Team Statistics

Romania 24 - 25 Poland

2.7.2026. 13:45

Match No. 82

(14 - 15) (10 - 10)

Attendance: 500

Jinzhong College Gymnasium

Referees: Ahmad Gheisarian (IRI) / Amir Gheisarian (IRI)

Poland

#	Surname and name	S	Goals / shots									Attack					Def.			Penalties				TP										
			Tot.	%	9m	6m	Wing	7m	FB	Brk.	LD	As.	PC	E7	E2	TF	St.	C7	Bik	YC	2m	R	B											
1	KALBARCZYK Joanna																																	0:03
3	WRZESINSKA Marta	S														2	1		1														21:39	
4	MACHNIO Michalina		2/4	50	0/1											4	1																23:47	
5	MAZURKIEWICZ Maria	S	1/7	14	0/3	1/1			0/2					1		1				2													45:03	
6	KEPKA Lena	S	2/4	50			2/4							1						1													41:11	
8	GARDIAN Natalia	S	0/5	0	0/3									0/1	0/1	2	2	1	1			1											33:22	
9	GRZESISTA Julia		5/8	63	2/5	1/1								1/1	1/1											3		1	1				27:51	
10	KRUPA Zuzanna																																	
12	SMELCERZ Nina																																	0:35
13	PAWŁOWSKA Oliwia															1	1	2									2						31:17	
14	SCHLABS Maja		1/2	50	1/1																												17:20	
22	BIESAGA Maria																																	2:30
30	PENTEK Maria	S	0/1	0										0/1	1																		54:08	
42	CHWOJNICKA Zofia	S	4/6	67			3/3	0/1	1/2																									57:05
44	ZIMNICKA Zuzanna	S	10/17	59	2/5			4/5	1/1	3/6				2	2	1	1	2																46:54
77	SZYMANSKA Emilia		0/1	0			0/1																											16:58
Team / bench																																		
TOTAL			25/55	45	5/18	2/2	5/8	4/8	2/3	6/13	1/3			7	4	8	5	10	2	5	6	0	4	1	0									

#	Surname and name	Saves / shots								
		Tot.	%	9m	6m	Wing	7m	FB	Brk.	LD
1	KALBARCZYK Joanna									
12	SMELCERZ Nina	0/2	0				0/2			
30	PENTEK Maria	11/32	34	4/11	1/4	1/5	1/3		4/9	
TOTAL		11/34	32	4/11	1/4	1/5	1/5	0/0	4/9	0/0

Coach: Marek Jagodziński

Number of attacks: 58, Efficiency: 43%, Average Duration: 33.93 seconds

Attack by type of defense

	Shots	9m	6m	Wing	TF	E7	E2
On def. 6-0	18/41	5/18	2/2	5/8	10	8	5
Fastbreak	2/3				0	0	0

Defense by type

	Total	9m	6m	Wing	Stl.	C7	2m
Def. 6-0	11/22	5/10	1/1	3/4	0	1	0
Def. 5-1	8/17	2/6	2/3	1/3	2	4	0
Fastbreak	0/1				0	0	4

Attack with superiority / minority / goalkeeper out

	Attack				Reaction		
	Att.	Eff.	Shots	TF	FB	LD	Tot.
7 on 6 (GK out)	2	50%	1/2	0	0/0	0/0	0/0
6 on 6 (GK out)	5	40%	2/4	1	0/1	1/1	1/2
6 on 6	38	34%	13/31	7			
5 on 6	1	0%	0/1	0			
7 on 5 (GK out)	2	100%	2/2	0	0/0	0/0	0/0
6 on 5 (GK out)	1	0%	0/0	1	0/0	0/1	0/1
6 on 5	9	78%	7/8	1			

Player superiority / GK out counted at the end of attack (in case it changes during attack)

Defense with superiority / minority / goalkeeper out

	Attack				Reaction		
	Att.	Eff.	Shots	TF	FB	LD	Tot.
7 on 6 (GK out)	6	67%	4/6	0	0/0	1/3	1/3
7 on 5 (GK out)	1	0%	0/1	0	0/0	0/0	0/0
6 on 6 (GK out)	8	63%	5/7	1	0/0	0/0	0/0
6 on 5 (GK out)	1	0%	0/1	0	0/0	0/0	0/0
6 on 6	32	31%	10/23	9			
6 on 5	9	56%	5/7	2			
5 on 5	1	0%	0/1	0			

Numbers show attacking numbers of opponent. Lower efficiency of opponent means better defense of this team

Jersey number Tot. Total shooting 6m 6m (line) shooting 9m 9m shooting Wng Wing shooting FB Fastbreak sh. 7m 7m penalty sh.
 Brk. Breakthrough sh. LD Long distance sh. As. Assists PC Pass clear chance E7 Earned 7m pen. TF Technical faults St. Steals
 2m 2m punishments C7. Committed 7m E2 Earned 2m pun. YC. Yellow cards R/B Red/Blue cards Blk. Blocks S Starting Line-up

Handball statistics and livescore by Toma-soft ltd (www.toma-soft.hr)



25th IHF Women's Junior World Championship 2026



Final Round, 9-12. place

Match Team Statistics

Match No. 82

Romania 24 - 25 Poland

(14 - 15) (10 - 10)

2.7.2026. 13:45

Attendance: 500

Jinzhong College Gymnasium

Referees: Ahmad Gheisarian (IRI) / Amir Gheisarian (IRI)

Shot distribution by player

3 M. Wrzesińska

4 M. Machnio

	1/1	
		1/1

1 post 1 miss.

5 M. Mazurkiewicz

		0/1
0/1		1/1

1 post 2 miss. 1 block

6 L. Kepka

		1/1
0/1		0/1

1/1 lob

8 N. Gardian

	0/1	0/1

1 miss. 2 block

9 J. Grzesista

		1/2
0/1	1/1	0/1
1/1		2/2

10 Z. Krupa

13 O. Pawłowska

14 M. Schlabs

	0/1	
		1/1

22 M. Biesaga

42 Z. Chwojnicka

2/2	1/1	
1/1		

2 post

44 Z. Zimnicka

1/1		3/4
		1/1
4/7	0/1	1/1

1 post 1 miss.

77 E. Szymańska

0/1		

TOTAL

3/4	2/3	5/8
0/2	1/1	3/4
6/10	0/2	4/6

5 post 5 miss. 3 block 1/1 lob

Saves distribution goalkeepers

1 J. Kalbarczyk

12 N. Smelcerz

30 M. Pentek

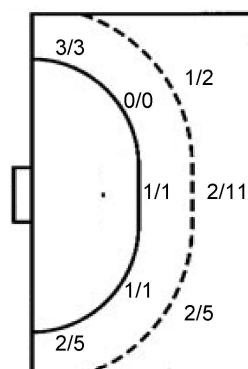
1/1		2/3
1/2		1/1
1/11		5/14

TOTAL

1/1		2/3
1/2		1/1
1/11		5/14

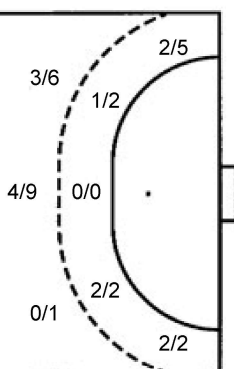
Shots by position

ATTACK



7m penalties	4/8
Fastbreak	2/3
Breakthrough	6/13
Long dist.	1/3

DEFENSE



7m penalties	4/5
Fastbreak	0/1
Breakthrough	5/12
Long dist.	1/2

Shooting statistics

Position	Goals	Sav.	Miss.	Post	Blk.	Total	%
Back (9m)	5	8	1	1	3	18	28
Line (6m)	2	0	0	0	0	2	100
Wing	5	3	0	0	0	8	63
7m penalties	4	0	2	2	0	8	50
Fastbreak	2	0	0	1	0	3	67
Breakthrough	6	5	1	1	0	13	46
Total	24	16	4	5	3	52	46

Jersey number Tot. Total shooting 6m 6m (line) shooting 9m 9m shooting Wng Wing shooting FB Fastbreak sh. 7m 7m penalty sh.
 Brk. Breakthrough sh. LD Long distance sh. As. Assists PC Pass clear chance E7 Earned 7m pen. TF Technical faults St. Steals
 2m 2m punishments C7. Committed 7m E2 Earned 2m pun. YC. Yellow cards R/B Red/Blue cards Blk. Blocks S Starting Line-up

Handball statistics and livescore by Toma-soft ltd (www.toma-soft.hr)

