



25th IHF Women's Junior World Championship 2026



Final Round, 9-12. place

Match Team Statistics

Sweden 30 - 21 Czechia

2.7.2026. 11:30

Match No. 81

(10 - 13) (20 - 8)

Attendance: 300

Jinzhong College Gymnasium

Referees: German Araujo (URU) / Nicolas Perdomo (URU)

Sweden

Players		Goals / shots									Attack					Def.			Penalties				TP		
#	Surname and name	S	Tot.	%	9m	6m	Wing	7m	FB	Brk.	LD	As.	PC	E7	E2	TF	St.	C7	Blk	YC	2m	R		B	
1	BÖRJESSON Tyra																								
2	HESTNER OLSSON Selma	S	2/4	50	0/1	1/1			1/1	0/1		2	1			1									33:27
4	RYDÉN Isabelle	S	2/4	50		2/3				0/1					1			1	3		1				56:37
5	KALLIO Caroline																								3:49
9	DITTSCHLAG Märtha	S	5/5	100		4/4		1/1							1		1								60:00
11	TÖRDAL Alice		1/1	100	1/1																				2:27
12	SAUL Wilma	S										1													28:50
13	BÖRJESSON Ebba		6/11	55	3/8	1/1		1/1		1/1		2	4		1	2									23:22
14	LUNDVALL Hanna	S	5/8	63	3/5					2/3		6		1	1	2	1		1		1				52:01
15	MAGNUSSON Moa																								2:39
16	DANIELSSON Anna											2				1									29:06
17	KNUTSSON Hilma		1/1	100					1/1						1	4		1							25:22
25	ILVELL Elsa																								
28	BERGLING Klara	S	6/10	60		1/1	2/6		3/3																56:15
32	LILJA Smilla	S	2/4	50	0/2				1/1	1/1		2				1									38:25
35	LUNDIN Lisa															1		1							7:40
	Team / bench															1									
	TOTAL		30/48	63	7/17	5/6	6/10	1/1	7/7	4/7	0/0	15	5	1	5	13	2	3	4	0	3	0	0		

Goalkeepers		Saves / shots								
#	Surname and name	Tot.	%	9m	6m	Wing	7m	FB	Brk.	LD
1	BÖRJESSON Tyra									
12	SAUL Wilma	5/17	29	0/3	2/5	2/2	0/2		1/5	
16	DANIELSSON Anna	8/17	47	2/5	3/4	2/4	0/1		1/3	
	TOTAL	13/34	38	2/8	5/9	4/6	0/3	0/0	2/8	0/0

Coach: Fredrik Söderberg Wernheim

Number of attacks: 56, Efficiency: 54%, Average Duration: 28.95 seconds

Attack by type of defense

	Shots	9m	6m	Wing	TF	E7	E2
On def. 6-0	22/40	7/17	5/6	6/10	13	1	5
Fastbreak	7/7				0	0	0

Defense by type

	Total	9m	6m	Wing	Stl.	C7	2m
Def. 6-0	18/42	6/14	4/11	2/7	2	3	0
Fastbreak	0/2				0	0	3

Attack with superiority / minority / goalkeeper out

	Attack				Reaction		
	Att.	Eff.	Shots	TF	FB	LD	Tot.
7 on 5 (GK out)	1	100%	1/1	0	0/0	0/0	0/0
6 on 6 (GK out)	2	0%	0/1	1	0/0	0/0	0/0
6 on 6	43	51%	22/32	11			
6 on 5	10	70%	7/9	1			

Player superiority / GK out counted at the end of attack (in case it changes during attack)

Defense with superiority / minority / goalkeeper out

	Attack				Reaction		
	Att.	Eff.	Shots	TF	FB	LD	Tot.
7 on 6 (GK out)	6	33%	2/5	1	1/1	0/0	1/1
6 on 6 (GK out)	5	80%	4/5	0	0/0	0/0	0/0
6 on 6	39	33%	13/32	7			
5 on 6	2	0%	0/1	1			
6 on 5	5	40%	2/4	1			

Numbers show attacking numbers of opponent. Lower efficiency of opponent means better defense of this team

Jersey number Tot. Total shooting 6m 6m (line) shooting 9m 9m shooting Wng Wing shooting FB Fastbreak sh. 7m 7m penalty sh.
 Brk. Breakthrough sh. LD Long distance sh. As. Assists PC Pass clear chance E7 Earned 7m pen. TF Technical faults St. Steals
 2m 2m punishments C7. Committed 7m E2 Earned 2m pun. YC. Yellow cards R/B Red/Blue cards Blk. Blocks S Starting Line-up

Handball statistics and livescore by Toma-soft ltd (www.toma-soft.hr)



25th IHF Women's Junior World Championship 2026



Final Round, 9-12. place

Match Team Statistics

Match No. 81

Sweden 30 - 21 Czechia

(10 - 13) (20 - 8)

2.7.2026. 11:30

Attendance: 300

Jinzhong College Gymnasium

Referees: German Araujo (URU) / Nicolas Perdomo (URU)

Shot distribution by player

2 S. Hestner Olsson

		1/1
0/1		1/1

1 block

4 I. Rydén

0/1		
1/1		

1 post

5 C. Kallio

9 M. Dittschlag

2/2		
		2/2

1/1 lob

11 A. Tördal

1/1		

13 E. Börjesson

1/1		2/2
0/1		3/3

2 miss. 2 block

14 H. Lundvall

		1/1
1/1		1/1
2/2		0/2

1 block

15 M. Magnusson

17 H. Knutsson

		1/1

25 E. Ilvell

28 K. Bergling

		0/1
0/1		0/1
1/1		5/5

1 post

32 S. Lilja

0/1		2/3

35 L. Lundin

TOTAL

2/2		2/3
2/4		3/4
5/8		14/17

2 post 2 miss. 4 block 1/1 lob

Saves distribution goalkeepers

1 T. Börjesson

12 W. Saul

1/2		0/1
1/2		
0/4	0/1	3/6

16 A. Danielsson

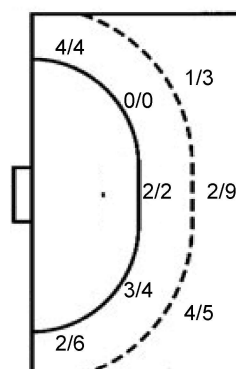
		0/1
2/2	1/1	1/1
2/6		2/5

TOTAL

1/2		0/2
3/4	1/1	1/1
2/10	0/1	5/11

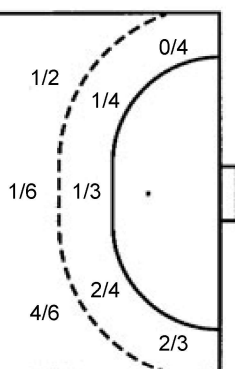
Shots by position

ATTACK



7m penalties	1/1
Fastbreak	7/7
Breakthrough	4/7
Long dist.	0/0

DEFENSE



7m penalties	3/3
Fastbreak	0/2
Breakthrough	6/10
Long dist.	0/0

Shooting statistics

Position	Goals	Sav.	Miss.	Post	Blk.	Total	%
Back (9m)	7	4	2	0	4	17	41
Line (6m)	5	0	0	1	0	6	83
Wing	6	3	0	1	0	10	60
7m penalties	1	0	0	0	0	1	100
Fastbreak	7	0	0	0	0	7	100
Breakthrough	4	3	0	0	0	7	57
Total	30	10	2	2	4	48	63

Jersey number Tot. Total shooting 6m 6m (line) shooting 9m 9m shooting Wng Wing shooting FB Fastbreak sh. 7m 7m penalty sh.
 Brk. Breakthrough sh. LD Long distance sh. As. Assists PC Pass clear chance E7 Earned 7m pen. TF Technical faults St. Steals
 2m 2m punishments C7. Committed 7m E2 Earned 2m pun. YC. Yellow cards R/B Red/Blue cards Blk. Blocks S Starting Line-up

Handball statistics and livescore by Toma-soft ltd (www.toma-soft.hr)



25th IHF Women's Junior World Championship 2026



Final Round, 9-12. place

Match Team Statistics
Match No. 81

Sweden 30 - 21 Czechia
(10 - 13) (20 - 8)

2.7.2026. 11:30
Attendance: 300
Jinzhong College Gymnasium

Referees: German Araujo (URU) / Nicolas Perdomo (URU)

Czechia

Players		Goals / shots									Attack					Def.			Penalties				TP		
#	Surname and name	S	Tot.	%	9m	6m	Wing	7m	FB	Brk.	LD	As.	PC	E7	E2	TF	St.	C7	Blk	YC	2m	R	B		
2	KRAPKOVA Michaela		1/4	25		1/1	0/2		0/1																24:07
5	RAMPOVA Claudia	S	0/3	0			0/2			0/1															35:53
6	PAZDEROVA Tereza		2/5	40		0/2	2/3														1				43:56
7	VRBKOVA Viktorie		0/5	0	0/3	0/1				0/1				1	1	2									28:54
9	CHALOUPKOVA Anna																								2:08
10	MATEJKOVA Regina	S	1/2	50		0/1				1/1						1									23:20
11	HOLENAKOVA Melisa	S	4/7	57	1/3	0/1		1/1		2/2		2	4			1			1		1				43:21
12	CHVATALOVA Adela	S																							48:34
13	PEJSOVA Viktorie	S	3/5	60	2/3	1/1				0/1		1	3	1		2			1		1				32:47
19	POSPISILOVA Tereza	S	1/1	100		1/1										2			1						42:09
20	BABOROVSKA Natálie		1/3	33					0/1	1/2											1				12:03
21	POLANKOVA Markéta													1	1										17:19
22	FILIPKOVA Tereza	S	8/10	80	3/5	1/1		2/2		2/2		1	1		1	1	1								36:18
25	KNEDLOVA Viktorie		0/2	0		0/2															1				19:30
26	CHODOUNSKA Anna																								2:27
27	BUCHTOVA Andrea																								5:55
Team / bench																1					1				
TOTAL			21/47	45	6/14	4/11	2/7	3/3	0/2	6/10	0/0	4	8	3	3	10	1	1	4	1	5	0	0		

Goalkeepers		Saves / shots								
#	Surname and name	Tot.	%	9m	6m	Wing	7m	FB	Brk.	LD
12	CHVATALOVA Adela	8/33	24	3/8	0/5	2/7		0/6	3/7	
27	BUCHTOVA Andrea	2/7	29	1/3		1/2	0/1	0/1		
TOTAL		10/40	25	4/11	0/5	3/9	0/1	0/7	3/7	0/0

Coach: Dušan Poloz

Number of attacks: 57, Efficiency: 37%, Average Duration: 34.42 seconds

Attack by type of defense

	Shots	9m	6m	Wing	TF	E7	E2
On def. 6-0	18/42	6/14	4/11	2/7	10	3	3
Fastbreak	0/2				0	0	0

Defense by type

	Total	9m	6m	Wing	Stl.	C7	2m
Def. 6-0	22/40	7/17	5/6	6/10	1	1	0
Fastbreak	7/7				0	0	5

Attack with superiority / minority / goalkeeper out

	Attack				Reaction		
	Att.	Eff.	Shots	TF	FB	LD	Tot.
7 on 6 (GK out)	6	33%	2/5	1	1/1	0/0	1/1
6 on 6 (GK out)	5	80%	4/5	0	0/0	0/0	0/0
6 on 6	39	33%	13/32	7			
5 on 6	2	0%	0/1	1			
6 on 5	5	40%	2/4	1			

Player superiority / GK out counted at the end of attack (in case it changes during attack)

Defense with superiority / minority / goalkeeper out

	Attack				Reaction		
	Att.	Eff.	Shots	TF	FB	LD	Tot.
7 on 5 (GK out)	1	100%	1/1	0	0/0	0/0	0/0
6 on 6 (GK out)	2	0%	0/1	1	0/0	0/0	0/0
6 on 6	43	51%	22/32	11			
6 on 5	10	70%	7/9	1			

Numbers show attacking numbers of opponent. Lower efficiency of opponent means better defense of this team

Jersey number Tot. Total shooting 6m 6m (line) shooting 9m 9m shooting Wng Wing shooting FB Fastbreak sh. 7m 7m penalty sh.
Brk. Breakthrough sh. LD Long distance sh. As. Assists PC Pass clear chance E7 Earned 7m pen. TF Technical faults St. Steals
2m 2m punishments C7. Committed 7m E2 Earned 2m pun. YC. Yellow cards R/B Red/Blue cards Blk. Blocks S Starting Line-up



25th IHF Women's Junior World Championship 2026



Final Round, 9-12. place

Match Team Statistics

Match No. 81

Sweden 30 - 21 Czechia

(10 - 13) (20 - 8)

2.7.2026. 11:30

Attendance: 300

Jinzhong College Gymnasium

Referees: German Araujo (URU) / Nicolas Perdomo (URU)

Shot distribution by player

2 M. Krapková

1/1		
0/1		0/1

1 post

5 C. Rampová

		0/3

6 T. Pazderová

0/1		
1/1		1/1

2 miss.

7 V. Vrbková

1 post 1 miss. 3 block

9 A. Chaloupková

10 R. Matějková

0/1		
1/1		

11 M. Holeňáková

		0/1
2/3		1/1

1 miss. 1/1 lob

13 V. Pejšová

1/1		
	0/1	
1/1		1/1

1 block

19 T. Pospíšilová

		1/1

20 N. Baborovská

	1/1	

2 miss.

21 M. Polanková

22 T. Filipková

		2/2
3/3		2/3

1 miss. 1/1 lob

25 V. Knedlová

0/1		
0/1		

26 A. Chodounská

TOTAL

1/2		2/2
1/4	0/1	0/1
8/10	1/1	6/11

2 post 7 miss. 4 block 2/2 lob

Saves distribution goalkeepers

12 A. Chvátalová

0/2		1/3
2/4		0/3
3/6		2/13

27 A. Buchtová

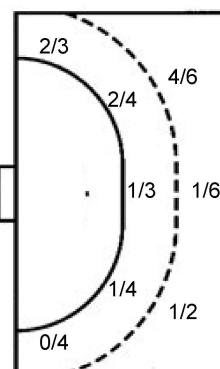
		1/1
0/2		1/4

TOTAL

0/2		1/3
2/4		1/4
3/8		3/17

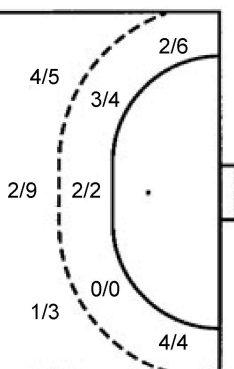
Shots by position

ATTACK



7m penalties	3/3
Fastbreak	0/2
Breakthrough	6/10
Long dist.	0/0

DEFENSE



7m penalties	1/1
Fastbreak	7/7
Breakthrough	4/7
Long dist.	0/0

Shooting statistics

Position	Goals	Sav.	Miss.	Post	Blk.	Total	%
Back (9m)	6	2	2	0	4	14	43
Line (6m)	4	5	2	0	0	11	36
Wing	2	4	1	0	0	7	29
7m penalties	3	0	0	0	0	3	100
Fastbreak	0	0	1	1	0	2	0
Breakthrough	6	2	1	1	0	10	60
Total	21	13	7	2	4	47	45

Jersey number Tot. Total shooting 6m 6m (line) shooting 9m 9m shooting Wng Wing shooting FB Fastbreak sh. 7m 7m penalty sh.
 Brk. Breakthrough sh. LD Long distance sh. As. Assists PC Pass clear chance E7 Earned 7m pen. TF Technical faults St. Steals
 2m 2m punishments C7. Committed 7m E2 Earned 2m pun. YC. Yellow cards R/B Red/Blue cards Blk. Blocks S Starting Line-up

Handball statistics and livescore by Toma-soft ltd (www.toma-soft.hr)

