



25th IHF Women's Junior World Championship 2026



Main Round - Group IV, 2. round

Match Team Statistics

Match No. 80

Hungary 27 - 30 Norway

(15 - 14) (12 - 16)

30.6.2026. 18:30

Attendance: 490

Jinzhong University

Gymnasium

Referees: Bruna Correa (BRA) / Renata Correa (BRA)

Hungary

#	Surname and name	S	Goals / shots								Attack				Def.			Penalties				TP						
			Tot.	%	9m	6m	Wing	7m	FB	Brk.	LD	As.	PC	E7	E2	TF	St.	C7	Blk	YC	2m		R	B				
7	VADKERTI Luca		4/4	100					2/2			1/1	1/1		1													29:11
8	FEHÉR Luca	S	2/4	50				0/2		2/2																		44:05
16	HORVÁTH Zelda																											24:01
18	SZILÁGYI Diána													1														29:02
19	FAZEKAS Virág		6/10	60	2/4				1/2	1/1	2/3			4	2			4	1									20:15
26	KACSO Noémi		0/1	0					0/1																			0:52
41	BALÁZS Bítia	S	0/1	0				0/1																				18:50
49	SZEIBERT Anna Rebeka	S	3/6	50	1/3	0/1				1/1	1/1								1									32:46
55	VARGA Katalin		0/2	0		0/2												1		1					2			22:06
57	KECELI-MÉSZÁROS Renáta	S	2/7	29	0/1						2/6			1	2	1	1	5	2									27:37
66	RÉDECSI Polett		1/2	50						1/2				1	1			1										11:02
67	TEPLÁN Korina		3/4	75			3/4																					34:28
74	SERES Liza	S	2/3	67		2/3										1		1										38:11
77	KRISTON Kíra	S	2/2	100							2/2			1	2	1	2			1	1							50:28
78	PÁLMAI Liza		2/4	50	1/3					1/1						1												32:36
85	MAJOROS Gréta	S																										4:30
	Team / bench																											
	TOTAL		27/50	54	4/11	2/6	3/7	3/5	4/4	10/16	1/1			8	7	5	3	11	5	2	2	0	2	0	0			

#	Surname and name	Saves / shots								
		Tot.	%	9m	6m	Wing	7m	FB	Brk.	LD
16	HORVÁTH Zelda	8/21	38	5/8	0/3	1/4	0/2	1/1	1/3	
18	SZILÁGYI Diána	7/20	35	5/12	0/1	0/2		0/1	2/4	
85	MAJOROS Gréta	0/4	0			0/1			0/3	
	TOTAL	15/45	33	10/20	0/4	1/7	0/2	1/2	3/10	0/0

Coach: **Beáta Bohus**

Number of attacks: 59, Efficiency: 46%, Average Duration: 30.91 seconds

Attack by type of defense

	Shots	9m	6m	Wing	TF	E7	E2
On def. 6-0	19/40	4/11	2/6	3/7	11	5	3
Fastbreak	4/4				0	0	0

Defense by type

	Total	9m	6m	Wing	Stl.	C7	2m
Def. 6-0	24/44	10/25	2/2	5/6	3	2	0
Def. press.	3/3	0/0	2/2	1/1	2	0	0
Fastbreak	1/2				0	0	2

Attack with superiority / minority / goalkeeper out

	Attack				Reaction		
	Att.	Eff.	Shots	TF	FB	LD	Tot.
7 on 6 (GK out)	3	33%	1/3	0	0/0	0/0	0/0
6 on 6 (GK out)	2	0%	0/1	1	0/0	0/0	0/0
6 on 6	47	47%	22/40	7			
6 on 5	7	57%	4/4	3			

Player superiority / GK out counted at the end of attack (in case it changes during attack)

Defense with superiority / minority / goalkeeper out

	Attack				Reaction		
	Att.	Eff.	Shots	TF	FB	LD	Tot.
7 on 6 (GK out)	1	100%	1/1	0	0/0	0/0	0/0
6 on 6 (GK out)	5	20%	1/4	1	0/0	1/1	1/1
6 on 6	48	52%	25/39	9			
5 on 6	1	0%	0/1	0			
6 on 5	4	75%	3/3	1			

Numbers show attacking numbers of opponent. Lower efficiency of opponent means better defense of this team

Jersey number Tot. Total shooting 6m 6m (line) shooting 9m 9m shooting Wng Wing shooting FB Fastbreak sh. 7m 7m penalty sh.
 Brk. Breakthrough sh. LD Long distance sh. As. Assists PC Pass clear chance E7 Earned 7m pen. TF Technical faults St. Steals
 2m 2m punishments C7 Committed 7m E2 Earned 2m pun. YC Yellow cards R/B Red/Blue cards Blk. Blocks S Starting Line-up

Handball statistics and livescore by Toma-soft ltd (www.toma-soft.hr)



25th IHF Women's Junior World Championship 2026



Main Round - Group IV, 2. round

Match Team Statistics

Match No. 80

Hungary 27 - 30 Norway

(15 - 14) (12 - 16)

30.6.2026. 18:30

Attendance: 490

Jinzhong University

Gymnasium

Referees: Bruna Correa (BRA) / Renata Correa (BRA)

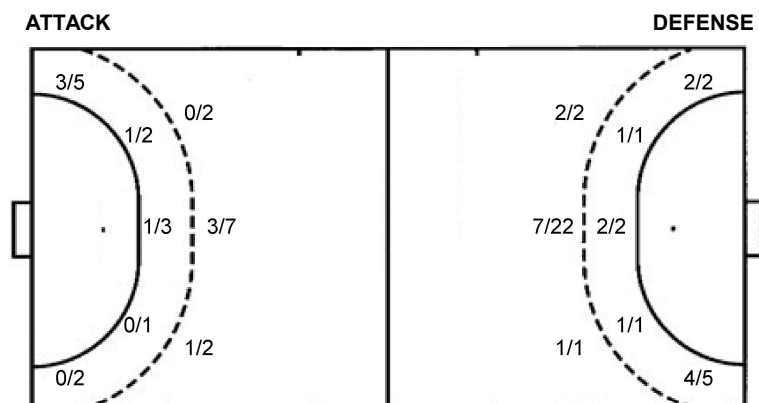
Shot distribution by player

7 L. Vadkerti 1/1 3/3	8 L. Fehér 1/1 0/1 1 miss. 1/1 lob	19 V. Fazekas 1/1 1/2 3/3 2 post 1 block	26 N. Kacsó 1 post	41 B. Balázs 0/1	49 A. Szeibert 1/1 1/1 2 miss. 0/1 1/1	55 K. Varga 0/1 0/1	57 R. Keceli-Mészáros 0/1 0/1 1/3 1 miss.	66 P. Rédecsi 1/1 1 miss.	67 K. Teplán 1/1 1/2 1/1	74 L. Seres 1/2 1/1	77 K. Kriston 1/1 1/1	78 L. Pálmai 2/2 1 miss. 1 block	TOTAL 3/4 2/2 6/9 0/1 1/2 1/3 4/5 0/2 9/10 3 post 6 miss. 2 block 1/1 lob
------------------------------------	--	---	------------------------------	----------------------------	--	----------------------------------	--	--	--	----------------------------------	------------------------------------	---	--

Saves distribution goalkeepers

16 Z. Horváth 5/6 1/3 1/3 1/2	18 D. Szilágyi 1/5 1/2 3/3 0/2 0/2	85 G. Majoros 0/1 0/1 0/1	TOTAL 6/11 1/3 2/7 2/4 3/3 0/3 1/5 0/8
--	--	---	---

Shots by position



7m penalties 3/5
Fastbreak 4/4
Breakthrough 10/16
Long dist. 1/1

7m penalties 2/2
Fastbreak 1/2
Breakthrough 7/11
Long dist. 0/0

Shooting statistics

Position	Goals	Sav.	Miss.	Post	Blk.	Total	%
Back (9m)	4	2	2	1	2	11	36
Line (6m)	2	3	1	0	0	6	33
Wing	3	3	1	0	0	7	43
7m penalties	3	0	0	2	0	5	60
Fastbreak	4	0	0	0	0	4	100
Breakthrough	10	4	2	0	0	16	63
Total	26	12	6	3	2	49	53

Jersey number Tot. Total shooting 6m 6m (line) shooting 9m 9m shooting Wng Wing shooting FB Fastbreak sh. 7m 7m penalty sh.
Brk. Breakthrough sh. LD Long distance sh. As. Assists PC Pass clear chance E7 Earned 7m pen. TF Technical faults St. Steals
2m 2m punishments C7. Committed 7m E2 Earned 2m pun. YC. Yellow cards R/B Red/Blue cards Blk. Blocks S Starting Line-up

Handball statistics and livescore by Toma-soft ltd (www.toma-soft.hr)



25th IHF Women's Junior World Championship 2026



Main Round - Group IV, 2. round

Match Team Statistics
Match No. 80

Hungary 27 - 30 Norway
(15 - 14) (12 - 16)

30.6.2026. 18:30
Attendance: 490
Jinzhong University
Gymnasium

Referees: Bruna Correa (BRA) / Renata Correa (BRA)

Norway

#	Surname and name	S	Goals / shots									Attack				Def.			Penalties			TP		
			Tot.	%	9m	6m	Wing	7m	FB	Brk.	LD	As.	PC	E7	E2	TF	St.	C7	Blk	YC	2m		R	B
2	AALSTAD Ada	S	12/16	75	5/7		1/1	2/2			4/6		1								1			42:11
4	HAGENES Maia Matre														1								18:43	
6	BREEN Milla Haugerstuen	S	2/2	100		1/1	1/1					2	1				3	2					57:48	
8	REFSLAND Vilde																							
9	BARBOSA Sara Benedicte Fredheim		2/4	50	1/2	1/1				0/1		2			3								12:10	
10	WITH Synne	S	5/6	83			4/5		1/1						1	2	1						58:24	
12	LANGAARD Leah Isabell	S																					54:35	
13	LEINAN Maja	S	1/1	100		1/1									1					2			34:06	
17	LITLAND Edle Eik		1/3	33	0/1					1/2		1		1	1	1							16:53	
21	GULBRANDSEN Vanessa Braten																							
24	ELLINGSEN Julie		1/7	14	0/5			0/1	1/1			1		1	2								35:46	
27	HALLDORSSON Mali	S	3/7	43	3/7							2			1		1						33:19	
28	HELLEBUST Hennie Nygard																							
29	LOFSTEDT Thea Ellen		2/4	50	1/3				1/1						1		1						18:23	
35	LANGSETH Thilla Karoline Molle	S	1/1	100		1/1						1					1		2				35:07	
36	GULLIKSEN Maja Linnea																						2:35	
	Team / bench																							
	TOTAL		30/51	59	10/25	4/4	6/7	2/2	1/2	7/11	0/0	10	1	2	1	11	6	5	2	0	3	0	0	

#	Surname and name	Saves / shots								
		Tot.	%	9m	6m	Wing	7m	FB	Brk.	LD
12	LANGAARD Leah Isabell	12/36	33	2/6	3/5	3/6	0/1	0/4	4/14	
28	HELLEBUST Hennie Nygard									
36	GULLIKSEN Maja Linnea	0/2	0				0/2			
	TOTAL	12/38	32	2/6	3/5	3/6	0/3	1/4	4/14	0/0

Coach: Axel Stefansson

Number of attacks: 59, Efficiency: 51%, Average Duration: 30.02 seconds

Attack by type of defense

	Shots	9m	6m	Wing	TF	E7	E2
On def. 6-0	24/44	10/25	2/2	5/6	8	2	1
On def. press.	3/3	0/0	2/2	1/1	3	0	0
Fastbreak	1/2				0	0	0

Defense by type

	Total	9m	6m	Wing	Stl.	C7	2m
Def. 6-0	19/40	4/11	2/6	3/7	6	5	0
Fastbreak	4/4				0	0	3

Attack with superiority / minority / goalkeeper out

	Attack				Reaction		
	Att.	Eff.	Shots	TF	FB	LD	Tot.
7 on 6 (GK out)	1	100%	1/1	0	0/0	0/0	0/0
6 on 6 (GK out)	5	20%	1/4	1	0/0	1/1	1/1
6 on 6	48	52%	25/39	9			
5 on 6	1	0%	0/1	0			
6 on 5	4	75%	3/3	1			

Player superiority / GK out counted at the end of attack (in case it changes during attack)

Defense with superiority / minority / goalkeeper out

	Attack				Reaction		
	Att.	Eff.	Shots	TF	FB	LD	Tot.
7 on 6 (GK out)	3	33%	1/3	0	0/0	0/0	0/0
6 on 6 (GK out)	2	0%	0/1	1	0/0	0/0	0/0
6 on 6	47	47%	22/40	7			
6 on 5	7	57%	4/4	3			

Numbers show attacking numbers of opponent. Lower efficiency of opponent means better defense of this team

Jersey number Tot. Total shooting 6m 6m (line) shooting 9m 9m shooting Wng Wing shooting FB Fastbreak sh. 7m 7m penalty sh.
Brk. Breakthrough sh. LD Long distance sh. As. Assists PC Pass clear chance E7 Earned 7m pen. TF Technical faults St. Steals
2m 2m punishments C7. Committed 7m E2 Earned 2m pun. YC. Yellow cards R/B Red/Blue cards Blk. Blocks S Starting Line-up

Handball statistics and livescore by Toma-soft ltd (www.toma-soft.hr)



25th IHF Women's Junior World Championship 2026



Main Round - Group IV, 2. round

Match Team Statistics

Match No. 80

Hungary 27 - 30 Norway

(15 - 14) (12 - 16)

30.6.2026. 18:30

Attendance: 490

Jinzhong University

Gymnasium

Referees: Bruna Correa (BRA) / Renata Correa (BRA)

Shot distribution by player

2 A. Aalstad

3/5	1/1	3/3
1/2		
1/1		3/3

1 post

4 M. Hagenes

6 M. Breen

		2/2

8 V. Refsland

9 S. Barbosa

1/2		
0/1		1/1

10 S. With

0/1	1/1	
		1/1
1/1		1/1

1/1 lob

13 M. Leinan

		1/1

17 E. Litland

	0/2	
1/1		

21 V. Gulbrandsen

24 J. Ellingsen

0/2	0/1	
1/2		

2 miss.

27 M. Halldorsson

		2/3
		1/1

1 miss. 2 block

29 T. Löfstedt

1/1		0/1
	0/1	
1/1		

35 T. Langseth

		1/1

TOTAL

5/11	2/3	5/7
2/4	0/3	3/3
4/5		8/8

1 post 3 miss. 2 block 1/1 lob

Saves distribution goalkeepers

12 L. Langaard

1/3	1/1	1/5
0/2	1/2	2/2
3/7	2/3	1/10

28 H. Hellebust

36 M. Gulliksen

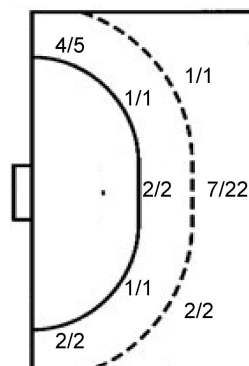
0/2		

TOTAL

1/3	1/1	1/5
0/2	1/2	2/2
3/9	2/3	1/10

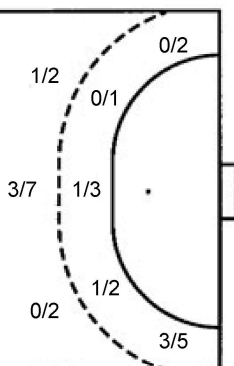
Shots by position

ATTACK



7m penalties	2/2
Fastbreak	1/2
Breakthrough	7/11
Long dist.	0/0

DEFENSE



7m penalties	3/5
Fastbreak	4/4
Breakthrough	10/16
Long dist.	1/1

Shooting statistics

Position	Goals	Sav.	Miss.	Post	Blk.	Total	%
Back (9m)	10	10	3	0	2	25	40
Line (6m)	4	0	0	0	0	4	100
Wing	6	1	0	0	0	7	86
7m penalties	2	0	0	0	0	2	100
Fastbreak	1	1	0	0	0	2	50
Breakthrough	7	3	0	1	0	11	64
Total	30	15	3	1	2	51	59

Jersey number Tot. Total shooting 6m 6m (line) shooting 9m 9m shooting Wng Wing shooting FB Fastbreak sh. 7m 7m penalty sh.
 Brk. Breakthrough sh. LD Long distance sh. As. Assists PC Pass clear chance E7 Earned 7m pen. TF Technical faults St. Steals
 2m 2m punishments C7. Committed 7m E2 Earned 2m pun. YC. Yellow cards R/B Red/Blue cards Blk. Blocks S Starting Line-up

Handball statistics and livescore by Toma-soft ltd (www.toma-soft.hr)

