



25th IHF Women's Junior World Championship 2026



Main Round - Group III, 2. round

Match Team Statistics
Match No. 76

P.R. of China 29 - 36 Czechia
(10 - 17) (19 - 19)

30.6.2026. 18:30
Attendance: 4100
Jinzhong City Gymnasium

Referees: Moustafa Abdelkarim (EGY) / Ahmed Shawky Kedis (EGY)

P.R. of China

Players		Goals / shots									Attack					Def.			Penalties				TP		
#	Surname and name	S	Tot.	%	9m	6m	Wing	7m	FB	Brk.	LD	As.	PC	E7	E2	TF	St.	C7	Bik	YC	2m	R	B		
1	SUN Yihan	S																							47:29
3	PAN Fengying	S	10/15	67	0/4	2/2		6/6		2/3		3	1	3	1	6	1	1							53:11
5	ZHANG Jingwen												1	1											2:14
6	FU Yujie		1/3	33			1/3																		18:46
8	LIANG Jing	S	2/10	20	1/6	1/1				0/3		5	1			1	1								48:13
9	ZHANG Shuoyan		4/4	100						4/4		2	1	2	1	6		1					1		34:22
10	HU Jiaxin		0/1	0		0/1										1									3:34
15	YANG Yue	S	4/4	100		4/4									1	1	1		2				2		39:03
16	HUANG Sitong																								4:09
23	ZHENG Yun	S	0/1	0		0/1						2	2				1		2				2		39:54
24	ZHU Yifan																								1:58
26	LIU Yutong																								
37	CHEN Xinyu		3/4	75		3/4										2	1								29:09
39	SHA Yiyao	S	1/2	50			1/2																		29:54
55	LIU Yixuan		1/1	100		1/1																			28:26
56	CHENG Yahan	S	3/5	60			2/3	0/1			1/1														39:38
	Team / bench																								
	TOTAL		29/50	58	1/10	11/14	4/8	6/7	0/0	6/10	1/1	12	6	7	3	18	3	6	0	1	5	0	0		

Goalkeepers		Saves / shots								
#	Surname and name	Tot.	%	9m	6m	Wing	7m	FB	Brk.	LD
1	SUN Yihan	10/39	26		2/11	1/9	1/5		5/13	1/1
16	HUANG Sitong	0/4	0		0/1	0/1		0/1	0/1	
	TOTAL	10/43	23	0/0	2/12	1/10	1/5	0/1	5/14	1/1

Coach: Zsadányi Sándor

Number of attacks: 64, Efficiency: 45%, Average Duration: 32.30 seconds

Attack by type of defense

	Shots	9m	6m	Wing	TF	E7	E2
On def. 6-0	21/40	1/10	10/12	4/8	18	7	3
Fastbreak	0/0				0	0	0

Defense by type

	Total	9m	6m	Wing	Stl.	C7	2m
Def. 6-0	14/22	0/0	1/3	6/8	2	4	0
Def. 5-1	9/16	0/1	4/5	3/3	1	2	0
Fastbreak	1/1				0	0	5

Attack with superiority / minority / goalkeeper out

	Attack				Reaction		
	Att.	Eff.	Shots	TF	FB	LD	Tot.
7 on 6 (GK out)	8	25%	2/6	2	1/1	1/2	2/3
6 on 6 (GK out)	7	43%	3/5	2	0/0	2/2	2/2
6 on 6	38	47%	18/27	11			
6 on 5	9	56%	5/6	3			
6 on 4	1	100%	1/1	0			
5 on 6	1	0%	0/1	0			

Player superiority / GK out counted at the end of attack (in case it changes during attack)

Defense with superiority / minority / goalkeeper out

	Attack				Reaction		
	Att.	Eff.	Shots	TF	FB	LD	Tot.
7 on 6 (GK out)	1	0%	0/1	0	0/0	0/0	0/0
6 on 6 (GK out)	6	50%	3/4	2	0/0	1/1	1/1
5 on 6 (GK out)	1	100%	1/1	0	0/0	0/0	0/0
6 on 6	44	55%	24/36	8			
6 on 5	12	67%	8/10	2			

Numbers show attacking numbers of opponent. Lower efficiency of opponent means better defense of this team

Jersey number Tot. Total shooting 6m 6m (line) shooting 9m 9m shooting Wng Wing shooting FB Fastbreak sh. 7m 7m penalty sh.
Brk. Breakthrough sh. LD Long distance sh. As. Assists PC Pass clear chance E7 Earned 7m pen. TF Technical faults St. Steals
2m 2m punishments C7. Committed 7m E2 Earned 2m pun. YC. Yellow cards R/B Red/Blue cards Blk. Blocks S Starting Line-up



25th IHF Women's Junior World Championship 2026



Main Round - Group III, 2. round

Match Team Statistics
Match No. 76

P.R. of China 29 - 36 Czechia
(10 - 17) (19 - 19)

30.6.2026. 18:30
Attendance: 4100
Jinzhong City Gymnasium

Referees: Moustafa Abdelkarim (EGY) / Ahmed Shawky Kedis (EGY)

Shot distribution by player

3 F. Pan	5 J. Zhang	6 Y. Fu	8 J. Liang	9 S. Zhang	10 J. Hu	15 Y. Yang
0/1 3/3 2/2 2/3 2/3 1 post 1 block 1/1 lob		0/1 1/1 1 miss.	0/2 1/1 0/2 0/1 1/1 1/2 1 miss. 1 block	1/1 1/1 1/1	0/1	1/1 1/1 2/2
23 Y. Zheng	24 Y. Zhu	26 Y. Liu	37 X. Chen	39 Y. Sha	55 Y. Liu	56 Y. Cheng
0/1			1/1 0/1 1/1 1/1	0/1 1/1	1/1	0/1 1/1 2/2

TOTAL

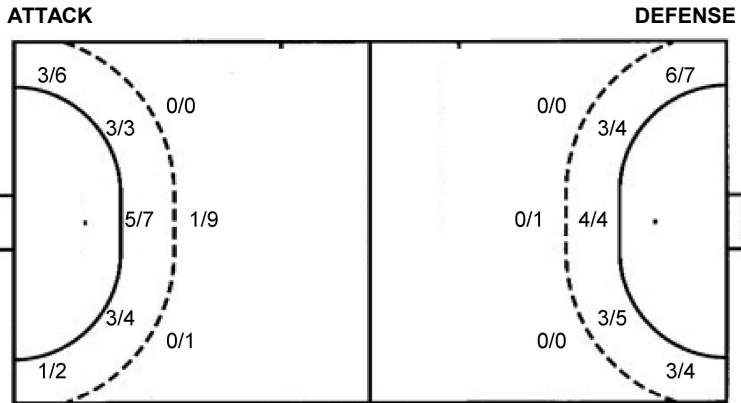
2/4	0/1	1/1
0/3	1/5	5/6
7/9	4/6	8/9

1 post 2 miss. 2 block 1/1 lob

Saves distribution goalkeepers

1 Y. Sun	16 S. Huang	TOTAL
0/3 0/2 1/4 5/5 1/2 1/9 1/5 1/7	0/1 0/1	0/4 0/3 1/4 5/5 1/2 1/10 1/6 1/7

Shots by position



7m penalties	6/7	7m penalties	4/6
Fastbreak	0/0	Fastbreak	1/1
Breakthrough	6/10	Breakthrough	9/18
Long dist.	1/1	Long dist.	3/4

Shooting statistics

Position	Goals	Sav.	Miss.	Post	Blk.	Total	%
Back (9m)	1	6	0	1	2	10	10
Line (6m)	11	3	0	0	0	14	79
Wing	4	3	1	0	0	8	50
7m penalties	6	1	0	0	0	7	86
Fastbreak	0	0	0	0	0	0	0
Breakthrough	6	3	1	0	0	10	60
Total	28	16	2	1	2	49	57

Jersey number Tot. Total shooting 6m 6m (line) shooting 9m 9m shooting Wng Wing shooting FB Fastbreak sh. 7m 7m penalty sh.
 Brk. Breakthrough sh. LD Long distance sh. As. Assists PC Pass clear chance E7 Earned 7m pen. TF Technical faults St. Steals
 2m 2m punishments C7. Committed 7m E2 Earned 2m pun. YC. Yellow cards R/B Red/Blue cards Blk. Blocks S Starting Line-up



25th IHF Women's Junior World Championship 2026



Main Round - Group III, 2. round

Match Team Statistics

Match No. 76

P.R. of China 29 - 36 Czechia

(10 - 17) (19 - 19)

30.6.2026. 18:30

Attendance: 4100

Jinzhong City Gymnasium

Referees: Moustafa Abdelkarim (EGY) / Ahmed Shawky Kedis (EGY)

Shot distribution by player

2 M. Krapková

		1/1
	0/1	
1/1	2/2	1/1

2/2 lob

5 C. Rampová

6 T. Pazderová

1/1		
	0/1	

1 post

7 V. Vrbková

	2/2	2/2
		1/1
1/1	1/1	

9 A. Chaloupková

2/2		
		1/1

1 post

10 R. Matějková

1/1		1/1

1 miss.

11 M. Holeňáková

	0/1	
3/3	1/1	1/1

1 miss.

13 V. Pejšová

	1/1	

1 post

19 T. Pospíšilová

1 post

20 N. Baborovská

1/1		
0/1	0/1	
1/1		1/1

21 M. Polanková

1/1		
1/1		

22 T. Filipková

1/1		
	0/1	0/1
0/1		1/2

1 post 1 miss.

25 V. Knedlová

1/1		
1/1		

26 A. Chodounská

TOTAL

4/4	2/2	3/3
3/4	0/4	1/2
9/10	5/6	6/7

5 post 3 miss. 2/2 lob

Saves distribution goalkeepers

12 A. Chvátalová

2/4	1/1	0/1
3/3	4/5	1/4
2/9	2/5	1/9

27 A. Buchtová

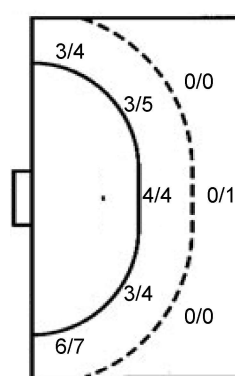
		0/2

TOTAL

2/4	1/1	0/1
3/3	4/5	1/6
2/9	2/5	1/9

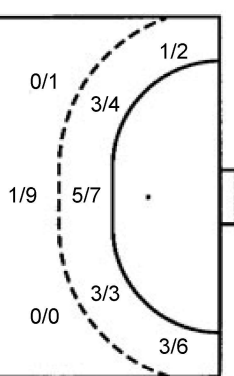
Shots by position

ATTACK



7m penalties 4/6
Fastbreak 1/1
Breakthrough 9/18
Long dist. 3/4

DEFENSE



7m penalties 6/7
Fastbreak 0/0
Breakthrough 6/10
Long dist. 1/1

Shooting statistics

Position	Goals	Sav.	Miss.	Post	Blk.	Total	%
Back (9m)	0	0	0	1	0	1	0
Line (6m)	10	2	0	1	0	13	77
Wing	9	1	0	1	0	11	82
7m penalties	4	1	0	1	0	6	67
Fastbreak	1	0	0	0	0	1	100
Breakthrough	9	5	3	1	0	18	50
Total	33	9	3	5	0	50	66

Jersey number Tot. Total shooting 6m 6m (line) shooting 9m 9m shooting Wng Wing shooting FB Fastbreak sh. 7m 7m penalty sh.
Brk. Breakthrough sh. LD Long distance sh. As. Assists PC Pass clear chance E7 Earned 7m pen. TF Technical faults St. Steals
2m 2m punishments C7. Committed 7m E2 Earned 2m pun. YC. Yellow cards R/B Red/Blue cards Blk. Blocks S Starting Line-up

Handball statistics and livescore by Toma-soft ltd (www.toma-soft.hr)

