



25th IHF Women's Junior World Championship 2026



Main Round - Group III, 2. round

Match Team Statistics
Match No. 75

Denmark 32 - 32 Montenegro
(16 - 16) (16 - 16)

30.6.2026. 16:15
Attendance: 1250
Jinzhong City Gymnasium

Referees: Andrea Pepe (ITA) / Simona Stancu (ROU)

Denmark

#	Surname and name	S	Goals / shots								Attack				Def.			Penalties				TP		
			Tot.	%	9m	6m	Wing	7m	FB	Brk.	LD	As.	PC	E7	E2	TF	St.	C7	Blk	YC	2m		R	B
2	ANTIVAKIS Cecilie Wiking		3/5	60			2/4			1/1														56:01
3	ANDERSEN Johanne Lasthein	S	1/2	50			1/2																	17:06
5	ULRICHSEN Tilde Nygaard																							22:23
6	SIBANDA Emilia Arroe	S	1/1	100		1/1								1										16:14
7	HOPPE Kirstine Emilie		5/9	56	1/4				2/2	2/3				3		3	1	2	1					37:40
10	JENSEN Isabella		6/6	100	4/4					2/2				1				1	1					33:40
12	KOERTH Maria Liv Dahl																							26:21
14	LÜTZHOFT Lina Thorstein	S	1/1	100		1/1								1				2				1		29:42
15	PERSSON Julie Groth	S	5/6	83	3/3					2/3				2	1		2		2		1			50:26
16	NIELSEN Freja Fonseca	S												2										31:45
17	MARTENS Laura Duevang		2/2	100		2/2												1						21:37
18	RASMUSSEN Emma Hoirup																							
20	SOLLING FAGER Freja																							
22	JOHANSEN Julie Boendorf	S	2/7	29			2/7																	43:05
24	NORSKOV Cecilie Frydendahl	S	6/8	75	3/4				2/3					2	1		1	3	1					31:15
29	BODKER Emilie Lolk																							2:45
Team / bench																								
TOTAL			32/47	68	11/15	4/4	5/13	2/3	3/3	6/8	1/1	12	3	3	4	14	5	2	1	1	2	0	0	

#	Surname and name	Saves / shots								
		Tot.	%	9m	6m	Wing	7m	FB	Brk.	LD
12	KOERTH Maria Liv Dahl	4/17	24	2/6	1/5	1/3	0/1		0/2	
16	NIELSEN Freja Fonseca	6/24	25	3/7	0/2	3/7			0/8	
20	SOLLING FAGER Freja									
TOTAL		10/41	24	5/13	1/7	4/10	0/1	0/0	0/10	0/0

Coach: Ole Lund Bitsch

Number of attacks: 60, Efficiency: 53%, Average Duration: 29.67 seconds

Attack by type of defense

	Shots	9m	6m	Wing	TF	E7	E2
On def. 6-0	22/35	9/13	4/4	5/12	13	3	3
On def. 5-1	4/5	2/2	0/0	0/1	1	0	1
Fastbreak	3/3				0	0	0

Defense by type

	Total	9m	6m	Wing	Stl.	C7	2m
Def. 6-0	30/45	8/17	6/7	6/11	5	2	0
Fastbreak	0/0				0	0	2

Attack with superiority / minority / goalkeeper out

	Attack				Reaction		
	Att.	Eff.	Shots	TF	FB	LD	Tot.
7 on 6 (GK out)	4	25%	1/2	2	0/0	0/0	0/0
7 on 5 (GK out)	1	100%	1/1	0	0/0	0/0	0/0
6 on 6 (GK out)	3	33%	1/1	2	0/0	1/1	1/1
6 on 6	40	58%	23/32	8			
6 on 5	12	50%	6/10	2			

Player superiority / GK out counted at the end of attack (in case it changes during attack)

Defense with superiority / minority / goalkeeper out

	Attack				Reaction		
	Att.	Eff.	Shots	TF	FB	LD	Tot.
7 on 6 (GK out)	20	55%	11/17	3	1/1	0/0	1/1
6 on 6 (GK out)	9	44%	4/7	2	1/1	1/1	2/2
6 on 6	28	54%	15/20	8			
7 on 5 (GK out)	1	0%	0/1	0	0/0	0/0	0/0
6 on 5	2	100%	2/2	0			

Numbers show attacking numbers of opponent. Lower efficiency of opponent means better defense of this team

Jersey number Tot. Total shooting 6m 6m (line) shooting 9m 9m shooting Wng Wing shooting FB Fastbreak sh. 7m 7m penalty sh.
Brk. Breakthrough sh. LD Long distance sh. As. Assists PC Pass clear chance E7 Earned 7m pen. TF Technical faults St. Steals
2m 2m punishments C7. Committed 7m E2 Earned 2m pun. YC. Yellow cards R/B Red/Blue cards Blk. Blocks S Starting Line-up



25th IHF Women's Junior World Championship 2026



Main Round - Group III, 2. round

Match Team Statistics

Match No. 75

Denmark 32 - 32 Montenegro

(16 - 16) (16 - 16)

30.6.2026. 16:15

Attendance: 1250

Jinzhong City Gymnasium

Referees: Andrea Pepe (ITA) / Simona Stancu (ROU)

Shot distribution by player

2 C. Antivakis

1/1		
1/1		1/1

2 miss.

3 J. Andersen

		0/1
		1/1

5 T. Ulrichsen

6 E. Sibanda

1/1		

7 K. Hoppe

1/1	0/1	
0/1		
2/2	2/2	0/1

1 post

10 I. Jensen

		1/1
3/3		2/2

14 L. Lützhof

		1/1

15 J. Persson

1/1		1/1
1/1	1/2	1/1

17 L. Martens

1/1		1/1

18 E. Rasmussen

22 J. Johansen

		1/1
0/1	1/2	

1 post 2 miss.

24 C. Norskov

	1/1	2/2
		1/1
	1/1	1/1

1 post 1 miss.

29 E. Bodker

TOTAL

3/3	1/2	4/5
1/2		3/3
8/9	5/7	7/8

3 post 5 miss.

Saves distribution goalkeepers

12 M. Koerth

	0/1	1/3
1/2	1/1	0/1
0/4	1/4	0/1

16 F. Nielsen

0/4	1/1	0/3
0/1		1/3
0/3	3/3	1/6

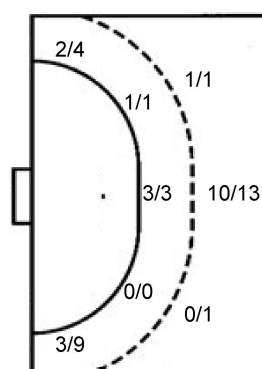
20 F. Solling Fager

TOTAL

0/4	1/2	1/6
1/3	1/1	1/4
0/7	4/7	1/7

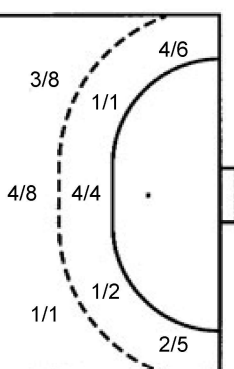
Shots by position

ATTACK



7m penalties 2/3
Fastbreak 3/3
Breakthrough 6/8
Long dist. 1/1

DEFENSE



7m penalties 1/2
Fastbreak 0/0
Breakthrough 10/10
Long dist. 1/1

Shooting statistics

Position	Goals	Sav.	Miss.	Post	Blk.	Total	%
Back (9m)	11	2	1	1	0	15	73
Line (6m)	4	0	0	0	0	4	100
Wing	5	3	4	1	0	13	38
7m penalties	2	0	0	1	0	3	67
Fastbreak	3	0	0	0	0	3	100
Breakthrough	6	2	0	0	0	8	75
Total	31	7	5	3	0	46	67

Jersey number Tot. Total shooting 6m 6m (line) shooting 9m 9m shooting Wng Wing shooting FB Fastbreak sh. 7m 7m penalty sh.
Brk. Breakthrough sh. LD Long distance sh. As. Assists PC Pass clear chance E7 Earned 7m pen. TF Technical faults St. Steals
2m 2m punishments C7. Committed 7m E2 Earned 2m pun. YC. Yellow cards R/B Red/Blue cards Blk. Blocks S Starting Line-up

Handball statistics and livescore by Toma-soft ltd (www.toma-soft.hr)



25th IHF Women's Junior World Championship 2026



Main Round - Group III, 2. round

Match Team Statistics
Match No. 75

Denmark 32 - 32 Montenegro
(16 - 16) (16 - 16)

30.6.2026. 16:15
Attendance: 1250
Jinzhang City Gymnasium

Referees: Andrea Pepe (ITA) / Simona Stancu (ROU)

Montenegro

Players		Goals / shots									Attack					Def.			Penalties			TP				
#	Surname and name	S	Tot.	%	9m	6m	Wing	7m	FB	Brk.	LD	As.	PC	E7	E2	TF	St.	C7	Bik	YC	2m	R	B			
1	RONCEVIC Teodora	S																							28:49	
2	ANDRIJASEVIC Sanja																									
7	LEKIC Natalija		2/2	100	1/1					1/1		1	1			2						1			12:57	
8	KUZMAN Ksenija																									
9	CEKLIC Maja																									
10	PELICIC Bojana	S	6/9	67		1/1	4/6	1/2				1				1									57:08	
11	GUBERINIC Andela	S	4/4	100		3/3					1/1			1	1	1		1				1			60:00	
13	RAMUSOVIC Nina	S	4/7	57	0/2	0/1				4/4		3		1		4	1	1							60:00	
14	JOVANOVIC Anika	S	1/3	33			1/3									1							1		38:21	
16	ZIVKOVIC Vanja																								19:54	
17	MITROVIC Elena																									
20	GASEVIC Ksenija																									
23	SAVIC Ivana	S	7/12	58	6/11					1/1		3				3							1		60:00	
24	GRUJIC Mia		1/2	50			1/2																		22:47	
26	KNEZEVIC Martina	S	7/9	78	1/3	2/2				4/4		4	2		1	1	1	1					2		59:01	
27	ORBOVIC Anelina																									
Team / bench																										
TOTAL			32/48	67	8/17	6/7	6/11	1/2	0/0	10/10	1/1	12	3	2	2	13	2	3	0	1	5	0	0			

Goalkeepers		Saves / shots								
#	Surname and name	Tot.	%	9m	6m	Wing	7m	FB	Brk.	LD
1	RONCEVIC Teodora	5/22	23	2/9	0/2	2/4	0/2	0/1	1/4	
16	ZIVKOVIC Vanja	2/14	14	0/4	0/2	1/4			1/4	
TOTAL		7/36	19	2/13	0/4	3/8	0/2	0/1	2/8	0/0

Coach: Igor Marković

Number of attacks: 60, Efficiency: 53%, Average Duration: 30.33 seconds

Attack by type of defense

	Shots	9m	6m	Wing	TF	E7	E2
On def. 6-0	30/45	8/17	6/7	6/11	13	2	2
Fastbreak	0/0				0	0	0

Defense by type

	Total	9m	6m	Wing	Stl.	C7	2m
Def. 6-0	22/35	9/13	4/4	5/12	2	3	0
Def. 5-1	4/5	2/2	0/0	0/1	0	0	0
Fastbreak	3/3				0	0	5

Attack with superiority / minority / goalkeeper out

	Attack				Reaction		
	Att.	Eff.	Shots	TF	FB	LD	Tot.
7 on 6 (GK out)	20	55%	11/17	3	1/1	0/0	1/1
6 on 6 (GK out)	9	44%	4/7	2	1/1	1/1	2/2
6 on 6	28	54%	15/20	8			
7 on 5 (GK out)	1	0%	0/1	0	0/0	0/0	0/0
6 on 5	2	100%	2/2	0			

Player superiority / GK out counted at the end of attack (in case it changes during attack)

Defense with superiority / minority / goalkeeper out

	Attack				Reaction		
	Att.	Eff.	Shots	TF	FB	LD	Tot.
7 on 6 (GK out)	4	25%	1/2	2	0/0	0/0	0/0
7 on 5 (GK out)	1	100%	1/1	0	0/0	0/0	0/0
6 on 6 (GK out)	3	33%	1/1	2	0/0	1/1	1/1
6 on 6	40	58%	23/32	8			
6 on 5	12	50%	6/10	2			

Numbers show attacking numbers of opponent. Lower efficiency of opponent means better defense of this team

Jersey number Tot. Total shooting 6m 6m (line) shooting 9m 9m shooting Wng Wing shooting FB Fastbreak sh. 7m 7m penalty sh.
Brk. Breakthrough sh. LD Long distance sh. As. Assists PC Pass clear chance E7 Earned 7m pen. TF Technical faults St. Steals
2m 2m punishments C7. Committed 7m E2 Earned 2m pun. YC. Yellow cards R/B Red/Blue cards Blk. Blocks S Starting Line-up



25th IHF Women's Junior World Championship 2026



Main Round - Group III, 2. round

Match Team Statistics

Match No. 75

Denmark 32 - 32 Montenegro

(16 - 16) (16 - 16)

30.6.2026. 16:15

Attendance: 1250

Jinzhong City Gymnasium

Referees: Andrea Pepe (ITA) / Simona Stancu (ROU)

Shot distribution by player

2 S. Andrijasević

7 N. Lekić

	1/1	
	1/1	

8 K. Kuzman

9 M. Ceklic

10 B. Pelicić

		1/1
1/2		1/1
3/3	0/1	

1 post

11 A. Guberinić

1/1	2/2	1/1

13 N. Ramusović

1/1		0/1
		1/1
	0/2	2/2

14 A. Jovanović

		1/1
		0/1

1 miss.

17 E. Mitrović

20 K. Gasević

23 I. Savić

1/1	0/1	1/1
	0/1	0/1
3/3	1/1	1/1

1 post 1 block

24 M. Grujic

1/1		
	0/1	

26 M. Knežević

1/1		2/2
1/1		1/1
		2/2

2 miss.

27 A. Orbović

TOTAL

4/4	1/2	5/6
2/3	0/1	3/4
7/7	4/8	6/7

2 post 3 miss. 1 block

Saves distribution goalkeepers

1 T. Roncević

0/2	1/2	0/3
0/1		0/2
1/4	2/2	1/6

16 V. Zivković

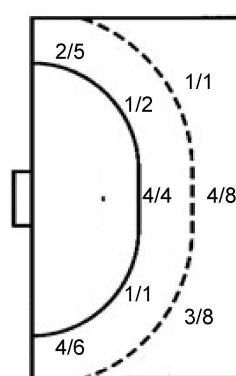
0/1		1/2
1/1		0/1
0/5	0/2	0/2

TOTAL

0/3	1/2	1/5
1/2		0/3
1/9	2/4	1/8

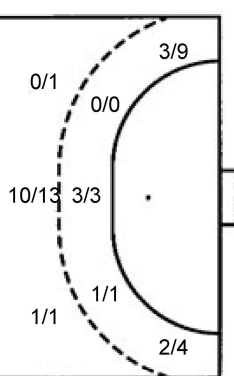
Shots by position

ATTACK



7m penalties 1/2
Fastbreak 0/0
Breakthrough 10/10
Long dist. 1/1

DEFENSE



7m penalties 2/3
Fastbreak 3/3
Breakthrough 6/8
Long dist. 1/1

Shooting statistics

Position	Goals	Sav.	Miss.	Post	Blk.	Total	%
Back (9m)	8	5	2	1	1	17	47
Line (6m)	6	1	0	0	0	7	86
Wing	6	4	1	0	0	11	55
7m penalties	1	0	0	1	0	2	50
Fastbreak	0	0	0	0	0	0	0
Breakthrough	10	0	0	0	0	10	100
Total	31	10	3	2	1	47	66

Jersey number Tot. Total shooting 6m 6m (line) shooting 9m 9m shooting Wng Wing shooting FB Fastbreak sh. 7m 7m penalty sh.
Brk. Breakthrough sh. LD Long distance sh. As. Assists PC Pass clear chance E7 Earned 7m pen. TF Technical faults St. Steals
2m 2m punishments C7. Committed 7m E2 Earned 2m pun. YC. Yellow cards R/B Red/Blue cards Blk. Blocks S Starting Line-up

Handball statistics and livescore by Toma-soft ltd (www.toma-soft.hr)

