



25th IHF Women's Junior World Championship 2026



President's Cup - Group III, 2. round

Match Team Statistics

Match No. 73

Algeria 23 - 33 Iceland

(10 - 17) (13 - 16)

30.6.2026. 11:45

Attendance: 400

Jinzhang City Gymnasium

Referees: Ante Mikelic (CRO) / Petar Paradina (CRO)

Algeria

#	Surname and name	S	Goals / shots								Attack					Def.			Penalties				TP					
			Tot.	%	9m	6m	Wing	7m	FB	Brk.	LD	As.	PC	E7	E2	TF	St.	C7	Blk	YC	2m	R		B				
1	BOUSSEDER Zineb																											0:11
2	BOUALEM Mattilda Aya		0/1	0		0/1																						10:51
5	YELLES Racha	S	6/10	60	4/6	0/1																						44:17
15	HAMMIDECHE Maroua		2/6	33	1/5																							37:55
18	TAIR Thalya		2/3	67																								33:51
19	SAHLI Amel	S	0/1	0	0/1																							25:24
22	DJERMOULI Louiza																											49:21
24	ZEDIRI Meissa	S	2/2	100	1/1																							37:46
27	BERKANI Lylia		0/3	0	0/1	0/1																						22:03
28	AYA Amri		2/3	67																								18:20
29	OULGHADI Amel		0/1	0		0/1																						10:12
30	MESTOURI-THEODORE Timea	S	2/5	40		0/1	0/2	2/2																				40:36
31	MANSOURI Kinda		6/8	75	2/3	1/2		1/1																				16:34
69	LAKRAFED Jihane	S																										33:15
92	DJAIDER Malak	S	1/4	25	1/1			0/1																				31:25
99	KHAMTACHE Marwa Khatima	S																										7:59
	Team / bench																											
	TOTAL		23/47	49	9/18	1/6	2/7	3/4	2/2	5/9	1/1	3	4	4	5	14	3	4	0	0	4	0	0	4	0	0		

#	Surname and name	Saves / shots								
		Tot.	%	9m	6m	Wing	7m	FB	Brk.	LD
1	BOUSSEDER Zineb	0/1	0				0/1			
22	DJERMOULI Louiza	15/41	37	2/7	0/3	5/11	0/2	0/5	8/13	
99	KHAMTACHE Marwa Khatima	1/6	17	1/2		0/2	0/1	0/1		
	TOTAL	16/48	33	3/9	0/3	5/13	0/4	0/6	8/13	0/0

Coach: Ait Ouarab Mourad

Number of attacks: 60, Efficiency: 38%, Average Duration: 34.18 seconds

Attack by type of defense

	Shots	9m	6m	Wing	TF	E7	E2
On def. 6-0	17/40	9/18	1/6	2/7	14	4	5
Fastbreak	2/2				0	0	0

Defense by type

	Total	9m	6m	Wing	Stl.	C7	2m
Def. 6-0	21/43	6/12	2/2	8/15	3	4	0
Fastbreak	6/6				0	0	4

Attack with superiority / minority / goalkeeper out

	Attack				Reaction		
	Att.	Eff.	Shots	TF	FB	LD	Tot.
7 on 6 (GK out)	3	33%	1/1	2	0/0	0/0	0/0
6 on 6 (GK out)	5	60%	3/5	0	0/0	0/0	0/0
6 on 6	35	40%	14/27	8			
6 on 5	16	31%	5/12	4			
5 on 6	1	0%	0/1	0			

Player superiority / GK out counted at the end of attack (in case it changes during attack)

Defense with superiority / minority / goalkeeper out

	Attack				Reaction		
	Att.	Eff.	Shots	TF	FB	LD	Tot.
7 on 6 (GK out)	5	40%	2/5	0	0/0	0/0	0/0
6 on 6 (GK out)	11	64%	7/11	0	0/0	1/1	1/1
6 on 6	37	54%	20/29	8			
6 on 5	8	50%	4/8	0			

Numbers show attacking numbers of opponent. Lower efficiency of opponent means better defense of this team

Jersey number Tot. Total shooting 6m 6m (line) shooting 9m 9m shooting Wng Wing shooting FB Fastbreak sh. 7m 7m penalty sh.
 Brk. Breakthrough sh. LD Long distance sh. As. Assists PC Pass clear chance E7 Earned 7m pen. TF Technical faults St. Steals
 2m 2m punishments C7. Committed 7m E2 Earned 2m pun. YC. Yellow cards R/B Red/Blue cards Blk. Blocks S Starting Line-up



25th IHF Women's Junior World Championship 2026



President's Cup - Group III, 2. round

Match Team Statistics

Match No. 73

Algeria 23 - 33 Iceland

(10 - 17) (13 - 16)

30.6.2026. 11:45

Attendance: 400

Jinzhong City Gymnasium

Referees: Ante Mikelic (CRO) / Petar Paradina (CRO)

Shot distribution by player

2 M. Boualem

1 post

5 R. Yelles

0/1	0/1	2/2
2/2	1/1	1/1

2 miss.

15 M. Hammideche

		1/1
0/2		1/1

1 miss. 1 block

18 T. Tair

	0/1	
1/1	1/1	

19 A. Sahli

	0/1	

24 M. Zediri

1/1		1/1

27 L. Berkani

0/1		
0/1		

1 miss.

28 A. Aya

1/2		1/1

29 A. Oulghadi

0/1		

30 T. Mestouri-Theodore

1/1		
		1/3

0/1 lob

31 K. Mansouri

1/1		1/1
	1/1	3/3

1 miss. 1 block

69 J. Lakrafed

92 M. Djaider

	0/1	
		1/2

1 miss.

TOTAL

		1/1
2/5	0/4	3/3
5/9	3/3	9/12

1 post 6 miss. 2 block 0/1 lob

Saves distribution goalkeepers

1 Z. Boussefer

0/1		

22 L. Djermouli

1/5	1/1	0/3
4/5	2/2	4/9
1/9		2/6

99 M. Khamtache

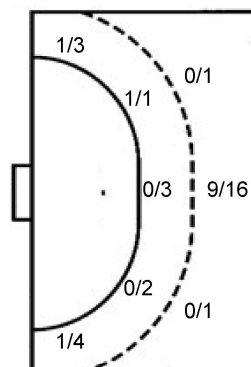
		0/1
0/2	1/1	0/2

TOTAL

1/6	1/1	0/3
4/5	2/2	4/10
1/11	1/1	2/8

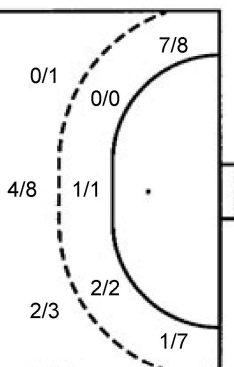
Shots by position

ATTACK



7m penalties	3/4
Fastbreak	2/2
Breakthrough	5/9
Long dist.	1/1

DEFENSE



7m penalties	4/4
Fastbreak	6/6
Breakthrough	5/14
Long dist.	1/1

Shooting statistics

Position	Goals	Sav.	Miss.	Post	Blk.	Total	%
Back (9m)	9	5	2	0	2	18	50
Line (6m)	1	2	2	1	0	6	17
Wing	2	5	0	0	0	7	29
7m penalties	3	0	1	0	0	4	75
Fastbreak	2	0	0	0	0	2	100
Breakthrough	5	3	1	0	0	9	56
Total	22	15	6	1	2	46	48

Jersey number Tot. Total shooting 6m 6m (line) shooting 9m 9m shooting Wng Wing shooting FB Fastbreak sh. 7m 7m penalty sh.
 Brk. Breakthrough sh. LD Long distance sh. As. Assists PC Pass clear chance E7 Earned 7m pen. TF Technical faults St. Steals
 2m 2m punishments C7. Committed 7m E2 Earned 2m pun. YC. Yellow cards R/B Red/Blue cards Blk. Blocks S Starting Line-up

Handball statistics and livescore by Toma-soft ltd (www.toma-soft.hr)



25th IHF Women's Junior World Championship 2026



President's Cup - Group III, 2. round

Match Team Statistics
Match No. 73

Algeria 23 - 33 Iceland
(10 - 17) (13 - 16)

30.6.2026. 11:45
Attendance: 400
Jinzhong City Gymnasium

Referees: Ante Mikelic (CRO) / Petar Paradina (CRO)

Iceland

#	Surname and name	S	Goals / shots								Attack				Def.			Penalties			TP					
			Tot.	%	9m	6m	Wing	7m	FB	Brk.	LD	As.	PC	E7	E2	TF	St.	C7	Blk	YC		2m	R	B		
4	THÓRHALLSDÓTTIR Ásthildur Jóna	S	10/11	91			6/6	1/1	3/3	0/1			4		1							1			43:35	
9	EIRIKSDÓTTIR Ama Karítas		1/4	25	0/2					1/2			2	1		1	1					1			19:06	
10	GUDMUNDSDÓTTIR Bergrós Ásta		1/1	100						1/1			2					1				1			9:25	
11	ADALSTEINSDÓTTIR Emelía Ósk	S												1		1					2		1		34:27	
12	HALLGRÍMSDÓTTIR Sif																								15:23	
13	GUDJÓNSDÓTTIR Gudmunda Audur	S	1/1	100					1/1									2				2			31:33	
14	VIKTORSÓTTIR Alexandra Ósk	S	0/3	0			0/3																		35:09	
16	ELÍASARDÓTTIR Elísabet Millý	S	1/1	100							1/1		2												38:03	
17	TRAUSTADÓTTIR Guðrún Hekla	S	7/7	100	3/3			3/3		1/1			1	1			1	1							29:01	
19	UNNARSÓTTIR Birna María		2/4	50		1/1				1/3			2		1	2	1	1							35:31	
21	HJARDAR Ásdís Halla		2/2	100		1/1			1/1								1								22:22	
22	GISLADÓTTIR Sara Rún		1/2	50			1/2																		18:13	
23	FRÓDADÓTTIR Sara Lind		2/5	40			1/4		1/1														1		20:00	
24	HAUKSDÓTTIR Inga Fanney	S	0/3	0						0/3							1		1				1		31:55	
26	PÁLSDÓTTIR Dagmar Guðrun		1/4	25	0/1					1/3			1												4:55	
35	BRAGADÓTTIR Hulda Hrönn		4/7	57	3/6	1/1							1		1	1	3								31:22	
Team / bench																										
TOTAL			33/55	60	6/12	3/3	8/15	4/4	6/6	5/14	1/1		15	2	4	4	8	3	4	2	0	7	1	0		

#	Surname and name	Saves / shots								
		Tot.	%	9m	6m	Wing	7m	FB	Brk.	LD
12	HALLGRÍMSDÓTTIR Sif	5/13	38	1/2	1/2	3/4	0/1	0/1	0/3	
16	ELÍASARDÓTTIR Elísabet Millý	10/24	42	4/12	1/1	2/3	0/2	0/1	3/5	
TOTAL		15/37	41	5/14	2/3	5/7	0/3	0/2	3/8	0/0

Coach: Halldór Stefán Haraldsson

Number of attacks: 61, Efficiency: 54%, Average Duration: 25.39 seconds

Attack by type of defense

	Shots	9m	6m	Wing	TF	E7	E2
On def. 6-0	21/43	6/12	2/2	8/15	8	4	4
Fastbreak	6/6				0	0	0

Defense by type

	Total	9m	6m	Wing	Stl.	C7	2m
Def. 6-0	17/40	9/18	1/6	2/7	3	4	0
Fastbreak	2/2				0	0	7

Attack with superiority / minority / goalkeeper out

	Attack				Reaction		
	Att.	Eff.	Shots	TF	FB	LD	Tot.
7 on 6 (GK out)	5	40%	2/5	0	0/0	0/0	0/0
6 on 6 (GK out)	11	64%	7/11	0	0/0	1/1	1/1
6 on 6	37	54%	20/29	8			
6 on 5	8	50%	4/8	0			

Player superiority / GK out counted at the end of attack (in case it changes during attack)

Defense with superiority / minority / goalkeeper out

	Attack				Reaction		
	Att.	Eff.	Shots	TF	FB	LD	Tot.
7 on 6 (GK out)	3	33%	1/1	2	0/0	0/0	0/0
6 on 6 (GK out)	5	60%	3/5	0	0/0	0/0	0/0
6 on 6	35	40%	14/27	8			
6 on 5	16	31%	5/12	4			
5 on 6	1	0%	0/1	0			

Numbers show attacking numbers of opponent. Lower efficiency of opponent means better defense of this team

Jersey number Tot. Total shooting 6m 6m (line) shooting 9m 9m shooting Wng Wing shooting FB Fastbreak sh. 7m 7m penalty sh.
Brk. Breakthrough sh. LD Long distance sh. As. Assists PC Pass clear chance E7 Earned 7m pen. TF Technical faults St. Steals
2m 2m punishments C7. Committed 7m E2 Earned 2m pun. YC. Yellow cards R/B Red/Blue cards Blk. Blocks S Starting Line-up



25th IHF Women's Junior World Championship 2026



President's Cup - Group III, 2. round

Match Team Statistics

Match No. 73

Algeria 23 - 33 Iceland

(10 - 17) (13 - 16)

30.6.2026. 11:45

Attendance: 400

Jinzhong City Gymnasium

Referees: Ante Mikelic (CRO) / Petar Paradina (CRO)

Shot distribution by player

4 Á. Thórhallsdóttir

		1/1
	0/1	3/3
3/3		2/2

1/1 lob

9 A. Eiríksdóttir

		1/1
		0/1

2 miss.

10 B. Gudmundsdóttir

1/1

11 E. Adalsteinsdóttir

13 G. Guðjónsdóttir

		1/1

14 A. Víktorsdóttir

0/2		
		0/1

17 G. Traustadóttir

1/1		
		1/1
2/2		3/3

19 B. Unnarsdóttir

0/1		
		0/1
2/2		

21 Á. Hjardar

1/1		
1/1		

22 S. Gísladóttir

		1/1

1 post

23 S. Fródadóttir

1/1	0/1	
		1/1
		0/1

1 post

24 I. Hauksdóttir

0/1	0/1	

1 miss.

26 D. Pálsdóttir

0/1		0/1
1/1	0/1	

35 H. Bragadóttir

2/2		
		1/2
1/2		

1 miss.

TOTAL

5/6	0/1	3/3
1/5	0/2	6/10
10/11	0/1	6/8

2 post 4 miss. 1/1 lob

Saves distribution goalkeepers

12 S. Hallgrímsson

1/2	1/1	0/1
3/4		0/5

16 E. Elíasardóttir

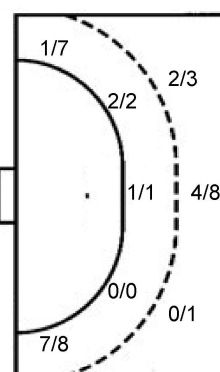
		0/1
2/3	3/3	0/2
1/5	0/2	3/7

TOTAL

		0/1
3/5	4/4	0/3
4/9	0/2	3/12

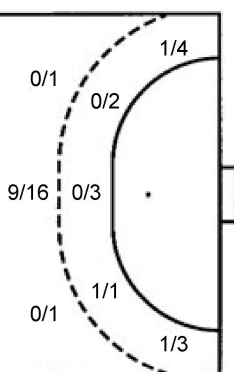
Shots by position

ATTACK



7m penalties 4/4
Fastbreak 6/6
Breakthrough 5/14
Long dist. 1/1

DEFENSE



7m penalties 3/4
Fastbreak 2/2
Breakthrough 5/9
Long dist. 1/1

Shooting statistics

Position	Goals	Sav.	Miss.	Post	Blk.	Total	%
Back (9m)	6	3	3	0	0	12	50
Line (6m)	3	0	0	0	0	3	100
Wing	8	5	0	2	0	15	53
7m penalties	4	0	0	0	0	4	100
Fastbreak	6	0	0	0	0	6	100
Breakthrough	5	8	1	0	0	14	36
Total	32	16	4	2	0	54	59

Jersey number Tot. Total shooting 6m 6m (line) shooting 9m 9m shooting Wng Wing shooting FB Fastbreak sh. 7m 7m penalty sh.
Brk. Breakthrough sh. LD Long distance sh. As. Assists PC Pass clear chance E7 Earned 7m pen. TF Technical faults St. Steals
2m 2m punishments C7. Committed 7m E2 Earned 2m pun. YC. Yellow cards R/B Red/Blue cards Blk. Blocks S Starting Line-up

Handball statistics and livescore by Toma-soft ltd (www.toma-soft.hr)

