



# 25th IHF Women's Junior World Championship 2026



Main Round - Group II, 2. round

Match Team Statistics

Match No. 71

## Germany 29 - 28 Spain

(13 - 18) (16 - 10)

30.6.2026. 16:15

Attendance: 820

Zhongdu Campus

Gymnasium

Referees: Ismailj Metalari (MKD) / Nenad Nikolovski (MKD)

### Germany

#	Surname and name	S	Goals / shots								Attack					Def.			Penalties			TP								
			Tot.	%	9m	6m	Wing	7m	FB	Brk.	LD	As.	PC	E7	E2	TF	St.	C7	Blk	YC	2m		R	B						
3	WALTHER Jana	S	3/3	100			3/3											1	1									34:15		
4	EGELING Lara		1/2	50		0/1				1/1																			14:31	
5	NJINKEU Farrelle		4/4	100			3/3			1/1					2					2	2					1			25:27	
6	MITTAG Aida		1/2	50	0/1						1/1				1				1	1									15:42	
7	ROHR Chiara	S	5/6	83		1/1		1/2	2/2	1/1				1					1	1									43:32	
8	LITVINOV Ruslana	S	3/6	50						3/6				6		1		6	1	1									44:40	
11	LAMMICH Lisa		1/4	25	1/3					0/1				1															15:15	
13	BORNHARDT Aylin		5/5	100		4/4		1/1						1					1	1									30:40	
14	KERN Marleen	S	2/7	29	1/3					1/3	0/1			2					2										41:22	
16	LINDEMANN Lena Marie	S																											14:24	
17	NIEMANN Emma		0/1	0	0/1																								3:17	
18	KLOCKE Laura	S	1/2	50						1/1		0/1				1			2	1						3			41:50	
20	TUCHOLKE Marlene	S	1/5	20	1/4					0/1								3	1	1									21:58	
21	OTT Kim		2/3	67	2/3									1					2										33:59	
28	GOLDAMMER Katharina																												0:36	
35	STEINECKE Lina																												38:32	
Team / bench																														
TOTAL			29/50	58	5/15	5/6	6/6	2/3	5/5	6/13	0/2	14	1	3	1	11	8	10	0	1	4	0	0							

#	Surname and name	Saves / shots								
		Tot.	%	9m	6m	Wing	7m	FB	Brk.	LD
16	LINDEMANN Lena Marie	0/10	0	0/1	0/2	0/1	0/2	0/1	0/3	
35	STEINECKE Lina	12/29	41	3/8	1/5	1/3	3/6		4/7	
TOTAL		12/39	31	3/9	1/7	1/4	3/8	0/1	4/10	0/0

Coach: **Christopher Nordmeyer**

Number of attacks: 57, Efficiency: 51%, Average Duration: 24.79 seconds

### Attack by type of defense

	Shots	9m	6m	Wing	TF	E7	E2
On def. 6-0	22/40	5/15	5/6	6/6	11	3	1
Fastbreak	5/5				0	0	0

### Defense by type

	Total	9m	6m	Wing	Stl.	C7	2m
Def. 6-0	21/31	6/10	6/7	3/4	8	10	0
Fastbreak	1/1				0	0	4

### Attack with superiority / minority / goalkeeper out

	Attack				Reaction		
	Att.	Eff.	Shots	TF	FB	LD	Tot.
7 on 6 (GK out)	17	47%	8/13	4	0/0	0/2	0/2
7 on 5 (GK out)	1	0%	0/1	0	0/0	0/0	0/0
6 on 6 (GK out)	6	67%	4/5	1	0/0	1/1	1/1
6 on 5 (GK out)	1	0%	0/1	0	0/0	0/0	0/0
6 on 6	32	53%	17/26	6			

Player superiority / GK out counted at the end of attack (in case it changes during attack)

### Defense with superiority / minority / goalkeeper out

	Attack				Reaction		
	Att.	Eff.	Shots	TF	FB	LD	Tot.
7 on 6 (GK out)	8	38%	3/5	3	0/0	0/1	0/1
6 on 6	42	50%	21/31	11			
7 on 5 (GK out)	2	50%	1/2	0	0/0	0/0	0/0
6 on 5 (GK out)	1	0%	0/1	0	0/0	0/0	0/0
6 on 5	4	75%	3/4	0			

Numbers show attacking numbers of opponent. Lower efficiency of opponent means better defense of this team

# Jersey number Tot. Total shooting 6m 6m (line) shooting 9m 9m shooting Wng Wing shooting FB Fastbreak sh. 7m 7m penalty sh.  
 Brk. Breakthrough sh. LD Long distance sh. As. Assists PC Pass clear chance E7 Earned 7m pen. TF Technical faults St. Steals  
 2m 2m punishments C7. Committed 7m E2 Earned 2m pun. YC. Yellow cards R/B Red/Blue cards Blk. Blocks S Starting Line-up



# 25th IHF Women's Junior World Championship 2026



Main Round - Group II, 2. round

## Match Team Statistics

Match No. 71

## Germany 29 - 28 Spain

(13 - 18) (16 - 10)

30.6.2026. 16:15

Attendance: 820

Zhongdu Campus

Gymnasium

Referees: Ismailj Metalari (MKD) / Nenad Nikolovski (MKD)

### Shot distribution by player

#### 3 J. Walther

1/1	1/1	
		1/1

#### 4 L. Egeling

1/1		

1 post

#### 5 F. Njinkeu

		1/1
1/1		
1/1	1/1	

#### 6 A. Mittag

1/1		0/1

#### 7 C. Rohr

1/1		
		1/1
1/1	1/2	1/1

#### 8 R. Litvinov

		1/1
		0/1
0/2	1/1	1/1

#### 11 L. Lammich

0/1		
1/1		0/1

1 miss.

#### 13 A. Bornhardt

2/2		
1/1		
2/2		

#### 14 M. Kern

0/1		
		1/1
1/2		

1 post 2 miss.

#### 17 E. Niemann

	0/1	

#### 18 L. Klocke

1/1	0/1	

#### 20 M. Tucholke

		0/1
0/1		1/1

1 post 1 block

#### 21 K. Ott

1/2		
		1/1

#### 28 K. Goldammer


### TOTAL

7/10	1/2	2/3
3/3		2/4
6/10	3/5	5/6

3 post 3 miss. 1 block

### Saves distribution goalkeepers

#### 16 L. Lindemann

0/1		0/3
0/2		0/1
0/1	0/1	0/1

#### 35 L. Steinecke

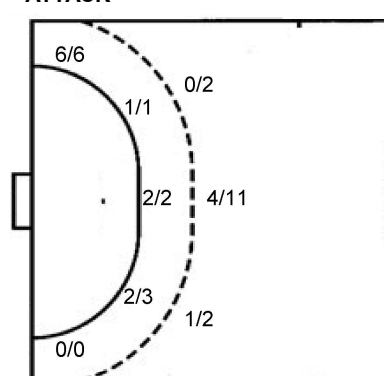
2/4	1/1	1/5
0/1		1/3
6/12	0/1	1/1

#### TOTAL

2/5	1/1	1/8
0/3		1/4
6/13	0/2	1/2

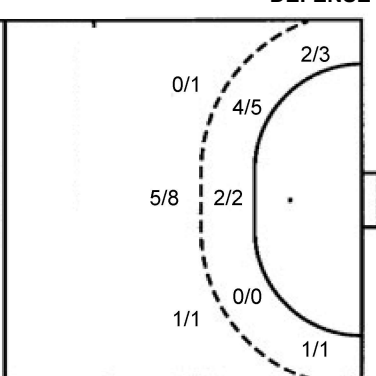
### Shots by position

#### ATTACK



7m penalties 2/3  
Fastbreak 5/5  
Breakthrough 6/13  
Long dist. 0/2

#### DEFENSE



7m penalties 5/10  
Fastbreak 1/1  
Breakthrough 6/10  
Long dist. 1/3

### Shooting statistics

Position	Goals	Sav.	Miss.	Post	Blk.	Total	%
Back (9m)	5	6	2	1	1	15	33
Line (6m)	5	0	0	1	0	6	83
Wing	6	0	0	0	0	6	100
7m penalties	2	1	0	0	0	3	67
Fastbreak	5	0	0	0	0	5	100
Breakthrough	6	6	0	1	0	13	46
<b>Total</b>	<b>29</b>	<b>13</b>	<b>2</b>	<b>3</b>	<b>1</b>	<b>48</b>	<b>60</b>

# Jersey number Tot. Total shooting 6m 6m (line) shooting 9m 9m shooting Wng Wing shooting FB Fastbreak sh. 7m 7m penalty sh.  
Brk. Breakthrough sh. LD Long distance sh. As. Assists PC Pass clear chance E7 Earned 7m pen. TF Technical faults St. Steals  
2m 2m punishments C7. Committed 7m E2 Earned 2m pun. YC. Yellow cards R/B Red/Blue cards Blk. Blocks S Starting Line-up

Handball statistics and livescore by Toma-soft ltd (www.toma-soft.hr)



# 25th IHF Women's Junior World Championship 2026



Main Round - Group II, 2. round

Match Team Statistics

Match No. 71

## Germany 29 - 28 Spain

(13 - 18) (16 - 10)

30.6.2026. 16:15

Attendance: 820

Zhongdu Campus

Gymnasium

Referees: Ismailj Metalari (MKD) / Nenad Nikolovski (MKD)

### Spain

#	Surname and name	S	Goals / shots								Attack					Def.			Penalties				TP					
			Tot.	%	9m	6m	Wing	7m	FB	Brk.	LD	As.	PC	E7	E2	TF	St.	C7	Blk	YC	2m	R		B				
2	ROS QUESADA Anna		3/4	75	3/4								1	1	1													21:48
3	FONKENG MFOTIOG Kelly Nnonzie	S	4/4	100		3/3								2	1	1	1			1								44:24
4	ARRUABARRENA GAZTANAZPI Libe													1		2												27:07
6	JULVE BENAGES Lucia		3/5	60				3/5																				20:20
7	RODRIGUEZ LARIO Belen	S	4/8	50	2/4			0/1	1/1	0/1	1/1	2		1	1	4	1											33:00
8	JALLOW DIALLO Kadidiatou		3/4	75		2/3																						15:08
9	CATALÁ MOLLÁ Martina	S										1		2														27:43
10	PATINO LIMES Nerea		4/10	40	1/2			2/4		1/2	0/2	1	1			2			2									31:25
11	FIDALGO DURAN Carmen	S	3/4	75						3/4		3		2		4			1					1				33:36
12	ANTON VALERO Teresa																											6:57
13	BOMABA SANTOS Lidia Trinidad	S	1/1	100			1/1												1									32:41
15	LLUCH RICO Paula		1/2	50			1/2							1														20:38
16	BERNABE COBOS Udane	S																										49:02
18	PEREZ RODRIGUEZ Eva Maria		0/1	0						0/1		1			1				1									13:17
19	PALANQUÉS MARTORELL Sara	S	2/2	100		1/1	1/1												1									40:02
20	RODRIGUEZ MAGALLON Laura											1			1													2:52
	Team / bench																											
	TOTAL		28/45	62	6/10	6/7	3/4	5/10	1/1	6/10	1/3	9	2	10	4	14	5	3	1	0	1	0	0					

#	Surname and name	Saves / shots								
		Tot.	%	9m	6m	Wing	7m	FB	Brk.	LD
12	ANTON VALERO Teresa	1/7	14		0/3	0/1	1/2	0/1		0/1
16	BERNABE COBOS Udane	13/36	36	6/11	0/2	0/5	0/1	0/4	6/12	1/1
	TOTAL	14/43	33	6/11	0/5	0/6	1/3	0/5	6/12	1/1

Coach: Joaquin Jaime Rocamora Cases

Number of attacks: 57, Efficiency: 49%, Average Duration: 37.84 seconds

### Attack by type of defense

	Shots	9m	6m	Wing	TF	E7	E2
On def. 6-0	21/31	6/10	6/7	3/4	14	10	4
Fastbreak	1/1				0	0	0

### Defense by type

	Total	9m	6m	Wing	Stl.	C7	2m
Def. 6-0	22/40	5/15	5/6	6/6	5	3	0
Fastbreak	5/5				0	0	1

### Attack with superiority / minority / goalkeeper out

	Attack				Reaction		
	Att.	Eff.	Shots	TF	FB	LD	Tot.
7 on 6 (GK out)	8	38%	3/5	3	0/0	0/1	0/1
6 on 6	42	50%	21/31	11			
7 on 5 (GK out)	2	50%	1/2	0	0/0	0/0	0/0
6 on 5 (GK out)	1	0%	0/1	0	0/0	0/0	0/0
6 on 5	4	75%	3/4	0			

Player superiority / GK out counted at the end of attack (in case it changes during attack)

### Defense with superiority / minority / goalkeeper out

	Attack				Reaction		
	Att.	Eff.	Shots	TF	FB	LD	Tot.
7 on 6 (GK out)	17	47%	8/13	4	0/0	0/2	0/2
7 on 5 (GK out)	1	0%	0/1	0	0/0	0/0	0/0
6 on 6 (GK out)	6	67%	4/5	1	0/0	1/1	1/1
6 on 5 (GK out)	1	0%	0/1	0	0/0	0/0	0/0
6 on 6	32	53%	17/26	6			

Numbers show attacking numbers of opponent. Lower efficiency of opponent means better defense of this team

# Jersey number Tot. Total shooting 6m 6m (line) shooting 9m 9m shooting Wng Wing shooting FB Fastbreak sh. 7m 7m penalty sh.  
 Brk. Breakthrough sh. LD Long distance sh. As. Assists PC Pass clear chance E7 Earned 7m pen. TF Technical faults St. Steals  
 2m 2m punishments C7. Committed 7m E2 Earned 2m pun. YC. Yellow cards R/B Red/Blue cards Blk. Blocks S Starting Line-up



# 25th IHF Women's Junior World Championship 2026



Main Round - Group II, 2. round

## Match Team Statistics

Match No. 71

## Germany 29 - 28 Spain

(13 - 18) (16 - 10)

30.6.2026. 16:15

Attendance: 820

Zhongdu Campus

Gymnasium

Referees: Ismailj Metalari (MKD) / Nenad Nikolovski (MKD)

### Shot distribution by player

#### 2 A. Ros Quesada

		1/1
2/3		

#### 3 K. Fonkeng Mfotio

		2/2
2/2		

#### 4 L. Arruabarrena Gaztanazpi


#### 6 L. Julve Benages

		2/2
		1/1
0/1		

1 miss.

#### 7 B. Rodriguez Lario

1/1	0/1	2/2
		0/1
0/1	1/1	

1 miss.

#### 8 K. Jallow Diallo

1/1		
0/1	1/1	

1/1 lob

#### 9 M. Catalá Mollá


#### 10 N. Patino Limes

0/1		
1/1		1/1
2/4		

1 post 2 miss.

#### 11 C. Fidalgo Duran

1/2		
1/1		1/1

#### 13 L. Bomaba Santos

1/1		

#### 15 P. Lluch Rico

1/1		
		0/1

#### 18 E. Perez Rodriguez

		0/1

#### 19 S. Palanqués Martorell

	1/1	1/1

#### 20 L. Rodriguez Magallon


### TOTAL

3/5	0/1	7/8
3/3		3/4
7/13	3/3	1/2

1 post 4 miss. 1/1 lob

### Saves distribution goalkeepers

#### 12 T. Anton Valero

0/1		
0/1		0/1
0/3	1/1	

#### 16 U. Bernabe Cobos

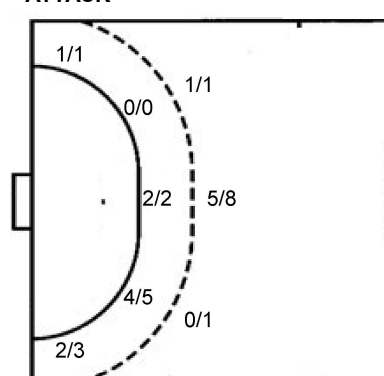
3/9	1/2	1/3
0/2		2/3
4/7	1/4	1/6

### TOTAL

3/10	1/2	1/3
0/3		2/4
4/10	2/5	1/6

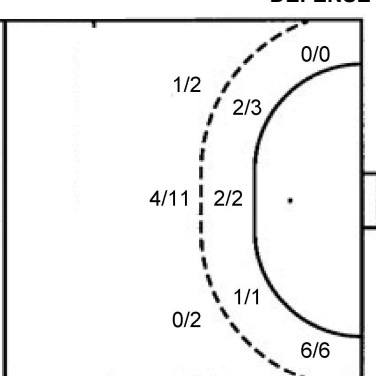
### Shots by position

#### ATTACK



7m penalties 5/10  
Fastbreak 1/1  
Breakthrough 6/10  
Long dist. 1/3

#### DEFENSE



7m penalties 2/3  
Fastbreak 5/5  
Breakthrough 6/13  
Long dist. 0/2

### Shooting statistics

Position	Goals	Sav.	Miss.	Post	Blk.	Total	%
Back (9m)	6	3	1	0	0	10	60
Line (6m)	6	1	0	0	0	7	86
Wing	3	1	0	0	0	4	75
7m penalties	5	3	2	0	0	10	50
Fastbreak	1	0	0	0	0	1	100
Breakthrough	6	4	0	0	0	10	60
<b>Total</b>	<b>27</b>	<b>12</b>	<b>3</b>	<b>0</b>	<b>0</b>	<b>42</b>	<b>64</b>

# Jersey number Tot. Total shooting 6m 6m (line) shooting 9m 9m shooting Wng Wing shooting FB Fastbreak sh. 7m 7m penalty sh.  
Brk. Breakthrough sh. LD Long distance sh. As. Assists PC Pass clear chance E7 Earned 7m pen. TF Technical faults St. Steals  
2m 2m punishments C7. Committed 7m E2 Earned 2m pun. YC. Yellow cards R/B Red/Blue cards Blk. Blocks S Starting Line-up

