





# 25th IHF Women's Junior World Championship 2026



President's Cup - Group II, 2. round

Match Team Statistics

Match No. 70

## Canada 18 - 38 Turkiye

(6 - 20) (12 - 18)

30.6.2026. 14:00

Attendance: 120

Zhongdu Campus

Gymnasium

Referees: Maryna Duplii (UKR) / Olena Karpushchenko (UKR)

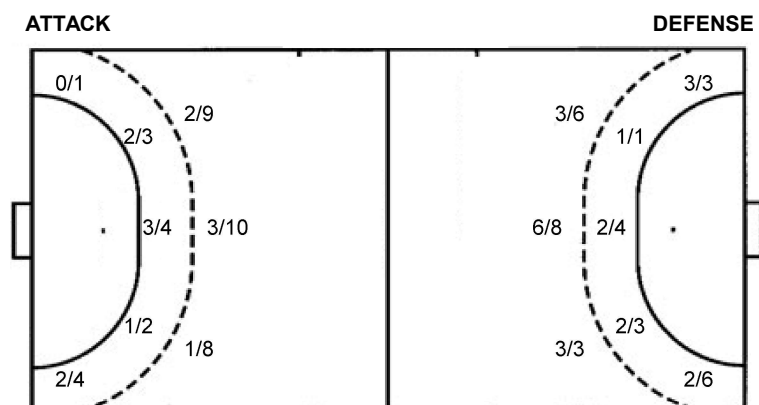
### Shot distribution by player

<b>4 M. Reid</b> 1 miss.	<b>5 O. Chagnon</b>	<b>6 A. Reny</b> 1 miss. 2/3	<b>7 A. Leclair</b> 0/1 0/1 2 post 1 block 1/1 lob	<b>8 D. Blais</b> 1/1 0/1	<b>9 G. Landry</b> 0/1	<b>14 F. Boisclair</b> 0/1 1/2 1/2 0/1 2 miss. 1 block
<b>19 C. Halus-Udrea</b> 0/1 0/1 2 block	<b>21 H. English</b>	<b>22 M. Lemaire</b> 1/1 0/1 1/2 1/1 2 post 2 miss. 2 block	<b>26 C. Fournier</b> 1/1	<b>36 P. Botarel</b> 1/1 1/1 2/2 0/1 0/1	<b>37 K. Vrdoljak</b> 1 miss. 2/2 2/2 0/1	<b>TOTAL</b> 3/3 0/1 0/1 1/1 0/2 0/1 7/11 4/8 2/5 4 post 7 miss. 6 block 1/1 lob

### Saves distribution goalkeepers

<b>13 A. Bouly</b> 1/1 0/1 0/2	<b>16 A. Florescu</b> 0/2 0/1 0/4 0/2 0/6	<b>33 R. Roy</b> 0/4 1/1 0/3	<b>TOTAL</b> 1/7 0/1 1/6 1/4 0/11
1/2 0/2 1/4	1/1 1/4	0/4	1/3 2/12

### Shots by position



7m penalties	0/1
Fastbreak	3/5
Breakthrough	1/4
Long dist.	0/0

7m penalties	3/4
Fastbreak	6/6
Breakthrough	7/9
Long dist.	0/0

### Shooting statistics

Position	Goals	Sav.	Miss.	Post	Blk.	Total	%
Back (9m)	6	9	3	3	6	27	22
Line (6m)	6	2	1	0	0	9	67
Wing	2	1	2	0	0	5	40
7m penalties	0	0	1	0	0	1	0
Fastbreak	3	2	0	0	0	5	60
Breakthrough	1	2	0	1	0	4	25
<b>Total</b>	<b>18</b>	<b>16</b>	<b>7</b>	<b>4</b>	<b>6</b>	<b>51</b>	<b>35</b>

# Jersey number Tot. Total shooting 6m 6m (line) shooting 9m 9m shooting Wng Wing shooting FB Fastbreak sh. 7m 7m penalty sh.  
 Brk. Breakthrough sh. LD Long distance sh. As. Assists PC Pass clear chance E7 Earned 7m pen. TF Technical faults St. Steals  
 2m 2m punishments C7. Committed 7m E2 Earned 2m pun. YC. Yellow cards R/B Red/Blue cards Blk. Blocks S Starting Line-up



# 25th IHF Women's Junior World Championship 2026



President's Cup - Group II, 2. round

Match Team Statistics  
Match No. 70

**Canada 18 - 38 Turkiye**  
(6 - 20) (12 - 18)

30.6.2026. 14:00  
Attendance: 120  
Zhongdu Campus  
Gymnasium

Referees: Maryna Duplii (UKR) / Olena Karpushchenko (UKR)

## Turkiye

Players		Goals / shots									Attack				Def.			Penalties			TP				
#	Surname and name	S	Tot.	%	9m	6m	Wing	7m	FB	Brk.	LD	As.	PC	E7	E2	TF	St.	C7	Blk	YC		2m	R	B	
2	KAHRAMAN Aylin Meryem		1/2	50		0/1				1/1		1				2	1				1			16:52	
3	BOZOVA Seval	S	2/3	67			1/2		1/1							1								34:07	
5	YÜKSEL İlayda																							12:10	
7	ÇINAR Kübra Nur	S	1/1	100		1/1													1					29:14	
11	DAGLI Sudenaz	S	3/3	100			2/2		1/1			1	1	1			2							30:59	
13	HÜZMELİ Ela		2/2	100			1/1		1/1															27:30	
14	SÖNMEZ Bugu		0/1	0	0/1							1				3			1		1			19:49	
23	SEVEN Buket	S	5/5	100			1/1		3/3	1/1		4			1	2					1			25:43	
24	KAYA Nazlı		1/2	50				1/2						1	1	4	1							28:14	
28	DURDU Sümeyye		1/4	25		1/1	0/3																	25:53	
32	ÖZ Siddika		2/4	50		2/4								1		1								23:00	
38	ÖZTÜRK Azra	S	6/6	100	4/4			1/1		1/1			2			2	1		2					19:38	
41	DIKME Gazel		6/9	67	2/3			1/1		3/5		4	3	1		4	1	1						30:00	
43	LAHAÇLAR İrem Asya											1				1								32:29	
45	YILMAZ Betül	S	1/1	100	1/1																			25:42	
71	MUHCU Hande	S	7/10	70	5/8	1/1				1/1			1		1	1	1		2					38:40	
Team / bench																									
TOTAL			38/53	72	12/17	5/8	5/9	3/4	6/6	7/9	0/0	12	7	4	3	21	7	1	6	0	3	0	0		

Goalkeepers		Saves / shots								
#	Surname and name	Tot.	%	9m	6m	Wing	7m	FB	Brk.	LD
43	LAHAÇLAR İrem Asya	11/24	46	6/9	0/6	1/2		2/5	2/2	
45	YILMAZ Betül	5/10	50	3/6	2/2	0/1			0/1	
TOTAL		16/34	47	9/15	2/8	1/3	0/0	2/5	2/3	0/0

Coach: David Ginesta Montes

Number of attacks: 71, Efficiency: 54%, Average Duration: 22.48 seconds

### Attack by type of defense

	Shots	9m	6m	Wing	TF	E7	E2
On def. 6-0	17/22	9/10	2/4	3/4	3	2	2
On def. 5-1	11/20	3/7	2/3	2/5	18	2	1
Fastbreak	6/6				0	0	0

### Defense by type

	Total	9m	6m	Wing	Stl.	C7	2m
Def. 6-0	15/44	6/26	6/9	2/5	7	1	0
Fastbreak	3/5				0	0	3

### Attack with superiority / minority / goalkeeper out

	Attack				Reaction		
	Att.	Eff.	Shots	TF	FB	LD	Tot.
7 on 6 (GK out)	1	100%	1/1	0	0/0	0/0	0/0
6 on 6 (GK out)	3	67%	2/3	0	0/1	0/0	0/1
6 on 6	61	54%	33/42	19			
6 on 5 (GK out)	1	100%	1/1	0	0/0	0/0	0/0
6 on 5	5	20%	1/3	2			

Player superiority / GK out counted at the end of attack (in case it changes during attack)

### Defense with superiority / minority / goalkeeper out

	Attack				Reaction		
	Att.	Eff.	Shots	TF	FB	LD	Tot.
6 on 6 (GK out)	4	0%	0/4	0	0/0	0/0	0/0
6 on 5 (GK out)	1	0%	0/1	0	0/0	0/0	0/0
6 on 6	60	28%	17/41	19			
6 on 5	3	0%	0/1	2			
6 on 4	1	100%	1/1	0			
5 on 6	1	0%	0/0	1			

Numbers show attacking numbers of opponent. Lower efficiency of opponent means better defense of this team

# Jersey number Tot. Total shooting 6m 6m (line) shooting 9m 9m shooting Wng Wing shooting FB Fastbreak sh. 7m 7m penalty sh.  
Brk. Breakthrough sh. LD Long distance sh. As. Assists PC Pass clear chance E7 Earned 7m pen. TF Technical faults St. Steals  
2m 2m punishments C7. Committed 7m E2 Earned 2m pun. YC. Yellow cards R/B Red/Blue cards Blk. Blocks S Starting Line-up



# 25th IHF Women's Junior World Championship 2026



President's Cup - Group II, 2. round

Match Team Statistics

Match No. 70

## Canada 18 - 38 Turkiye

(6 - 20) (12 - 18)

30.6.2026. 14:00

Attendance: 120

Zhongdu Campus

Gymnasium

Referees: Maryna Duplii (UKR) / Olena Karpushchenko (UKR)

### Shot distribution by player

2 A. Kahraman

1/1		

1 post

3 S. Bozova

1/1		
		1/2

5 I. Yüksel


7 K. Çınar

		1/1

11 S. Dağlı

1/1		
1/1		1/1

13 E. Hüzmeli

1/1		
		1/1

14 B. Sönmez


1 miss.

23 B. Seven

2/2		1/1
1/1		
1/1		

24 N. Kaya

		1/2

28 S. Durdu

1/1		
0/1		

2 post

32 S. Öz

1/2		
1/1		

1 miss.

38 A. Öztürk

		2/2
1/1		
2/2		1/1

41 G. Dikme

		1/1
		1/1
2/2		2/2

3 miss.

71 H. Muhcu

	1/1	0/1
		1/2
3/3		2/2

1 post

### TOTAL

6/7	1/1	5/6
3/4		2/3
11/11		9/11

4 post 5 miss.

### Saves distribution goalkeepers

43 I. Lahaçlar

0/1	1/1	1/1
0/1	2/2	
4/9	2/5	1/3

45 B. Yılmaz

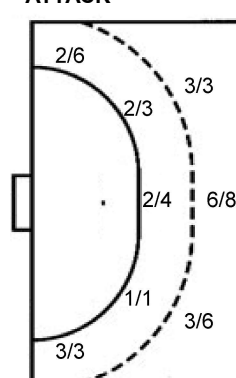
0/2		
		1/1
0/2	2/3	2/2

TOTAL

0/3	1/1	1/1
0/1	2/2	1/1
4/11	4/8	3/5

### Shots by position

ATTACK



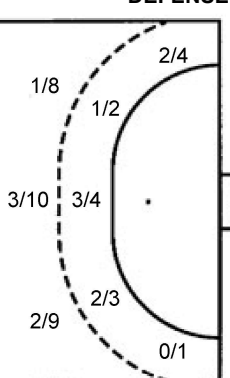
7m penalties 3/4

Fastbreak 6/6

Breakthrough 7/9

Long dist. 0/0

DEFENSE



7m penalties 0/1

Fastbreak 3/5

Breakthrough 1/4

Long dist. 0/0

### Shooting statistics

Position	Goals	Sav.	Miss.	Post	Blk.	Total	%
Back (9m)	12	2	2	1	0	17	71
Line (6m)	5	1	1	1	0	8	63
Wing	5	2	0	2	0	9	56
7m penalties	3	1	0	0	0	4	75
Fastbreak	6	0	0	0	0	6	100
Breakthrough	7	0	2	0	0	9	78
<b>Total</b>	<b>38</b>	<b>6</b>	<b>5</b>	<b>4</b>	<b>0</b>	<b>53</b>	<b>72</b>

# Jersey number Tot. Total shooting 6m 6m (line) shooting 9m 9m shooting Wng Wing shooting FB Fastbreak sh. 7m 7m penalty sh.  
 Brk. Breakthrough sh. LD Long distance sh. As. Assists PC Pass clear chance E7 Earned 7m pen. TF Technical faults St. Steals  
 2m 2m punishments C7. Committed 7m E2 Earned 2m pun. YC. Yellow cards R/B Red/Blue cards Blk. Blocks S Starting Line-up

Handball statistics and livescore by Toma-soft ltd (www.toma-soft.hr)

