



# 25th IHF Women's Junior World Championship 2026



Main Round - Group I, 2. round

Match Team Statistics  
Match No. 67

**France 31 - 19 Serbia**  
(17 - 14) (14 - 5)

30.6.2026. 18:30  
Attendance: 800  
Jinzhong College Gymnasium

Referees: Raul Oyarzun Aylagas (ESP) / Aritz Zaragueta (ESP)

## France

Players		Goals / shots									Attack				Def.			Penalties			TP				
#	Surname and name	S	Tot.	%	9m	6m	Wing	7m	FB	Brk.	LD	As.	PC	E7	E2	TF	St.	C7	Blk	YC		2m	R	B	
1	GONZALEZ Leane											2													30:14
4	GROS Blandine	S	5/5	100			1/1		4/4								3								34:29
5	BARBARIN Jade		3/4	75		2/3	1/1									1		1							32:43
7	ABDOU Dawiya		4/4	100			2/2	1/1	1/1							1									25:28
8	NAAL Liyah	S	2/4	50					2/2	0/2		1	1												40:55
9	INJAI Zeina	S	2/6	33	2/3				0/1	0/2		1		2	1	1									28:16
10	KOESTNER Claire	S	1/2	50						1/2		4	2			2									31:30
13	FERDILUS Elea		1/1	100		1/1																			12:36
14	ATANGANA Yvana		1/8	13	1/5					0/3		2	1			3	1								37:48
15	SAMAI Lyson		1/2	50		1/1			0/1			2					1	1							26:11
16	GINDRO Romane	S															1								28:53
17	CHANTELLE Melissa		2/4	50		0/1		1/1		1/2							1								10:20
18	VAMA Mara		2/3	67			1/2		1/1																16:39
19	LAMBET Lalie	S	0/1	0		0/1																			22:53
21	KINGUE Prunelle	S	7/9	78	4/5					3/4		1				2	1	1	1		1				41:05
24	LANDRIAU Maelle																								
	Team / bench																								
	<b>TOTAL</b>		31/53	58	7/13	4/7	5/6	2/2	8/10	5/15	0/0	13	4	2	1	10	8	3	1	0	1	0	0		

Goalkeepers		Saves / shots								
#	Surname and name	Tot.	%	9m	6m	Wing	7m	FB	Brk.	LD
1	GONZALEZ Leane	11/17	65	2/3	2/3	4/4	0/1	0/2	2/3	1/1
16	GINDRO Romane	8/20	40	1/2	1/3	3/4	0/2	0/2	3/7	
24	LANDRIAU Maelle									
	<b>TOTAL</b>	19/37	51	3/5	3/6	7/8	0/3	0/4	5/10	1/1

Coach: **Baradat Eric**

Number of attacks: 63, Efficiency: 49%, Average Duration: 25.08 seconds

### Attack by type of defense

	Shots	9m	6m	Wing	TF	E7	E2
On def. 6-0	3/5	1/2	0/0	1/1	2	0	0
On def. 5-1	17/34	6/11	3/5	4/5	8	2	1
Fastbreak	8/10				0	0	0

### Defense by type

	Total	9m	6m	Wing	Stl.	C7	2m
Def. 6-0	11/34	2/7	3/7	1/9	8	3	0
Fastbreak	4/4				0	0	1

### Attack with superiority / minority / goalkeeper out

	Attack				Reaction		
	Att.	Eff.	Shots	TF	FB	LD	Tot.
6 on 6 (GK out)	2	50%	1/1	1	0/0	1/1	1/1
6 on 6	59	47%	28/50	9			
6 on 5	2	100%	2/2	0			

Player superiority / GK out counted at the end of attack (in case it changes during attack)

### Defense with superiority / minority / goalkeeper out

	Attack				Reaction		
	Att.	Eff.	Shots	TF	FB	LD	Tot.
6 on 6 (GK out)	2	0%	0/1	1	0/0	0/0	0/0
6 on 6	60	28%	17/34	26			
6 on 5	3	67%	2/3	0			

Numbers show attacking numbers of opponent. Lower efficiency of opponent means better defense of this team

# Jersey number Tot. Total shooting 6m 6m (line) shooting 9m 9m shooting Wng Wing shooting FB Fastbreak sh. 7m 7m penalty sh.  
Brk. Breakthrough sh. LD Long distance sh. As. Assists PC Pass clear chance E7 Earned 7m pen. TF Technical faults St. Steals  
2m 2m punishments C7. Committed 7m E2 Earned 2m pun. YC. Yellow cards R/B Red/Blue cards Blk. Blocks S Starting Line-up



# 25th IHF Women's Junior World Championship 2026



Main Round - Group I, 2. round

## Match Team Statistics

Match No. 67

## France 31 - 19 Serbia

(17 - 14) (14 - 5)

30.6.2026. 18:30

Attendance: 800

Jinzhong College Gymnasium

Referees: Raul Oyarzun Aylagas (ESP) / Aritz Zaragueta (ESP)

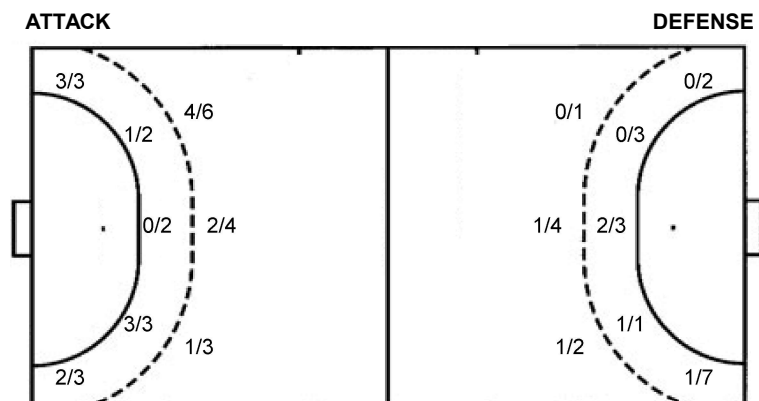
### Shot distribution by player

<b>4 B. Gros</b> 1/1    1/1 2/2    1/1	<b>5 J. Barbarin</b> 0/1 2/2 lob	<b>7 D. Abdou</b> 1/1    1/1 1/1 1/1 lob	<b>8 L. Naal</b> 1/1 0/1 1 post	<b>9 Z. Injai</b> 0/1    0/1 1/1 1/2 1 post	<b>10 C. Koestner</b> 1 miss. 1/1	<b>13 E. Ferdilus</b> 1/1
<b>14 Y. Atangana</b> 0/1 0/1 1/2 1 post 3 miss.	<b>15 L. Samai</b> 1/2	<b>17 M. Chantelly</b> 1/2    0/1 1/1	<b>18 M. Vama</b> 2/3	<b>19 L. Lambet</b> 1 miss.	<b>21 P. Kingue</b> 2/2    3/3 1/1    1/2 1 miss.	<b>TOTAL</b> 4/6    9/11 2/4    2/4 8/12    3/4 3 post 6 miss. 3/3 lob

### Saves distribution goalkeepers

<b>1 L. Gonzalez</b> 1/3    1/1    1/3 1/1    2/2 2/4    1/1    2/2	<b>16 R. Gindro</b> 1/2    1/1    1/4 1/1    1/1 2/8    1/3	<b>24 M. Landriau</b>	<b>TOTAL</b> 2/5    2/2    2/7 1/1    1/1    3/3 4/12    1/1    3/5
--	--	-----------------------	--

### Shots by position



7m penalties 2/2  
Fastbreak 8/10  
Breakthrough 5/15  
Long dist. 0/0

7m penalties 3/3  
Fastbreak 4/4  
Breakthrough 5/11  
Long dist. 1/2

### Shooting statistics

Position	Goals	Sav.	Miss.	Post	Blk.	Total	%
Back (9m)	7	4	1	1	0	13	54
Line (6m)	4	2	1	0	0	7	57
Wing	5	1	0	0	0	6	83
7m penalties	2	0	0	0	0	2	100
Fastbreak	8	2	0	0	0	10	80
Breakthrough	5	4	4	2	0	15	33
<b>Total</b>	<b>31</b>	<b>13</b>	<b>6</b>	<b>3</b>	<b>0</b>	<b>53</b>	<b>58</b>

# Jersey number    Tot. Total shooting    6m 6m (line) shooting    9m 9m shooting    Wng Wing shooting    FB Fastbreak sh.    7m 7m penalty sh.  
Brk. Breakthrough sh.    LD Long distance sh.    As. Assists    PC Pass clear chance    E7 Earned 7m pen.    TF Technical faults    St. Steals  
2m 2m punishments    C7. Committed 7m    E2 Earned 2m pun.    YC. Yellow cards    R/B Red/Blue cards    Blk. Blocks    S Starting Line-up



# 25th IHF Women's Junior World Championship 2026



Main Round - Group I, 2. round

Match Team Statistics  
Match No. 67

**France 31 - 19 Serbia**  
(17 - 14) (14 - 5)

30.6.2026. 18:30  
Attendance: 800  
Jinzhong College Gymnasium

Referees: Raul Oyarzun Aylagas (ESP) / Aritz Zaragueta (ESP)

## Serbia

Players		Goals / shots									Attack				Def.			Penalties			TP				
#	Surname and name	S	Tot.	%	9m	6m	Wing	7m	FB	Brk.	LD	As.	PC	E7	E2	TF	St.	C7	Bik	YC	2m	R	B		
8	MARINOVIĆ Tara		1/2	50		1/1					0/1					1									17:01
9	ŽAKULA Sara																								11:44
10	PETKOVIĆ Ema		0/2	0		0/2																			18:48
11	NEDELJKOVIĆ Mia		5/9	56			1/5		4/4								1								38:50
12	GRUJIČIĆ Ivona		1/1	100		1/1																			24:47
13	JANKOVIĆ Lena		0/1	0	0/1								1	1		3									23:44
15	RADOVIĆ Sara	S	3/6	50	2/3		0/1			1/2		1	1	1	1	5									31:39
18	JANKOVIĆ Tijana	S	1/1	100		1/1											1	1			1				19:43
19	MILOSAVLJEVIĆ Leana	S	0/3	0	0/2	0/1							1	1		6	1								38:33
22	OTAŠEVIĆ Milica	S	3/5	60					2/4	1/1		2	4			4	1								42:52
23	DUŠIĆ Tamara		1/4	25						1/4						6		1							27:48
26	TANOVIĆ Jana																								4:25
44	ĐEKIĆ Mia		3/4	75			0/1	3/3																	35:48
60	BULATOVIĆ Nikolina	S	1/3	33		0/1	0/1			1/1						2									28:46
73	RANKOVIĆ Zorica	S	0/2	0	0/1		0/1						1												25:50
91	ČINKU Tatjana	S																							29:42
	Team / bench																								
	<b>TOTAL</b>		19/43	44	2/7	3/7	1/9	3/3	4/4	5/11	1/2	6	8	3	1	27	4	2	0	0	1	0	0		

Goalkeepers		Saves / shots								
#	Surname and name	Tot.	%	9m	6m	Wing	7m	FB	Brk.	LD
12	GRUJIČIĆ Ivona	6/18	33	1/2	2/4	1/3	0/1	1/4	1/4	
26	TANOVIĆ Jana	1/3	33	1/2	0/1					
91	ČINKU Tatjana	6/23	26	2/7	0/1	0/3	0/1	1/6	3/5	
	<b>TOTAL</b>	13/44	30	4/11	2/6	1/6	0/2	2/10	4/9	0/0

Coach: **Zoran Barbulović**

Number of attacks: 65, Efficiency: 29%, Average Duration: 31.08 seconds

### Attack by type of defense

	Shots	9m	6m	Wing	TF	E7	E2
<b>On def. 6-0</b>	11/34	2/7	3/7	1/9	27	3	1
<b>Fastbreak</b>	4/4				0	0	0

### Defense by type

	Total	9m	6m	Wing	Stl.	C7	2m
<b>Def. 6-0</b>	3/5	1/2	0/0	1/1	1	0	0
<b>Def. 5-1</b>	17/34	6/11	3/5	4/5	3	2	0
<b>Fastbreak</b>	8/10				0	0	1

### Attack with superiority / minority / goalkeeper out

	Attack				Reaction		
	Att.	Eff.	Shots	TF	FB	LD	Tot.
<b>6 on 6 (GK out)</b>	2	0%	0/1	1	0/0	0/0	0/0
<b>6 on 6</b>	60	28%	17/34	26			
<b>6 on 5</b>	3	67%	2/3	0			

Player superiority / GK out counted at the end of attack (in case it changes during attack)

### Defense with superiority / minority / goalkeeper out

	Attack				Reaction		
	Att.	Eff.	Shots	TF	FB	LD	Tot.
<b>6 on 6 (GK out)</b>	2	50%	1/1	1	0/0	1/1	1/1
<b>6 on 6</b>	59	47%	28/50	9			
<b>6 on 5</b>	2	100%	2/2	0			

Numbers show attacking numbers of opponent. Lower efficiency of opponent means better defense of this team

# Jersey number Tot. Total shooting 6m 6m (line) shooting 9m 9m shooting Wng Wing shooting FB Fastbreak sh. 7m 7m penalty sh.  
Brk. Breakthrough sh. LD Long distance sh. As. Assists PC Pass clear chance E7 Earned 7m pen. TF Technical faults St. Steals  
2m 2m punishments C7. Committed 7m E2 Earned 2m pun. YC. Yellow cards R/B Red/Blue cards Blk. Blocks S Starting Line-up

Handball statistics and livescore by Toma-soft ltd (www.toma-soft.hr)



# 25th IHF Women's Junior World Championship 2026



Main Round - Group I, 2. round

## Match Team Statistics

Match No. 67

## France 31 - 19 Serbia

(17 - 14) (14 - 5)

30.6.2026. 18:30

Attendance: 800

Jinzhong College Gymnasium

Referees: Raul Oyarzun Aylagas (ESP) / Aritz Zaragueta (ESP)

### Shot distribution by player

8 T. Marinović

1/1		0/1

9 S. Žakula


10 E. Petković

0/1		

1 miss.

11 M. Nedeljković

	0/1	4/4
0/1		0/1
		1/1

1 miss.

13 L. Janković


1 miss.

15 S. Radović

2/3		0/1
1/1		0/1

18 T. Janković

		1/1

19 L. Milosavljević

0/1		
	0/1	

1 block

22 M. Otašević

		0/1
2/3		1/1

23 T. Dušić

	0/1	
		0/1
1/1		

1 post

44 M. Đekić

3/4		

60 N. Bulatović

1/1		
0/1		0/1

73 Z. Ranković

		0/1
	0/1	

TOTAL

3/5	0/2	5/7
0/1	0/1	0/3
8/12	0/1	2/5

1 post 3 miss. 1 block

### Saves distribution goalkeepers

12 I. Grujičić

0/2		1/4
2/3		1/2
2/4		0/1

26 J. Tanović

0/1		
		1/1

91 T. Činku

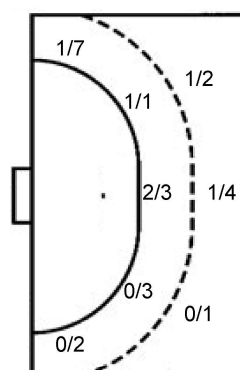
2/3		1/7
0/1		1/2
2/8		0/2

TOTAL

2/6		2/11
2/4		2/4
4/12		1/4

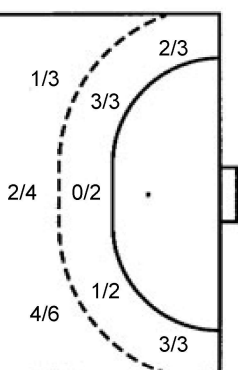
### Shots by position

ATTACK



7m penalties 3/3  
Fastbreak 4/4  
Breakthrough 5/11  
Long dist. 1/2

DEFENSE



7m penalties 2/2  
Fastbreak 8/10  
Breakthrough 5/15  
Long dist. 0/0

### Shooting statistics

Position	Goals	Sav.	Miss.	Post	Blk.	Total	%
Back (9m)	2	3	1	0	1	7	29
Line (6m)	3	3	1	0	0	7	43
Wing	1	7	1	0	0	9	11
7m penalties	3	0	0	0	0	3	100
Fastbreak	4	0	0	0	0	4	100
Breakthrough	5	5	0	1	0	11	45
<b>Total</b>	<b>18</b>	<b>18</b>	<b>3</b>	<b>1</b>	<b>1</b>	<b>41</b>	<b>44</b>

# Jersey number Tot. Total shooting 6m 6m (line) shooting 9m 9m shooting Wng Wing shooting FB Fastbreak sh. 7m 7m penalty sh.  
Brk. Breakthrough sh. LD Long distance sh. As. Assists PC Pass clear chance E7 Earned 7m pen. TF Technical faults St. Steals  
2m 2m punishments C7. Committed 7m E2 Earned 2m pun. YC. Yellow cards R/B Red/Blue cards Blk. Blocks S Starting Line-up

Handball statistics and livescore by Toma-soft ltd (www.toma-soft.hr)

