



25th IHF Women's Junior World Championship 2026



President's Cup - Group I, 2. round

Match Team Statistics
Match No. 65

Egypt 26 - 20 Angola
(15 - 10) (11 - 10)

30.6.2026. 11:45
Attendance: 150
Jinzhong College Gymnasium

Referees: Ahmad Gheisarian (IRI) / Amir Gheisarian (IRI)

Egypt

Players		Goals / shots									Attack					Def.			Penalties			TP			
#	Surname and name	S	Tot.	%	9m	6m	Wing	7m	FB	Brk.	LD	As.	PC	E7	E2	TF	St.	C7	Blk	YC	2m	R	B		
1	SALAMA Jaydaa																								0:23
2	KHALED HUSSEIN AHMED Razan		1/2	50						1/2		1		1		3	1								20:12
4	YASSER HUSSEIN Jana		1/1	100					1/1							2									17:23
5	AHMED ABDELMOEZZ Basmala	S														1		2		1	1				18:40
9	ELSHEREF Shrouk	S	5/9	56	2/5	1/1			1/1	1/2		3	1		1	2									55:35
10	ASHRAF ABDELNASER Merna																								
23	MAHMOUD EISA Jana	S	1/2	50	0/1	1/1						3	1				1								52:46
30	AHMED Reem																								
39	TAMER ABDALLAH Jowaireya	S	5/6	83			2/3		1/1	1/1	1/1	1				1									43:51
55	KHAMES MOHAMED Malak		0/1	0	0/1																				2:12
68	TAMER ATAWEYA Nada		3/3	100		2/2			1/1					1				2	2						41:20
70	MOHAMED ABDELSALAM Rokaya	S	8/11	73			5/6	3/4	0/1			2		1		1									59:51
80	SAID FAYED Amal	S												1		1		1							29:56
88	MAHMOUD DEABES Sarmada																								
98	SAYED Gihad	S										2	1			1									55:34
99	WALED GHONIM Judy		2/5	40	1/3					1/1	0/1	3			3	2	1								22:17
	Team / bench																								
	TOTAL		26/40	65	3/10	4/4	7/9	3/4	4/5	4/6	1/2	15	3	4	4	14	3	5	2	2	1	0	0		

Goalkeepers		Saves / shots								
#	Surname and name	Tot.	%	9m	6m	Wing	7m	FB	Brk.	LD
1	SALAMA Jaydaa	1/2	50		0/1		1/1			
98	SAYED Gihad	13/32	41	4/13	3/3	1/5	2/4	0/1	3/6	
	TOTAL	14/34	41	4/13	3/4	1/5	3/5	0/1	3/6	0/0

Coach: Helmy Mosabah Mohamed Mohamed Aboels

Number of attacks: 53, Efficiency: 49%, Average Duration: 34.24 seconds

Attack by type of defense

	Shots	9m	6m	Wing	TF	E7	E2
On def. 6-0	17/26	3/9	4/4	6/8	13	4	4
On def. 5-1	1/3	0/1	0/0	1/1	1	0	0
Fastbreak	4/5				0	0	0

Defense by type

	Total	9m	6m	Wing	Stl.	C7	2m
Def. 6-0	12/25	6/14	1/4	2/3	0	4	0
Def. 5-1	5/12	3/7	0/0	2/2	3	1	0
Fastbreak	1/1				0	0	1

Attack with superiority / minority / goalkeeper out

	Attack				Reaction		
	Att.	Eff.	Shots	TF	FB	LD	Tot.
7 on 6 (GK out)	10	60%	6/8	2	0/0	0/0	0/0
6 on 6	36	39%	14/24	12			
6 on 5	5	80%	4/5	0			
5 on 5	1	100%	1/1	0			
5 on 4	1	100%	1/1	0			

Player superiority / GK out counted at the end of attack (in case it changes during attack)

Defense with superiority / minority / goalkeeper out

	Attack				Reaction		
	Att.	Eff.	Shots	TF	FB	LD	Tot.
7 on 6 (GK out)	8	25%	2/3	5	1/1	0/1	1/2
6 on 6 (GK out)	3	67%	2/3	0	1/1	0/0	1/1
6 on 6	40	40%	16/34	6			
6 on 5 (GK out)	2	0%	0/2	0	0/0	0/0	0/0

Numbers show attacking numbers of opponent. Lower efficiency of opponent means better defense of this team

Jersey number Tot. Total shooting 6m 6m (line) shooting 9m 9m shooting Wng Wing shooting FB Fastbreak sh. 7m 7m penalty sh.
Brk. Breakthrough sh. LD Long distance sh. As. Assists PC Pass clear chance E7 Earned 7m pen. TF Technical faults St. Steals
2m 2m punishments C7. Committed 7m E2 Earned 2m pun. YC. Yellow cards R/B Red/Blue cards Blk. Blocks S Starting Line-up



25th IHF Women's Junior World Championship 2026



President's Cup - Group I, 2. round

Match Team Statistics

Match No. 65

Egypt 26 - 20 Angola

(15 - 10) (11 - 10)

30.6.2026. 11:45

Attendance: 150

Jinzhong College Gymnasium

Referees: Ahmad Gheisarian (IRI) / Amir Gheisarian (IRI)

Shot distribution by player

2 R. Khaled Hussien Ahmed

		1/1
0/1		

4 J. Yasser Hussien

1/1 lob

5 B. Ahmed Abdelmoezz

9 S. Elsheref

		1/1
1/1	0/1	
	1/2	2/2

1 miss. 1 block

10 M. Ashraf Abdelnaser

23 J. Mahmoud Eisa

0/1	1/1	

30 R. Ahmed

39 J. Tamer Abdallah

		1/1
1/1		
		3/3

1 post

55 M. Khames Mohamed

1 miss.

68 N. Tamer Ataweya

1/1		
1/1	1/1	

70 R. Mohamed Abdelsalam

1/1		3/3
	0/1	
2/2	1/1	1/2

1 post

80 A. Said Fayed

88 S. Mahmoud Deabes

99 J. Waled Ghonim

		1/1
	0/1	
	1/1	

2 miss.

TOTAL

2/2		6/6
1/1	1/4	1/1
3/3	4/7	7/8

2 post 4 miss. 1 block 1/1 lob

Saves distribution goalkeepers

1 J. Salama

		0/1
1/1		

98 G. Sayed

1/2	1/1	1/5
3/5		2/3
4/12		1/4

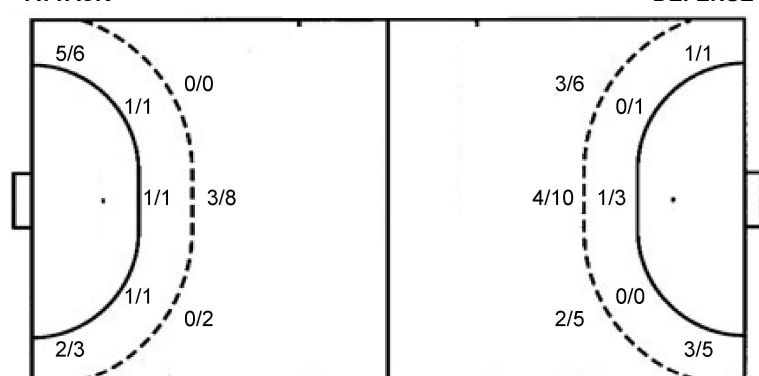
TOTAL

1/2	1/1	1/6
3/5		2/3
5/13		1/4

Shots by position

ATTACK

DEFENSE



7m penalties 3/4
Fastbreak 4/5
Breakthrough 4/6
Long dist. 1/2

7m penalties 2/5
Fastbreak 1/1
Breakthrough 3/7
Long dist. 0/0

Shooting statistics

Position	Goals	Sav.	Miss.	Post	Blk.	Total	%
Back (9m)	3	3	3	0	1	10	30
Line (6m)	4	0	0	0	0	4	100
Wing	7	1	0	1	0	9	78
7m penalties	3	0	0	1	0	4	75
Fastbreak	4	1	0	0	0	5	80
Breakthrough	4	1	1	0	0	6	67
Total	25	6	4	2	1	38	66

Jersey number Tot. Total shooting 6m 6m (line) shooting 9m 9m shooting Wng Wing shooting FB Fastbreak sh. 7m 7m penalty sh.
Brk. Breakthrough sh. LD Long distance sh. As. Assists PC Pass clear chance E7 Earned 7m pen. TF Technical faults St. Steals
2m 2m punishments C7. Committed 7m E2 Earned 2m pun. YC. Yellow cards R/B Red/Blue cards Blk. Blocks S Starting Line-up

Handball statistics and livescore by Toma-soft ltd (www.toma-soft.hr)



25th IHF Women's Junior World Championship 2026



President's Cup - Group I, 2. round

Match Team Statistics

Match No. 65

Egypt 26 - 20 Angola

(15 - 10) (11 - 10)

30.6.2026. 11:45

Attendance: 150

Jinzhong College Gymnasium

Referees: Ahmad Gheisarian (IRI) / Amir Gheisarian (IRI)

Angola

#	Surname and name	S	Goals / shots							Attack				Def.			Penalties				TP				
			Tot.	%	9m	6m	Wing	7m	FB	Brk.	LD	As.	PC	E7	E2	TF	St.	C7	Blk	YC		2m	R	B	
2	MANUEL Vilma Da Cunha		0/1	0	0/1																			14:27	
3	LOURENÇO Telma Francisca Da Costa		1/1	100	1/1																			49:30	
6	CATECO Isabel Tinguica	S	8/14	57	5/10			1/1	1/2	1/1						1	1	2				1		51:01	
7	PEREIRA Beatriz Bundo Calepete	S	1/2	50												1	3	1						43:47	
9	KESSONGO Eliana Jusane Catumbela																							0:02	
10	PAULINO Patricia Rossana Pascoal	S	0/2	0	0/2											1		1						32:28	
11	CASSOMA Gitiiane Ariane Cangombe		0/1	0	0/1																			10:54	
12	NETO Daniela Virginia Miquenha De S	S																						18:30	
13	NUNDA Balbina Cassova Afonsa		4/10	40	1/2	1/1	1/1	1/3		0/3					1	1								43:35	
15	COSTA Leticia		3/7	43	2/5			1/2								1			1					23:19	
20	ANJOS Augusta Rodrina Tchinhama Dos																								
33	DOMINGOS Elizandra Helena Lopes																								36:10
77	AMBROSIO Isabel Zinga Da Silva	S	1/2	50				1/2														1		32:02	
90	LUSSENDE Carla Beatriz	S	2/4	50	0/2											3								46:09	
98	ALFREDO Marina Calei Dos Anjos	S														1							2	18:06	
Team / bench																							1		
TOTAL			20/44	45	9/21	1/4	4/6	2/5	1/1	3/7	0/0	4	4	5	1	11	3	4	1	1	4	0	0		

#	Surname and name	Saves / shots								
		Tot.	%	9m	6m	Wing	7m	FB	Brk.	LD
12	NETO Daniela Virginia Miquenha De S	0/10	0	0/2	0/2	0/4			0/2	
33	DOMINGOS Elizandra Helena Lopes	7/20	35	3/4	0/2	1/4	0/3	1/3	1/3	1/1
TOTAL		7/30	23	3/6	0/4	1/8	0/3	1/3	1/5	1/1

Coach: José Chuma

Number of attacks: 53, Efficiency: 38%, Average Duration: 33.62 seconds

Attack by type of defense

	Shots	9m	6m	Wing	TF	E7	E2
On def. 6-0	12/25	6/14	1/4	2/3	6	4	1
On def. 5-1	5/12	3/7	0/0	2/2	5	1	0
Fastbreak	1/1				0	0	0

Defense by type

	Total	9m	6m	Wing	Stl.	C7	2m
Def. 6-0	17/26	3/9	4/4	6/8	3	4	0
Def. 5-1	1/3	0/1	0/0	1/1	0	0	0
Fastbreak	4/5				0	0	4

Attack with superiority / minority / goalkeeper out

	Attack				Reaction		
	Att.	Eff.	Shots	TF	FB	LD	Tot.
7 on 6 (GK out)	8	25%	2/3	5	1/1	0/1	1/2
6 on 6 (GK out)	3	67%	2/3	0	1/1	0/0	1/1
6 on 6	40	40%	16/34	6			
6 on 5 (GK out)	2	0%	0/2	0	0/0	0/0	0/0

Player superiority / GK out counted at the end of attack (in case it changes during attack)

Defense with superiority / minority / goalkeeper out

	Attack				Reaction		
	Att.	Eff.	Shots	TF	FB	LD	Tot.
7 on 6 (GK out)	10	60%	6/8	2	0/0	0/0	0/0
6 on 6	36	39%	14/24	12			
6 on 5	5	80%	4/5	0			
5 on 5	1	100%	1/1	0			
5 on 4	1	100%	1/1	0			

Numbers show attacking numbers of opponent. Lower efficiency of opponent means better defense of this team

Jersey number Tot. Total shooting 6m 6m (line) shooting 9m 9m shooting Wng Wing shooting FB Fastbreak sh. 7m 7m penalty sh.
 Brk. Breakthrough sh. LD Long distance sh. As. Assists PC Pass clear chance E7 Earned 7m pen. TF Technical faults St. Steals
 2m 2m punishments C7. Committed 7m E2 Earned 2m pun. YC. Yellow cards R/B Red/Blue cards Blk. Blocks S Starting Line-up



25th IHF Women's Junior World Championship 2026



President's Cup - Group I, 2. round

Match Team Statistics

Match No. 65

Egypt 26 - 20 Angola

(15 - 10) (11 - 10)

30.6.2026. 11:45

Attendance: 150

Jinzhong College Gymnasium

Referees: Ahmad Gheisarian (IRI) / Amir Gheisarian (IRI)

Shot distribution by player

2 V. Manuel

1 miss.

3 T. Lourenço

		1/1

6 I. Cateco

0/1		4/4
1/2		
3/3		

1 post 2 miss. 1 block

7 B. Pereira

1/1		0/1

9 E. Kessongo

10 P. Paulino

0/1		
0/1		

11 G. Cassoma

		0/1

13 B. Nunda

		1/1
0/1		1/2
1/4		1/1

1 post

15 L. Costa

1/1		0/1
1/1		1/1

2 miss. 1 block

20 A. Anjos

77 I. Ambrosio

1/2		

90 C. Lussende

	0/1	
1/1		
1/1		

1 miss.

98 M. Alfredo

TOTAL

1/2	0/1	5/6
2/5		1/3
8/13		3/4

2 post 6 miss. 2 block

Saves distribution goalkeepers

12 D. Neto

		0/2
0/1	0/3	0/4

33 E. Domingos

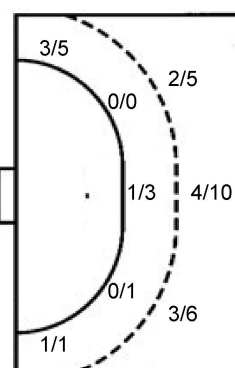
0/2		0/4
0/1	3/3	0/1
0/2	3/3	1/3

TOTAL

0/2		0/6
0/1	3/3	0/1
0/3	3/6	1/7

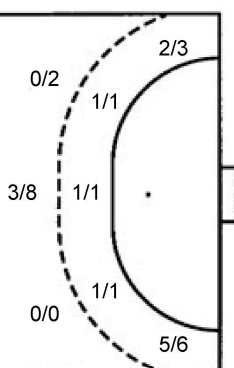
Shots by position

ATTACK



7m penalties	2/5
Fastbreak	1/1
Breakthrough	3/7
Long dist.	0/0

DEFENSE



7m penalties	3/4
Fastbreak	4/5
Breakthrough	4/6
Long dist.	1/2

Shooting statistics

Position	Goals	Sav.	Miss.	Post	Blk.	Total	%
Back (9m)	9	4	5	1	2	21	43
Line (6m)	1	3	0	0	0	4	25
Wing	4	1	1	0	0	6	67
7m penalties	2	3	0	0	0	5	40
Fastbreak	1	0	0	0	0	1	100
Breakthrough	3	3	0	1	0	7	43
Total	20	14	6	2	2	44	45

Jersey number Tot. Total shooting 6m 6m (line) shooting 9m 9m shooting Wng Wing shooting FB Fastbreak sh. 7m 7m penalty sh.
 Brk. Breakthrough sh. LD Long distance sh. As. Assists PC Pass clear chance E7 Earned 7m pen. TF Technical faults St. Steals
 2m 2m punishments C7. Committed 7m E2 Earned 2m pun. YC. Yellow cards R/B Red/Blue cards Blk. Blocks S Starting Line-up

