



25th IHF Women's Junior World Championship 2026



Main Round - Group IV, 1. round

Match Team Statistics

Match No. 64

Japan 25 - 32 Hungary

(13 - 15) (12 - 17)

29.6.2026. 18:30

Attendance: 235

Jinzhong University

Gymnasium

Referees: German Araujo (URU) / Nicolas Perdomo (URU)

Japan

Players		Goals / shots									Attack				Def.			Penalties				TP			
#	Surname and name	S	Tot.	%	9m	6m	Wing	7m	FB	Brk.	LD	As.	PC	E7	E2	TF	St.	C7	Bik	YC	2m		R	B	
4	JINNO Airi	S	2/4	50			2/3		0/1								2								48:09
5	INAYOSHI Ririko																								1:15
6	SAMO Haruhi		6/8	75	1/2			5/6					2			1									9:38
7	HONDA Cocona																								0:24
10	MATSUMOTO Yume	S	1/3	33		1/1				0/2		3		2		2		1							37:45
12	OSAKI Hana	S																							47:39
13	IKEDA Futaba		2/4	50	0/1			1/1		1/2		2		1											24:35
14	NAKAMURA Mami		1/1	100		1/1						4									1				28:49
15	KITA Wakana	S	4/7	57	0/2					4/5		1	3	1		4		1							27:11
17	ABE Kaede																								22:20
18	KIO Jurina	S	2/4	50			2/4							1		1									44:36
20	ARAKAKI Hisaki																								14:13
21	SUGIMOTO Mizuki																								7:02
23	NAKAO Ai	S	3/4	75	0/1	2/2				1/1						4									46:46
25	KATO Mao	S	3/3	100		2/2			1/1				1	1	1			2							46:25
27	SAITO Shiho		1/1	100					1/1							1									13:10
	Team / bench															1									
	TOTAL		25/39	64	1/6	6/6	4/7	6/7	2/3	6/10	0/0	12	4	7	1	16	0	4	0	0	1	0	0		

Goalkeepers		Saves / shots								
#	Surname and name	Tot.	%	9m	6m	Wing	7m	FB	Brk.	LD
12	OSAKI Hana	7/32	22	2/5	0/7	1/3	1/3	1/4	2/10	
21	SUGIMOTO Mizuki	1/8	13	0/2	0/2	1/1	0/1		0/2	
	TOTAL	8/40	20	2/7	0/9	2/4	1/4	1/4	2/12	0/0

Coach: Shota Arai

Number of attacks: 55, Efficiency: 45%, Average Duration: 32.69 seconds

Attack by type of defense

	Shots	9m	6m	Wing	TF	E7	E2
On def. 6-0	15/27	1/6	5/5	3/6	15	7	1
On def. 4-2	0/0	0/0	0/0	0/0	1	0	0
Fastbreak	2/3				0	0	0

Defense by type

	Total	9m	6m	Wing	Stl.	C7	2m
Def. 6-0	17/25	4/6	7/7	1/4	0	4	0
Def. 5-1	1/2	1/2	0/0	0/0	0	0	0
Def. 3-3	8/9	0/1	2/2	1/1	0	0	0
Fastbreak	3/4				0	0	1

Attack with superiority / minority / goalkeeper out

	Attack				Reaction		
	Att.	Eff.	Shots	TF	FB	LD	Tot.
7 on 6 (GK out)	16	56%	9/13	3	0/0	0/1	0/1
6 on 6 (GK out)	1	0%	0/0	1	0/0	0/0	0/0
6 on 6	34	41%	14/24	10			
6 on 5	4	50%	2/2	2			

Player superiority / GK out counted at the end of attack (in case it changes during attack)

Defense with superiority / minority / goalkeeper out

	Attack				Reaction		
	Att.	Eff.	Shots	TF	FB	LD	Tot.
7 on 6 (GK out)	2	100%	2/2	0	0/0	0/0	0/0
6 on 6 (GK out)	2	50%	1/1	1	0/0	0/0	0/0
6 on 6	48	56%	27/37	11			
5 on 6	1	100%	1/1	0			
6 on 5	2	50%	1/1	1			

Numbers show attacking numbers of opponent. Lower efficiency of opponent means better defense of this team

Jersey number Tot. Total shooting 6m 6m (line) shooting 9m 9m shooting Wng Wing shooting FB Fastbreak sh. 7m 7m penalty sh.
 Brk. Breakthrough sh. LD Long distance sh. As. Assists PC Pass clear chance E7 Earned 7m pen. TF Technical faults St. Steals
 2m 2m punishments C7. Committed 7m E2 Earned 2m pun. YC. Yellow cards R/B Red/Blue cards Blk. Blocks S Starting Line-up

Handball statistics and livescore by Toma-soft ltd (www.toma-soft.hr)



25th IHF Women's Junior World Championship 2026



Main Round - Group IV, 1. round

Match Team Statistics
Match No. 64

Japan 25 - 32 Hungary
(13 - 15) (12 - 17)

29.6.2026. 18:30
Attendance: 235
Jinzhong University
Gymnasium

Referees: German Araujo (URU) / Nicolas Perdomo (URU)

Hungary

Players		Goals / shots									Attack				Def.			Penalties			TP				
#	Surname and name	S	Tot.	%	9m	6m	Wing	7m	FB	Brk.	LD	As.	PC	E7	E2	TF	St.	C7	Blk	YC		2m	R	B	
7	VADKERTI Luca		2/2	100					1/1	1/1						4	1								13:57
8	FEHÉR Luca																								
16	HORVÁTH Zelda																								1:00
18	SZILÁGYI Diána	S																							28:28
19	FAZEKAS Virág		4/6	67		1/1	0/1	3/4								2									18:06
26	KACSÓ Noémi		0/1	0	0/1																				2:16
41	BALÁZS Bítia	S	2/3	67			2/3										1	1							49:07
49	SZEIBERT Anna Rebeka	S	5/7	71	3/4					2/2	0/1	2	1			2		1			1				44:15
55	VARGA Katalin	S	5/5	100		4/4				1/1		1				2	1	1							51:52
57	KECELI-MÉSZÁROS Renáta	S	6/8	75	0/1	1/1			1/1	4/5		3	1	2		2	1								36:31
66	RÉDECSI Polett	S	2/4	50	1/1		0/1		1/2																55:14
73	SZÁR Evelin		1/1	100		1/1										1									5:34
74	SERES Liza																								
77	KRISTON Kíra	S	5/7	71	1/1	2/2				2/4		4		2			1	1	1						54:30
78	PÁLMAI Liza		0/1	0	0/1							1	1		1		1	3							29:17
85	MAJOROS Gréta																								29:53
Team / bench																									
TOTAL			32/45	71	5/9	9/9	2/5	3/4	3/4	10/13	0/1	11	3	4	1	13	6	7	1	0	1	0	0		

Goalkeepers		Saves / shots								
#	Surname and name	Tot.	%	9m	6m	Wing	7m	FB	Brk.	LD
16	HORVÁTH Zelda	0/3	0				0/3			
18	SZILÁGYI Diána	4/16	25	1/1	0/3	3/5	0/1	0/1	0/5	
85	MAJOROS Gréta	4/14	29	2/3	0/3	0/2	0/2	0/1	2/3	
TOTAL		8/33	24	3/4	0/6	3/7	0/6	1/2	2/8	0/0

Coach: **Beáta Bohus**

Number of attacks: 55, Efficiency: 58%, Average Duration: 32.56 seconds

Attack by type of defense

	Shots	9m	6m	Wing	TF	E7	E2
On def. 6-0	17/25	4/6	7/7	1/4	11	4	0
On def. 5-1	1/2	1/2	0/0	0/0	0	0	1
On def. 3-3	8/9	0/1	2/2	1/1	2	0	0
Fastbreak	3/4				0	0	0

Defense by type

	Total	9m	6m	Wing	Stl.	C7	2m
Def. 6-0	15/27	1/6	5/5	3/6	6	7	0
Fastbreak	2/3				0	0	1

Attack with superiority / minority / goalkeeper out

	Attack				Reaction		
	Att.	Eff.	Shots	TF	FB	LD	Tot.
7 on 6 (GK out)	2	100%	2/2	0	0/0	0/0	0/0
6 on 6 (GK out)	2	50%	1/1	1	0/0	0/0	0/0
6 on 6	48	56%	27/37	11			
5 on 6	1	100%	1/1	0			
6 on 5	2	50%	1/1	1			

Player superiority / GK out counted at the end of attack (in case it changes during attack)

Defense with superiority / minority / goalkeeper out

	Attack				Reaction		
	Att.	Eff.	Shots	TF	FB	LD	Tot.
7 on 6 (GK out)	16	56%	9/13	3	0/0	0/1	0/1
6 on 6 (GK out)	1	0%	0/0	1	0/0	0/0	0/0
6 on 6	34	41%	14/24	10			
6 on 5	4	50%	2/2	2			

Numbers show attacking numbers of opponent. Lower efficiency of opponent means better defense of this team

Jersey number Tot. Total shooting 6m 6m (line) shooting 9m 9m shooting Wng Wing shooting FB Fastbreak sh. 7m 7m penalty sh.
Brk. Breakthrough sh. LD Long distance sh. As. Assists PC Pass clear chance E7 Earned 7m pen. TF Technical faults St. Steals
2m 2m punishments C7. Committed 7m E2 Earned 2m pun. YC. Yellow cards R/B Red/Blue cards Blk. Blocks S Starting Line-up



25th IHF Women's Junior World Championship 2026



Main Round - Group IV, 1. round

Match Team Statistics

Match No. 64

Japan 25 - 32 Hungary

(13 - 15) (12 - 17)

29.6.2026. 18:30

Attendance: 235

Jinzhong University

Gymnasium

Referees: German Araujo (URU) / Nicolas Perdomo (URU)

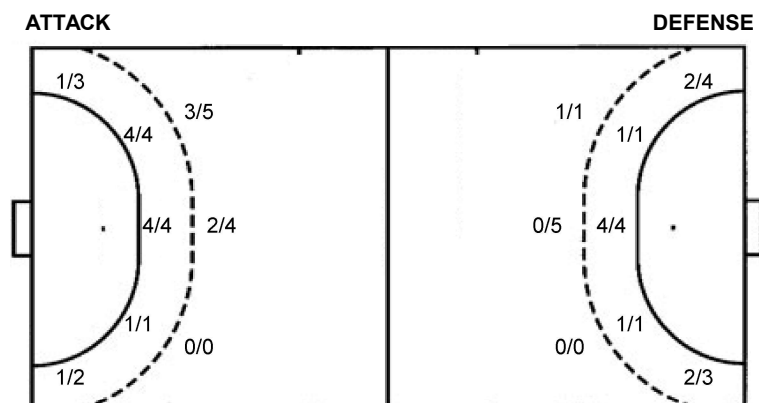
Shot distribution by player

7 L. Vadkerti	8 L. Fehér	19 V. Fazekas	26 N. Kacsó	41 B. Balázs	49 A. Szeibert	55 K. Varga
1/1				1/1	1/1	1/1
				1/1		1/1
1/1		0/1	4/5	0/1	2/2	2/2
				1 post	1 post 1 miss.	
57 R. Keceli-Mészáros	66 P. Rédecsi	73 E. Szár	74 L. Seres	77 K. Kriston	78 L. Pálmai	TOTAL
1/1	0/1					5/6
				1/1		1/1
				1/1	0/1	4/4
1/2	2/2	1/1		2/2		2/3
1 post				1 miss.		2/3
						7/9
						0/2
						11/12
						3 post 2 miss.

Saves distribution goalkeepers

16 Z. Horváth	18 D. Szilágyi	85 G. Majoros	TOTAL
	0/3	1/3	1/6
	1/1	0/1	1/1
	1/1	1/3	1/1
0/1	1/7	1/3	2/11
0/2	1/1	0/3	2/2
	0/3	0/8	0/8

Shots by position



7m penalties 3/4
Fastbreak 3/4
Breakthrough 10/13
Long dist. 0/1

7m penalties 6/7
Fastbreak 2/3
Breakthrough 6/10
Long dist. 0/0

Shooting statistics

Position	Goals	Sav.	Miss.	Post	Blk.	Total	%
Back (9m)	5	2	0	2	0	9	56
Line (6m)	9	0	0	0	0	9	100
Wing	2	2	0	1	0	5	40
7m penalties	3	1	0	0	0	4	75
Fastbreak	3	1	0	0	0	4	75
Breakthrough	10	2	1	0	0	13	77
Total	32	8	1	3	0	44	73

Jersey number Tot. Total shooting 6m 6m (line) shooting 9m 9m shooting Wng Wing shooting FB Fastbreak sh. 7m 7m penalty sh.
Brk. Breakthrough sh. LD Long distance sh. As. Assists PC Pass clear chance E7 Earned 7m pen. TF Technical faults St. Steals
2m 2m punishments C7. Committed 7m E2 Earned 2m pun. YC. Yellow cards R/B Red/Blue cards Blk. Blocks S Starting Line-up

Handball statistics and livescore by Toma-soft ltd (www.toma-soft.hr)

