





# 25th IHF Women's Junior World Championship 2026



Main Round - Group III, 1. round

Match Team Statistics

Match No. 59

## Denmark 40 - 18 Czechia

(15 - 8) (25 - 10)

29.6.2026. 16:15

Attendance: 1100

Jinzhong City Gymnasium

Referees: Raul Oyarzun Aylagas (ESP) / Aritz Zaragueta (ESP)

### Shot distribution by player

2 C. Antivakis

1/1		

1 post

3 J. Andersen

	0/1	

5 T. Ulrichsen

		0/1

6 E. Sibanda

		1/2
1/1	1/1	

7 K. Hoppe

		1/1
	0/1	1/1
3/3	3/3	4/5

1 post

10 I. Jensen

0/1		

1 miss.

14 L. Lützhoff

1/1		
		2/2

1/1 lob

15 J. Persson

0/1		
		1/1
2/2	1/1	2/2

17 L. Martens

2/2		

18 E. Rasmussen

1/1		
2/2		

22 J. Johansen

		1/1
		0/1
3/3		

1 miss.

24 C. Norskov

		1/1
	0/1	1/2
1/1	0/1	

29 E. Bodker

1/2		
1/1		

TOTAL

4/6		4/5
	0/3	3/6
15/16	5/6	8/9

2 post 2 miss. 1/1 lob

### Saves distribution goalkeepers

12 M. Koerth


16 F. Nielsen

1/2		2/3
2/3	2/2	1/5
1/3	1/2	2/5

20 F. Solling Fager

		0/1
	1/1	1/3
		1/2

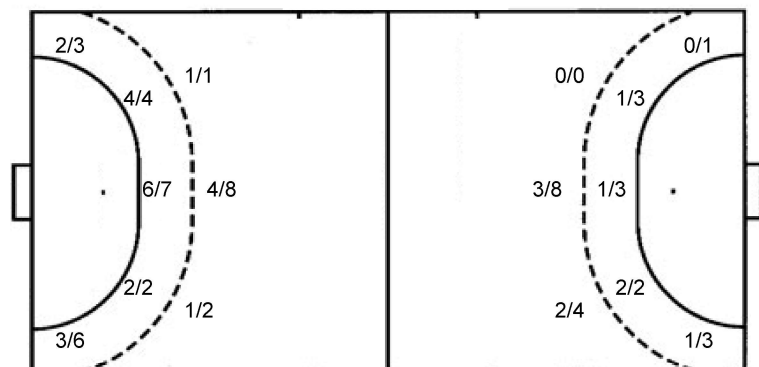
TOTAL

1/2		2/4
2/3	3/3	2/8
1/3	1/2	3/7

### Shots by position

ATTACK

DEFENSE



7m penalties 4/4  
 Fastbreak 5/5  
 Breakthrough 8/14  
 Long dist. 0/0

7m penalties 1/2  
 Fastbreak 0/0  
 Breakthrough 6/12  
 Long dist. 1/1

### Shooting statistics

Position	Goals	Sav.	Miss.	Post	Blk.	Total	%
Back (9m)	6	5	0	0	0	11	55
Line (6m)	12	1	0	0	0	13	92
Wing	5	2	1	1	0	9	56
7m penalties	4	0	0	0	0	4	100
Fastbreak	5	0	0	0	0	5	100
Breakthrough	8	4	1	1	0	14	57
<b>Total</b>	<b>40</b>	<b>12</b>	<b>2</b>	<b>2</b>	<b>0</b>	<b>56</b>	<b>71</b>

# Jersey number Tot. Total shooting 6m 6m (line) shooting 9m 9m shooting Wng Wing shooting FB Fastbreak sh. 7m 7m penalty sh.  
 Brk. Breakthrough sh. LD Long distance sh. As. Assists PC Pass clear chance E7 Earned 7m pen. TF Technical faults St. Steals  
 2m 2m punishments C7. Committed 7m E2 Earned 2m pun. YC. Yellow cards R/B Red/Blue cards Blk. Blocks S Starting Line-up

Handball statistics and livescore by Toma-soft ltd (www.toma-soft.hr)



# 25th IHF Women's Junior World Championship 2026



Main Round - Group III, 1. round

Match Team Statistics  
Match No. 59

**Denmark 40 - 18 Czechia**  
(15 - 8) (25 - 10)

29.6.2026. 16:15  
Attendance: 1100  
Jinzhong City Gymnasium

Referees: Raul Oyarzun Aylagas (ESP) / Aritz Zaragueta (ESP)

## Czechia

#	Surname and name	S	Goals / shots								Attack					Def.			Penalties			TP				
			Tot.	%	9m	6m	Wing	7m	FB	Brk.	LD	As.	PC	E7	E2	TF	St.	C7	Blk	YC	2m		R	B		
2	KRAPKOVA Michaela	S	0/2	0		0/1	0/1																	10:45		
5	RAMPOVA Claudia		1/2	50		1/1					0/1													49:20		
6	PAZDEROVA Tereza		1/4	25			0/2				1/2				1									33:42		
7	VRBKOVA Viktorie		2/2	100	1/1						1/1				1							5		21:03		
9	CHALOUPKOVA Anna		0/1	0				0/1																5:45		
10	MATEJKOVA Regina	S	2/5	40	0/1						2/4				1		1					3	1	32:17		
11	HOLENAKOVA Melisa	S	0/1	0	0/1										1	1	1					1	1	32:23		
12	CHVATALOVA Adela																							25:43		
13	PEJSOVA Viktorie	S	1/4	25	0/3	1/1											5	1					1	31:11		
19	POSPISILOVA Tereza		2/3	67		2/3												1					1	31:49		
20	BABOROVSKA Natálie																2							4:33		
21	POLANKOVA Markéta	S	2/3	67	1/2		1/1																	26:04		
22	FILIPKOVA Tereza		5/6	83	3/3			1/1			1/2				1		2	3				1		34:36		
25	KNEDLOVA Viktorie	S	0/2	0		0/2												1						42:18		
26	CHODOUNSKA Anna		2/4	50	0/1						1/2	1/1			1			1						5:41		
27	BUCHTOVA Andrea	S																						32:50		
	Team / bench																									
	TOTAL		18/39	46	5/12	4/8	1/4	1/2	0/0	6/12	1/1				3	4	2	2	21	1	4	0	0	2	0	0

#	Surname and name	Saves / shots								
		Tot.	%	9m	6m	Wing	7m	FB	Brk.	LD
12	CHVATALOVA Adela	8/27	30	3/5	1/7	1/3	0/2	0/2	3/8	
27	BUCHTOVA Andrea	4/25	16	2/6	0/6	1/4	0/2	0/3	1/4	
	TOTAL	12/52	23	5/11	1/13	2/7	0/4	0/5	4/12	0/0

Coach: Dušan Poloz

Number of attacks: 59, Efficiency: 31%, Average Duration: 28.80 seconds

### Attack by type of defense

	Shots	9m	6m	Wing	TF	E7	E2
On def. 6-0	16/35	5/12	4/7	1/4	21	2	2
Fastbreak	0/0				0	0	0

### Defense by type

	Total	9m	6m	Wing	Stl.	C7	2m
Def. 6-0	31/47	6/11	12/13	5/9	1	4	0
Fastbreak	5/5				0	0	2

### Attack with superiority / minority / goalkeeper out

	Attack				Reaction		
	Att.	Eff.	Shots	TF	FB	LD	Tot.
7 on 6 (GK out)	1	100%	1/1	0	0/0	0/0	0/0
6 on 6 (GK out)	3	0%	0/1	2	0/0	0/0	0/0
6 on 6	51	27%	14/33	18			
6 on 5	4	75%	3/3	1			

Player superiority / GK out counted at the end of attack (in case it changes during attack)

### Defense with superiority / minority / goalkeeper out

	Attack				Reaction		
	Att.	Eff.	Shots	TF	FB	LD	Tot.
7 on 6 (GK out)	10	40%	4/9	1	0/0	0/0	0/0
6 on 6 (GK out)	2	50%	1/2	0	0/0	0/0	0/0
6 on 6	42	79%	33/37	5			
6 on 5	4	50%	2/3	1			

Numbers show attacking numbers of opponent. Lower efficiency of opponent means better defense of this team

# Jersey number Tot. Total shooting 6m 6m (line) shooting 9m 9m shooting Wng Wing shooting FB Fastbreak sh. 7m 7m penalty sh.  
Brk. Breakthrough sh. LD Long distance sh. As. Assists PC Pass clear chance E7 Earned 7m pen. TF Technical faults St. Steals  
2m 2m punishments C7. Committed 7m E2 Earned 2m pun. YC. Yellow cards R/B Red/Blue cards Blk. Blocks S Starting Line-up

Handball statistics and livescore by Toma-soft ltd (www.toma-soft.hr)



# 25th IHF Women's Junior World Championship 2026



Main Round - Group III, 1. round

## Match Team Statistics

Match No. 59

## Denmark 40 - 18 Czechia

(15 - 8) (25 - 10)

29.6.2026. 16:15

Attendance: 1100

Jinzhong City Gymnasium

Referees: Raul Oyarzun Aylagas (ESP) / Aritz Zaragueta (ESP)

### Shot distribution by player

2 M. Krapková

		0/1

1 post

5 C. Rampová

		1/2

6 T. Pazderová

0/1		0/1
	0/1	
1/1		

7 V. Vrbková

		1/1
		1/1

9 A. Chaloupková

0/1		

10 R. Matějková

1/1	0/1	0/1
	1/1	

1 miss.

11 M. Holeňáková

		0/1

13 V. Pejšová

		1/2

2 miss.

19 T. Pospíšilová

	0/1	2/2

20 N. Baborovská


21 M. Polanková

1/1		1/1

1 miss.

22 T. Filipková

	0/1	4/4
		1/1

25 V. Knedlová

0/1		

1 post

26 A. Chodounská

		1/1
		1/2
		0/1

### TOTAL

1/2		3/5
1/3	0/3	6/8
2/3	1/2	4/7

2 post 4 miss.

### Saves distribution goalkeepers

12 A. Chvátalová

1/2		1/5
	1/1	2/2
1/11	1/3	1/3

27 A. Buchtová

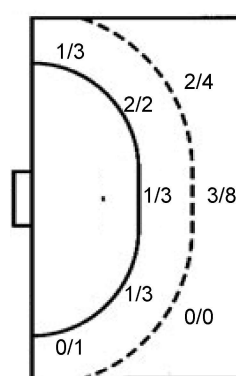
1/4		
	2/2	1/4
0/5	0/3	0/6

### TOTAL

2/6		1/5
	3/3	3/6
1/16	1/6	1/9

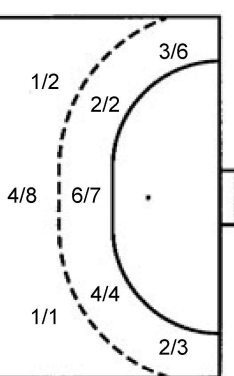
### Shots by position

#### ATTACK



7m penalties 1/2  
Fastbreak 0/0  
Breakthrough 6/12  
Long dist. 1/1

#### DEFENSE



7m penalties 4/4  
Fastbreak 5/5  
Breakthrough 8/14  
Long dist. 0/0

### Shooting statistics

Position	Goals	Sav.	Miss.	Post	Blk.	Total	%
Back (9m)	5	4	3	0	0	12	42
Line (6m)	4	2	0	2	0	8	50
Wing	1	3	0	0	0	4	25
7m penalties	1	1	0	0	0	2	50
Fastbreak	0	0	0	0	0	0	0
Breakthrough	6	5	1	0	0	12	50
<b>Total</b>	<b>17</b>	<b>15</b>	<b>4</b>	<b>2</b>	<b>0</b>	<b>38</b>	<b>45</b>

# Jersey number Tot. Total shooting 6m 6m (line) shooting 9m 9m shooting Wng Wing shooting FB Fastbreak sh. 7m 7m penalty sh.  
Brk. Breakthrough sh. LD Long distance sh. As. Assists PC Pass clear chance E7 Earned 7m pen. TF Technical faults St. Steals  
2m 2m punishments C7. Committed 7m E2 Earned 2m pun. YC. Yellow cards R/B Red/Blue cards Blk. Blocks S Starting Line-up

Handball statistics and livescore by Toma-soft ltd (www.toma-soft.hr)

