



25th IHF Women's Junior World Championship 2026



Main Round - Group II, 1. round

Match Team Statistics
Match No. 56

Spain 32 - 25 Romania
(14 - 15) (18 - 10)

29.6.2026. 18:30
Attendance: 680
Zhongdu Campus
Gymnasium

Referees: Bruna Correa (BRA) / Renata Correa (BRA)

Shot distribution by player

2 A. Ros Quesada

| | | |
|-----|--|--|
| | | |
| | | |
| 1/1 | | |

3 K. Fonkeng Mfotiog

| | | |
|-----|--|-----|
| | | |
| | | |
| 1/1 | | 3/3 |

2 miss.

4 L. Arruabarrena
Gaztanazpi

| | | |
|--|--|--|
| | | |
| | | |
| | | |

6 L. Julve Benages

| | | |
|-----|-----|--|
| | | |
| | | |
| 1/1 | 1/1 | |

1 miss. 1/1 lob

7 B. Rodriguez Lario

| | | |
|-----|-----|-----|
| 1/2 | 0/1 | 1/1 |
| 1/2 | 1/1 | |
| 2/2 | 1/2 | 2/2 |

1 post 2 miss. 1/1 lob

8 K. Jallow Diallo

| | | |
|--|-----|--|
| | 1/1 | |
| | | |
| | | |

9 M. Catalá Mollá

| | | |
|-----|--|-----|
| | | |
| | | |
| 1/1 | | 1/1 |

10 N. Patino Limes

| | | |
|-----|-----|-----|
| | | |
| | | |
| 1/2 | 1/2 | 1/1 |

1 miss. 1 block

11 C. Fidalgo Duran

| | | |
|-----|--|--|
| | | |
| | | |
| 1/2 | | |

1 miss.

13 L. Bomaba Santos

| | | |
|--|--|--|
| | | |
| | | |
| | | |

15 P. Lluch Rico

| | | |
|-----|--|-----|
| | | 1/1 |
| | | |
| 2/2 | | 1/1 |

1 miss. 1/1 lob

18 E. Perez Rodriguez

| | | |
|--|--|-----|
| | | 0/2 |
| | | |
| | | |

19 S. Palanqués
Martorell

| | | |
|-----|--|--|
| 1/1 | | |
| | | |
| | | |

20 L. Rodriguez
Magallon

| | | |
|-----|--|--|
| | | |
| 1/1 | | |
| | | |

TOTAL

| | | |
|-------|-----|-----|
| 2/3 | 1/2 | 2/4 |
| 2/3 | 1/1 | |
| 10/12 | 3/5 | 8/8 |

1 post 8 miss. 1 block 3/3 lob

Saves distribution goalkeepers

1 G. Gassama
Cissokho

| | | |
|-----|-----|-----|
| 1/2 | 2/2 | 0/1 |
| 1/1 | 1/1 | 0/1 |
| 0/5 | 1/7 | 2/9 |

16 U. Bernabe
Cobos

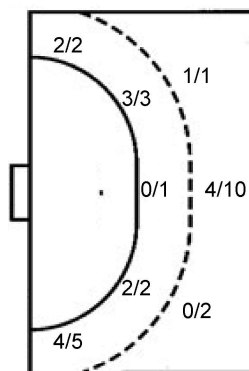
| | | |
|-----|--|-----|
| 0/1 | | |
| | | 0/1 |
| 1/2 | | 0/1 |

TOTAL

| | | |
|-----|-----|------|
| 1/3 | 2/2 | 0/1 |
| 1/1 | 1/1 | 0/2 |
| 1/7 | 1/7 | 2/10 |

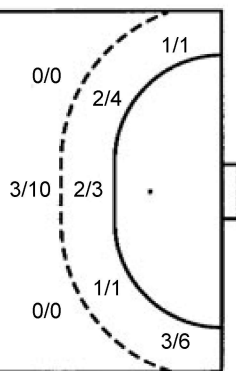
Shots by position

ATTACK



7m penalties 4/5
Fastbreak 0/1
Breakthrough 9/13
Long dist. 3/6

DEFENSE



7m penalties 3/3
Fastbreak 2/3
Breakthrough 8/12
Long dist. 0/0

Shooting statistics

| Position | Goals | Sav. | Miss. | Post | Blk. | Total | % |
|--------------|-----------|----------|----------|----------|----------|-----------|-----------|
| Back (9m) | 5 | 6 | 1 | 0 | 1 | 13 | 38 |
| Line (6m) | 5 | 0 | 1 | 0 | 0 | 6 | 83 |
| Wing | 6 | 0 | 1 | 0 | 0 | 7 | 86 |
| 7m penalties | 4 | 0 | 1 | 0 | 0 | 5 | 80 |
| Fastbreak | 0 | 1 | 0 | 0 | 0 | 1 | 0 |
| Breakthrough | 9 | 2 | 1 | 1 | 0 | 13 | 69 |
| Total | 29 | 9 | 5 | 1 | 1 | 45 | 64 |

Jersey number Tot. Total shooting 6m 6m (line) shooting 9m 9m shooting Wng Wing shooting FB Fastbreak sh. 7m 7m penalty sh.
Brk. Breakthrough sh. LD Long distance sh. As. Assists PC Pass clear chance E7 Earned 7m pen. TF Technical faults St. Steals
2m 2m punishments C7. Committed 7m E2 Earned 2m pun. YC. Yellow cards R/B Red/Blue cards Blk. Blocks S Starting Line-up

Handball statistics and livescore by Toma-soft ltd (www.toma-soft.hr)



25th IHF Women's Junior World Championship 2026



Main Round - Group II, 1. round

Match Team Statistics

Match No. 56

Spain 32 - 25 Romania

(14 - 15) (18 - 10)

29.6.2026. 18:30

Attendance: 680

Zhongdu Campus

Gymnasium

Referees: Bruna Correa (BRA) / Renata Correa (BRA)

Shot distribution by player

| | | | | | | |
|------------------------|----------------------|-------------------|---------------------|----------------------|--------------------|----------------------|
| 2 A. Nită | 4 E. Marton | 5 M. Voicu | 6 D. Mihăilă | 8 T. Damian | 10 G. Tulea | 11 A. Stan |
| 1/1 | | | | | 0/1 | |
| | | | | | | 0/1 |
| 1/1 | | 2/2 | | 1/1 | 1/1 | |
| | 1 miss. | 0/1 | | 1 miss. 1 block | 2 post | |
| 17 A. Serban | 18 B. Vintilă | 20 D. Utan | 22 S. Truscă | 37 I. Hrenaru | 59 R. Rusu | 84 E. Bodijar |
| | | 0/1 | 0/1 | 1/1 | | |
| | | | | | | 0/1 |
| 2/2 | 1/1 | 2/2 | 1/1 | 1/1 | 0/1 | 1/1 |
| 1 post 1 miss. 2 block | | | | | | |

TOTAL

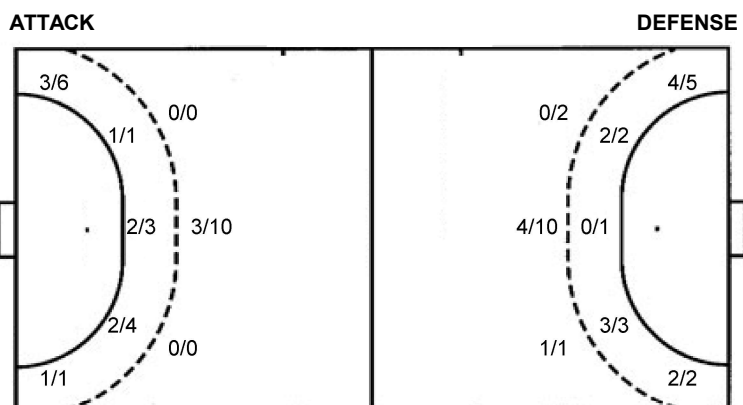
| | | |
|-----|-----|------|
| 2/3 | 0/2 | 1/1 |
| 0/1 | 0/1 | 2/2 |
| 6/7 | 6/7 | 8/10 |

3 post 3 miss. 3 block

Saves distribution goalkeepers

| | | |
|---------------------|-------------------|--------------|
| 1 B. Tunariu | 16 F. Rosu | TOTAL |
| | 1/3 | 1/3 |
| | 1/1 | 1/1 |
| | 2/4 | 2/4 |
| | 1/3 | 1/3 |
| 1/2 | 1/9 | 2/11 |
| 0/1 | 2/3 | 2/4 |
| 0/1 | 0/7 | 0/8 |

Shots by position



7m penalties 3/3
Fastbreak 2/3
Breakthrough 8/12
Long dist. 0/0

7m penalties 4/5
Fastbreak 0/1
Breakthrough 9/13
Long dist. 3/6

Shooting statistics

| Position | Goals | Sav. | Miss. | Post | Blk. | Total | % |
|--------------|-----------|----------|----------|----------|----------|-----------|-----------|
| Back (9m) | 3 | 2 | 1 | 1 | 3 | 10 | 30 |
| Line (6m) | 5 | 3 | 0 | 0 | 0 | 8 | 63 |
| Wing | 4 | 2 | 0 | 1 | 0 | 7 | 57 |
| 7m penalties | 3 | 0 | 0 | 0 | 0 | 3 | 100 |
| Fastbreak | 2 | 0 | 0 | 1 | 0 | 3 | 67 |
| Breakthrough | 8 | 2 | 2 | 0 | 0 | 12 | 67 |
| Total | 25 | 9 | 3 | 3 | 3 | 43 | 58 |

Jersey number Tot. Total shooting 6m 6m (line) shooting 9m 9m shooting Wng Wing shooting FB Fastbreak sh. 7m 7m penalty sh.
Brk. Breakthrough sh. LD Long distance sh. As. Assists PC Pass clear chance E7 Earned 7m pen. TF Technical faults St. Steals
2m 2m punishments C7. Committed 7m E2 Earned 2m pun. YC. Yellow cards R/B Red/Blue cards Blk. Blocks S Starting Line-up



25th IHF Women's Junior World Championship 2026



Main Round - Group II, 1. round

Match Team Statistics

Match No. 56

Spain 32 - 25 Romania

(14 - 15) (18 - 10)

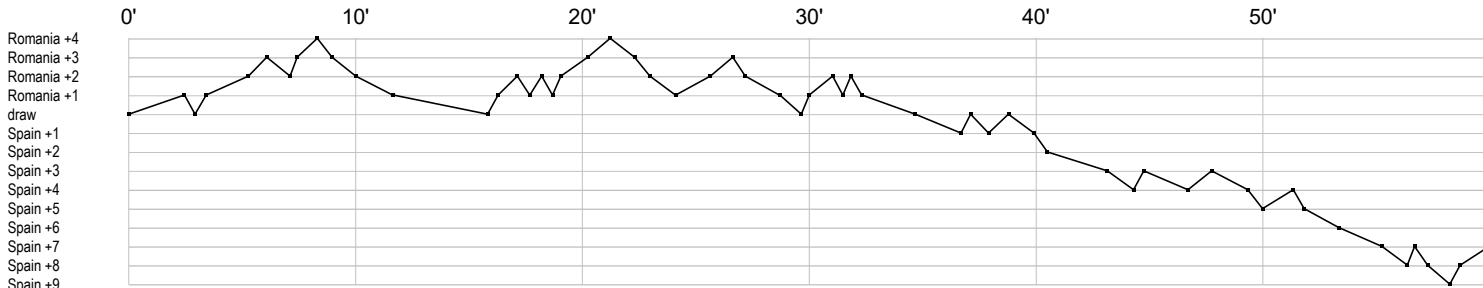
29.6.2026. 18:30

Attendance: 680

Zhongdu Campus

Gymnasium

Referees: Bruna Correa (BRA) / Renata Correa (BRA)



Spain

| | | | | | | | |
|-----------------|---------------|-------------|-----------------|-------|---------|-----------|-------|
| 1 Gassama | r r r r r r s | r r r r r r | s r r s r r r s | r | r | s s r s | r s |
| 2 Ros Quesada | | | | | | | g |
| 3 Fonkeng | x f | g | gbf g i c | | | | g |
| 4 Arruabarrena | | | | | | c2 | |
| 6 Julve | | f | | g | bg | | b i g |
| 7 Rodriguez | f p p a g bt | f f f g | g f g a g g g | g | g | f g t g f | |
| 8 Jallow Diallo | | x x | | | | g | |
| 9 Catalá Mollá | g | g | | t a e | b | | b |
| 10 Patino Limes | f f t f | | g t f g | t e | g t b a | | a a |
| 11 Fidalgo | | e | gi e | | f | bf p | |
| 13 Bomaba | | | | | | | |
| 15 Lluch Rico P | g | | | g b | e g c | gi f g | |
| 16 Bernabe | | | | r | r | | r t |
| 18 Perez | f | | | | | | f |
| 19 Palanqués | g | | | | | | |
| 20 Rodriguez | | g a t | t | | | | |

Romania

| | | | | | | | |
|--------------|-----------------|-------------|-----------------|-----------------|-------|-------------|-------|
| 1 Tunariu B | | | | r r | s r r | | |
| 2 Nită A | p g | c | 2 | | g | | g |
| 4 Marton E | | f | | | | t ei f t 2 | |
| 5 Voicu M | | t | | b | | | t g f |
| 6 Mihăilă D | | | | | | | |
| 8 Damian T | t f a | f t g g | | i a a a t | g | g g t | |
| 10 Tulea G | f | | f f | | g c | e ba | |
| 11 Stan A | | | | 2 | c t | | f |
| 16 Rosu F | s a r s r s r r | r s r s r s | r r r r r r r r | r r r r r r r r | r | r r r r r s | |
| 17 Serban A | x g g | y | f f g a g c t p | f t a | f | t | t |
| 18 Vintilă B | g | | g p a a p | | | | |
| 20 Utan D | g | | g | f | c | f | g |
| 22 Truscă S | | | g g f | | | | |
| 37 Hrenaru I | | | t t g | | e | | |
| 59 Rusu R | | | | | | | a f |
| 84 Bodjar E | g f | | | | | t t2 | |

| | | | | | |
|-------------------|---------------|-------------------|-------------------------|--------------------|-----------------|
| In game | g Goal scored | f Missed shot | a Assist | t Technical faults | b Steal |
| 2 2min suspension | e Earned 7m | c Committed 7m | y Yellow card | r Red Card | k Blue card |
| i Earned 2min. | x Block | 4 4min suspension | p Pass for clear chance | s Saved shot | r Received goal |