



# 25th IHF Women's Junior World Championship 2026



Preliminary Round - Group F, 3. round

Match Team Statistics

## Montenegro 32 - 28 Czechia

27.6.2026. 14:00

Match No. 44

(16 - 11) (16 - 17)

Attendance: 900

Jinzhang City Gymnasium

Referees: Ramesh Thiyagarajah (GER) / Suresh Thiyagarajah (GER)

### Montenegro

Players		Goals / shots										Attack				Def.			Penalties			TP			
#	Surname and name	S	Tot.	%	9m	6m	Wing	7m	FB	Brk.	LD	As.	PC	E7	E2	TF	St.	C7	Blk	YC	2m		R	B	
1	RONCEVIC Teodora	S										1													51:18
2	ANDRIJASEVIC Sanja	S	6/8	75	1/1	1/2	2/3		2/2			1					1								58:58
7	LEKIC Natalija	S	2/3	67	1/1	1/1				0/1		7	2			3	1	1				1			52:47
8	KUZMAN Ksenija																								
9	CEKLIC Maja	S	9/9	100	1/1					8/8		1			2	2									58:09
10	PELICIC Bojana		1/1	100				1/1																	0:22
11	GUBERINIĆ Andela																					1			11:08
13	RAMUSOVIĆ Nina		1/1	100	1/1											1									3:56
14	JOVANOVIĆ Anika																								
16	ZIVKOVIĆ Vanja																								
17	MITROVIĆ Elena	S	4/7	57	3/5					1/2		3	2			3			2			1			43:25
20	GASEVIĆ Ksenija	S	5/6	83		5/6						1						2	2			1			59:50
23	SAVIĆ Ivana		1/4	25	1/3					0/1															17:01
24	GRUJIC Mia	S	3/4	75			3/4							1		1		1							59:05
26	KNEŽEVIĆ Martina		0/1	0	0/1											2		1							3:06
27	ORBOVIĆ Anelina																								
Team / bench																									
TOTAL			32/44	73	8/13	7/9	5/7	1/1	2/2	9/12	0/0	14	4	1	2	12	2	5	4	0	4	0	0		

Goalkeepers		Saves / shots									
#	Surname and name	Tot.	%	9m	6m	Wing	7m	FB	Brk.	LD	
1	RONCEVIĆ Teodora	12/38	32	6/14	2/7	2/4	0/5		2/8		
16	ZIVKOVIĆ Vanja										
TOTAL		12/38	32	6/14	2/7	2/4	0/5	0/0	2/8	0/0	

Coach: Igor Marković

Number of attacks: 56, Efficiency: 57%, Average Duration: 32.80 seconds

### Attack by type of defense

	Shots	9m	6m	Wing	TF	E7	E2
On def. 6-0	27/39	7/12	6/8	5/7	12	1	2
Fastbreak	2/2				0	0	0

### Defense by type

	Total	9m	6m	Wing	Stl.	C7	2m
Def. 6-0	22/45	9/21	5/8	2/7	2	5	0
Fastbreak	0/0				0	0	4

### Attack with superiority / minority / goalkeeper out

	Attack				Reaction		
	Att.	Eff.	Shots	TF	FB	LD	Tot.
7 on 6 (GK out)	18	44%	8/11	7	0/0	1/1	1/1
6 on 6 (GK out)	4	50%	2/3	1	0/0	0/0	0/0
6 on 6	31	65%	20/27	4			
6 on 5	3	67%	2/3	0			

Player superiority / GK out counted at the end of attack (in case it changes during attack)

### Defense with superiority / minority / goalkeeper out

	Attack				Reaction		
	Att.	Eff.	Shots	TF	FB	LD	Tot.
7 on 6 (GK out)	1	0%	0/1	0	0/0	0/0	0/0
6 on 6 (GK out)	2	50%	1/1	1	1/1	0/0	1/1
6 on 6	45	49%	22/39	6			
5 on 6	1	0%	0/1	0			
6 on 5	8	63%	5/8	0			

Numbers show attacking numbers of opponent. Lower efficiency of opponent means better defense of this team

# Jersey number Tot. Total shooting 6m 6m (line) shooting 9m 9m shooting Wng Wing shooting FB Fastbreak sh. 7m 7m penalty sh.  
 Brk. Breakthrough sh. LD Long distance sh. As. Assists PC Pass clear chance E7 Earned 7m pen. TF Technical faults St. Steals  
 2m 2m punishments C7. Committed 7m E2 Earned 2m pun. YC. Yellow cards R/B Red/Blue cards Blk. Blocks S Starting Line-up



# 25th IHF Women's Junior World Championship 2026



Preliminary Round - Group F, 3. round

Match Team Statistics

Match No. 44

## Montenegro 32 - 28 Czechia

(16 - 11) (16 - 17)

27.6.2026. 14:00

Attendance: 900

Jinzhong City Gymnasium

Referees: Ramesh Thiyagarajah (GER) / Suresh Thiyagarajah (GER)

### Shot distribution by player

2 S. Andrijasević

1/1	1/1	2/2
2/2	0/1	

1 miss.

7 N. Lekić

	0/1	
		2/2

8 K. Kuzman


9 M. Ceklic

	1/1	1/1
1/1	2/2	4/4

10 B. Pelicić

1/1		

11 A. Guberinić


13 N. Ramusović

1/1		

14 A. Jovanović


17 E. Mitrović

		1/1
1/1		1/1
1/1		

1 post 1 miss. 1 block

20 K. Gasević

0/1		1/1
4/4		

23 I. Savić

	1/2	

1 post 1 block

24 M. Grujic

	0/1	
2/2		1/1

26 M. Knežević


1 miss.

27 A. Orbović


### TOTAL

1/1	1/2	3/3
4/5	2/4	4/4
9/9	2/3	6/6

2 post 3 miss. 2 block

### Saves distribution goalkeepers

1 T. Roncević

2/4		2/4
3/7	1/1	1/3
2/8	1/4	0/7

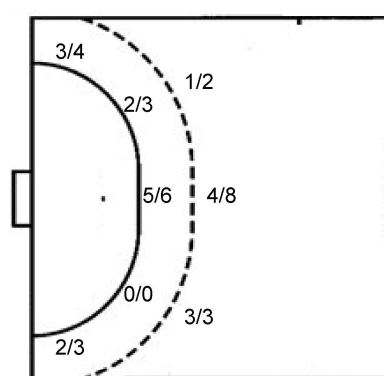
16 V. Zivković


TOTAL

2/4		2/4
3/7	1/1	1/3
2/8	1/4	0/7

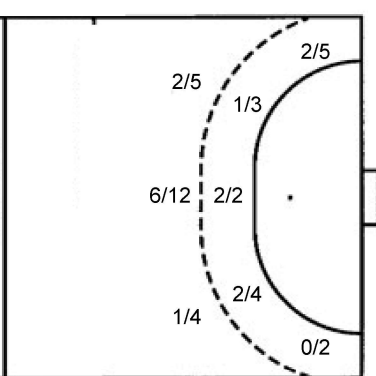
### Shots by position

ATTACK



7m penalties 1/1  
Fastbreak 2/2  
Breakthrough 9/12  
Long dist. 0/0

DEFENSE



7m penalties 5/5  
Fastbreak 0/0  
Breakthrough 6/9  
Long dist. 1/1

### Shooting statistics

Position	Goals	Sav.	Miss.	Post	Blk.	Total	%
Back (9m)	8	0	2	1	2	13	62
Line (6m)	7	2	0	0	0	9	78
Wing	5	1	1	0	0	7	71
7m penalties	1	0	0	0	0	1	100
Fastbreak	2	0	0	0	0	2	100
Breakthrough	9	2	0	1	0	12	75
<b>Total</b>	<b>32</b>	<b>5</b>	<b>3</b>	<b>2</b>	<b>2</b>	<b>44</b>	<b>73</b>

# Jersey number Tot. Total shooting 6m 6m (line) shooting 9m 9m shooting Wng Wing shooting FB Fastbreak sh. 7m 7m penalty sh.  
Brk. Breakthrough sh. LD Long distance sh. As. Assists PC Pass clear chance E7 Earned 7m pen. TF Technical faults St. Steals  
2m 2m punishments C7. Committed 7m E2 Earned 2m pun. YC. Yellow cards R/B Red/Blue cards Blk. Blocks S Starting Line-up

Handball statistics and livescore by Toma-soft ltd (www.toma-soft.hr)





# 25th IHF Women's Junior World Championship 2026



Preliminary Round - Group F, 3. round

## Match Team Statistics

Match No. 44

## Montenegro 32 - 28 Czechia

(16 - 11) (16 - 17)

27.6.2026. 14:00

Attendance: 900

Jinzhong City Gymnasium

Referees: Ramesh Thiyagarajah (GER) / Suresh Thiyagarajah (GER)

### Shot distribution by player

#### 2 M. Krapková

	0/1	

#### 5 C. Rampová

1/1		
		1/1

2 miss.

#### 6 T. Pazderová

1/2		
1/3		

#### 7 V. Vrbková


#### 9 A. Chaloupková

1/1		
		2/2
1/1		1/1

1 post

#### 10 R. Matějková

		1/1
0/1	1/1	

#### 11 M. Holeňáková

		0/1
0/1		
1/1	1/1	

#### 13 V. Pejšová

0/1		1/2
1/1		0/1
3/3	1/1	1/1

1 post 1 miss. 3 block

#### 19 T. Pospišilová

		1/1

1 post

#### 20 N. Baborovská


#### 21 M. Polanková


1 miss.

#### 22 T. Filipková

1/1	0/1	
2/3	1/1	3/3

1 miss. 1 block

#### 25 V. Knedlová


#### 26 A. Chodounská


### TOTAL

2/4		2/4
4/7	0/1	2/3
7/9	4/5	7/7

3 post 5 miss. 4 block

### Saves distribution goalkeepers

#### 12 A. Chvátalová

	1/2	
0/1	1/2	0/2
0/4	1/2	0/3

#### 27 A. Buchtová

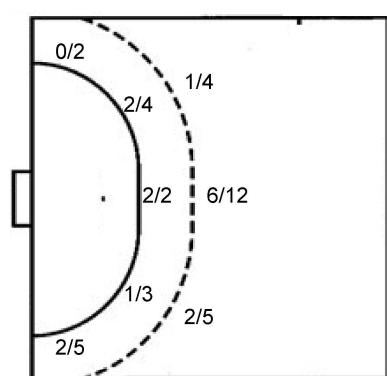
0/1		0/3
1/4	1/2	0/2
0/5	0/1	0/3

#### TOTAL

0/1	1/2	0/3
1/5	2/4	0/4
0/9	1/3	0/6

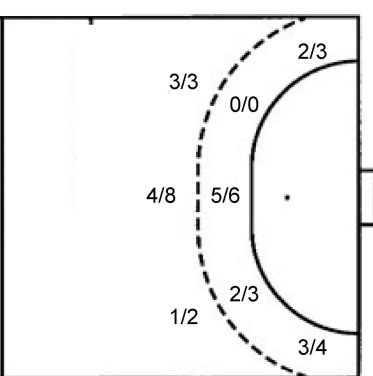
### Shots by position

#### ATTACK



7m penalties 5/5  
Fastbreak 0/0  
Breakthrough 6/9  
Long dist. 1/1

#### DEFENSE



7m penalties 1/1  
Fastbreak 2/2  
Breakthrough 9/12  
Long dist. 0/0

### Shooting statistics

Position	Goals	Sav.	Miss.	Post	Blk.	Total	%
Back (9m)	9	6	2	0	4	21	43
Line (6m)	5	2	0	2	0	9	56
Wing	2	2	3	0	0	7	29
7m penalties	5	0	0	0	0	5	100
Fastbreak	0	0	0	0	0	0	0
Breakthrough	6	2	0	1	0	9	67
<b>Total</b>	<b>27</b>	<b>12</b>	<b>5</b>	<b>3</b>	<b>4</b>	<b>51</b>	<b>53</b>

# Jersey number Tot. Total shooting 6m 6m (line) shooting 9m 9m shooting Wng Wing shooting FB Fastbreak sh. 7m 7m penalty sh.  
Brk. Breakthrough sh. LD Long distance sh. As. Assists PC Pass clear chance E7 Earned 7m pen. TF Technical faults St. Steals  
2m 2m punishments C7. Committed 7m E2 Earned 2m pun. YC. Yellow cards R/B Red/Blue cards Blk. Blocks S Starting Line-up

Handball statistics and livescore by Toma-soft ltd (www.toma-soft.hr)

