



25th IHF Women's Junior World Championship 2026



Preliminary Round - Group E, 3. round

Match Team Statistics

Denmark 42 - 25 P.R. of China

27.6.2026. 18:30

Match No. 42

(23 - 13) (19 - 12)

Attendance: 3900

Jinzhong City Gymnasium

Referees: Kristof Altmar (HUN) / Marton Horvath (HUN)

Denmark

#	Surname and name	S	Goals / shots									Attack				Def.			Penalties				TP						
			Tot.	%	9m	6m	Wing	7m	FB	Brk.	LD	As.	PC	E7	E2	TF	St.	C7	Blk	YC	2m	R		B					
2	ANTIVAKIS Cecillie Wiking	S	3/6	50			2/5			1/1								1										37:06	
3	ANDERSEN Johanne Lasthein		2/2	100			2/2											1										20:10	
5	ULRICHSEN Tilde Nygaard													1														20:25	
6	SIBANDA Emilia Arroe		3/3	100		1/1				1/1			1/1					5	1	1								46:26	
7	HOPPE Kirstine Emilie	S	10/11	91	2/2			2/3	2/2	4/4				3	1			2	1	1								34:34	
10	JENSEN Isabella		2/5	40	0/1	0/1								1	2			1										13:20	
12	KOERTH Maria Liv Dahl																											11:33	
14	LÜTZHOFT Lina Thorstein	S	3/4	75		1/1				1/1			1/2			2				1	1	1			1			43:58	
15	PERSSON Julie Groth	S	1/1	100										4	1	1	1	1										37:20	
16	NIELSEN Freja Fonseca	S												4	1													42:16	
17	MARTENS Laura Duevang		1/1	100		1/1																						14:22	
18	RASMUSSEN Emma Hoirup		1/3	33			1/2			0/1										1								21:47	
20	SOLLING FAGER Freja																												
22	JOHANSEN Julie Boendorf	S	6/7	86		1/1	3/4			1/1	1/1														1			40:25	
24	NORSKOV Cecilie Frydendahl	S	8/8	100	1/1	1/1		1/1	1/1	3/3	1/1			3				2	1									30:02	
29	BODKER Emilie Lolk		2/2	100				1/1		1/1					1	1	1	2										5:48	
Team / bench																													
TOTAL			42/53	79	3/4	5/6	8/13	4/5	7/8	12/12	3/5	16	6	5	3	8	8	6	2	0	2	0	0						

#	Surname and name	Saves / shots								
		Tot.	%	9m	6m	Wing	7m	FB	Brk.	LD
12	KOERTH Maria Liv Dahl	2/9	22	0/1	0/2	1/2			1/4	
16	NIELSEN Freja Fonseca	9/27	33	2/2	1/9	2/4	1/6	1/2	2/4	
20	SOLLING FAGER Freja									
TOTAL		11/36	31	2/3	1/11	3/6	1/6	1/2	3/8	0/0

Coach: Ole Lund Bitsch

Number of attacks: 59, Efficiency: 71%, Average Duration: 29.41 seconds

Attack by type of defense

	Shots	9m	6m	Wing	TF	E7	E2
On def. 6-0	12/13	3/3	2/2	3/4	1	3	1
On def. 5-1	14/20	0/1	2/3	4/8	7	2	2
Fastbreak	7/8				0	0	0

Defense by type

	Total	9m	6m	Wing	Stl.	C7	2m
Def. 6-0	17/34	1/8	8/9	3/6	8	6	0
Fastbreak	1/2				0	0	2

Attack with superiority / minority / goalkeeper out

	Attack				Reaction		
	Att.	Eff.	Shots	TF	FB	LD	Tot.
7 on 6 (GK out)	14	79%	11/13	1	0/1	0/0	0/1
7 on 5 (GK out)	2	50%	1/2	0	0/0	0/0	0/0
6 on 6 (GK out)	1	100%	1/1	0	0/0	0/0	0/0
6 on 5 (GK out)	1	100%	1/1	0	0/0	0/0	0/0
6 on 6	38	68%	26/31	7			
6 on 5	2	100%	2/2	0			
5 on 6	1	0%	0/1	0			

Player superiority / GK out counted at the end of attack (in case it changes during attack)

Defense with superiority / minority / goalkeeper out

	Attack				Reaction		
	Att.	Eff.	Shots	TF	FB	LD	Tot.
7 on 6 (GK out)	22	32%	7/13	9	2/2	3/3	5/5
6 on 6 (GK out)	2	100%	2/2	0	0/0	0/1	0/1
6 on 6	30	50%	15/23	7			
7 on 5 (GK out)	2	0%	0/1	1	0/0	0/1	0/1
6 on 5 (GK out)	1	0%	0/0	1	0/0	0/0	0/0
6 on 5	2	50%	1/2	0			

Numbers show attacking numbers of opponent. Lower efficiency of opponent means better defense of this team

Jersey number Tot. Total shooting 6m 6m (line) shooting 9m 9m shooting Wng Wing shooting FB Fastbreak sh. 7m 7m penalty sh.
 Brk. Breakthrough sh. LD Long distance sh. As. Assists PC Pass clear chance E7 Earned 7m pen. TF Technical faults St. Steals
 2m 2m punishments C7. Committed 7m E2 Earned 2m pun. YC. Yellow cards R/B Red/Blue cards Blk. Blocks S Starting Line-up



25th IHF Women's Junior World Championship 2026



Preliminary Round - Group E, 3. round

Match Team Statistics

Match No. 42

Denmark 42 - 25 P.R. of China

(23 - 13) (19 - 12)

27.6.2026. 18:30

Attendance: 3900

Jinzhong City Gymnasium

Referees: Kristof Altmar (HUN) / Marton Horvath (HUN)

Shot distribution by player

2 C. Antivakis

1/1		
	0/1	1/1
		1/1

2 miss.

3 J. Andersen

1/1		
1/1		

5 T. Ulrichsen

6 E. Sibanda

1/1		
1/1	1/1	

7 K. Hoppe

3/3		1/2
4/4		2/2

10 I. Jensen

	1/1	
		1/1
0/1		0/1

1 miss.

14 L. Lützhof

	1/1	2/2

1 miss.

15 J. Persson

	1/1	

17 L. Martens

	1/1	

18 E. Rasmussen

1/1		0/1

1 miss.

22 J. Johansen

1/1	1/1	1/1
2/2	1/1	0/1

24 C. Norskov

		2/2
		2/2
1/1		3/3

29 E. Bodker

		1/1
1/1		

TOTAL

2/2	2/2	4/4
5/5	0/1	5/6
11/12	5/5	8/11

5 miss.

Saves distribution goalkeepers

12 M. Koerth

0/1		
2/5	0/1	0/2

16 F. Nielsen

	0/1	1/5
4/6	3/4	1/4
0/4	0/1	0/1

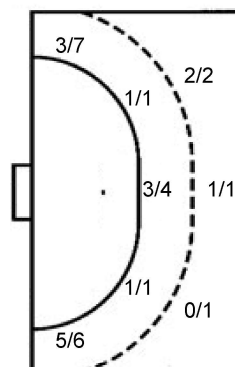
20 F. Solling Fager

TOTAL

	0/1	1/5
4/7	3/4	1/4
2/9	0/2	0/3

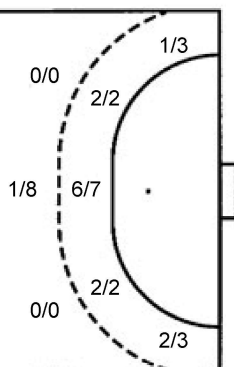
Shots by position

ATTACK



7m penalties 4/5
Fastbreak 7/8
Breakthrough 12/12
Long dist. 3/5

DEFENSE



7m penalties 5/6
Fastbreak 1/2
Breakthrough 5/11
Long dist. 0/0

Shooting statistics

Position	Goals	Sav.	Miss.	Post	Blk.	Total	%
Back (9m)	3	1	0	0	0	4	75
Line (6m)	5	1	0	0	0	6	83
Wing	8	2	3	0	0	13	62
7m penalties	4	1	0	0	0	5	80
Fastbreak	7	1	0	0	0	8	88
Breakthrough	12	0	0	0	0	12	100
Total	39	6	3	0	0	48	81

Jersey number Tot. Total shooting 6m 6m (line) shooting 9m 9m shooting Wng Wing shooting FB Fastbreak sh. 7m 7m penalty sh.
Brk. Breakthrough sh. LD Long distance sh. As. Assists PC Pass clear chance E7 Earned 7m pen. TF Technical faults St. Steals
2m 2m punishments C7. Committed 7m E2 Earned 2m pun. YC. Yellow cards R/B Red/Blue cards Blk. Blocks S Starting Line-up

Handball statistics and livescore by Toma-soft ltd (www.toma-soft.hr)



25th IHF Women's Junior World Championship 2026



Preliminary Round - Group E, 3. round

Match Team Statistics
Match No. 42

Denmark 42 - 25 P.R. of China
(23 - 13) (19 - 12)

27.6.2026. 18:30
Attendance: 3900
Jinzhong City Gymnasium

Referees: Kristof Altmar (HUN) / Marton Horvath (HUN)

P.R. of China

Players		Goals / shots										Attack					Def.			Penalties				TP	
#	Surname and name	S	Tot.	%	9m	6m	Wing	7m	FB	Brk.	LD	As.	PC	E7	E2	TF	St.	C7	Blk	YC	2m	R	B		
1	SUN Yihan																								19:13
3	PAN Fengying		2/6	33	0/2			1/2		1/2		3		1		3		1							27:56
5	ZHANG Jingwen		2/2	100	1/1					1/1		1				1	1	1							15:34
8	LIANG Jing	S	4/8	50	0/4			3/3		1/1		3	1	1		3									37:01
9	ZHANG Shuoyan	S	1/4	25	0/1	1/1				0/2		4	1	1	1	4	1								41:06
10	HU Jiaxin		2/3	67				1/1		1/2		1	1			2									17:53
12	WANG Xiaoyan																								13:27
15	YANG Yue	S	3/4	75		3/4									2			1							30:12
16	HUANG Sitong	S																							16:30
23	ZHENG Yun	S	3/3	100		2/2			1/1							1									16:13
24	ZHU Yifan		1/3	33						1/3		1		1		1									10:12
26	LIU Yutong																1								20:27
37	CHEN Xinyu		3/3	100		3/3										1							1		32:20
39	SHA Yiyao		1/2	50			1/1		0/1									2					1		32:10
55	LIU Yixuan	S	2/4	50		1/1	1/3									1							1		48:49
56	CHENG Yahan	S	1/2	50			1/2										1								40:57
	Team / bench															1									
	TOTAL		25/44	57	1/8	10/11	3/6	5/6	1/2	5/11	0/0	13	3	6	1	18	4	5	0	0	3	0	0		

Goalkeepers		Saves / shots									
#	Surname and name	Tot.	%	9m	6m	Wing	7m	FB	Brk.	LD	
1	SUN Yihan	2/18	11		0/1	1/6	1/1	0/5	0/5		
12	WANG Xiaoyan	1/11	9	0/1	0/2	0/2	0/2	1/2	0/4		
16	HUANG Sitong	3/16	19	1/3	1/3	1/4	0/2	0/1	0/3		
	TOTAL	6/45	13	1/4	1/6	2/10	1/5	2/8	0/12	0/0	

Coach: Zsadányi Sándor

Number of attacks: 59, Efficiency: 42%, Average Duration: 32.64 seconds

Attack by type of defense

	Shots	9m	6m	Wing	TF	E7	E2
On def. 6-0	17/34	1/8	8/9	3/6	18	6	1
Fastbreak	1/2				0	0	0

Defense by type

	Total	9m	6m	Wing	Stl.	C7	2m
Def. 6-0	12/13	3/3	2/2	3/4	1	3	0
Def. 5-1	14/20	0/1	2/3	4/8	3	2	0
Fastbreak	7/8				0	0	3

Attack with superiority / minority / goalkeeper out

	Attack				Reaction		
	Att.	Eff.	Shots	TF	FB	LD	Tot.
7 on 6 (GK out)	22	32%	7/13	9	2/2	3/3	5/5
6 on 6 (GK out)	2	100%	2/2	0	0/0	0/1	0/1
6 on 6	30	50%	15/23	7			
7 on 5 (GK out)	2	0%	0/1	1	0/0	0/1	0/1
6 on 5 (GK out)	1	0%	0/0	1	0/0	0/0	0/0
6 on 5	2	50%	1/2	0			

Player superiority / GK out counted at the end of attack (in case it changes during attack)

Defense with superiority / minority / goalkeeper out

	Attack				Reaction		
	Att.	Eff.	Shots	TF	FB	LD	Tot.
7 on 6 (GK out)	14	79%	11/13	1	0/1	0/0	0/1
7 on 5 (GK out)	2	50%	1/2	0	0/0	0/0	0/0
6 on 6 (GK out)	1	100%	1/1	0	0/0	0/0	0/0
6 on 5 (GK out)	1	100%	1/1	0	0/0	0/0	0/0
6 on 6	38	68%	26/31	7			
6 on 5	2	100%	2/2	0			
5 on 6	1	0%	0/1	0			

Numbers show attacking numbers of opponent. Lower efficiency of opponent means better defense of this team

Jersey number Tot. Total shooting 6m 6m (line) shooting 9m 9m shooting Wng Wing shooting FB Fastbreak sh. 7m 7m penalty sh.
Brk. Breakthrough sh. LD Long distance sh. As. Assists PC Pass clear chance E7 Earned 7m pen. TF Technical faults St. Steals
2m 2m punishments C7. Committed 7m E2 Earned 2m pun. YC. Yellow cards R/B Red/Blue cards Blk. Blocks S Starting Line-up



25th IHF Women's Junior World Championship 2026



Preliminary Round - Group E, 3. round

Match Team Statistics

Match No. 42

Denmark 42 - 25 P.R. of China

(23 - 13) (19 - 12)

27.6.2026. 18:30

Attendance: 3900

Jinzhong City Gymnasium

Referees: Kristof Altmar (HUN) / Marton Horvath (HUN)

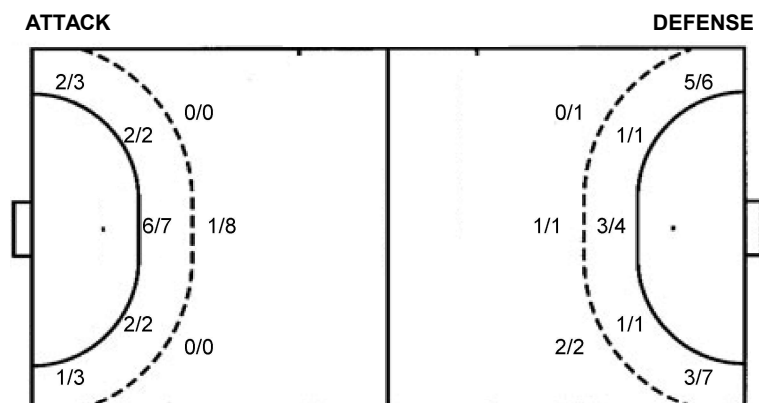
Shot distribution by player

3 F. Pan	5 J. Zhang	8 J. Liang	9 S. Zhang	10 J. Hu	15 Y. Yang	23 Y. Zheng																																																															
<table border="1"><tr><td></td><td></td><td>1/2</td></tr><tr><td></td><td></td><td>1/2</td></tr><tr><td></td><td></td><td></td></tr></table> 1 miss. 1 block			1/2			1/2				<table border="1"><tr><td></td><td></td><td></td></tr><tr><td>1/1</td><td></td><td></td></tr><tr><td>1/1</td><td></td><td></td></tr></table>				1/1			1/1			<table border="1"><tr><td></td><td></td><td>1/1</td></tr><tr><td></td><td>1/1</td><td></td></tr><tr><td></td><td></td><td>1/1</td></tr></table> 1 post 2 miss. 1 block 1/1 lob			1/1		1/1				1/1	<table border="1"><tr><td></td><td></td><td></td></tr><tr><td>0/1</td><td>0/2</td><td></td></tr><tr><td>1/1</td><td></td><td></td></tr></table>				0/1	0/2		1/1			<table border="1"><tr><td></td><td></td><td></td></tr><tr><td>1/1</td><td></td><td></td></tr><tr><td>1/1</td><td></td><td></td></tr></table> 1 post				1/1			1/1			<table border="1"><tr><td></td><td></td><td>2/2</td></tr><tr><td>0/1</td><td></td><td></td></tr><tr><td></td><td>1/1</td><td></td></tr></table>			2/2	0/1				1/1		<table border="1"><tr><td></td><td></td><td></td></tr><tr><td></td><td></td><td>2/2</td></tr><tr><td>1/1</td><td></td><td></td></tr></table>						2/2	1/1		
		1/2																																																																			
		1/2																																																																			
1/1																																																																					
1/1																																																																					
		1/1																																																																			
	1/1																																																																				
		1/1																																																																			
0/1	0/2																																																																				
1/1																																																																					
1/1																																																																					
1/1																																																																					
		2/2																																																																			
0/1																																																																					
	1/1																																																																				
		2/2																																																																			
1/1																																																																					
24 Y. Zhu	26 Y. Liu	37 X. Chen	39 Y. Sha	55 Y. Liu	56 Y. Cheng	TOTAL																																																															
<table border="1"><tr><td></td><td></td><td></td></tr><tr><td></td><td></td><td></td></tr><tr><td>0/1</td><td>1/1</td><td></td></tr></table> 1 post							0/1	1/1		<table border="1"><tr><td></td><td></td><td></td></tr><tr><td></td><td></td><td></td></tr><tr><td></td><td></td><td></td></tr></table>										<table border="1"><tr><td></td><td></td><td></td></tr><tr><td>1/1</td><td></td><td></td></tr><tr><td>2/2</td><td></td><td></td></tr></table>				1/1			2/2			<table border="1"><tr><td></td><td></td><td></td></tr><tr><td>0/1</td><td></td><td></td></tr><tr><td>1/1</td><td></td><td></td></tr></table>				0/1			1/1			<table border="1"><tr><td></td><td></td><td></td></tr><tr><td></td><td>0/1</td><td></td></tr><tr><td>0/1</td><td></td><td>2/2</td></tr></table>					0/1		0/1		2/2	<table border="1"><tr><td></td><td>1/1</td><td></td></tr><tr><td>0/1</td><td></td><td></td></tr><tr><td></td><td></td><td></td></tr></table>		1/1		0/1						<table border="1"><tr><td></td><td>1/1</td><td>4/5</td></tr><tr><td>3/7</td><td>1/4</td><td>3/4</td></tr><tr><td>7/9</td><td>2/2</td><td>3/3</td></tr></table> 3 post 3 miss. 2 block 1/1 lob		1/1	4/5	3/7	1/4	3/4	7/9	2/2	3/3
0/1	1/1																																																																				
1/1																																																																					
2/2																																																																					
0/1																																																																					
1/1																																																																					
	0/1																																																																				
0/1		2/2																																																																			
	1/1																																																																				
0/1																																																																					
	1/1	4/5																																																																			
3/7	1/4	3/4																																																																			
7/9	2/2	3/3																																																																			

Saves distribution goalkeepers

1 Y. Sun	12 X. Wang	16 S. Huang	TOTAL																																				
<table border="1"><tr><td>0/1</td><td>0/2</td><td>0/1</td></tr><tr><td></td><td></td><td>1/4</td></tr><tr><td>0/5</td><td>0/1</td><td>1/4</td></tr></table>	0/1	0/2	0/1			1/4	0/5	0/1	1/4	<table border="1"><tr><td>0/1</td><td></td><td>0/2</td></tr><tr><td>0/2</td><td></td><td>0/2</td></tr><tr><td>0/1</td><td>0/1</td><td>1/2</td></tr></table>	0/1		0/2	0/2		0/2	0/1	0/1	1/2	<table border="1"><tr><td></td><td></td><td>0/1</td></tr><tr><td>0/3</td><td>1/1</td><td></td></tr><tr><td>1/6</td><td>0/1</td><td>1/4</td></tr></table>			0/1	0/3	1/1		1/6	0/1	1/4	<table border="1"><tr><td>0/2</td><td>0/2</td><td>0/4</td></tr><tr><td>0/5</td><td>1/1</td><td>1/6</td></tr><tr><td>1/12</td><td>0/3</td><td>3/10</td></tr></table>	0/2	0/2	0/4	0/5	1/1	1/6	1/12	0/3	3/10
0/1	0/2	0/1																																					
		1/4																																					
0/5	0/1	1/4																																					
0/1		0/2																																					
0/2		0/2																																					
0/1	0/1	1/2																																					
		0/1																																					
0/3	1/1																																						
1/6	0/1	1/4																																					
0/2	0/2	0/4																																					
0/5	1/1	1/6																																					
1/12	0/3	3/10																																					

Shots by position



7m penalties 5/6
Fastbreak 1/2
Breakthrough 5/11
Long dist. 0/0

7m penalties 4/5
Fastbreak 7/8
Breakthrough 12/12
Long dist. 3/5

Shooting statistics

Position	Goals	Sav.	Miss.	Post	Blk.	Total	%
Back (9m)	1	2	2	1	2	8	13
Line (6m)	10	1	0	0	0	11	91
Wing	3	3	0	0	0	6	50
7m penalties	5	1	0	0	0	6	83
Fastbreak	1	1	0	0	0	2	50
Breakthrough	5	3	1	2	0	11	45
Total	25	11	3	3	2	44	57

Jersey number Tot. Total shooting 6m 6m (line) shooting 9m 9m shooting Wng Wing shooting FB Fastbreak sh. 7m 7m penalty sh.
Brk. Breakthrough sh. LD Long distance sh. As. Assists PC Pass clear chance E7 Earned 7m pen. TF Technical faults St. Steals
2m 2m punishments C7. Committed 7m E2 Earned 2m pun. YC. Yellow cards R/B Red/Blue cards Blk. Blocks S Starting Line-up

Handball statistics and livescore by Toma-soft ltd (www.toma-soft.hr)

