



25th IHF Women's Junior World Championship 2026



Preliminary Round - Group E, 3. round

Match Team Statistics

Match No. 41

Guinea 21 - 24 Algeria

(14 - 12) (7 - 12)

27.6.2026. 16:15

Attendance: 2000

Jinzhong City Gymnasium

Referees: German Araujo (URU) / Nicolas Perdomo (URU)

Guinea

Players			Goals / shots								Attack					Def.			Penalties				TP		
#	Surname and name	S	Tot.	%	9m	6m	Wing	7m	FB	Brk.	LD	As.	PC	E7	E2	TF	St.	C7	Blk	YC	2m	R		B	
1	CAMARA Mama Adama	S																							27:49
2	CAMARA Mabinty Delmaya	S	4/10	40	3/6		1/3			0/1		1				2		1					1		60:00
3	SOKPO Edite Ablavy	S	0/2	0			0/2										1	1							34:05
5	DIALLO Aissatou	S	0/1	0			0/1					4	4			2			1			1			57:30
6	KOLIE Celestine																								
7	RACINE DIALLO Maellie Hawa		1/2	50	0/1		1/1					1			1	3	1								25:55
8	SOUMAH Fatoumata Naby	S	5/9	56	1/4	1/1	0/1	2/2	1/1					1		2	1								30:32
10	KEITA Nahan																								
11	MANSARE Yarie		3/3	100		1/1	2/2									1	1								25:32
12	KEITA Fatou																								
22	SOUMAH Aminata	S	6/16	38	6/14					0/2		2	1		1	4	2					1			44:32
23	RACINE DIALLO Jade Habie																								7:03
24	DIALLO Djeinabou																								
26	DIALLO Mariame																2								21:54
29	DIABY Saran	S	2/2	100		2/2								1				1	1						52:57
78	DIARRA Boutie																								32:11
Team / bench																									
TOTAL			21/45	47	10/25	4/4	4/10	2/2	1/1	0/3	0/0	8	5	2	2	14	8	3	2	1	2	0	0		

Goalkeepers		Saves / shots								
#	Surname and name	Tot.	%	9m	6m	Wing	7m	FB	Brk.	LD
1	CAMARA Mama Adama	5/18	28	1/5	1/2	1/4		0/2	2/5	
78	DIARRA Boutie	5/16	31	3/5		1/4	0/2	0/1	1/4	
TOTAL		10/34	29	4/10	1/2	2/8	0/2	0/3	3/9	0/0

Coach: Titi Clementine Mara

Number of attacks: 56, Efficiency: 38%, Average Duration: 32.23 seconds

Attack by type of defense

	Shots	9m	6m	Wing	TF	E7	E2
On def. 6-0	16/39	10/25	3/3	3/8	14	2	2
Fastbreak	1/1				0	0	0

Defense by type

	Total	9m	6m	Wing	Stl.	C7	2m
Def. 6-0	18/38	6/18	1/2	5/7	8	3	0
Fastbreak	3/3				0	0	2

Attack with superiority / minority / goalkeeper out

	Attack				Reaction		
	Att.	Eff.	Shots	TF	FB	LD	Tot.
6 on 6	48	38%	18/37	11			
6 on 5	4	25%	1/2	2			
5 on 6	4	50%	2/3	1			

Player superiority / GK out counted at the end of attack (in case it changes during attack)

Defense with superiority / minority / goalkeeper out

	Attack				Reaction		
	Att.	Eff.	Shots	TF	FB	LD	Tot.
6 on 6	49	41%	20/35	14			
5 on 6	3	67%	2/2	1			
6 on 5	4	50%	2/2	2			

Numbers show attacking numbers of opponent. Lower efficiency of opponent means better defense of this team

Jersey number Tot. Total shooting 6m 6m (line) shooting 9m 9m shooting Wng Wing shooting FB Fastbreak sh. 7m 7m penalty sh.
 Brk. Breakthrough sh. LD Long distance sh. As. Assists PC Pass clear chance E7 Earned 7m pen. TF Technical faults St. Steals
 2m 2m punishments C7. Committed 7m E2 Earned 2m pun. YC. Yellow cards R/B Red/Blue cards Blk. Blocks S Starting Line-up

Handball statistics and livescore by Toma-soft ltd (www.toma-soft.hr)



25th IHF Women's Junior World Championship 2026



Preliminary Round - Group E, 3. round

Match Team Statistics

Match No. 41

Guinea 21 - 24 Algeria

(14 - 12) (7 - 12)

27.6.2026. 16:15

Attendance: 2000

Jinzhong City Gymnasium

Referees: German Araujo (URU) / Nicolas Perdomo (URU)

Shot distribution by player

2 M. Camara

	0/1	
1/2	2/2	1/1

2 post 1 miss. 1 block

3 E. Sokpo

	0/1	

1 post

5 A. Diallo

	0/1	

6 C. Kolie

7 M. Racine Diallo

		1/1

1 block

8 F. Soumah

1/2		
2/3	0/1	2/2

1 miss.

10 N. Keita

11 Y. Mansare

1/1	2/2	

12 F. Keita

22 A. Soumah

1/1		
		1/1
2/3	1/2	1/1

1 post 7 miss.

23 J. Racine Diallo

24 D. Diallo

26 M. Diallo

29 S. Diaby

		2/2

TOTAL

1/1	0/1	
1/2	0/2	1/1
6/9	5/7	7/7

4 post 9 miss. 2 block

Saves distribution goalkeepers

1 M. Camara

1/2		
2/3	1/1	1/1
0/6		0/5

78 B. Diarra

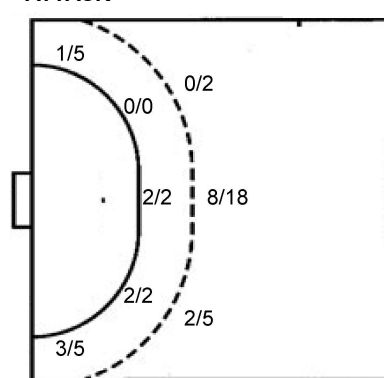
1/2	1/1	
0/2		1/2
0/1	1/2	0/4

TOTAL

2/4	1/1	
2/5	1/1	2/3
0/7	1/2	0/9

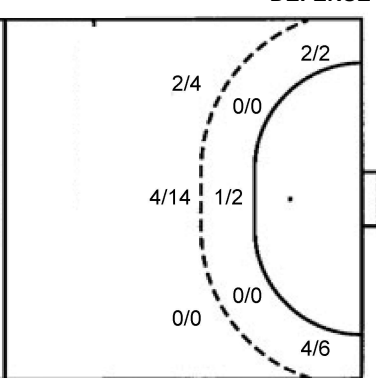
Shots by position

ATTACK



7m penalties 2/2
Fastbreak 1/1
Breakthrough 0/3
Long dist. 0/0

DEFENSE



7m penalties 2/3
Fastbreak 3/3
Breakthrough 6/11
Long dist. 0/0

Shooting statistics

Position	Goals	Sav.	Miss.	Post	Blk.	Total	%
Back (9m)	10	3	8	2	2	25	40
Line (6m)	4	0	0	0	0	4	100
Wing	4	4	0	2	0	10	40
7m penalties	2	0	0	0	0	2	100
Fastbreak	1	0	0	0	0	1	100
Breakthrough	0	2	1	0	0	3	0
Total	21	9	9	4	2	45	47

Jersey number Tot. Total shooting 6m 6m (line) shooting 9m 9m shooting Wng Wing shooting FB Fastbreak sh. 7m 7m penalty sh.
Brk. Breakthrough sh. LD Long distance sh. As. Assists PC Pass clear chance E7 Earned 7m pen. TF Technical faults St. Steals
2m 2m punishments C7. Committed 7m E2 Earned 2m pun. YC. Yellow cards R/B Red/Blue cards Blk. Blocks S Starting Line-up

Handball statistics and livescore by Toma-soft ltd (www.toma-soft.hr)



25th IHF Women's Junior World Championship 2026



Preliminary Round - Group E, 3. round

Match Team Statistics

Match No. 41

Guinea 21 - 24 Algeria

(14 - 12) (7 - 12)

27.6.2026. 16:15

Attendance: 2000

Jinzhong City Gymnasium

Referees: German Araujo (URU) / Nicolas Perdomo (URU)

Algeria

Players		Goals / shots									Attack				Def.			Penalties			TP					
#	Surname and name	S	Tot.	%	9m	6m	Wing	7m	FB	Brk.	LD	As.	PC	E7	E2	TF	St.	C7	Blk	YC		2m	R	B		
2	BOUALEM Mattilda Aya															1							1		10:31	
5	YELLES Racha	S	3/5	60	2/3					1/2		1		1		3						1			26:50	
6	SID Amira		0/1	0	0/1											2									6:32	
15	HAMMIDECHE Maroua		3/7	43	2/5			0/1	1/1			3	2			3									42:23	
17	SADI Lina Ines		1/5	20	1/5														1						15:38	
19	SAHLI Amel	S	1/4	25	0/1					1/3						1									22:26	
22	DJERMOULI Louiza																								42:59	
24	ZEDIRI Meissa	S	6/8	75				5/7		1/1															59:56	
27	BERKANI Lylia																									
28	AYA Amri																									
29	OULGHADI Amel																									
30	MESTOURI-THEODORE Timea	S	1/2	50		0/1	1/1									1									59:54	
31	MANSOURI Kinda		4/5	80	0/1			2/2	1/1	1/1		2													27:03	
69	LAKRAFED Jihane	S	1/2	50	0/1	1/1						3		2		3	2	1	1	1					47:50	
92	DJAIDER Malak	S	4/6	67	1/1				1/1	2/4		1				3		1							40:38	
99	KHAMTACHE Marwa Khatima	S																							17:01	
	Team / bench																									
	TOTAL		24/45	53	6/18	1/2	6/8	2/3	3/3	6/11	0/0	10	2	3	0	17	2	2	2	1	1	1	0			

Goalkeepers		Saves / shots								
#	Surname and name	Tot.	%	9m	6m	Wing	7m	FB	Brk.	LD
22	DJERMOULI Louiza	6/19	32	3/8	0/3	1/5	0/1		2/2	
99	KHAMTACHE Marwa Khatima	3/11	27	0/5	0/1	3/3	0/1	0/1		
	TOTAL	9/30	30	3/13	0/4	4/8	0/2	0/1	2/2	0/0

Coach: Ait Ouarab Mourad

Number of attacks: 56, Efficiency: 43%, Average Duration: 31.84 seconds

Attack by type of defense

	Shots	9m	6m	Wing	TF	E7	E2
On def. 6-0	18/38	6/18	1/2	5/7	17	3	0
Fastbreak	3/3				0	0	0

Defense by type

	Total	9m	6m	Wing	Stl.	C7	2m
Def. 6-0	16/39	10/25	3/3	3/8	2	2	0
Fastbreak	1/1				0	0	1

Attack with superiority / minority / goalkeeper out

	Attack				Reaction		
	Att.	Eff.	Shots	TF	FB	LD	Tot.
6 on 6	49	41%	20/35	14			
5 on 6	3	67%	2/2	1			
6 on 5	4	50%	2/2	2			

Player superiority / GK out counted at the end of attack (in case it changes during attack)

Defense with superiority / minority / goalkeeper out

	Attack				Reaction		
	Att.	Eff.	Shots	TF	FB	LD	Tot.
6 on 6	48	38%	18/37	11			
6 on 5	4	25%	1/2	2			
5 on 6	4	50%	2/3	1			

Numbers show attacking numbers of opponent. Lower efficiency of opponent means better defense of this team

Jersey number Tot. Total shooting 6m 6m (line) shooting 9m 9m shooting Wng Wing shooting FB Fastbreak sh. 7m 7m penalty sh.
 Brk. Breakthrough sh. LD Long distance sh. As. Assists PC Pass clear chance E7 Earned 7m pen. TF Technical faults St. Steals
 2m 2m punishments C7. Committed 7m E2 Earned 2m pun. YC. Yellow cards R/B Red/Blue cards Blk. Blocks S Starting Line-up

Handball statistics and livescore by Toma-soft ltd (www.toma-soft.hr)



25th IHF Women's Junior World Championship 2026



Preliminary Round - Group E, 3. round

Match Team Statistics

Match No. 41

Guinea 21 - 24 Algeria

(14 - 12) (7 - 12)

27.6.2026. 16:15

Attendance: 2000

Jinzhong City Gymnasium

Referees: German Araujo (URU) / Nicolas Perdomo (URU)

Shot distribution by player

2 M. Boualem

5 R. Yelles

0/1		
2/2		1/1

1 miss.

6 A. Sid

1 miss.

15 M. Hammideche

1/1	0/1	
1/1		
1/1		

3 post

17 L. Sadi

1/1		

1 post 1 miss. 2 block

19 A. Sahli

0/1		
		0/2
1/1		

24 M. Zediri

1/2		
2/2	1/1	2/2

0/1 lob

27 L. Berkani

28 A. Aya

29 A. Oulghadi

30 T. Mestouri-Theodore

	0/1	

1/1 lob

31 K. Mansouri

1/1		
		3/3

1 miss.

69 J. Lakrafed

1/2		

92 M. Djaidar

		1/1
	0/1	3/3

1 miss.

TOTAL

2/4	0/1	
3/5	0/1	1/3
7/7	1/2	9/9

4 post 5 miss. 2 block 1/2 lob

Saves distribution goalkeepers

22 L. Djermouli

1/1	1/1	
3/7	1/4	0/6

99 M. Khamtache

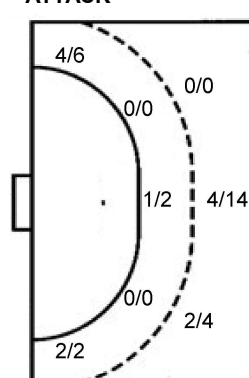
0/1	1/1	
0/1	1/1	0/1
0/2	1/3	0/1

TOTAL

0/1	1/1	
1/2	2/2	0/1
3/9	2/7	0/7

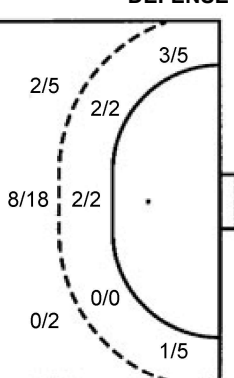
Shots by position

ATTACK



7m penalties 2/3
Fastbreak 3/3
Breakthrough 6/11
Long dist. 0/0

DEFENSE



7m penalties 2/2
Fastbreak 1/1
Breakthrough 0/3
Long dist. 0/0

Shooting statistics

Position	Goals	Sav.	Miss.	Post	Blk.	Total	%
Back (9m)	6	4	3	3	2	18	33
Line (6m)	1	1	0	0	0	2	50
Wing	6	2	0	0	0	8	75
7m penalties	2	0	0	1	0	3	67
Fastbreak	3	0	0	0	0	3	100
Breakthrough	6	3	2	0	0	11	55
Total	24	10	5	4	2	45	53

Jersey number Tot. Total shooting 6m 6m (line) shooting 9m 9m shooting Wng Wing shooting FB Fastbreak sh. 7m 7m penalty sh.
Brk. Breakthrough sh. LD Long distance sh. As. Assists PC Pass clear chance E7 Earned 7m pen. TF Technical faults St. Steals
2m 2m punishments C7. Committed 7m E2 Earned 2m pun. YC. Yellow cards R/B Red/Blue cards Blk. Blocks S Starting Line-up

Handball statistics and livescore by Toma-soft ltd (www.toma-soft.hr)



25th IHF Women's Junior World Championship 2026



Preliminary Round - Group E, 3. round

Match Team Statistics

Guinea 21 - 24 Algeria
(14 - 12) (7 - 12)

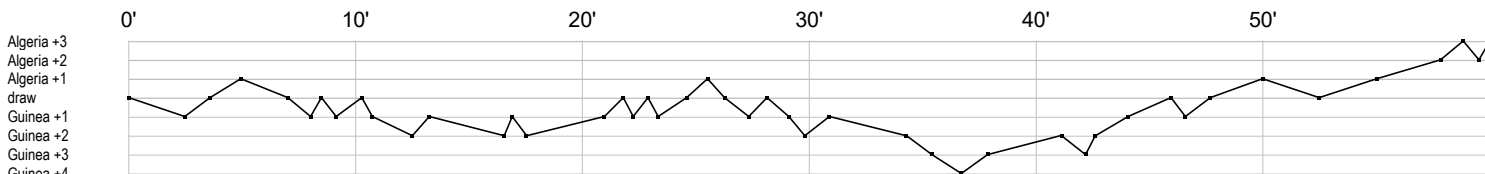
27.6.2026. 16:15

Attendance: 2000

Jinzhang City Gymnasium

Match No. 41

Referees: German Araujo (URU) / Nicolas Perdomo (URU)



Guinea

1 Camara M	s s r r s r r r r r r r r r r r r																				r s	
2 Camara M		f		g		f	f2		g t	c a		g		f	f t	g						f
3 Sokpo E		f	b		f																c	
5 Diallo A					t	2f		x		p		a a	p	a	t			p				p a
6 Kolie C																						
7 Racine Diallo									f t a	bt	g				i					t		
8 Soumah F	t	f		g	b g		g										eg	f	t	g	f f	
10 Keita N																						
11 Mansare Y								t g		g g												b
12 Keita F																						
22 Soumah A	t g f p	yg	g fba				f	g f f	a	f g g	f f	t		b	t	i		t		f f		
23 Racine Diallo																						
24 Diallo D																						
26 Diallo M				b																		
29 Diaby S								cx					g					e				g
78 Diarra B									r ss	r			r		r r r	r s r	s r			s r	r	

Algeria

2 Boualem M											t		r									
5 Yelles R	f	f g	g t		g t			e			t	a	2									
6 Sid A											t	t f										
15 Hammideche						t		pg	f a g	f f f g			t		t a					p		
17 Sadi L						g f f		f x	f													
19 Sahli A	f		f t											g		f						
22 Djermouli L						r	s r r	s r r r r r		s r r r		s r		s	r s							r
24 Zediri M				g		g g	f						g g g		f							
27 Berkani L																						
28 Aya A																						
29 Oulghadi A																						
30 Mestouri-Theo					t								g									f
31 Mansouri K					f		a a	g g									g g					
69 Lakrafed J		y		a	t x		a e	f t						tb	ba	c e						
92 Djaidier M			g		t								g		c f a	g f	t t	g				
99 Khamtache M	r	s	r r r	r	sr	s r								r								

In game	g Goal scored	f Missed shot	a Assist	t Technical faults	b Steal
2 2min suspension	e Earned 7m	c Committed 7m	y Yellow card	r Red Card	k Blue card
i Earned 2min.	x Block	4 4min suspension	p Pass for clear chance	s Saved shot	r Received goal

Handball statistics and livescore by Toma-soft ltd (www.toma-soft.hr)