



25th IHF Women's Junior World Championship 2026



Preliminary Round - Group D, 3. round

Match Team Statistics

Match No. 39

Argentina 29 - 26 Turkiye

(11 - 12) (18 - 14)

27.6.2026. 11:45

Attendance: 500

Zhongdu Campus

Gymnasium

Referees: Yufeng Cheng (CHN) / Yunlei Zhou (CHN)

Argentina

Players		Goals / shots										Attack				Def.			Penalties				TP		
#	Surname and name	S	Tot.	%	9m	6m	Wing	7m	FB	Brk.	LD	As.	PC	E7	E2	TF	St.	C7	Bik	YC	2m	R		B	
2	PEIXOTO ALVES Kira	S															1								40:40
4	GENOUD Luou Martina		2/3	67			0/1		2/2								2	1							30:00
5	LOPEZ Mara Susana	S															1								25:08
9	MAITINI BELHITS Selena	S	0/1	0						0/1															19:39
10	MENDOZA Micaela Natali																1								15:48
11	SCHNEIDER Milagros															2									1:58
13	VENTOS VIDAL Mara Delfina		0/1	0					0/1							1		1				1			19:20
14	PATRONE Isabella Julia		3/8	38	0/2					3/6		1	1	1	1	1	1								33:11
17	PRAT MORENO Delfina	S	3/3	100			3/3										1								29:44
22	LOSARCOS Catalina Alexa	S	5/6	83	1/1	1/1	2/3		1/1							1	2								47:35
23	FERRARO Josefina																								0:03
24	MOLINA Helena Albertina	S	10/15	67	1/3	1/1		3/3		5/8		5	3	1	2	4									55:05
40	NUNEZ FRIDMANAS Lola Valentina	S										1	2												59:57
49	SOKALSKI Xiomara Mailén		5/8	63		1/2				4/6		3		1		6									32:10
66	ARES Paulina																								
99	GASPARRI Delfina Belen		1/3	33			1/1		0/2																9:42
Team / bench																1									
TOTAL			29/48	60	2/6	3/4	6/8	3/3	3/6	12/21	0/0	10	6	3	3	19	7	1	0	0	1	0	0		

Goalkeepers		Saves / shots									
#	Surname and name	Tot.	%	9m	6m	Wing	7m	FB	Brk.	LD	
23	FERRARO Josefina										
40	NUNEZ FRIDMANAS Lola Valentina	16/42	38	8/16	3/13	1/3	1/1	2/4	1/5		
TOTAL		16/42	38	8/16	3/13	1/3	1/1	2/4	1/5	0/0	

Coach: **Martin Ricardo Duhau**

Number of attacks: 61, Efficiency: 48%, Average Duration: 30.95 seconds

Attack by type of defense

	Shots	9m	6m	Wing	TF	E7	E2
On def. 6-0	11/19	2/4	1/1	2/3	9	3	2
On def. 5-1	11/18	0/2	1/2	4/5	10	0	1
On def. press.	1/2	0/0	1/1	0/0	0	0	0
Fastbreak	3/6				0	0	0

Defense by type

	Total	9m	6m	Wing	Stl.	C7	2m
Def. 6-0	22/39	8/19	9/12	2/3	6	1	0
Def. 5-1	2/3	0/1	1/1	0/0	1	0	0
Fastbreak	2/5				0	0	1

Attack with superiority / minority / goalkeeper out

	Attack				Reaction		
	Att.	Eff.	Shots	TF	FB	LD	Tot.
6 on 6	52	50%	26/37	15			
6 on 5	8	25%	2/4	4			
5 on 6	1	100%	1/1	0			

Player superiority / GK out counted at the end of attack (in case it changes during attack)

Defense with superiority / minority / goalkeeper out

	Attack				Reaction		
	Att.	Eff.	Shots	TF	FB	LD	Tot.
7 on 6 (GK out)	1	0%	0/1	0	0/0	0/0	0/0
6 on 6 (GK out)	8	50%	4/6	2	0/0	0/0	0/0
6 on 6	50	44%	22/38	12			
5 on 6	1	0%	0/0	1			
6 on 5	1	0%	0/1	0			

Numbers show attacking numbers of opponent. Lower efficiency of opponent means better defense of this team

Jersey number Tot. Total shooting 6m 6m (line) shooting 9m 9m shooting Wng Wing shooting FB Fastbreak sh. 7m 7m penalty sh.
 Brk. Breakthrough sh. LD Long distance sh. As. Assists PC Pass clear chance E7 Earned 7m pen. TF Technical faults St. Steals
 2m 2m punishments C7. Committed 7m E2 Earned 2m pun. YC. Yellow cards R/B Red/Blue cards Bik. Blocks S Starting Line-up

Handball statistics and livescore by Toma-soft ltd (www.toma-soft.hr)



25th IHF Women's Junior World Championship 2026



Preliminary Round - Group D, 3. round

Match Team Statistics
Match No. 39

Argentina 29 - 26 Turkiye
(11 - 12) (18 - 14)

27.6.2026. 11:45
Attendance: 500
Zhongdu Campus
Gymnasium

Referees: Yufeng Cheng (CHN) / Yunlei Zhou (CHN)

Shot distribution by player

2 K. Peixoto Alves

4 L. Genoud

1/1		0/1

1/1 lob

5 M. Lopez

9 S. Maitini Belhits

1 block

10 M. Mendoza

11 M. Schneider

13 M. Ventos Vidal

1 miss.

14 I. Patrone

2/2		
		1/1

2 post 2 miss. 0/1 lob

17 D. Prat Moreno

1/1		2/2

22 C. Losarcos

		1/1
	2/2	

1 post 2/2 lob

24 H. Molina

		1/1
3/4		1/1
1/1	2/3	1/1

1 post 1 miss. 1 block 1/1 lob

49 X. Sokalski

1/2		
2/2	1/1	1/1

1 post 1 miss.

66 P. Ares

99 D. Gasparri

0/1		

1/2

TOTAL

2/2		1/1
4/7		2/2
6/7	5/6	5/6

5 post 5 miss. 2 block 4/5 lob

Saves distribution goalkeepers

23 J. Ferraro

40 L. Nunez Fridmanas

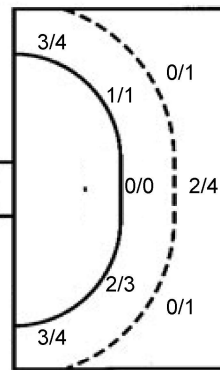
1/6	0/1	4/7
5/5	1/1	1/4
1/10	0/1	3/6

TOTAL

1/6	0/1	4/7
5/5	1/1	1/4
1/10	0/1	3/6

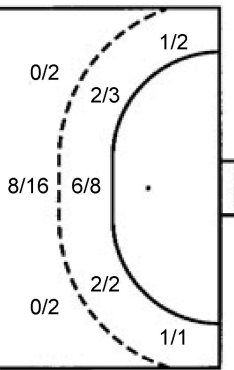
Shots by position

ATTACK



7m penalties 3/3
Fastbreak 3/6
Breakthrough 12/21
Long dist. 0/0

DEFENSE



7m penalties 0/1
Fastbreak 2/5
Breakthrough 4/6
Long dist. 0/0

Shooting statistics

Position	Goals	Sav.	Miss.	Post	Blk.	Total	%
Back (9m)	2	0	0	3	1	6	33
Line (6m)	3	1	0	0	0	4	75
Wing	6	1	0	1	0	8	75
7m penalties	3	0	0	0	0	3	100
Fastbreak	3	2	1	0	0	6	50
Breakthrough	12	3	4	1	1	21	57
Total	29	7	5	5	2	48	60

Jersey number Tot. Total shooting 6m 6m (line) shooting 9m 9m shooting Wng Wing shooting FB Fastbreak sh. 7m 7m penalty sh.
Brk. Breakthrough sh. LD Long distance sh. As. Assists PC Pass clear chance E7 Earned 7m pen. TF Technical faults St. Steals
2m 2m punishments C7. Committed 7m E2 Earned 2m pun. YC. Yellow cards R/B Red/Blue cards Blk. Blocks S Starting Line-up

Handball statistics and livescore by Toma-soft ltd (www.toma-soft.hr)



25th IHF Women's Junior World Championship 2026



Preliminary Round - Group D, 3. round

Match Team Statistics

Match No. 39

Argentina 29 - 26 Turkiye

(11 - 12) (18 - 14)

27.6.2026. 11:45

Attendance: 500

Zhongdu Campus

Gymnasium

Referees: Yufeng Cheng (CHN) / Yunlei Zhou (CHN)

Turkiye

Players		Goals / shots									Attack					Def.			Penalties				TP		
#	Surname and name	S	Tot.	%	9m	6m	Wing	7m	FB	Brk.	LD	As.	PC	E7	E2	TF	St.	C7	Blk	YC	2m	R		B	
3	BOZOVA Seval	S	1/1	100					1/1			1	1	1	1										43:21
5	YÜKSEL İlayda	S	4/6	67		4/5			0/1							1									21:02
7	ÇINAR Kübra Nur		4/5	80		4/4			0/1			1				1	2		1						37:53
11	DAGLI Sudenaz		0/1	0			0/1					1													17:19
13	HÜZMELİ Ela	S	1/1	100			1/1					1	1				1	1			1				44:43
14	SÖNMEZ Bugu	S	6/13	46	4/9	1/1		0/1		1/2		4	2			4									48:16
23	SEVEN Buket	S	3/5	60	0/1				0/1	3/3		3	1			4	2								47:00
24	KAYA Nazlı																								
28	DURDU Sümeyye		1/2	50		0/1	1/1																		13:36
32	ÖZ Siddika																								
38	ÖZTÜRK Azra		2/4	50	2/4											1	2				1				21:41
41	DIKME Gazel	S														3									20:27
43	LAHAÇLAR İrem Asya																								4:15
45	YILMAZ Betül	S																							53:24
63	KARAGÖZLÜ Helin Su		2/3	67	1/2	1/1						2	1						1						20:27
71	MUHCU Hande		2/7	29	1/4	0/1			1/1	0/1						1	1					1			26:36
	Team / bench																								
	TOTAL		26/48	54	8/20	10/13	2/3	0/1	2/5	4/6	0/0	13	6	1	1	15	6	3	2	0	3	0	0		

Goalkeepers		Saves / shots								
#	Surname and name	Tot.	%	9m	6m	Wing	7m	FB	Brk.	LD
43	LAHAÇLAR İrem Asya	0/3	0			0/2			0/1	
45	YILMAZ Betül	7/32	22	0/1	1/4	1/5	0/3	2/5	3/14	
	TOTAL	7/35	20	0/1	1/4	1/7	0/3	4/5	3/15	0/0

Coach: David Ginesta Montes

Number of attacks: 61, Efficiency: 43%, Average Duration: 27.49 seconds

Attack by type of defense

	Shots	9m	6m	Wing	TF	E7	E2
On def. 6-0	22/39	8/19	9/12	2/3	12	1	1
On def. 5-1	2/3	0/1	1/1	0/0	3	0	0
Fastbreak	2/5				0	0	0

Defense by type

	Total	9m	6m	Wing	Stl.	C7	2m
Def. 6-0	11/19	2/4	1/1	2/3	3	3	0
Def. 5-1	11/18	0/2	1/2	4/5	3	0	0
Def. press.	1/2	0/0	1/1	0/0	0	0	0
Fastbreak	3/6				0	0	3

Attack with superiority / minority / goalkeeper out

	Attack				Reaction		
	Att.	Eff.	Shots	TF	FB	LD	Tot.
7 on 6 (GK out)	1	0%	0/1	0	0/0	0/0	0/0
6 on 6 (GK out)	8	50%	4/6	2	0/0	0/0	0/0
6 on 6	50	44%	22/38	12			
5 on 6	1	0%	0/0	1			
6 on 5	1	0%	0/1	0			

Player superiority / GK out counted at the end of attack (in case it changes during attack)

Defense with superiority / minority / goalkeeper out

	Attack				Reaction		
	Att.	Eff.	Shots	TF	FB	LD	Tot.
6 on 6	52	50%	26/37	15			
6 on 5	8	25%	2/4	4			
5 on 6	1	100%	1/1	0			

Numbers show attacking numbers of opponent. Lower efficiency of opponent means better defense of this team

Jersey number Tot. Total shooting 6m 6m (line) shooting 9m 9m shooting Wng Wing shooting FB Fastbreak sh. 7m 7m penalty sh.
 Brk. Breakthrough sh. LD Long distance sh. As. Assists PC Pass clear chance E7 Earned 7m pen. TF Technical faults St. Steals
 2m 2m punishments C7. Committed 7m E2 Earned 2m pun. YC. Yellow cards R/B Red/Blue cards Blk. Blocks S Starting Line-up

Handball statistics and livescore by Toma-soft ltd (www.toma-soft.hr)



25th IHF Women's Junior World Championship 2026



Preliminary Round - Group D, 3. round

Match Team Statistics

Match No. 39

Argentina 29 - 26 Türkiye

(11 - 12) (18 - 14)

27.6.2026. 11:45

Attendance: 500

Zhongdu Campus

Gymnasium

Referees: Yufeng Cheng (CHN) / Yunlei Zhou (CHN)

Shot distribution by player

3 S. Bozova

		1/1

5 I. Yüksel

		0/1
3/3		1/1

1 miss.

7 K. Çınar

1/1		
1/2	1/1	

1/1 lob

11 S. Dağlı

0/1		

13 E. Hüzmele

1/1		
-----	--	--

14 B. Sönmez

1/1	1/1	2/4
0/2		1/1
1/1		

1 post 2 miss.

23 B. Seven

		1/1
2/2		0/1

1 post

24 N. Kaya

--	--	--

28 S. Durdu

1/1		
0/1		

32 S. Öz

--	--	--

38 A. Öztürk

	0/1	
1/1		1/1

1 miss.

41 G. Dikme

--	--	--

63 H. Karagözü

1/1		
0/1		
1/1		

71 H. Muhcu

0/1		0/2
		2/2
		0/2

TOTAL

5/6	1/1	3/7
0/5	0/1	3/4
9/10	1/1	3/6

2 post 4 miss. 1/1 lob

Saves distribution goalkeepers

43 I. Lahaçlar

0/1		
0/1		0/1

45 B. Yılmaz

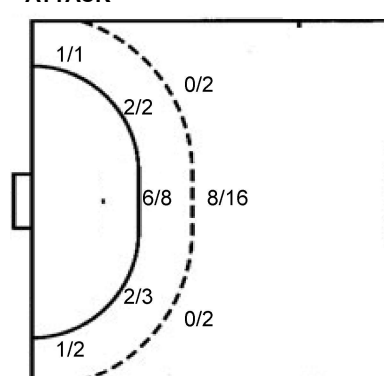
0/2		0/1
3/6		0/2
1/6	1/5	1/5

TOTAL

0/2		0/1
3/7		0/2
1/7	1/5	1/6

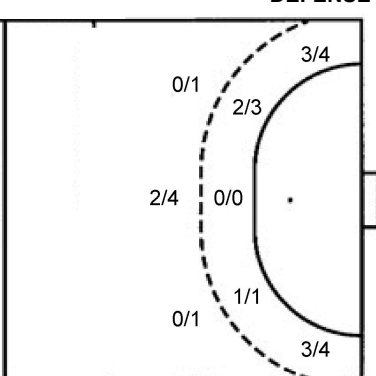
Shots by position

ATTACK



7m penalties 0/1
Fastbreak 2/5
Breakthrough 4/6
Long dist. 0/0

DEFENSE



7m penalties 3/3
Fastbreak 3/6
Breakthrough 12/21
Long dist. 0/0

Shooting statistics

Position	Goals	Sav.	Miss.	Post	Blk.	Total	%
Back (9m)	8	8	2	2	0	20	40
Line (6m)	10	3	0	0	0	13	77
Wing	2	1	0	0	0	3	67
7m penalties	0	1	0	0	0	1	0
Fastbreak	2	2	1	0	0	5	40
Breakthrough	4	1	1	0	0	6	67
Total	26	16	4	2	0	48	54

Jersey number Tot. Total shooting 6m 6m (line) shooting 9m 9m shooting Wng Wing shooting FB Fastbreak sh. 7m 7m penalty sh.
Brk. Breakthrough sh. LD Long distance sh. As. Assists PC Pass clear chance E7 Earned 7m pen. TF Technical faults St. Steals
2m 2m punishments C7. Committed 7m E2 Earned 2m pun. YC. Yellow cards R/B Red/Blue cards Blk. Blocks S Starting Line-up

Handball statistics and livescore by Toma-soft ltd (www.toma-soft.hr)

