



25th IHF Women's Junior World Championship 2026



Preliminary Round - Group C, 3. round

Match Team Statistics

Match No. 38

Germany 37 - 31 Romania

(20 - 16) (17 - 15)

27.6.2026. 18:30

Attendance: 700

Zhongdu Campus

Gymnasium

Referees: Mads Fremstad (NOR) / Jorgen Jorstad (NOR)

Shot distribution by player

3 J. Walther

		1/1
1/1		0/1

4 L. Egeling

	0/1	
1/1		

1 miss.

5 F. Njinkeu

	1/1	

6 A. Mittag

	0/1	
0/1		

3 miss.

7 C. Rohr

2/2	0/1	2/2
1/1		1/1
2/2	1/1	2/2

1 miss.

8 R. Litvinov

1/1		1/1
		2/2

1 post 1 miss.

11 L. Lammich

1/1		
	0/1	

1 miss.

13 A. Bornhardt

		1/1
0/2		
1/2	1/1	1/1

1/1 lob

14 M. Kern

1/1		
1/2		
0/1		

17 E. Niemann

	1/1	1/1

18 L. Klocke

1/1		1/1
1/1	0/1	0/1

20 M. Tucholke

1/1		0/1
	1/1	
1/1		

1 post 2 miss.

21 K. Ott

1/1		1/1

1 post

28 K. Goldammer

TOTAL

6/6	0/2	6/7
6/9	2/4	4/6
5/8	3/4	4/4

3 post 9 miss. 1/1 lob

Saves distribution goalkeepers

12 M. Muth

16 L. Lindemann

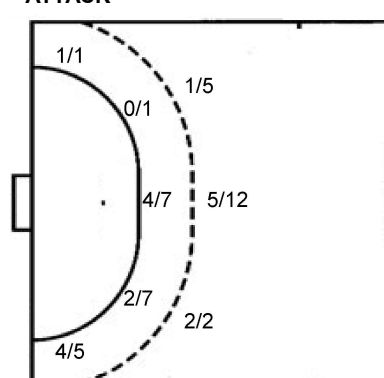
0/5	0/3	0/4
0/1		2/5
1/7	2/4	3/9

TOTAL

0/5	0/3	0/4
0/1		2/5
1/7	2/4	3/9

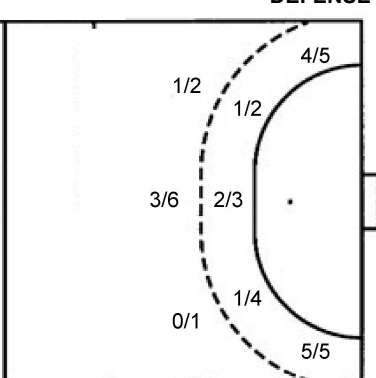
Shots by position

ATTACK



7m penalties	8/9
Fastbreak	4/6
Breakthrough	4/6
Long dist.	2/2

DEFENSE



7m penalties	4/4
Fastbreak	3/4
Breakthrough	7/8
Long dist.	0/2

Shooting statistics

Position	Goals	Sav.	Miss.	Post	Blk.	Total	%
Back (9m)	8	5	5	1	0	19	42
Line (6m)	6	6	1	2	0	15	40
Wing	5	1	0	0	0	6	83
7m penalties	8	0	1	0	0	9	89
Fastbreak	4	1	1	0	0	6	67
Breakthrough	4	1	1	0	0	6	67
Total	35	14	9	3	0	61	57

Jersey number Tot. Total shooting 6m 6m (line) shooting 9m 9m shooting Wng Wing shooting FB Fastbreak sh. 7m 7m penalty sh.
 Brk. Breakthrough sh. LD Long distance sh. As. Assists PC Pass clear chance E7 Earned 7m pen. TF Technical faults St. Steals
 2m 2m punishments C7. Committed 7m E2 Earned 2m pun. YC. Yellow cards R/B Red/Blue cards Blk. Blocks S Starting Line-up

Handball statistics and livescore by Toma-soft ltd (www.toma-soft.hr)



25th IHF Women's Junior World Championship 2026



Preliminary Round - Group C, 3. round

Match Team Statistics

Match No. 38

Germany 37 - 31 Romania

(20 - 16) (17 - 15)

27.6.2026. 18:30

Attendance: 700

Zhongdu Campus

Gymnasium

Referees: Mads Fremstad (NOR) / Jorgen Jorstad (NOR)

Shot distribution by player

2 A. Nită 1/1 1/1 1/1 1/1 1/1 lob	4 E. Marton 1/1 1/1 0/1 1/1 1 miss.	5 M. Voicu 1 post	6 D. Mihăilă 0/1 1/1	7 M. Ciubotaru	8 T. Damian 2/2 2/2 2/2 3/3 3/4	10 G. Tulea 1/1 1/1
11 A. Stan 0/1 1 post 1 miss.	17 A. Serban 0/1 0/1	18 B. Vintilă	20 D. Utan 1/1 1/2	22 S. Truscă 1/1 2/2	37 I. Hrenaru 1 miss. 1/1 0/1	84 E. Bodijar 1/1 1/1 1/1 1 block

TOTAL

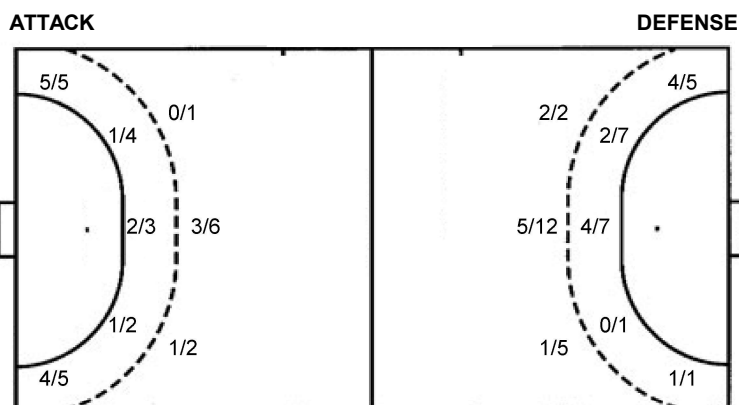
5/5	3/3	4/4
1/1		3/5
6/7	2/4	6/9

2 post 3 miss. 1 block 1/1 lob

Saves distribution goalkeepers

12 I. Nită	16 F. Rosu	TOTAL
0/1	0/6 2/2 1/6	0/6 2/2 1/7
0/1	3/8 2/2 2/5	3/9 2/2 2/6
0/3	3/5 1/3 0/1	3/8 1/3 0/4

Shots by position



7m penalties	4/4
Fastbreak	3/4
Breakthrough	7/8
Long dist.	0/2

7m penalties	8/9
Fastbreak	4/6
Breakthrough	4/6
Long dist.	2/2

Shooting statistics

Position	Goals	Sav.	Miss.	Post	Blk.	Total	%
Back (9m)	4	3	1	0	1	9	44
Line (6m)	4	3	0	2	0	9	44
Wing	9	1	0	0	0	10	90
7m penalties	4	0	0	0	0	4	100
Fastbreak	3	0	1	0	0	4	75
Breakthrough	7	1	0	0	0	8	88
Total	31	8	2	2	1	44	70

Jersey number Tot. Total shooting 6m 6m (line) shooting 9m 9m shooting Wng Wing shooting FB Fastbreak sh. 7m 7m penalty sh.
 Brk. Breakthrough sh. LD Long distance sh. As. Assists PC Pass clear chance E7 Earned 7m pen. TF Technical faults St. Steals
 2m 2m punishments C7. Committed 7m E2 Earned 2m pun. YC. Yellow cards R/B Red/Blue cards Blk. Blocks S Starting Line-up

