



25th IHF Women's Junior World Championship 2026



Preliminary Round - Group D, 2. round

Match Team Statistics
Match No. 32

Korea 26 - 24 Argentina
(11 - 13) (15 - 11)

25.6.2026. 14:00
Attendance: 350
Zhongdu Campus
Gymnasium

Referees: Ruben Maia (POR) / Andre Nunes (POR)

Korea

| Players | | Goals / shots | | | | | | | | | Attack | | | | | Def. | | | Penalties | | | | TP | | |
|---------|------------------|---------------|-------|-----|-----|-----|------|-----|-----|------|--------|-----|----|----|----|------|-----|----|-----------|----|----|---|----|---|-------|
| # | Surname and name | S | Tot. | % | 9m | 6m | Wing | 7m | FB | Brk. | LD | As. | PC | E7 | E2 | TF | St. | C7 | Blk | YC | 2m | R | | B | |
| 2 | SHIN Yeeun | S | 2/3 | 67 | | | 2/3 | | | | | | | | | | | | | | | | | | 19:52 |
| 9 | KIM Jimin | S | 1/4 | 25 | | | 1/4 | | | | | | | 1 | | | | 2 | | | | | | | 58:40 |
| 10 | PARK Heewon | | | | | | | | | | | | | | | | | | | | | | | | |
| 13 | LEE Ahyun | S | 1/5 | 20 | 0/1 | | | 0/1 | | 1/3 | | 6 | 1 | 3 | | 3 | 1 | 1 | | | | | | | 60:00 |
| 16 | KIM Dain | | 0/1 | 0 | | | | | | | 0/1 | 1 | | | | | | | | | | | | | 36:49 |
| 17 | SUH Ayoung | S | 10/18 | 56 | 1/6 | 2/2 | | 4/5 | 1/1 | 2/4 | | 2 | 1 | 2 | 1 | 9 | 2 | 1 | 1 | | 1 | | | | 60:00 |
| 19 | JANG Eunseong | | 3/3 | 100 | | 3/3 | | | | | | 1 | | 2 | 1 | | | 2 | | | | | | | 44:17 |
| 20 | LEE Yeseo | | 5/5 | 100 | | | 3/3 | | 2/2 | | | | | | | 3 | | 1 | | | | | | | 38:27 |
| 21 | KIM Bohyun | | | | | | | | | | | | | | | | | | | | | | | | |
| 22 | HONG Yeji | | | | | | | | | | | | | | | | | | | | | | | | 0:30 |
| 23 | KIM Bokyeong | | | | | | | | | | | 1 | 1 | | | | | | | | | | | | 17:26 |
| 29 | KU Hyeonji | S | 2/3 | 67 | 0/1 | | | 1/1 | | 1/1 | | | 1 | 1 | 1 | 2 | | | 1 | | 1 | | | | 47:56 |
| 30 | PARK Chanhee | | | | | | | | | | | | | | | | | | | | | | | | |
| 31 | CHOI Hyosung | S | 2/3 | 67 | | | | 1/2 | 1/1 | | | | | | | 1 | | 1 | | | | 2 | | | 16:18 |
| 33 | YOON Byul | | | | | | | | | | | | | | | | | | | | | | | | 0:01 |
| 77 | GO Chaeun | S | | | | | | | | | | | | | | 1 | | | | | | | | | 19:44 |
| | Team / bench | | | | | | | | | | | | | | | | | | | | 1 | | | | |
| | TOTAL | | 26/45 | 58 | 1/8 | 5/5 | 6/10 | 6/9 | 4/4 | 4/8 | 0/1 | 11 | 4 | 9 | 3 | 19 | 3 | 8 | 2 | 1 | 4 | 0 | 0 | | |

| Goalkeepers | | Saves / shots | | | | | | | | |
|-------------|------------------|---------------|----|-----|-----|------|-----|-----|------|-----|
| # | Surname and name | Tot. | % | 9m | 6m | Wing | 7m | FB | Brk. | LD |
| 16 | KIM Dain | 8/21 | 38 | 1/2 | 0/3 | 1/3 | 1/4 | 1/2 | 4/7 | |
| 22 | HONG Yeji | 0/1 | 0 | | | | 0/1 | | | |
| 77 | GO Chaeun | 5/15 | 33 | | 3/6 | 0/2 | 1/1 | 0/2 | 1/4 | |
| | TOTAL | 13/37 | 35 | 1/2 | 3/9 | 1/5 | 2/6 | 1/4 | 5/11 | 0/0 |

Coach: **Kyoongjin Kim**

Number of attacks: 61, Efficiency: 43%, Average Duration: 27.21 seconds

Attack by type of defense

| | Shots | 9m | 6m | Wing | TF | E7 | E2 |
|----------------|-------|-----|-----|------|----|----|----|
| On def. 6-0 | 16/31 | 1/8 | 5/5 | 6/10 | 19 | 8 | 3 |
| On def. press. | 0/0 | 0/0 | 0/0 | 0/0 | 0 | 1 | 0 |
| Fastbreak | 4/4 | | | | 0 | 0 | 0 |

Defense by type

| | Total | 9m | 6m | Wing | Stl. | C7 | 2m |
|-------------|-------|-----|-----|------|------|----|----|
| Def. 6-0 | 12/23 | 1/3 | 4/6 | 2/4 | 2 | 6 | 0 |
| Def. 3-3 | 5/11 | 0/0 | 2/3 | 2/4 | 0 | 2 | 0 |
| Def. press. | 0/2 | 0/0 | 0/1 | 0/1 | 1 | 0 | 0 |
| Fastbreak | 3/4 | | | | 0 | 0 | 4 |

Attack with superiority / minority / goalkeeper out

| | Attack | | | | Reaction | | |
|-----------------|--------|------|-------|----|----------|-----|------|
| | Att. | Eff. | Shots | TF | FB | LD | Tot. |
| 7 on 6 (GK out) | 2 | 50% | 1/2 | 0 | 0/0 | 0/0 | 0/0 |
| 6 on 6 (GK out) | 5 | 0% | 0/4 | 1 | 2/2 | 0/1 | 2/3 |
| 6 on 6 | 44 | 39% | 17/27 | 17 | | | |
| 6 on 5 | 7 | 86% | 6/6 | 1 | | | |
| 5 on 6 | 3 | 67% | 2/3 | 0 | | | |

Player superiority / GK out counted at the end of attack (in case it changes during attack)

Defense with superiority / minority / goalkeeper out

| | Attack | | | | Reaction | | |
|-----------------|--------|------|-------|----|----------|-----|------|
| | Att. | Eff. | Shots | TF | FB | LD | Tot. |
| 7 on 6 (GK out) | 5 | 40% | 2/4 | 1 | 0/0 | 0/0 | 0/0 |
| 6 on 6 (GK out) | 4 | 50% | 2/3 | 1 | 0/0 | 0/0 | 0/0 |
| 6 on 6 | 40 | 35% | 14/30 | 10 | | | |
| 6 on 5 | 10 | 60% | 6/8 | 2 | | | |

Numbers show attacking numbers of opponent. Lower efficiency of opponent means better defense of this team

Jersey number Tot. Total shooting 6m 6m (line) shooting 9m 9m shooting Wng Wing shooting FB Fastbreak sh. 7m 7m penalty sh.
Brk. Breakthrough sh. LD Long distance sh. As. Assists PC Pass clear chance E7 Earned 7m pen. TF Technical faults St. Steals
2m 2m punishments C7. Committed 7m E2 Earned 2m pun. YC. Yellow cards R/B Red/Blue cards Blk. Blocks S Starting Line-up



25th IHF Women's Junior World Championship 2026



Preliminary Round - Group D, 2. round

Match Team Statistics

Match No. 32

Korea 26 - 24 Argentina

(11 - 13) (15 - 11)

25.6.2026. 14:00

Attendance: 350

Zhongdu Campus

Gymnasium

Referees: Ruben Maia (POR) / Andre Nunes (POR)

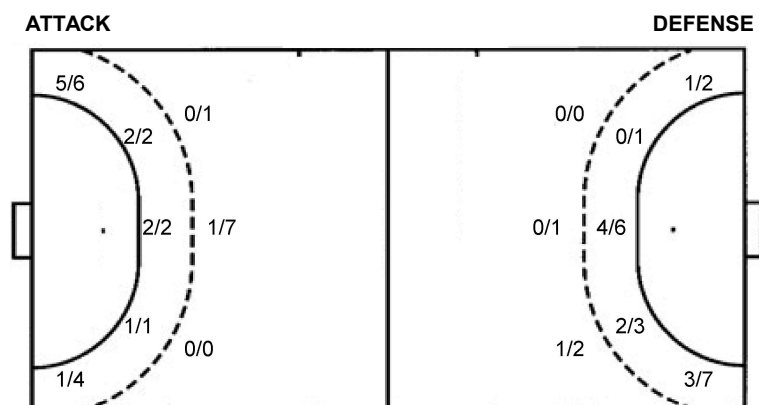
Shot distribution by player

| | | | | | | | |
|------------------------------------|-----------------------------------|----------------------------|----------------------------|------------------------------------|-------------------|-----------------------------|--|
| 2 Y. Shin 1 post 1/1 lob | 9 J. Kim 1 post 1/1 lob | 10 H. Park | 13 A. Lee 1 post | 17 A. Suh 1 post 2 block | 19 E. Jang | 20 Y. Lee 1/1 lob | TOTAL 4 post 1 miss. 2 block 3/3 lob |
| 1/1 | 0/1 0/1 | | 0/1 0/1 0/1 1/1 | 1/2 2/2 3/5 1/2 2/2 | 1/1 1/1 | 3/3 1/1 | 3/3 2/2 2/3 2/5 0/1 3/4 5/9 1/2 5/5 |
| 21 B. Kim | 23 B. Kim | 29 H. Ku 1 miss. | 30 C. Park | 31 H. Choi 2/3 | 33 B. Yoon | | |
| | | 2/2 | | | | | |

Saves distribution goalkeepers

| | | | |
|-----------------------------------|-------------------|-------------------------------|---------------------------------------|
| 16 D. Kim | 22 Y. Hong | 77 C. Go | TOTAL |
| 2/4 0/1 0/1 2/2 1/1 1/5 2/7 | 0/1 | 0/1 1/1 1/1 2/4 1/2 0/6 | 2/5 1/2 0/1 3/4 1/1 3/9 3/9 0/6 |

Shots by position



| | |
|--------------|-----|
| 7m penalties | 6/9 |
| Fastbreak | 4/4 |
| Breakthrough | 4/8 |
| Long dist. | 0/1 |

| | |
|--------------|------|
| 7m penalties | 4/8 |
| Fastbreak | 3/4 |
| Breakthrough | 6/14 |
| Long dist. | 0/2 |

Shooting statistics

| Position | Goals | Sav. | Miss. | Post | Blk. | Total | % |
|--------------|-----------|-----------|----------|----------|----------|-----------|-----------|
| Back (9m) | 1 | 3 | 1 | 1 | 2 | 8 | 13 |
| Line (6m) | 5 | 0 | 0 | 0 | 0 | 5 | 100 |
| Wing | 6 | 2 | 0 | 2 | 0 | 10 | 60 |
| 7m penalties | 6 | 3 | 0 | 0 | 0 | 9 | 67 |
| Fastbreak | 4 | 0 | 0 | 0 | 0 | 4 | 100 |
| Breakthrough | 4 | 3 | 0 | 1 | 0 | 8 | 50 |
| Total | 26 | 11 | 1 | 4 | 2 | 44 | 59 |

Jersey number Tot. Total shooting 6m 6m (line) shooting 9m 9m shooting Wng Wing shooting FB Fastbreak sh. 7m 7m penalty sh.
 Brk. Breakthrough sh. LD Long distance sh. As. Assists PC Pass clear chance E7 Earned 7m pen. TF Technical faults St. Steals
 2m 2m punishments C7. Committed 7m E2 Earned 2m pun. YC. Yellow cards R/B Red/Blue cards Blk. Blocks S Starting Line-up



25th IHF Women's Junior World Championship 2026



Preliminary Round - Group D, 2. round

Match Team Statistics
Match No. 32

Korea 26 - 24 Argentina
(11 - 13) (15 - 11)

25.6.2026. 14:00
Attendance: 350
Zhongdu Campus
Gymnasium

Referees: Ruben Maia (POR) / Andre Nunes (POR)

Argentina

| # | Surname and name | S | Goals / shots | | | | | | | | | Attack | | | | | Def. | | | Penalties | | | TP | | | | | | | | | |
|----|--------------------------------|---|---------------|-----|-----|------|------|-----|-----|------|-----|--------|----|----|----|----|------|----|-----|-----------|----|---|----|---|---|---|---|--|--|--|-------|------|
| | | | Tot. | % | 9m | 6m | Wing | 7m | FB | Brk. | LD | As. | PC | E7 | E2 | TF | St. | C7 | Blk | YC | 2m | R | | B | | | | | | | | |
| 2 | PEIXOTO ALVES Kira | S | 4/7 | 57 | | 4/7 | | | | | | | | | 1 | | | | | | 2 | | 1 | | | | | | | | 38:22 | |
| 4 | GENOUD Luou Martina | | 6/10 | 60 | | 1/1 | 3/7 | | 2/2 | | | | | | | | | | | | 2 | | | | | | | | | | 55:53 | |
| 5 | LOPEZ Mara Susana | | | | | | | | | | | | | | | | | | | | 1 | 2 | | | 1 | | | | | | 25:52 | |
| 9 | MAITINI BELHITS Selena | | | | | | | | | | | | | | 1 | | | | | | | 1 | | | 1 | | | | | | 7:04 | |
| 10 | MENDOZA Micaela Natali | | 0/1 | 0 | | | | | | 0/1 | | | | | 1 | | | | | | | 1 | | | | | | | | | 27:25 | |
| 11 | SCHNEIDER Milagros | S | 0/1 | 0 | | | | | | | 0/1 | | | | | | | | | | 1 | | | | | | | | | | 6:35 | |
| 13 | VENTOS VIDAL Mara Delfina | | 3/4 | 75 | | | | 3/4 | | | | | | | | | | | | | | | | | | | | | | | 16:25 | |
| 14 | PATRONE Isabella Julia | S | 3/7 | 43 | 1/3 | | | | | 2/4 | | | | 4 | 4 | 4 | 2 | 2 | | | 2 | | | | | | | | | | 48:18 | |
| 17 | PRAT MORENO Delfina | S | | | | | | | | | | | | | | | | | | | | | | | | | 1 | | | | 4:29 | |
| 22 | LOSARCOS Catalina Alexa | | 1/2 | 50 | | 1/2 | | | | | | | | | 1 | | | | | | 1 | 1 | | | | | | | | | 44:38 | |
| 23 | FERRARO Josefina | | | | | | | | | | | | | | | | | | | | | | | | | | | | | | | 5:37 |
| 24 | MOLINA Helena Albertina | S | 4/11 | 36 | | 1/2 | | 1/4 | | 2/5 | | | | 3 | | 2 | 2 | 6 | | | 1 | 1 | | | | | | | | | 47:19 | |
| 40 | NUNEZ FRIDMANAS Lola Valentina | S | 0/1 | 0 | | | | | | | 0/1 | | | 3 | | | | 2 | | | | | | | | | | | | | 49:24 | |
| 49 | SOKALSKI Xiomara Mailén | S | 2/5 | 40 | | | | | 0/1 | 2/4 | | | | 1 | 2 | | | 2 | | | 1 | | | | | | | | | | 33:07 | |
| 66 | ARES Paulina | | | | | | | | | | | | | | | | | | | | | | | | | | | | | | 0:53 | |
| 99 | GASPARRI Delfina Belen | | 1/1 | 100 | | | | | 1/1 | | | | | | | | | | | | | | | | | | | | | | 8:39 | |
| | Team / bench | | | | | | | | | | | | | | | | | | | | | | | | | | | | | | | |
| | TOTAL | | 24/50 | 48 | 1/3 | 6/10 | 4/9 | 4/8 | 3/4 | 6/14 | 0/2 | | | 11 | 8 | 8 | 4 | 14 | | | 6 | 9 | 2 | 0 | 3 | 0 | 0 | | | | | |

| # | Surname and name | Saves / shots | | | | | | | | |
|----|--------------------------------|---------------|----|-----|-----|------|-----|-----|------|-----|
| | | Tot. | % | 9m | 6m | Wing | 7m | FB | Brk. | LD |
| 23 | FERRARO Josefina | 1/6 | 17 | 0/1 | | 0/1 | 1/3 | | 0/1 | |
| 40 | NUNEZ FRIDMANAS Lola Valentina | 10/31 | 32 | 3/3 | 0/5 | 2/7 | 2/6 | 0/4 | 3/6 | |
| | TOTAL | 11/37 | 30 | 3/4 | 0/5 | 2/8 | 3/9 | 1/4 | 3/7 | 0/0 |

Coach: **Martin Ricardo Duhau**

Number of attacks: 59, Efficiency: 41%, Average Duration: 32.88 seconds

Attack by type of defense

| | Shots | 9m | 6m | Wing | TF | E7 | E2 |
|----------------|-------|-----|-----|------|----|----|----|
| On def. 6-0 | 12/23 | 1/3 | 4/6 | 2/4 | 12 | 6 | 4 |
| On def. 3-3 | 5/11 | 0/0 | 2/3 | 2/4 | 0 | 2 | 0 |
| On def. press. | 0/2 | 0/0 | 0/1 | 0/1 | 2 | 0 | 0 |
| Fastbreak | 3/4 | | | | 0 | 0 | 0 |

Defense by type

| | Total | 9m | 6m | Wing | Stl. | C7 | 2m |
|-------------|-------|-----|-----|------|------|----|----|
| Def. 6-0 | 16/31 | 1/8 | 5/5 | 6/10 | 6 | 8 | 0 |
| Def. press. | 0/0 | 0/0 | 0/0 | 0/0 | 0 | 1 | 0 |
| Fastbreak | 4/4 | | | | 0 | 0 | 3 |

Attack with superiority / minority / goalkeeper out

| | Attack | | | | Reaction | | |
|-----------------|--------|------|-------|----|----------|-----|------|
| | Att. | Eff. | Shots | TF | FB | LD | Tot. |
| 7 on 6 (GK out) | 5 | 40% | 2/4 | 1 | 0/0 | 0/0 | 0/0 |
| 6 on 6 (GK out) | 4 | 50% | 2/3 | 1 | 0/0 | 0/0 | 0/0 |
| 6 on 6 | 40 | 35% | 14/30 | 10 | | | |
| 6 on 5 | 10 | 60% | 6/8 | 2 | | | |

Player superiority / GK out counted at the end of attack (in case it changes during attack)

Defense with superiority / minority / goalkeeper out

| | Attack | | | | Reaction | | |
|-----------------|--------|------|-------|----|----------|-----|------|
| | Att. | Eff. | Shots | TF | FB | LD | Tot. |
| 7 on 6 (GK out) | 2 | 50% | 1/2 | 0 | 0/0 | 0/0 | 0/0 |
| 6 on 6 (GK out) | 5 | 0% | 0/4 | 1 | 2/2 | 0/1 | 2/3 |
| 6 on 6 | 44 | 39% | 17/27 | 17 | | | |
| 6 on 5 | 7 | 86% | 6/6 | 1 | | | |
| 5 on 6 | 3 | 67% | 2/3 | 0 | | | |

Numbers show attacking numbers of opponent. Lower efficiency of opponent means better defense of this team

Jersey number Tot. Total shooting 6m 6m (line) shooting 9m 9m shooting Wng Wing shooting FB Fastbreak sh. 7m 7m penalty sh.
Brk. Breakthrough sh. LD Long distance sh. As. Assists PC Pass clear chance E7 Earned 7m pen. TF Technical faults St. Steals
2m 2m punishments C7. Committed 7m E2 Earned 2m pun. YC. Yellow cards R/B Red/Blue cards Blk. Blocks S Starting Line-up



25th IHF Women's Junior World Championship 2026



Preliminary Round - Group D, 2. round

Match Team Statistics

Match No. 32

Korea 26 - 24 Argentina

(11 - 13) (15 - 11)

25.6.2026. 14:00

Attendance: 350

Zhongdu Campus

Gymnasium

Referees: Ruben Maia (POR) / Andre Nunes (POR)

Shot distribution by player

2 K. Peixoto Alves

| | | |
|--|-----|-----|
| | 0/1 | |
| | | |
| | 2/3 | 2/2 |

1 miss.

4 L. Genoud

| | | |
|-----|-----|-----|
| 2/2 | | |
| | | |
| 2/2 | 0/1 | 2/2 |

2 post 1 miss.

5 M. Lopez

| | | |
|--|--|--|
| | | |
| | | |
| | | |

9 S. Maitini Belhits

| | | |
|--|--|--|
| | | |
| | | |
| | | |

10 M. Mendoza

| | | |
|-----|--|--|
| | | |
| | | |
| 0/1 | | |

11 M. Schneider

| | | |
|--|--|--|
| | | |
| | | |
| | | |

1 block

13 M. Ventos Vidal

| | | |
|-----|-----|--|
| 1/1 | | |
| 1/1 | | |
| 0/1 | 1/1 | |

14 I. Patrone

| | | |
|-----|-----|-----|
| 0/1 | 1/1 | 1/1 |
| | | 0/1 |
| 1/2 | | |

1 block

17 D. Prat Moreno

| | | |
|--|--|--|
| | | |
| | | |
| | | |

22 C. Losarcos

| | | |
|-----|--|--|
| | | |
| | | |
| 1/1 | | |

1 post

24 H. Molina

| | | |
|-----|-----|-----|
| | | |
| 0/2 | | |
| 2/2 | 1/2 | 1/1 |

4 post

49 X. Sokalski

| | | |
|-----|-----|-----|
| 0/1 | | |
| 0/1 | | |
| | 1/1 | 1/1 |

1 miss.

66 P. Ares

| | | |
|--|--|--|
| | | |
| | | |
| | | |

99 D. Gasparri

| | | |
|--|-----|--|
| | | |
| | | |
| | 1/1 | |

TOTAL

| | | |
|-----|-----|-----|
| 3/5 | 1/2 | 1/1 |
| 1/4 | | 0/1 |
| 6/9 | 6/9 | 6/6 |

7 post 3 miss. 2 block

Saves distribution goalkeepers

23 J. Ferraro

| | | |
|-----|--|-----|
| 0/1 | | |
| | | |
| 1/3 | | 0/2 |

40 L. Nunez Fridmanas

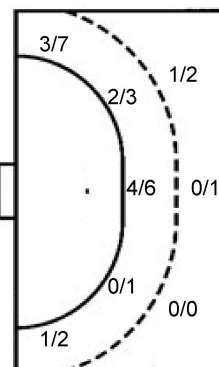
| | | |
|-----|-----|-----|
| 0/2 | 0/2 | 1/3 |
| 3/5 | 1/1 | 1/4 |
| 3/6 | 1/2 | 0/3 |

TOTAL

| | | |
|-----|-----|-----|
| 0/3 | 0/2 | 1/3 |
| 3/5 | 1/1 | 1/4 |
| 4/9 | 1/2 | 0/5 |

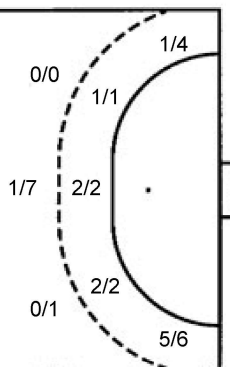
Shots by position

ATTACK



7m penalties 4/8
Fastbreak 3/4
Breakthrough 6/14
Long dist. 0/2

DEFENSE



7m penalties 6/9
Fastbreak 4/4
Breakthrough 4/8
Long dist. 0/1

Shooting statistics

| Position | Goals | Sav. | Miss. | Post | Blk. | Total | % |
|--------------|-----------|-----------|----------|----------|----------|-----------|-----------|
| Back (9m) | 1 | 1 | 0 | 0 | 1 | 3 | 33 |
| Line (6m) | 6 | 3 | 1 | 0 | 0 | 10 | 60 |
| Wing | 4 | 1 | 1 | 3 | 0 | 9 | 44 |
| 7m penalties | 4 | 2 | 0 | 2 | 0 | 8 | 50 |
| Fastbreak | 3 | 1 | 0 | 0 | 0 | 4 | 75 |
| Breakthrough | 6 | 5 | 1 | 2 | 0 | 14 | 43 |
| Total | 24 | 13 | 3 | 7 | 1 | 48 | 50 |

Jersey number Tot. Total shooting 6m 6m (line) shooting 9m 9m shooting Wng Wing shooting FB Fastbreak sh. 7m 7m penalty sh.
Brk. Breakthrough sh. LD Long distance sh. As. Assists PC Pass clear chance E7 Earned 7m pen. TF Technical faults St. Steals
2m 2m punishments C7. Committed 7m E2 Earned 2m pun. YC. Yellow cards R/B Red/Blue cards Blk. Blocks S Starting Line-up

Handball statistics and livescore by Toma-soft ltd (www.toma-soft.hr)

